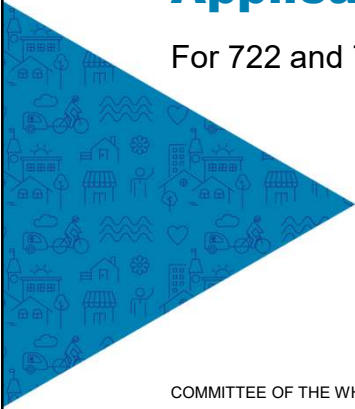


2022

CITY OF VICTORIA | Sustainable Planning & Community Development

Rezoning Application No. 00820 and Development Permit with Variances Application No. 00207

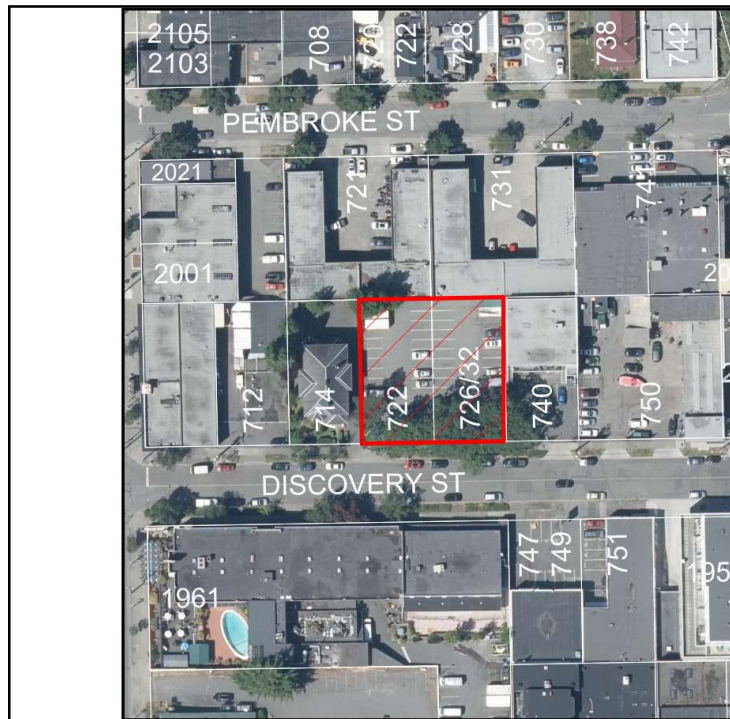
For 722 and 726 Discovery Street



COMMITTEE OF THE WHOLE | OCTOBER 6, 2022



1



Aerial Photo



2



Subject Properties



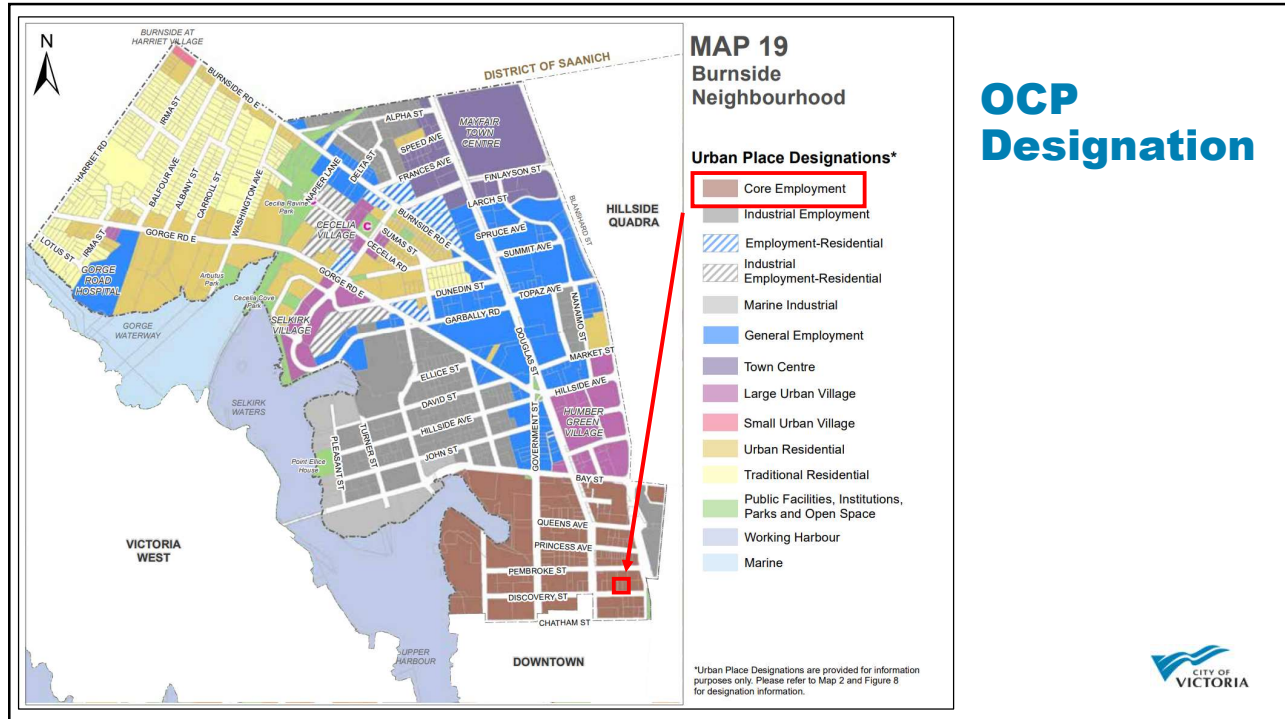
3



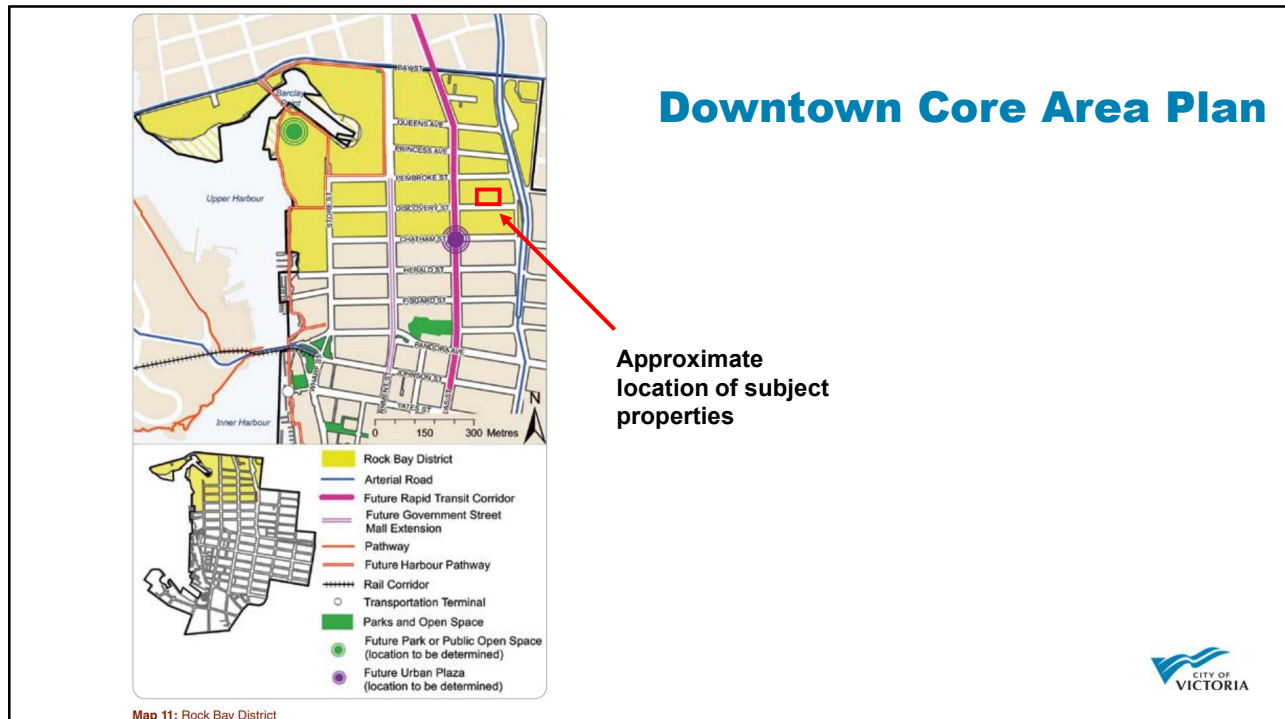
Neighbouring Properties



4



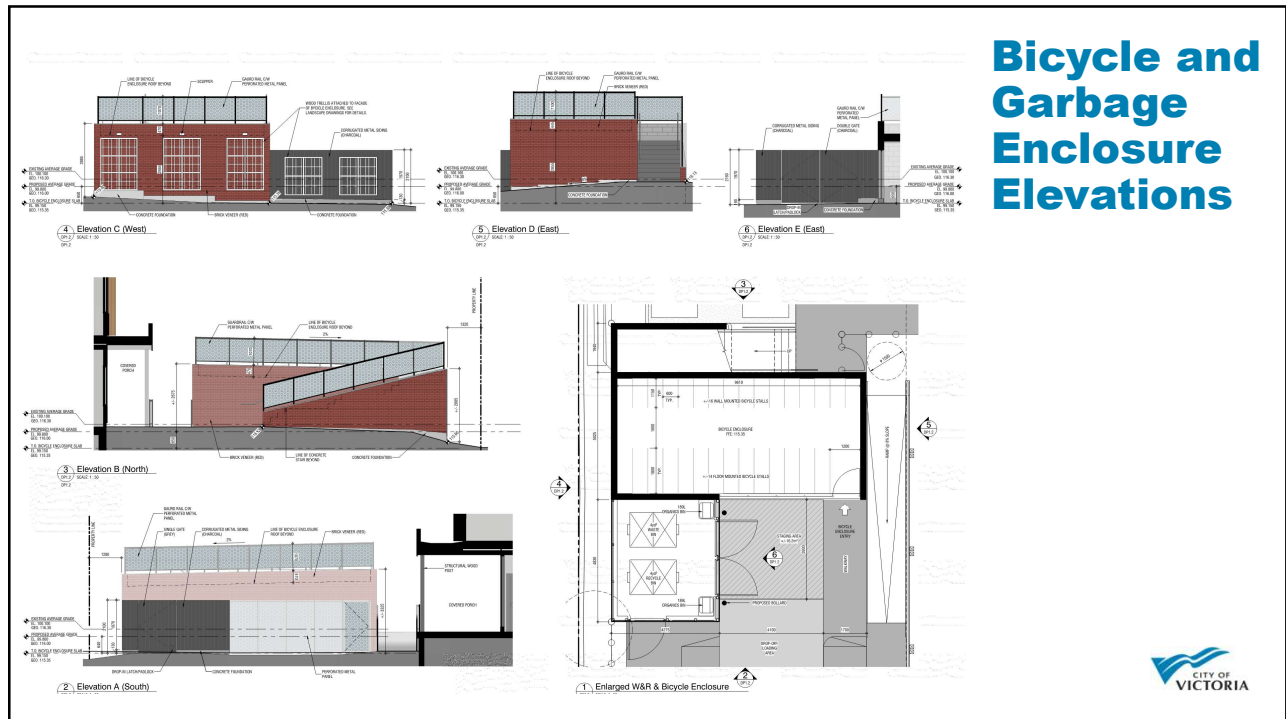
5



6



11



12

Renderings



AERIAL VIEW LOOKING NORTH-WEST



AERIAL VIEW LOOKING SOUTH-WEST



17

Renderings



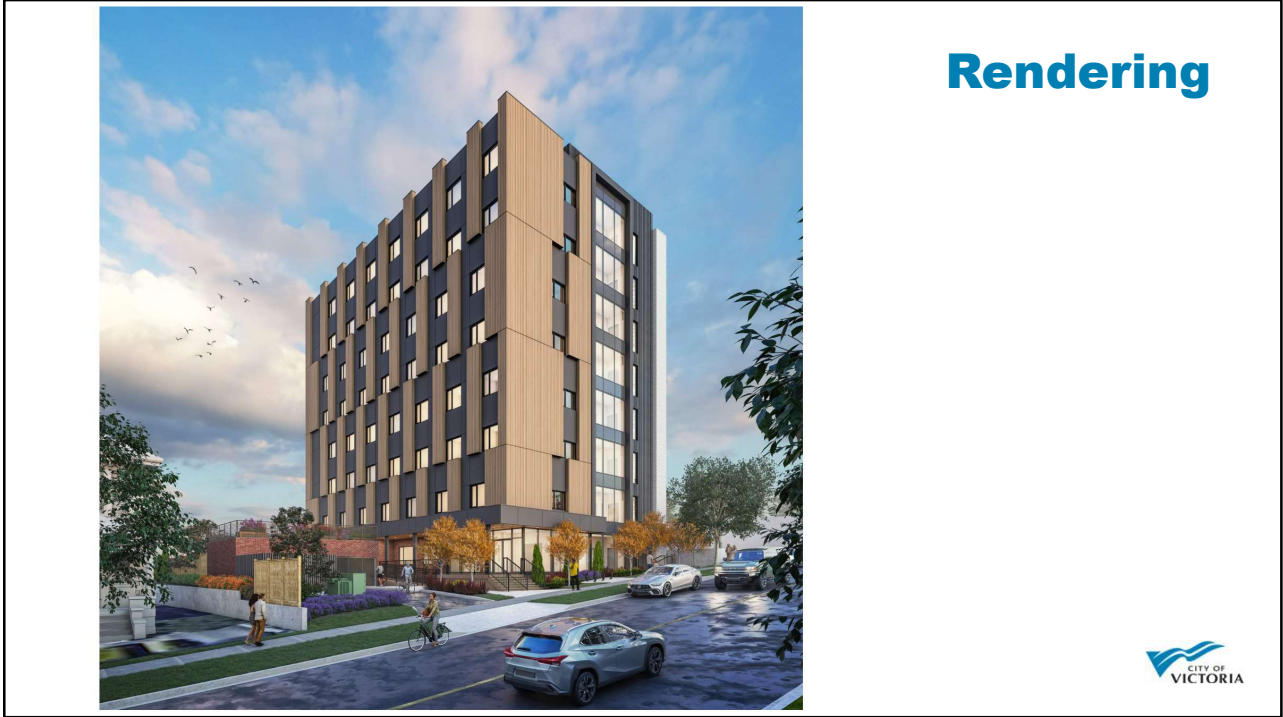
AERIAL VIEW LOOKING NORTH-EAST



AERIAL VIEW LOOKING SOUTH-EAST



18



Rendering