


2022 | CITY OF VICTORIA | Sustainable Planning & Community Development

Rezoning Application No. 00815 and Development Permit with Variances Application No. 00205

For 710 Caledonia Avenue and 1961 Douglas Street

COMMITTEE OF THE WHOLE | OCTOBER 6, 2022

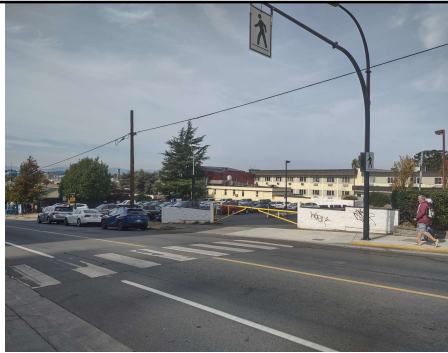


1

Aerial Photo



2



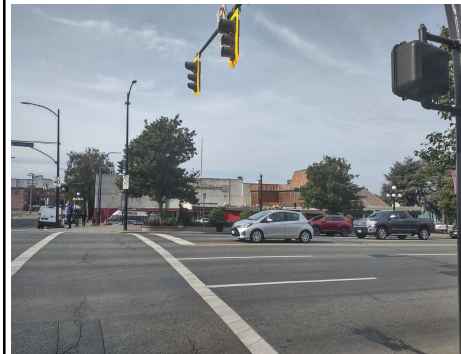
Subject Properties



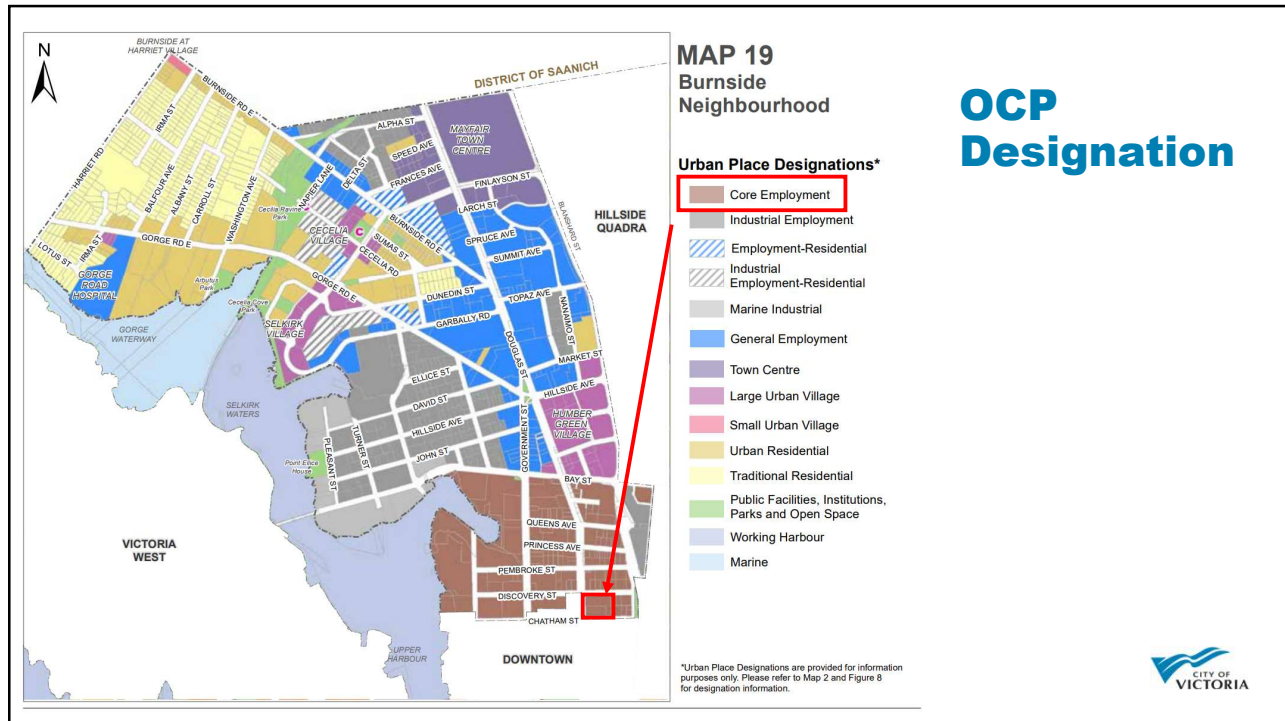
3



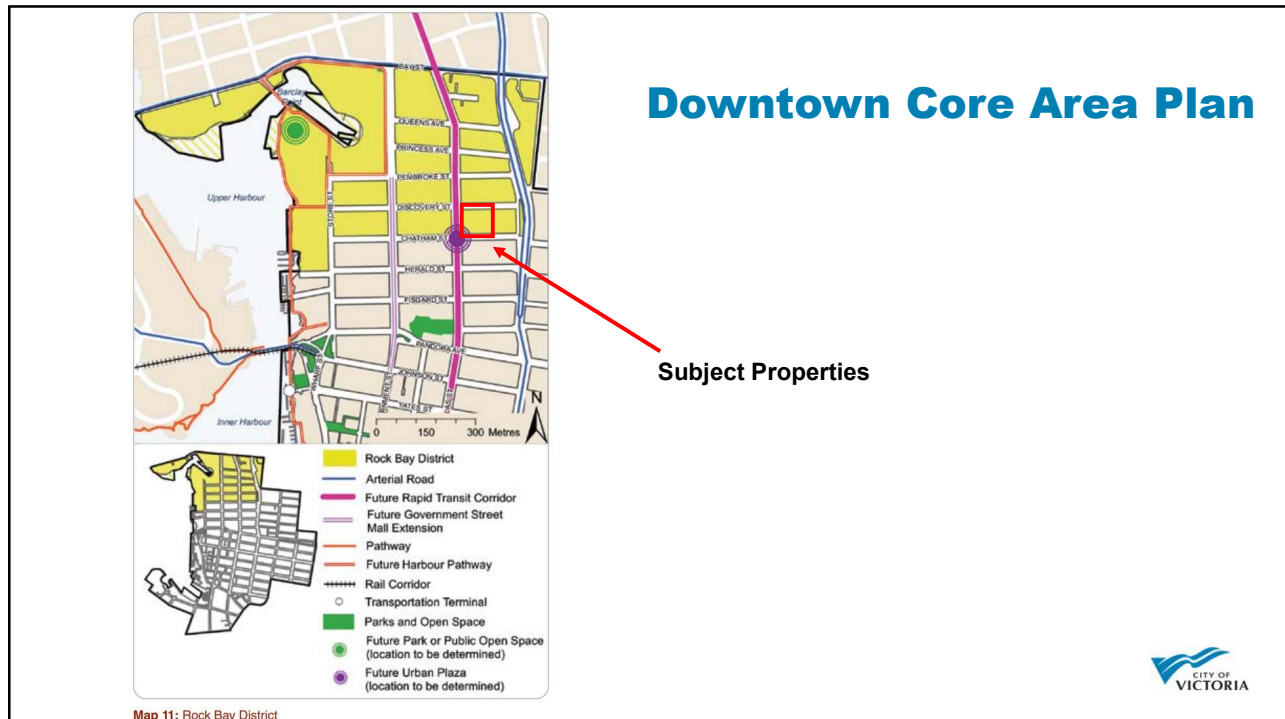
Neighbouring Properties



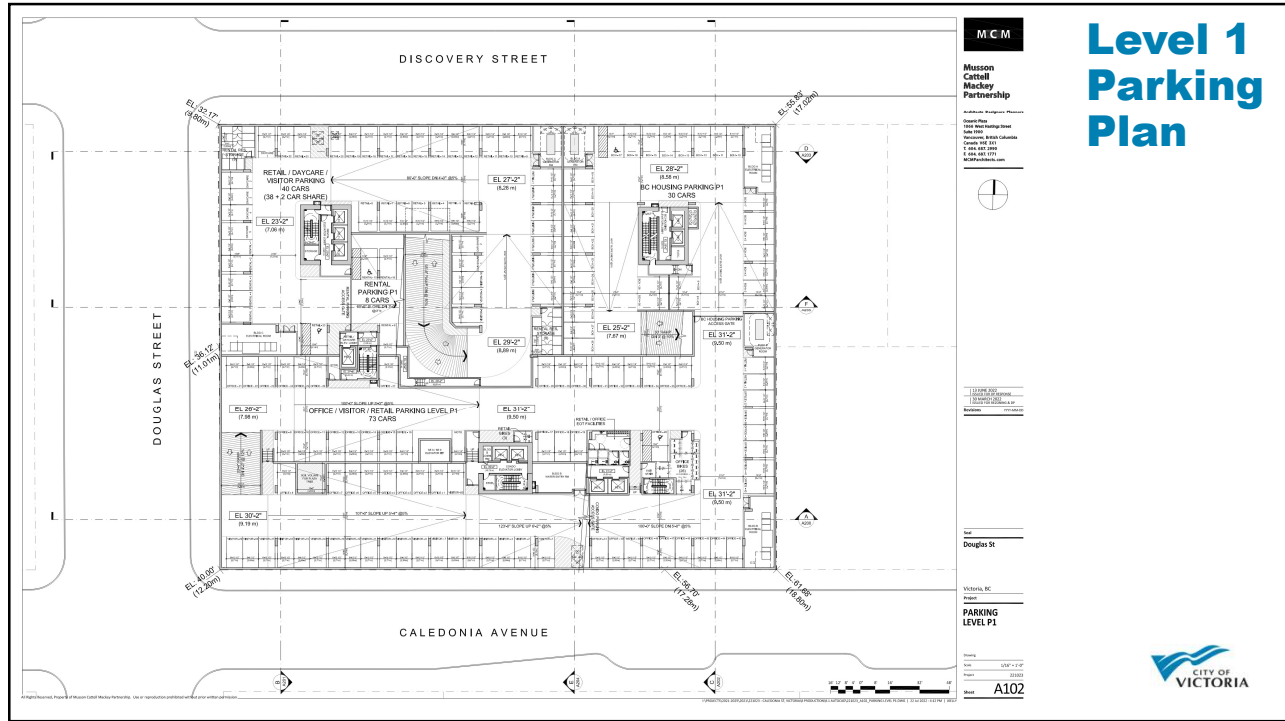
4



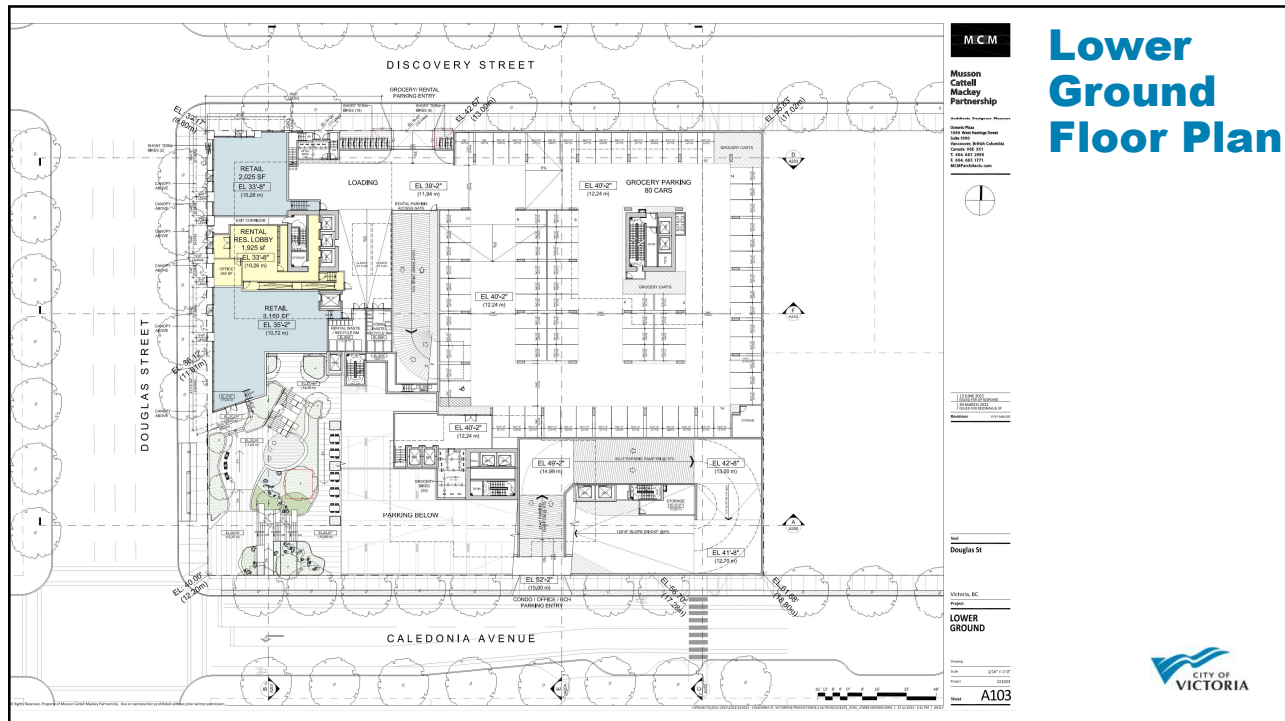
5



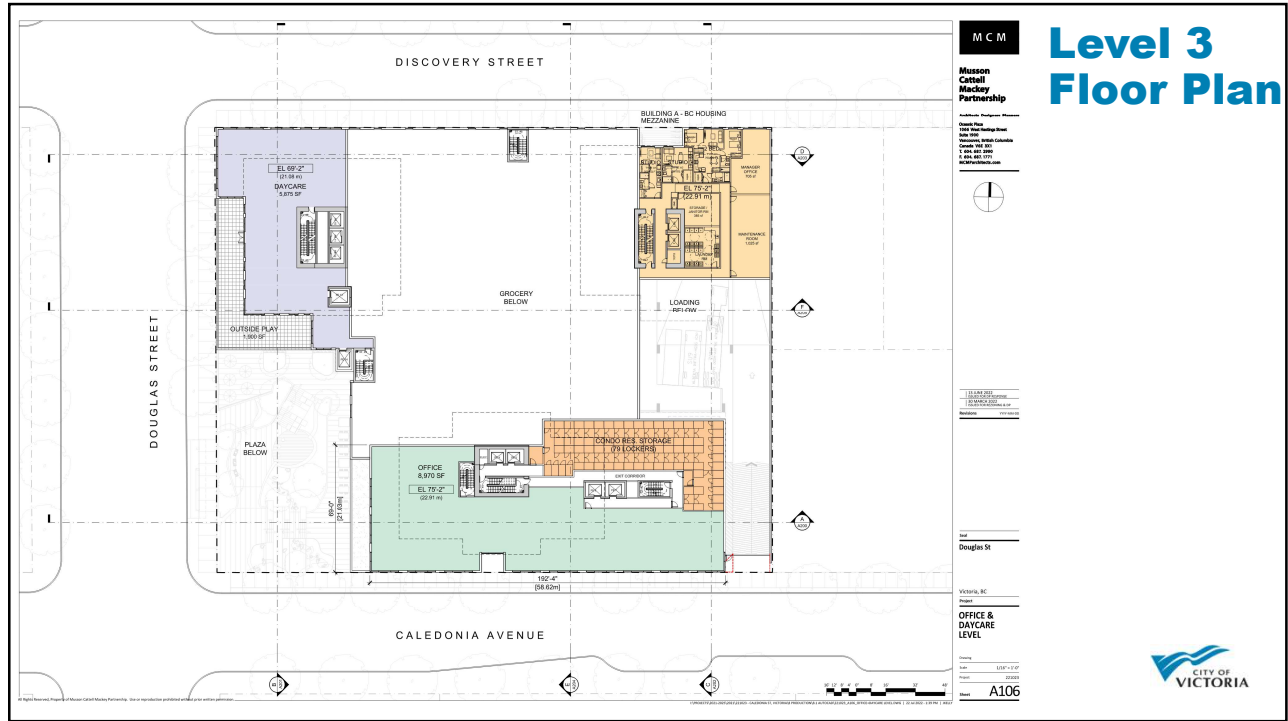
6



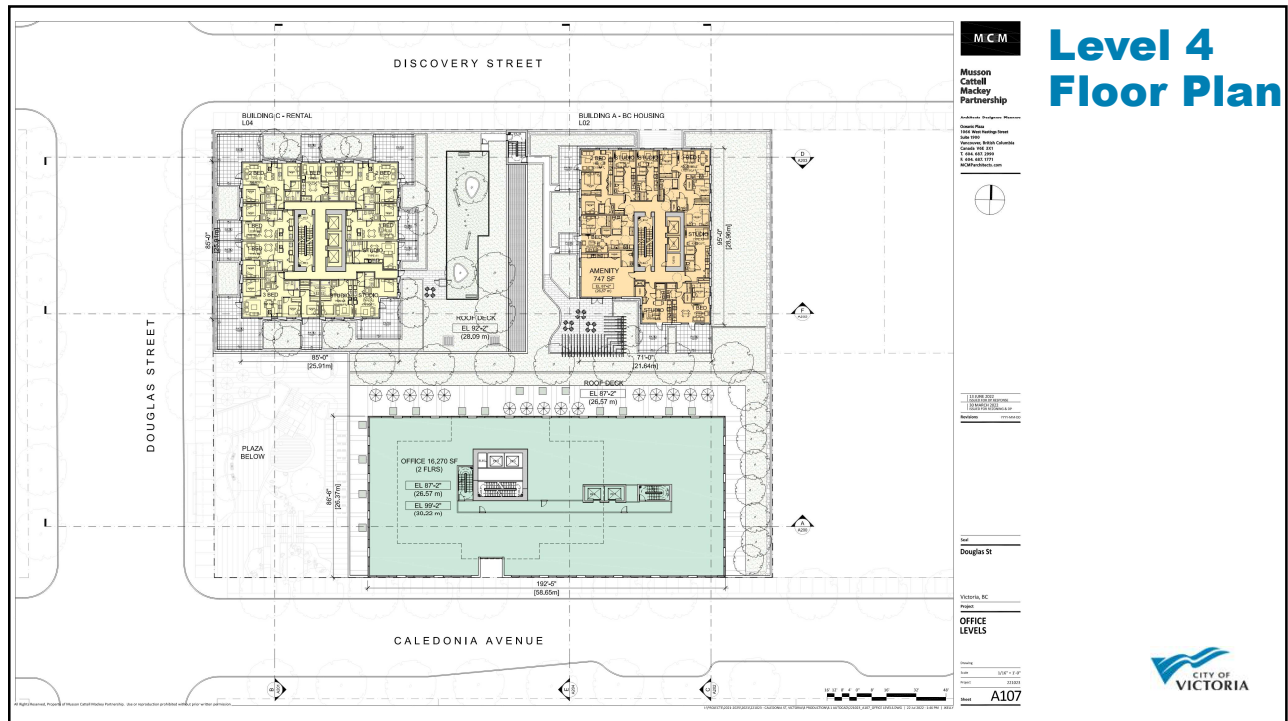
9



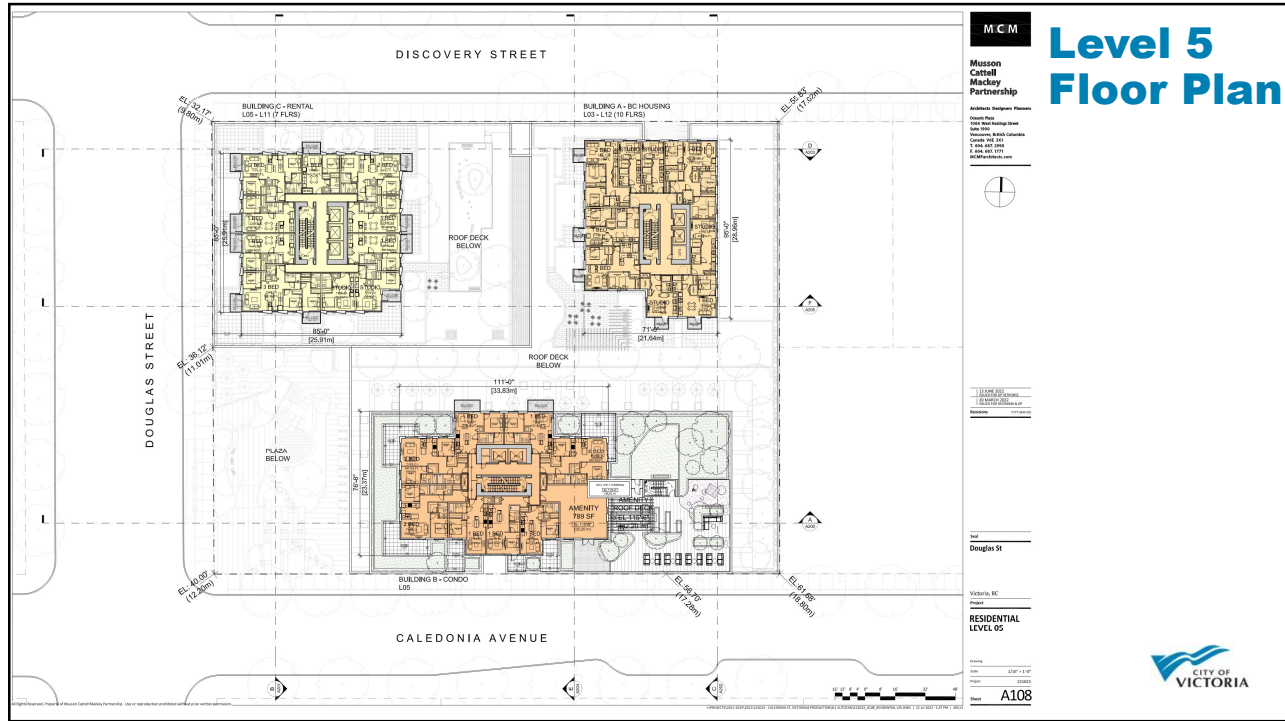
10



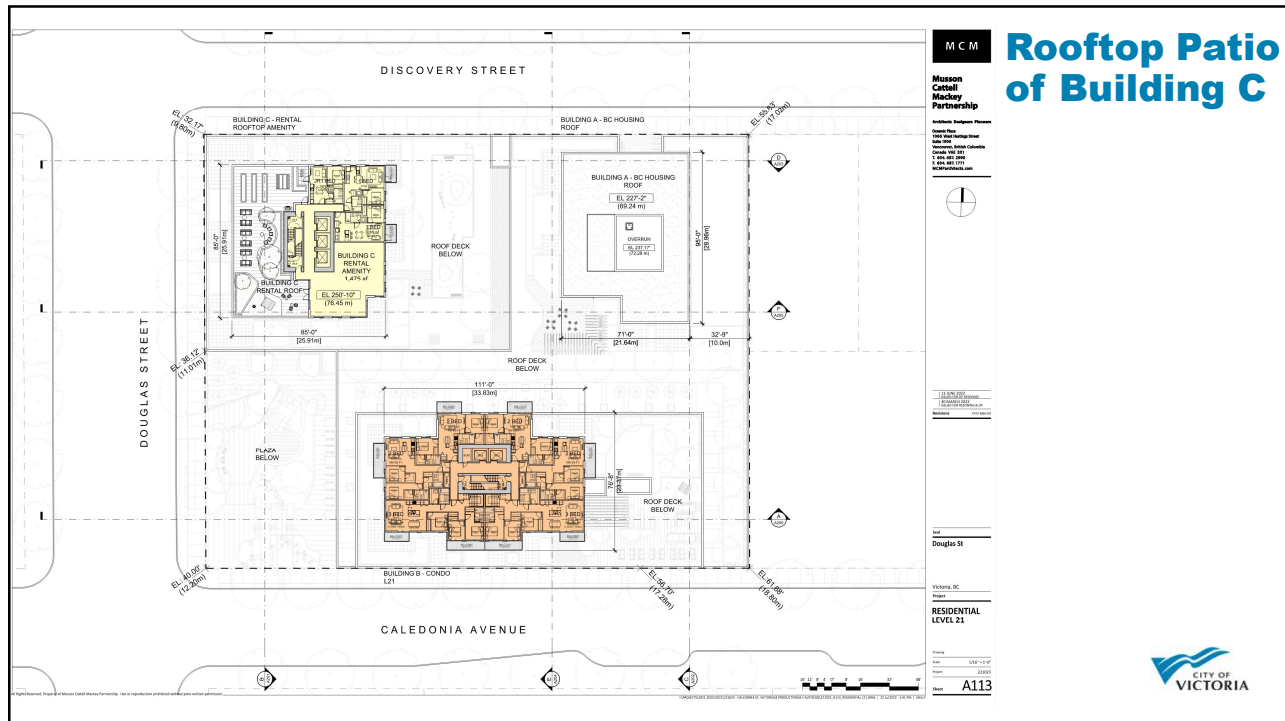
13



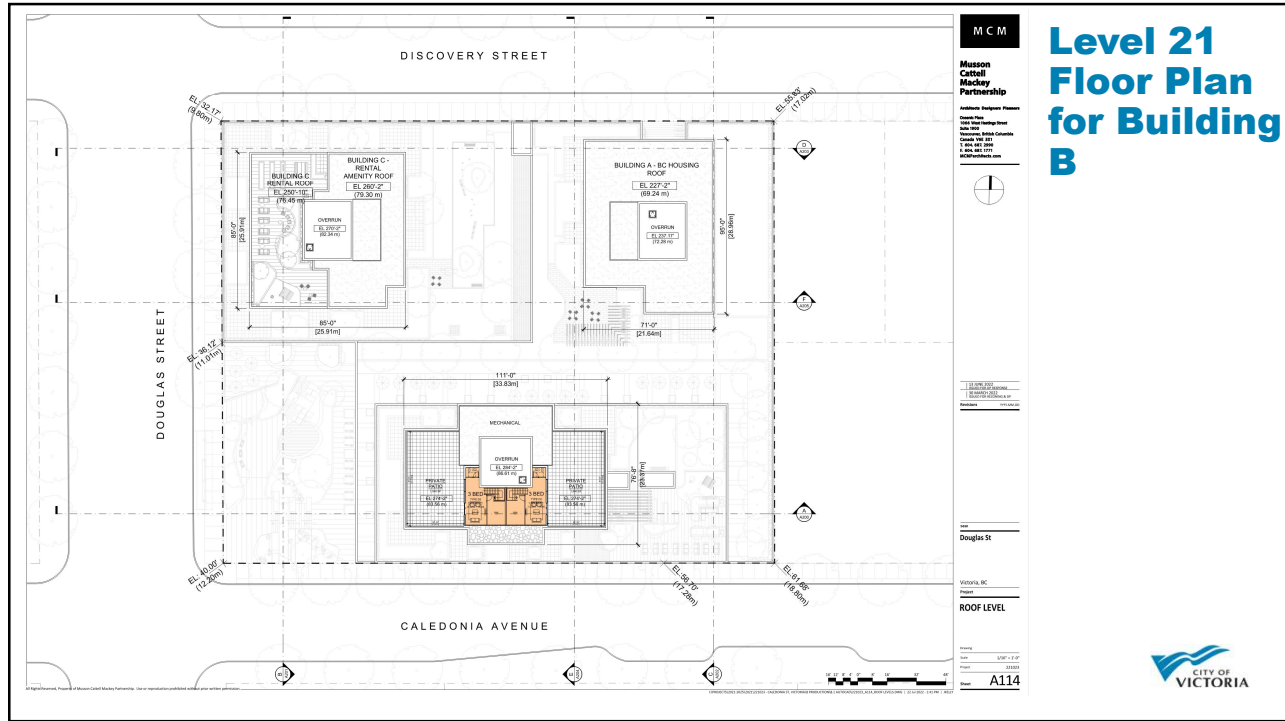
14



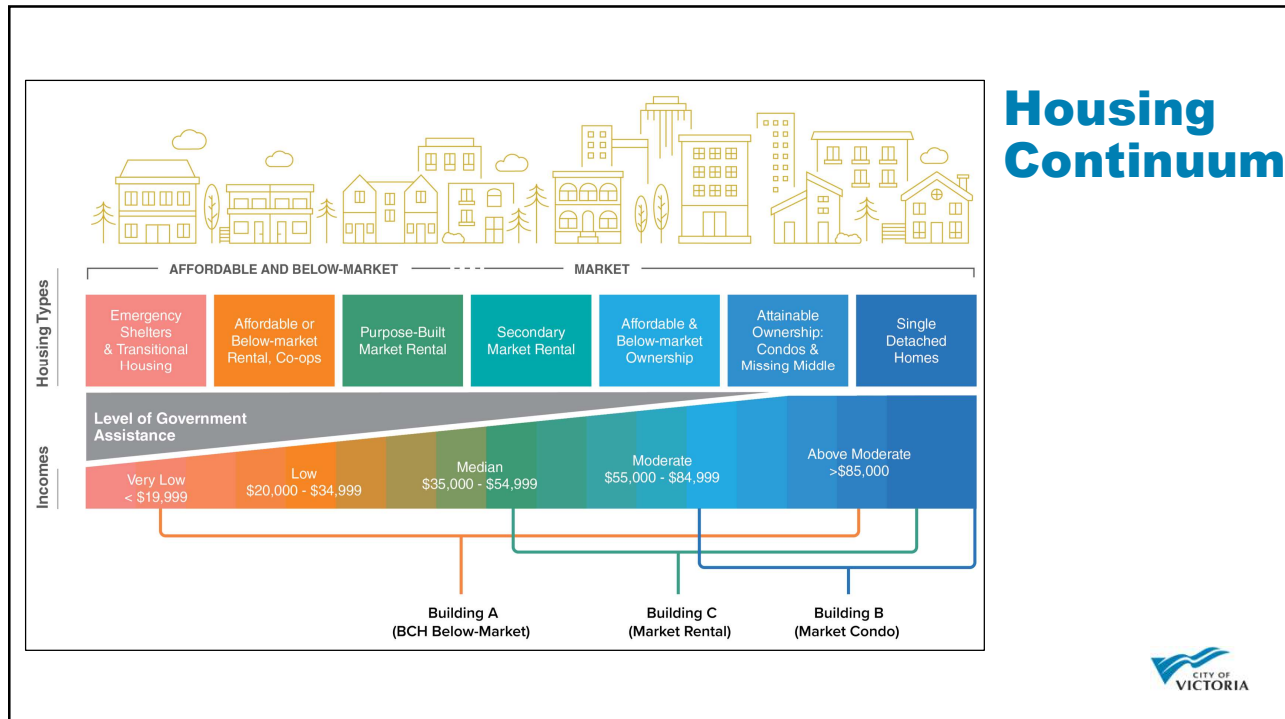
15



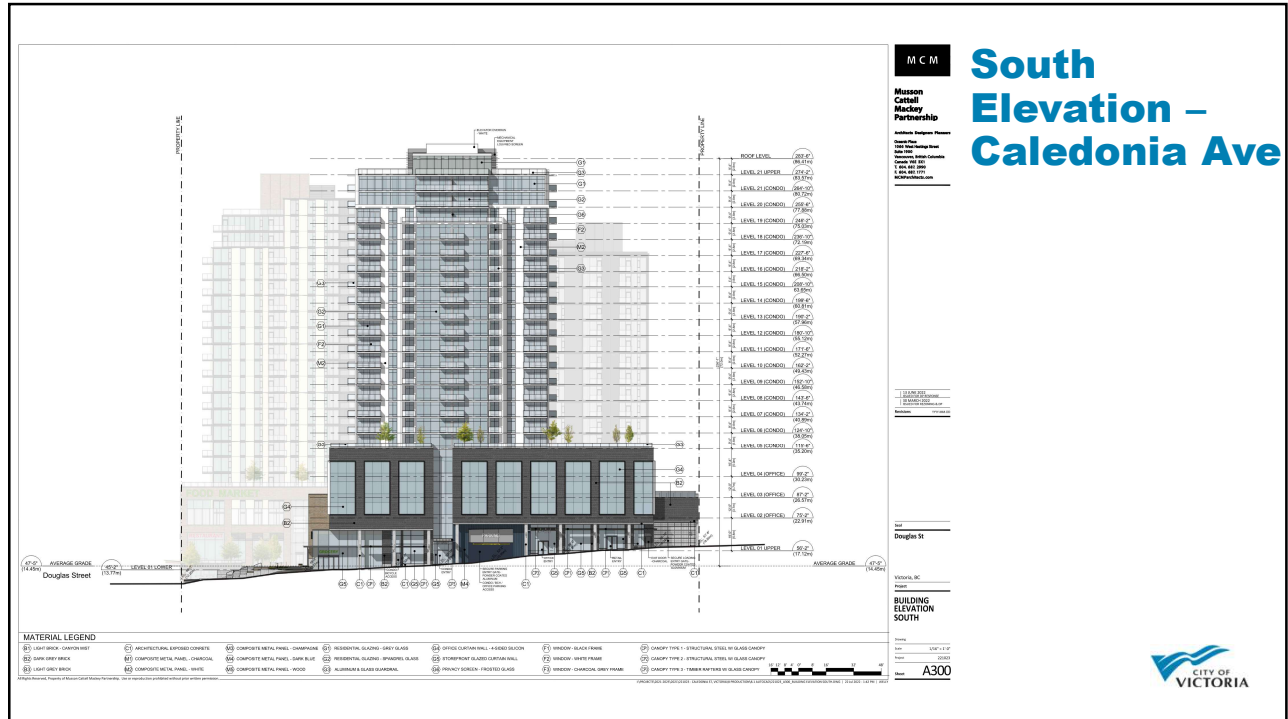
16



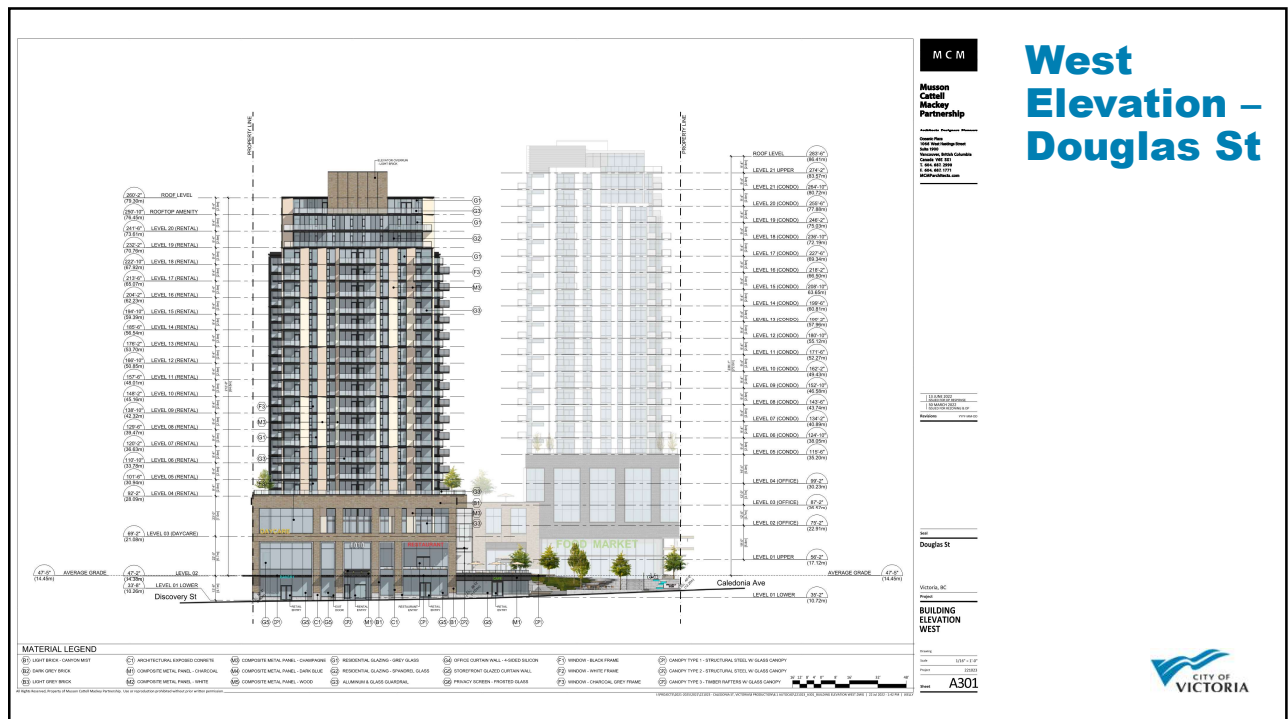
17



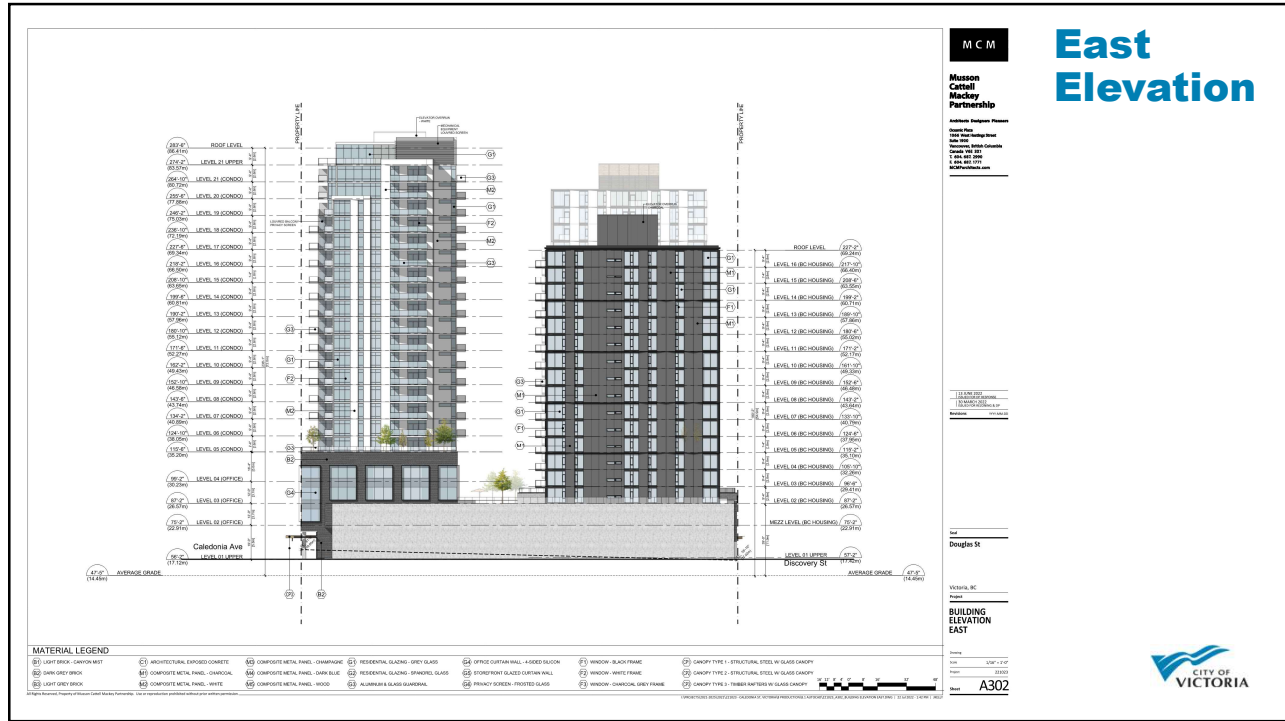
18



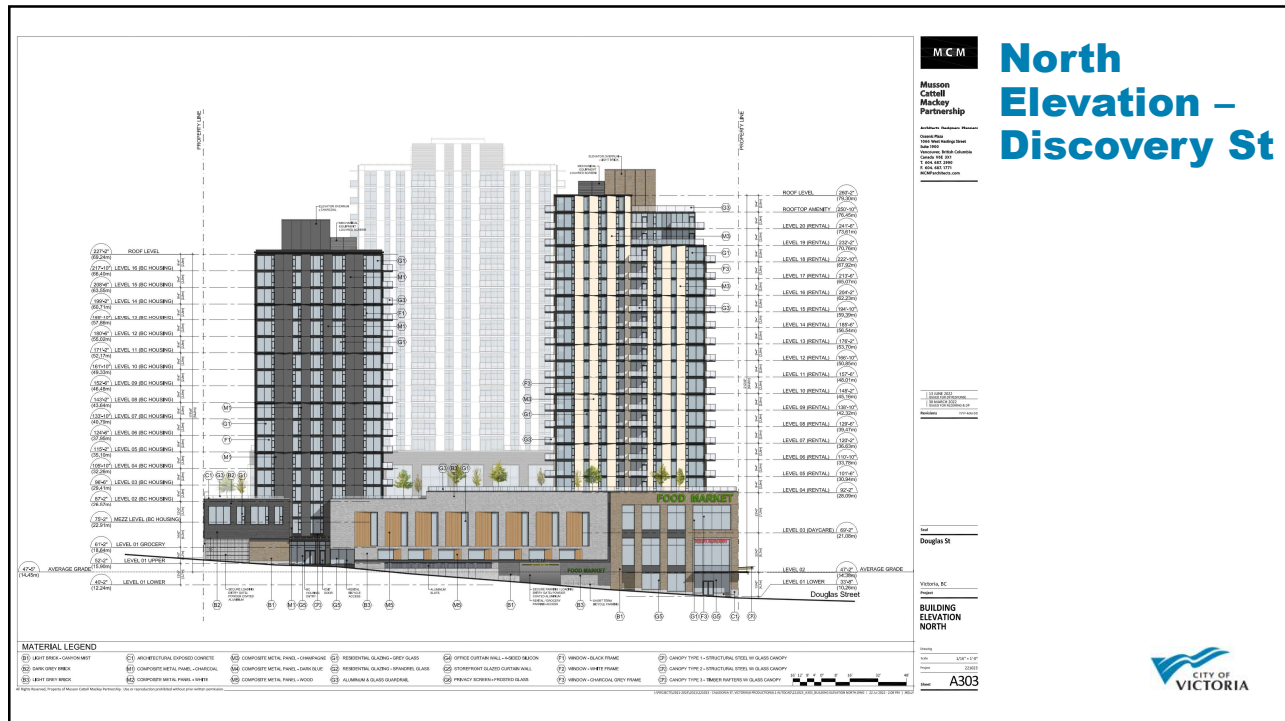
19



20





21





22

Building A (Below-market rental)



 Black Mullions



 Metal Panel- Dusty Charcoal



 Metal Panel- Greyhound



 Grey Glass (Residential)


Building C (Market Rental)



 Charcoal Mullions



 Metal Panel- Dusty Charcoal



 Metal Panel- Champagne Metallic



 Grey Glass (Residential)


 Light Brick - Canyon Mist


 Architectural Concrete


 Metal Panel- Natural Chestnut


 Flat Top Metal Mesh


 Glulam & Steel Canopies

M C M

**Mission
Cattell
Mackey
Partnership**

Architect - Architectural Partners

2000 West Broadway Street
 Suite 2000
 Victoria BC V8W 2G6
 Canada
 Phone: 250.383.3333
 Fax: 250.383.3333
 www.mcm.ca

Project Name

Douglas St


Project Location

Victoria, BC

Project Number


A502A


Material Board




23


Building B (Market Condo)



 White Mullions



 Metal Panel- Bone White



 Grey Glass (Residential)

Office Podium



 Dark Brick - Coal Creek



 Architectural Concrete


 Stainless Steel Window Surrounds


 Metal Panel- Azure Blue


 4 Sided Silicon Curtain Wall


 Glulam & Steel Canopies


 Light Brick - Canyon Mist

M C M

**Mission
Cattell
Mackey
Partnership**

Architect - Architectural Partners

2000 West Broadway Street
 Suite 2000
 Victoria BC V8W 2G6
 Canada
 Phone: 250.383.3333
 Fax: 250.383.3333
 www.mcm.ca

Project Name

Douglas St


Project Location

Victoria, BC

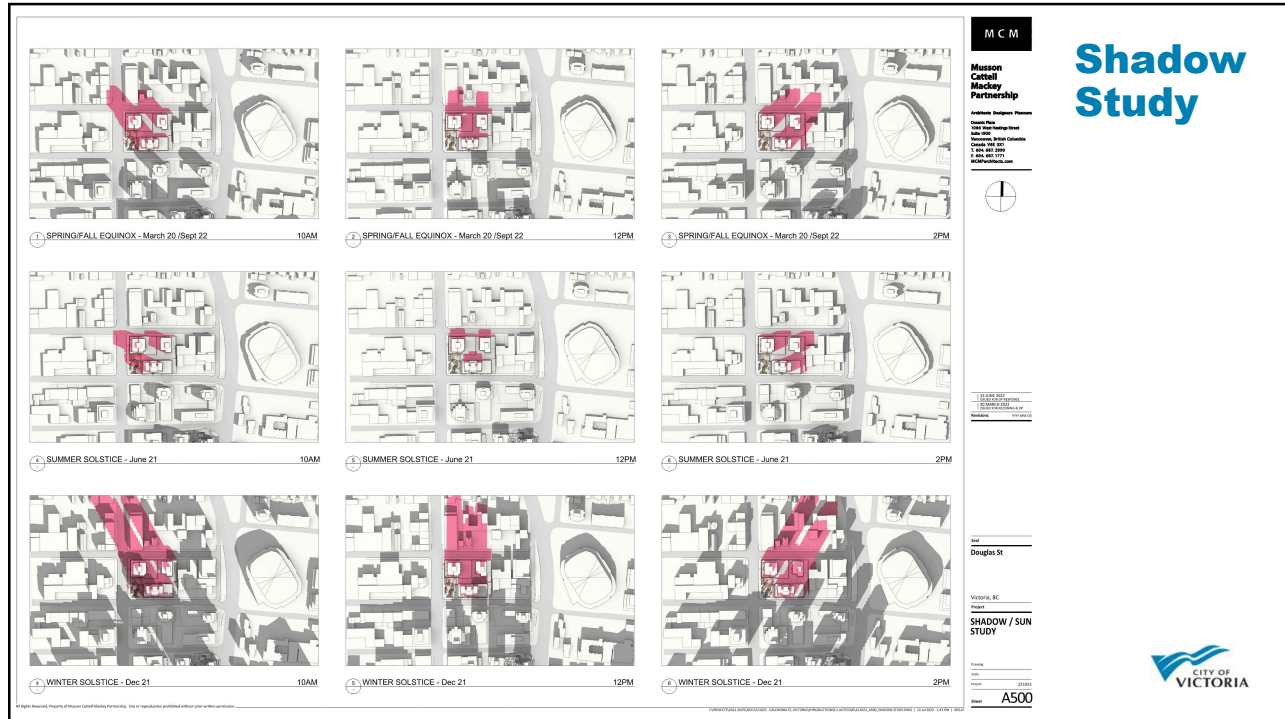
Project Number

A502B

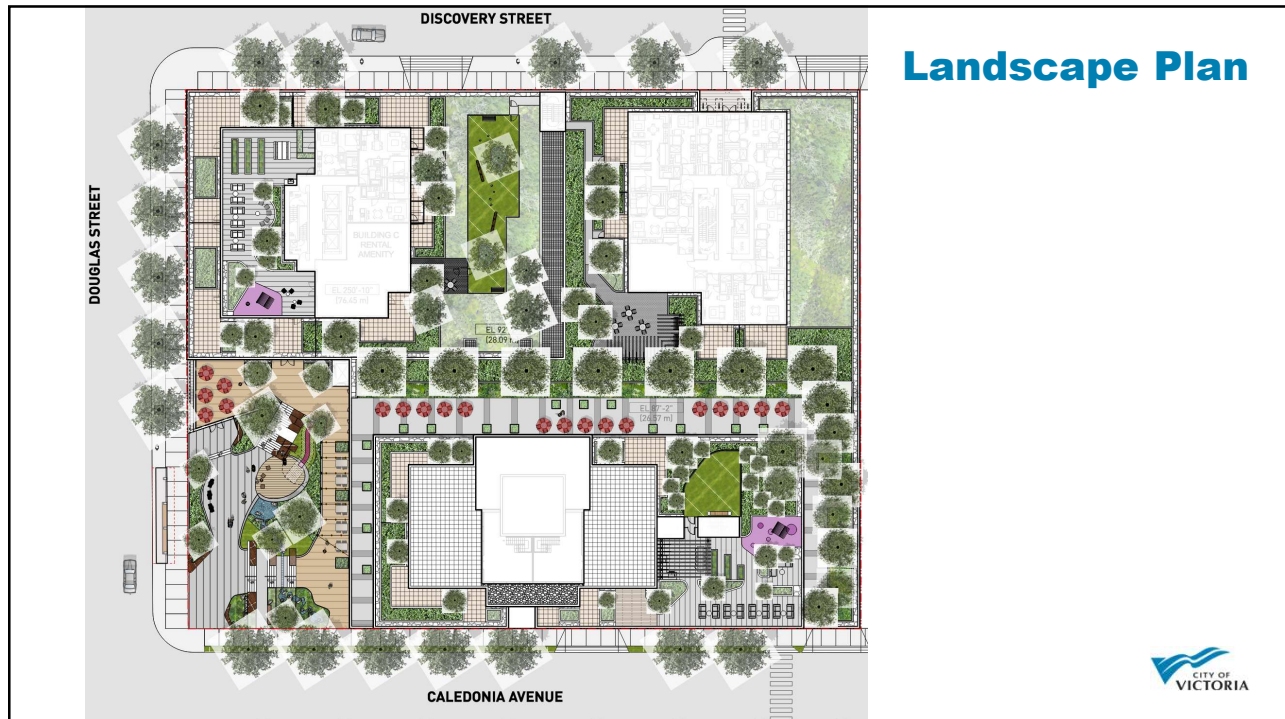
Material Board



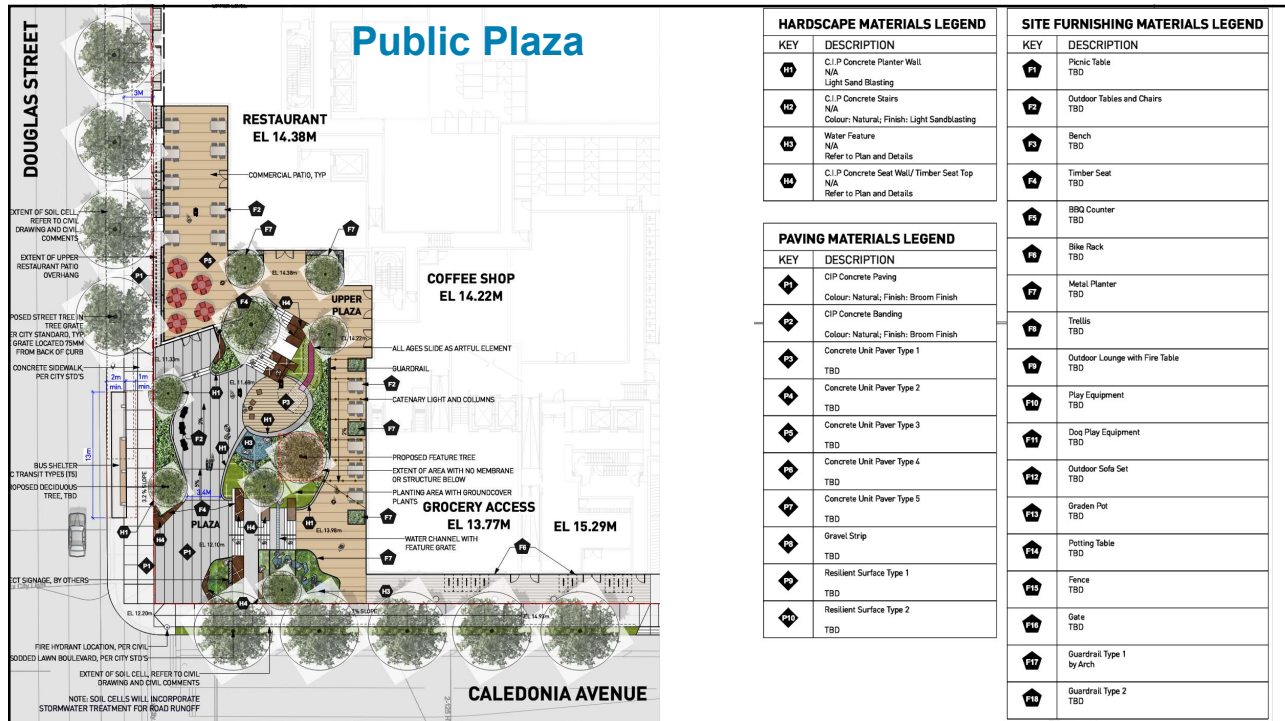
24



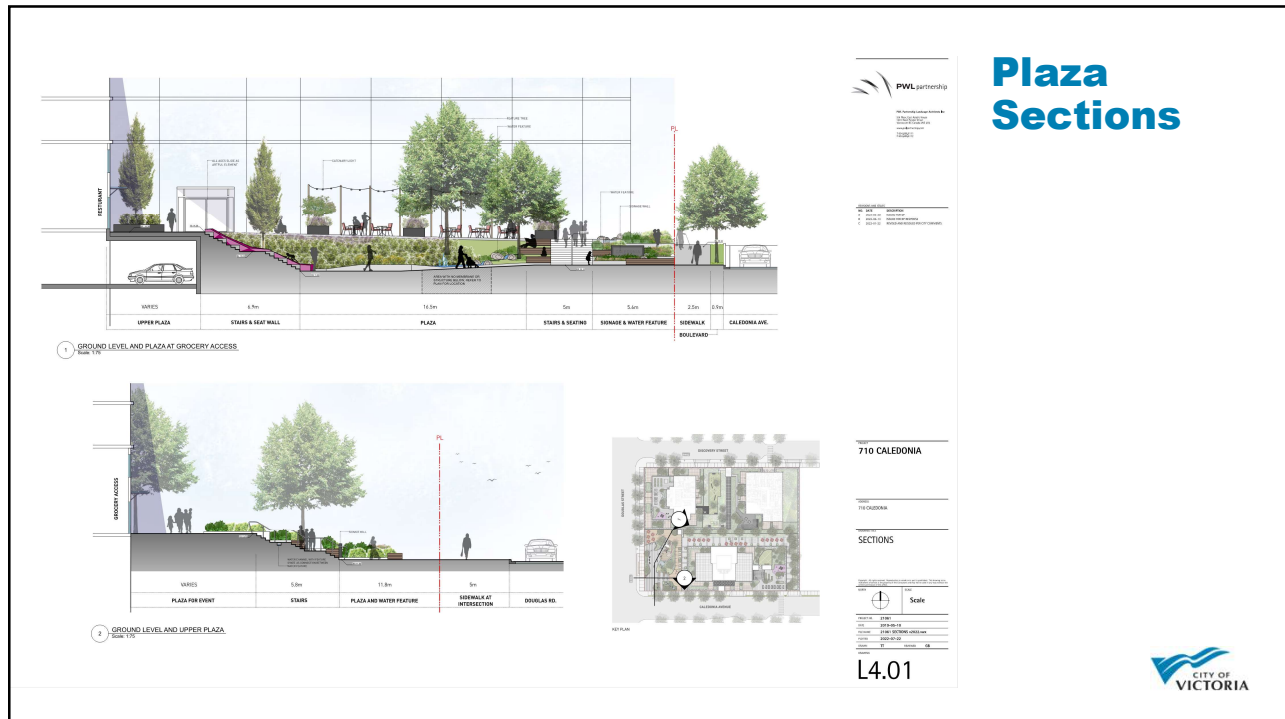
25



26



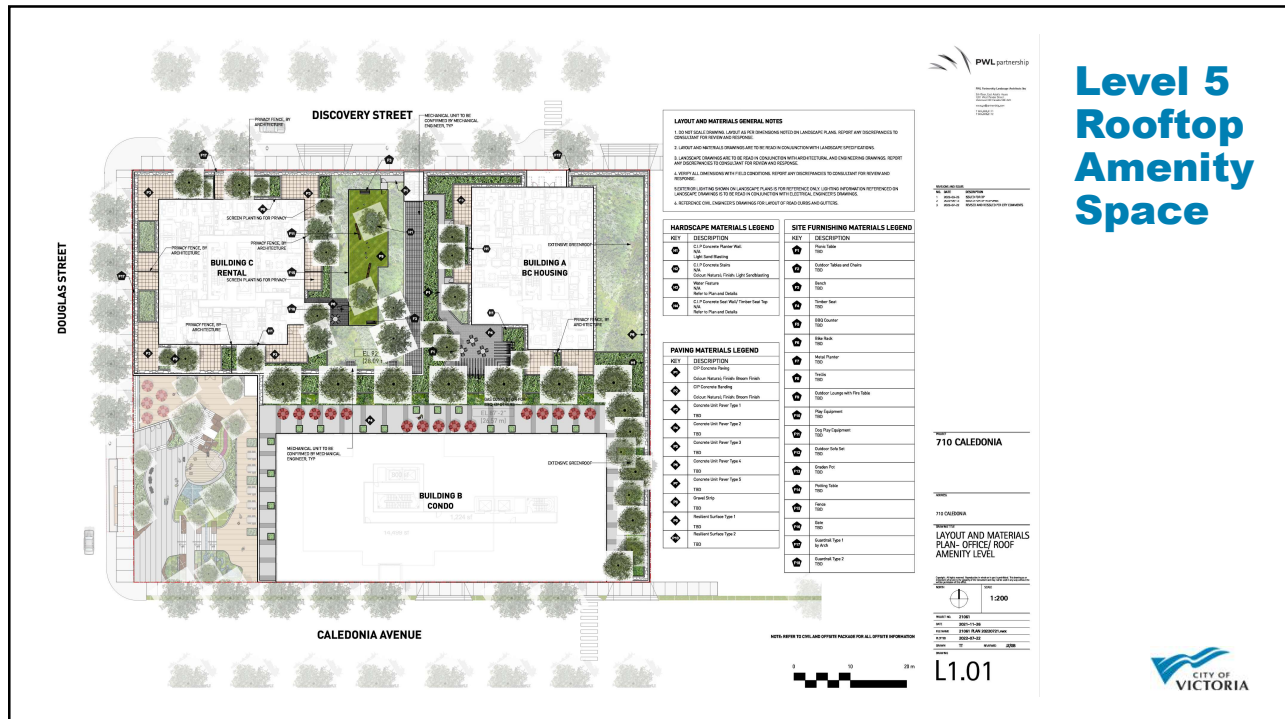
27



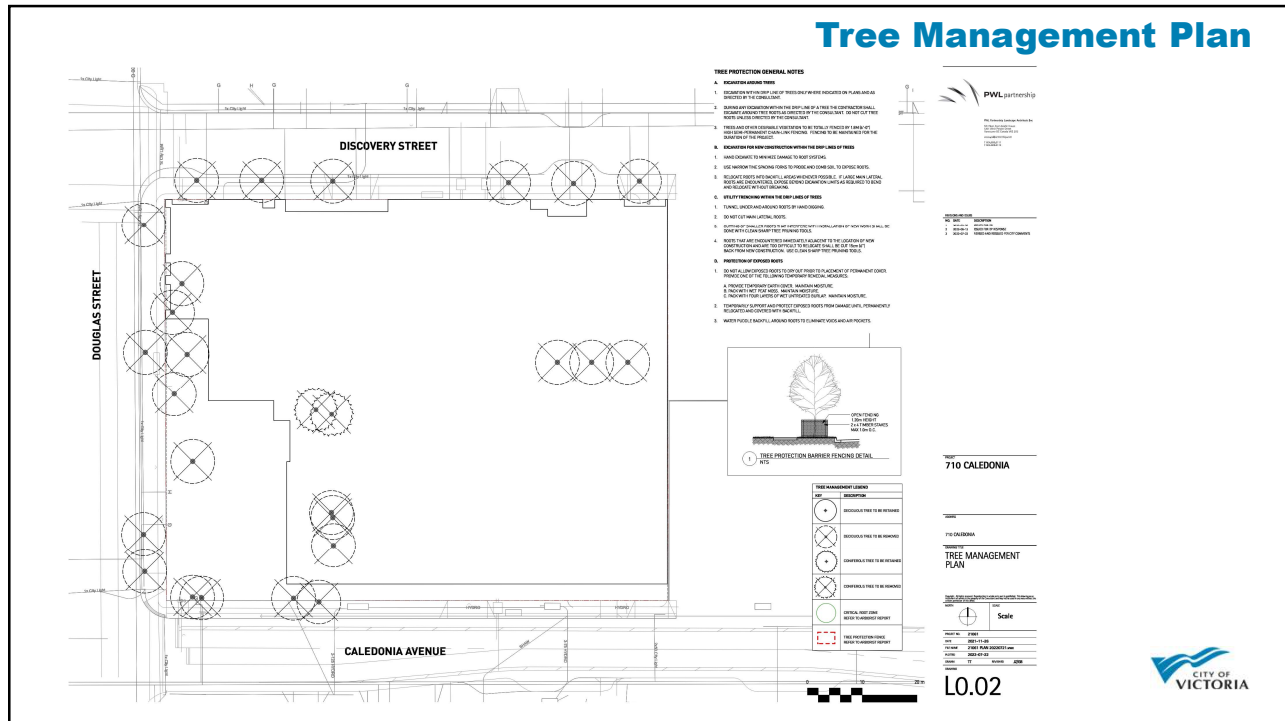
28



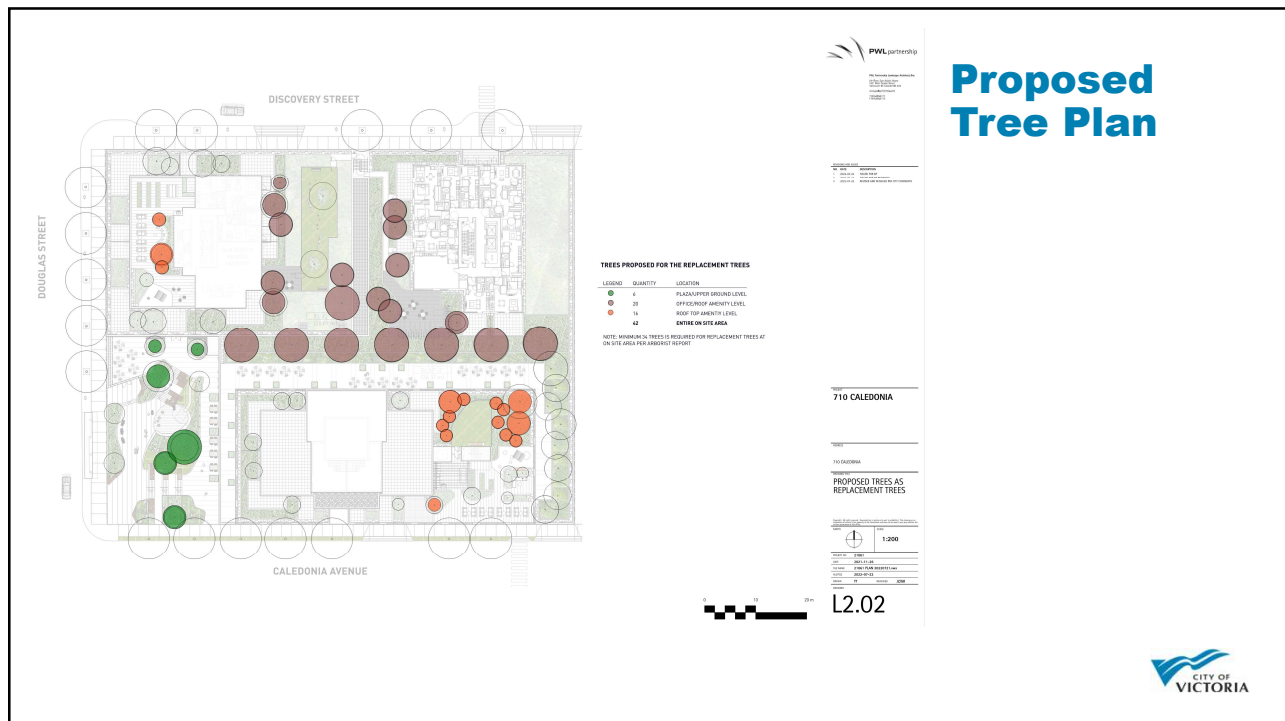
29



30



33



34



35



36



37



38