

Attachment A

Topaz Park Improvements: Phase 2 Concept Design Report

OVERALL CONCEPT PLAN

The second phase of the Topaz Park Improvement Plan builds on the design of the skate and bike parks was completed in the summer and invites park users to enjoy a host of new amenity spaces and facilities.

This phase of the park improvements will bring a redesigned leash-optional dog area with improved accessibility and overall space, improved fitness and picnic opportunities including new shade structure, brand new sports courts to meet the growing demand for pickleball in Victoria, a centralized plaza with adjacent play slope and spectator seatings for community events, socializing and sports viewing, as well as a redesigned path system that improves overall accessibility through the park.



LEGEND

- 1 Play Slope and Slides
- 2 Backstops and Spectator Seating
- 3 Sports Courts
- 4 Plaza with Light Feature
- 5 Improved Fitness Area
- 6 Picnic Area and Shelter
- 7 Playground (Existing)
- 8 Fenced Leash-Optional Area
- 9 Natural Area (Existing)
- 10 Public Washroom (Existing)
- 11 Parking (Existing)
- 12 Sport Box (Existing)
- 13 Artificial Turf Field (Existing)
- 14 Bike Park (Existing)
- 15 Skate Park (Existing)
- 16 Rain Garden (Existing)

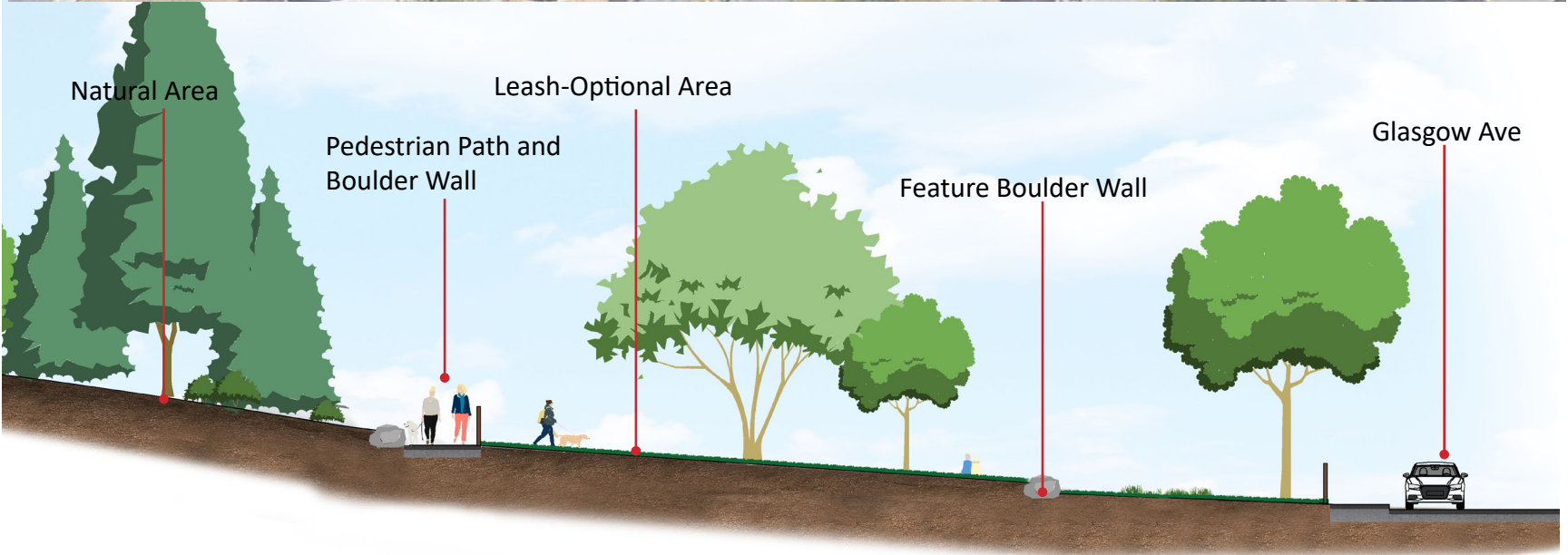
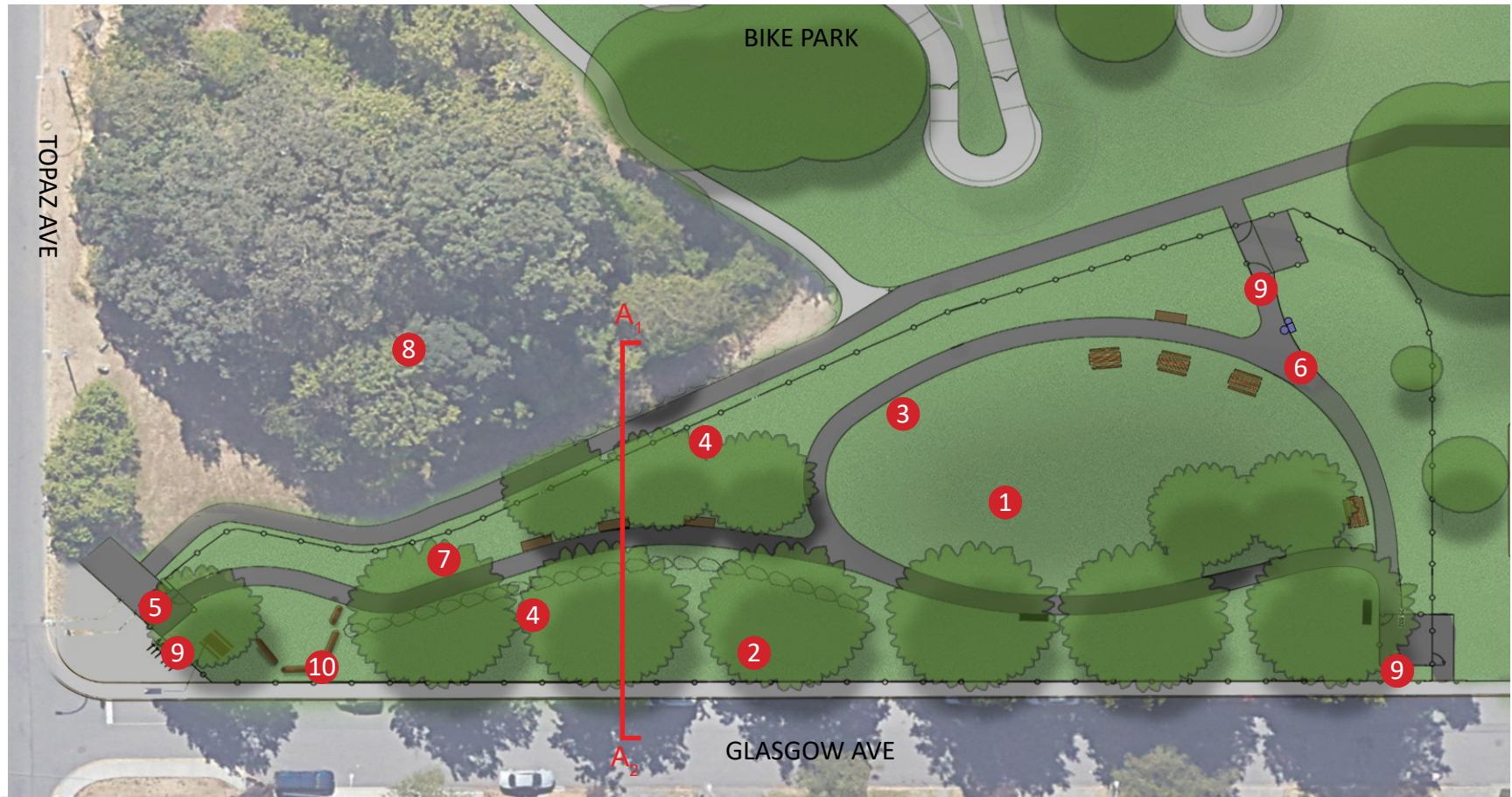


FENCED LEASH-OPTIONAL AREA

Enhancements to the dog leash-optional area will improve accessibility and year-round use. The leash-optional area will be fully-fenced with three double-gated entry points. An internal accessible looping path will create exercise opportunities while connecting into the larger park and street pathway system. Boulder retaining walls will make this previously sloping site flatter, improving accessibility and usability. A new entry feature at the corner of Topaz Ave and Glasgow Street will provide park signage, seating, bike parking, and a water station.

Legend

- 1 Leash Optional Area
- 2 Existing Boulevard Trees
- 3 Internal Walking Path
- 4 Feature Boulder Walls
- 5 Entry Plaza
- 6 Drinking Fountain with Pet Bowl
- 7 Accessible Pathway
- 8 Existing Natural Area
- 9 Double-Gated Entry
- 10 Integrated Log or Bench Seating



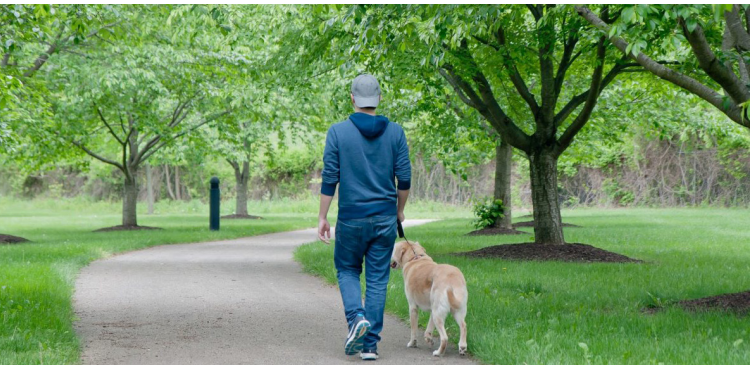
A₁ Dog Park Section A₂



Fenced Leash-Optional Area



Double Gated Entry



Internal Walking Path

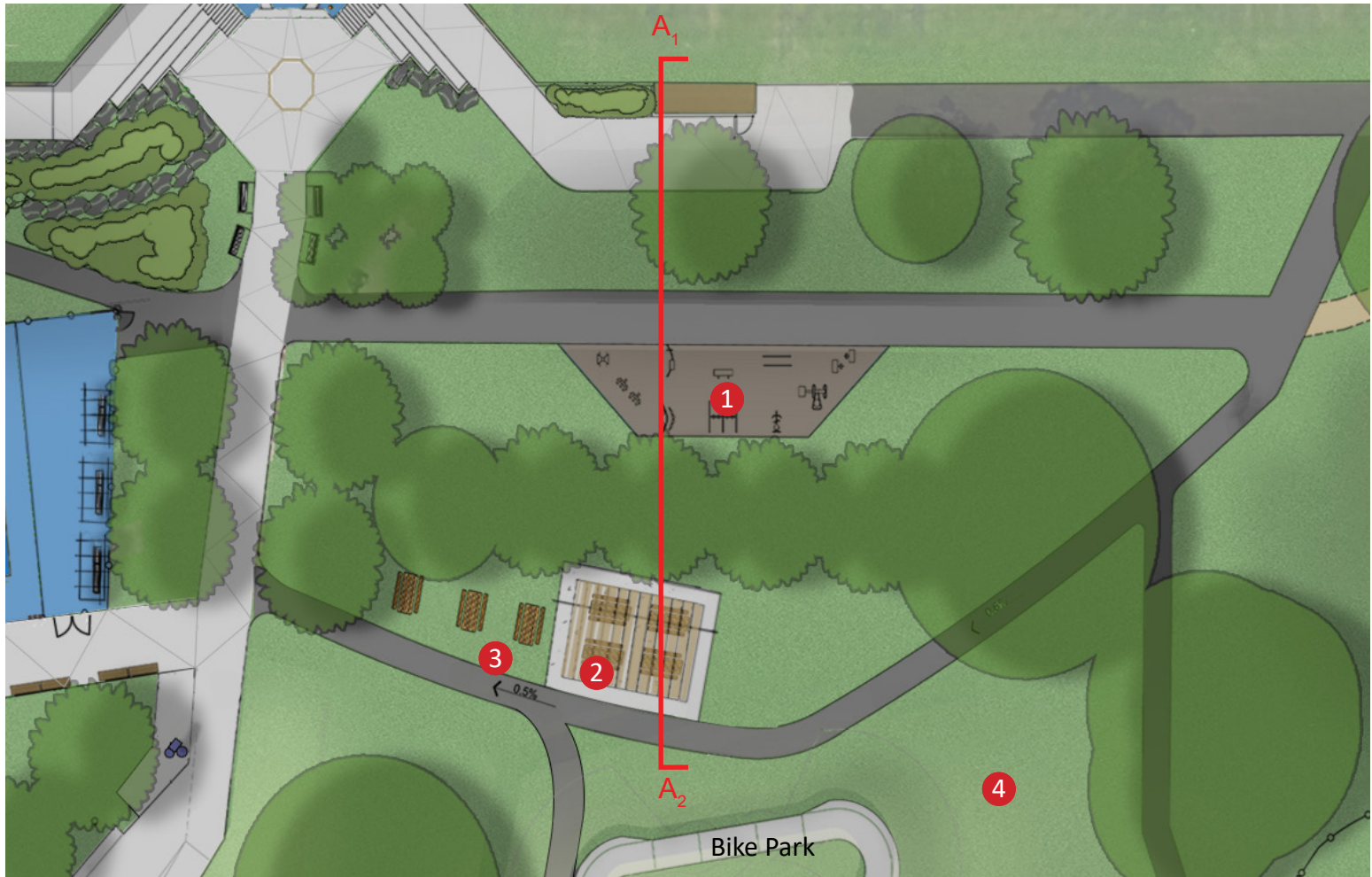


Feature Boulder Walls

FITNESS AND PICNIC AREA

The fitness area will reuse some of the existing fitness equipment, add new pieces to improve usability, and be upgraded to rubber surfacing for accessibility. The picnic area will feature a new shade structure providing relief from the hot summer sun. The picnic area will also be well situated for observing and accessing the pump track, providing an excellent viewpoint for parents supervising kids and other park users enjoying the action of the bike park.

- Legend
- 1 Training and Fitness Area
 - 2 Shade and Picnic Shelter
 - 3 Open Picnic Area
 - 4 Flexible Open Program Space



Fitness and Picnic Area Plan



Fitness and Picnic Area Section



Training and Fitness Area



Flexible Open Program Space



Shade and Picnic Shelter

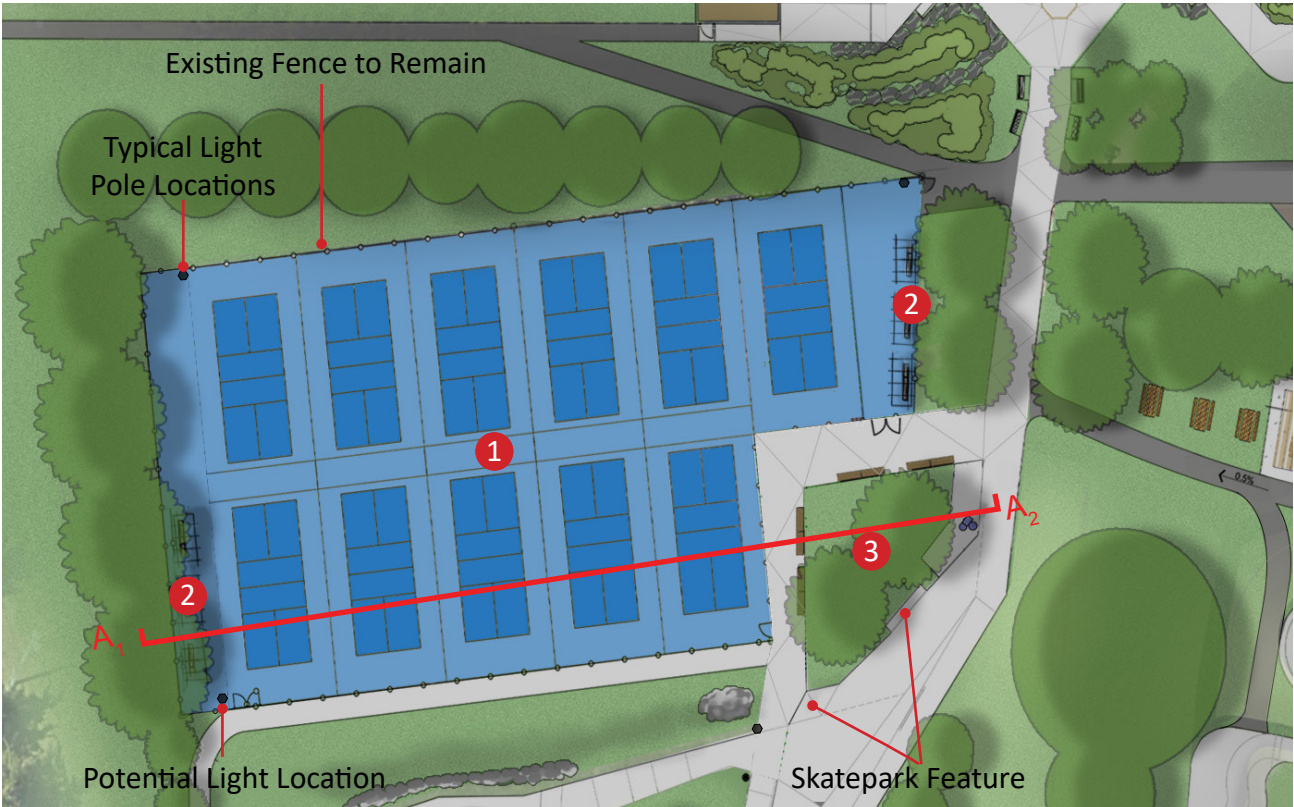


Open Picnic Area

SPORTS COURTS

The new sports courts will feature colourful surfacing, bringing excitement and energy into the space. Shaded waiting areas will provide a comfortable resting and gathering space for people waiting to use the courts. The adjacent green space (3) will provide an area for spectating both the sports courts and the skatepark while offering more space in the park for open-ended programming. The facility consists of eleven dedicated pickleball courts and will be well-suited as a tournament site.

- Legend
- 1 Sports Courts
 - 2 Covered Rest and Waiting Area
 - 3 Spectating and Open Program Space



Pickleball Courts Plan



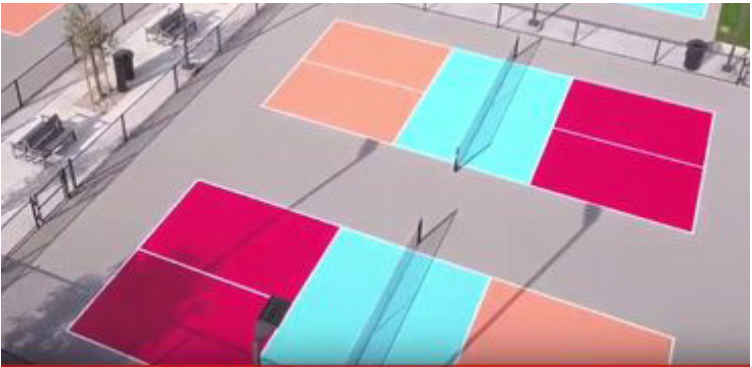
A₁
Pickleball Section



Sports Courts Precedent Image



Sports Courts Precedent Image



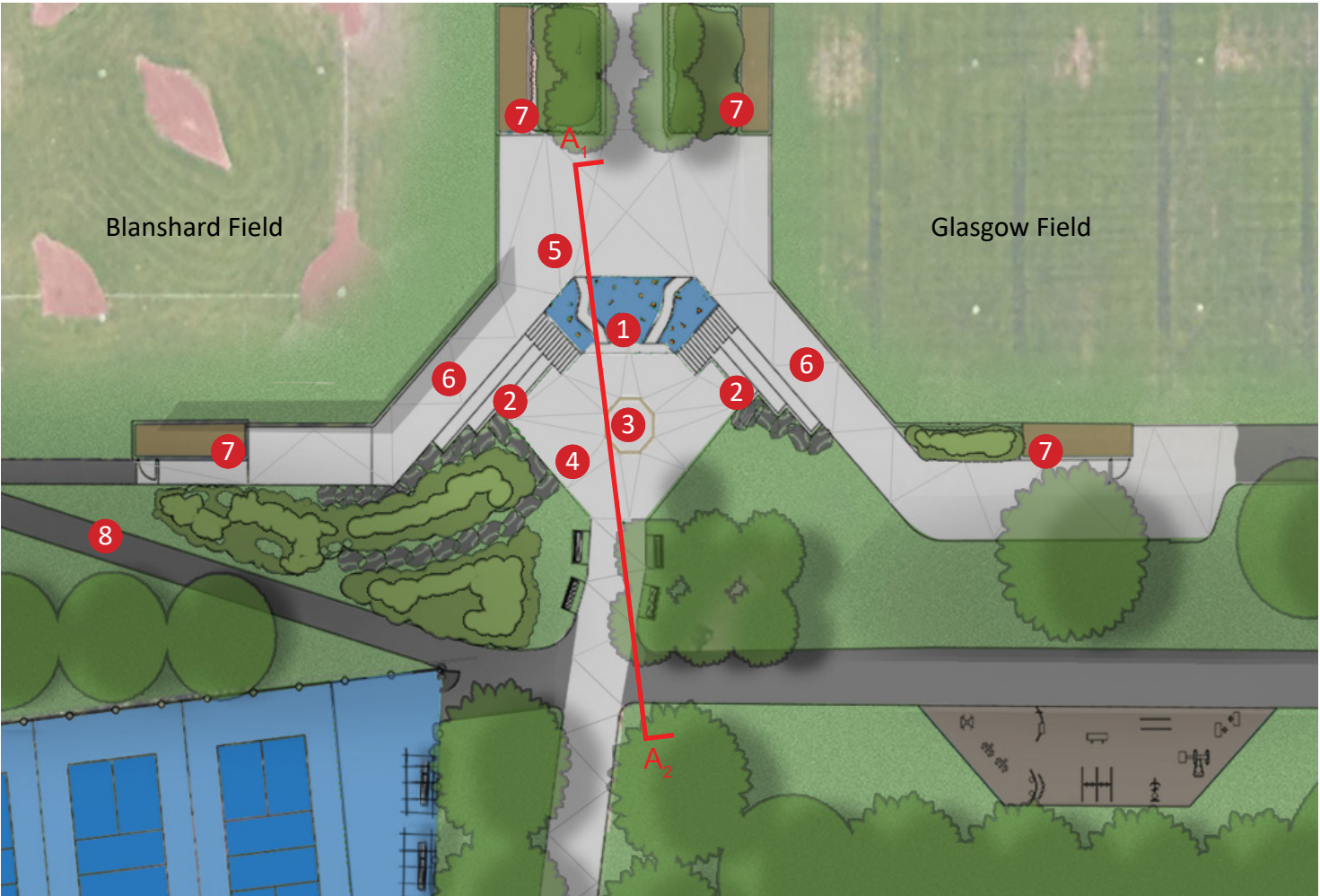
Sports Courts Precedent Image



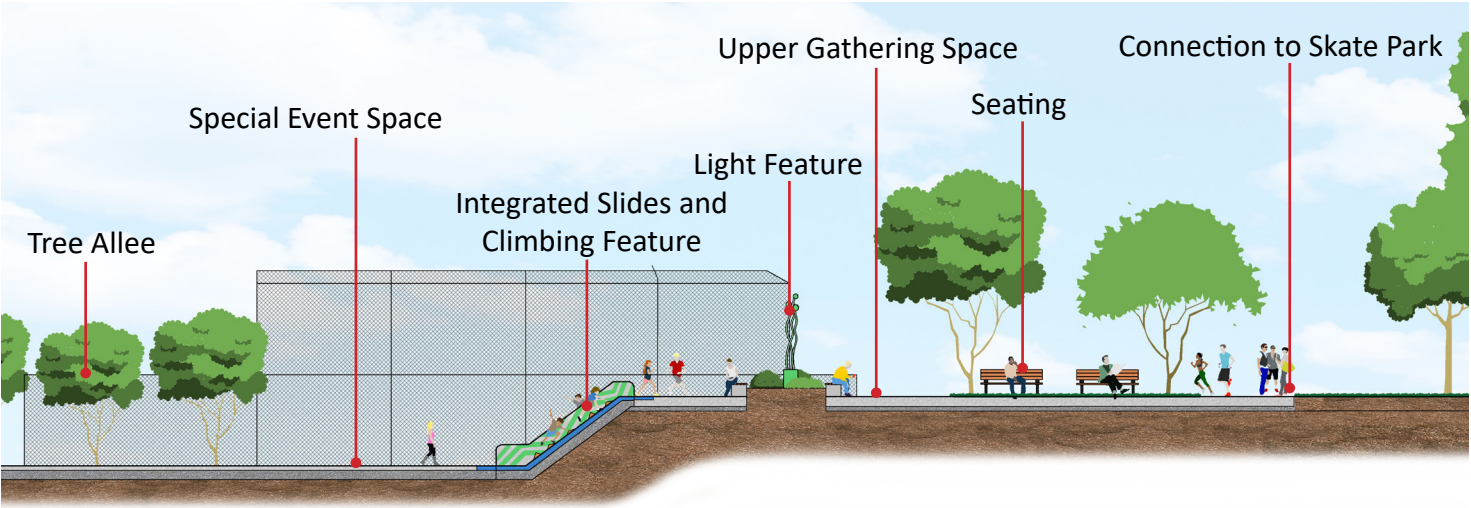
Covered Rest and Waiting Area

CENTRAL PLAZA

This area is the social heart of the park, providing a central gathering space for people using any of the amenities across the park. It will provide ample space for events and festivals and includes vehicle access to both the upper and lower areas. Behind the backstops, new integrated spectator seating will provide excellent views of the sports fields as well as seating and social space during events. Running down the centre of these grandstands will be a feature play area, with a rubberized climbing surface and two slide options. A lighting feature ties the sports hub together and creates a central focal point for park users across the site. Blanshard field will have a raised perspective due to the surrounding grades and accessibility allowing the field to have a small concrete backstop.



Central Plaza Plan

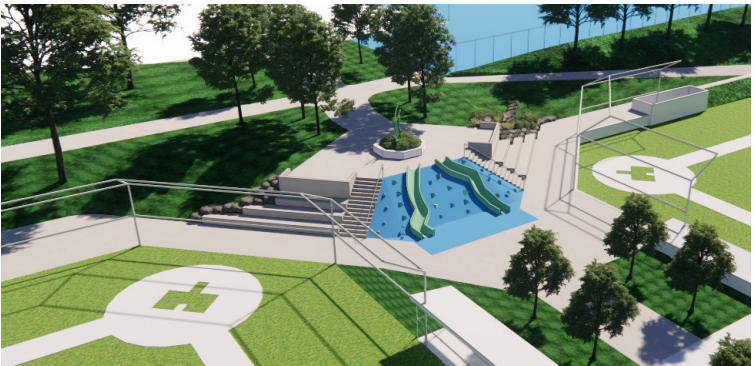


Central Plaza Section

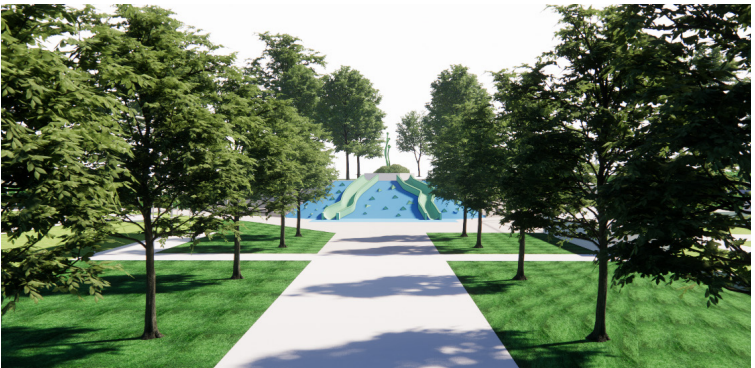
- Legend
- 1 Integrated Slides & Climbing Feature
 - 2 Spectator Seating
 - 3 Light Feature
 - 4 Upper Gathering Area
 - 5 Lower Special Events Space
 - 6 Backstops
 - 7 Dugouts
 - 8 Accessible Path Connection to Artificial Turf Field
 - 9 Accessible Path Connection to Blanshard



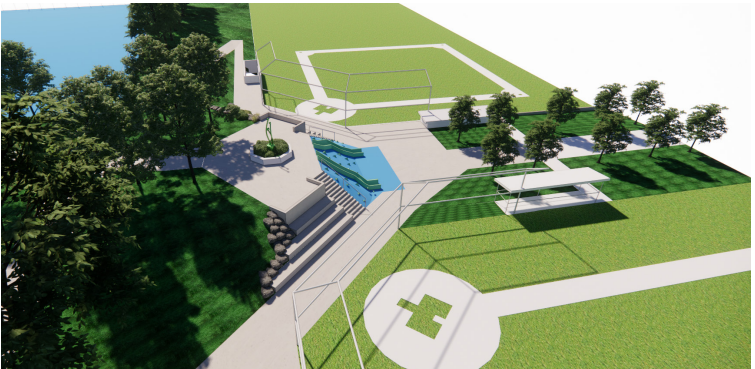
3D Rendering Image



3D Rendering Image



3D Rendering Image



3D Rendering Image

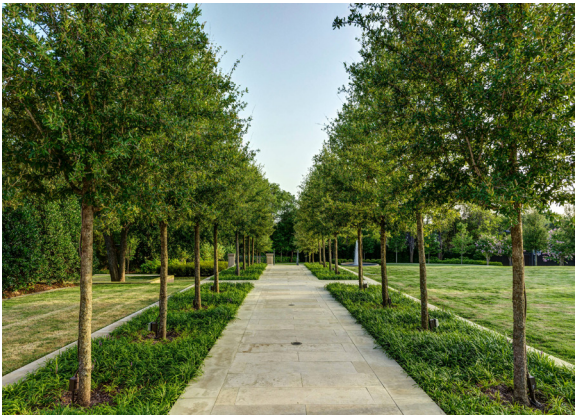
PRECEDENT IMAGERY



Integrated Slide



Seating



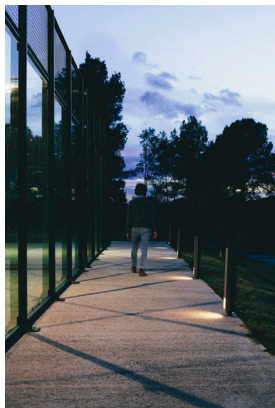
Tree Allee



Grandstand Seating



Lighting Options



Sports Courts



Exercise Equipment



Picnic Shelter

PERSPECTIVE SKETCH

