

We respectfully acknowledge the Traditional Territory of the Ləkʷəŋən speaking peoples and that the Songhees and Esquimalt Nations have a historic and ongoing relationship with the harbour. We extend our appreciation to Songhees and Esquimalt Nations as well as the W̱SÁNEĆ peoples for the opportunity to operate our business and live within this vibrant region.

1

700 Government Street

1. Overview
2. Permit Process
3. Details
4. Alignment OCP, DCAP, Ship Point

2

Overview - Location

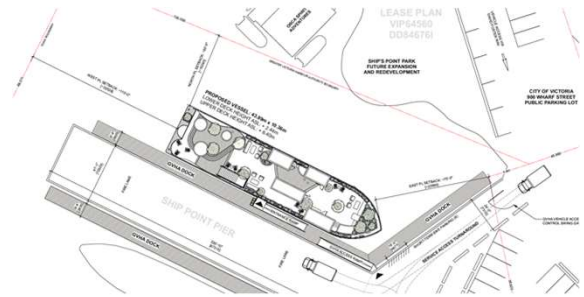


700 Government Street

Ship Points South

Zone IHSS

Controlled by the GVHA



3

Overview - Existing Zoning Uses

Why is a rezoning necessary ?

Current bylaws allow private moorage boats and activities where the boats untie from the dock with visitor on board. Our boat will not untie from the dock with visitors on board. Our request is to consider expanding the permitted usage to include: **Recreational facilities.**



4

Permit Process - Actions to Date

- | | | | |
|----------|--|---|---|
| 1 | Full council support at COTW, September 29th | ➔ | 8 City Councillors and Mayor of Victoria vote to YES to the application |
| 2 | Victoria Advisory Design Panel (ADP) | ➔ | The ADP support the design with no suggested revisions. |
| 3 | GVHA support the proposal and vote YES | ➔ | The GVHA control of the waterlot where the boat will be located and desirer the application to be approved. |
| 4 | Community Support | ➔ | Support from over 300+ community members and over 20+ businesses. |

5

The Boat



6

Alignment OCP, DCAP, Ship Point : Victoria's Vision

2001 Ship Point's revitalization is envisioned

VICTORIA HARBOUR PLAN



CITY OF VICTORIA
Adopted by Victoria City Council November 1, 2001
Revised August 30, 2012

2014 Concept plans and guiding principles are established



2018 Ship Point Master Plan is completed. 2022 Council requests Ship Point activation ideas



DCAP long term visions of the downtown region are generated



OCP Victoria's 30-year plan, providing direction for growth and change in our community



9

Victoria's Vision

Official Community Plan (OCP)

1. **Encouraging a mix of active shoreline uses** including public recreation, small craft launching and moorage, marine restaurants, pubs and float homes.
2. **Strong Local Communities:** Support and enhance the sense of place and community, and the uniqueness of Victoria's neighbourhoods.
1. **Downtown Vibrancy:** Reinforce the regional role of Downtown Victoria as a vibrant, engaging centre for employment, living, arts, culture, entertainment, tourism, and business.
1. **Community and Economic Development:** Encourage and support businesses and organizations whose purpose is to solve a market failure or to improve social well-being in other ways.



10

Victoria's Vision

Downtown Core Area Plan

- 1. **Support the location of leisure, education, arts and cultural activities** within the Downtown Core Area to both encourage greater local use and increase tourism and investment.
- 1. **Support the retention of existing and the development of new, tourist and visitor attractions and facilities** in order to continue to support and increase the number of tourists and visitors to the IHD and surrounding area.
- 1. **Ensure that new development within the IHD accommodates** uses that contribute to the vitality and economic health of the area.
- 1. **Support the development or establishment of new visitor attractions** that serve to enhance the prominence of the IHD as a world-class destination.
- 1. **Work with business, community and agency partners to develop** a broader range of attractions in the Downtown Core Area.



Victoria's Vision

Ship Point Master Plan

“When celebrated, the **interface between a community and its waterfront** provide an exciting prospect for natural and human ecologies to overlap and **create the most productive, engaging and vibrant public spaces in the world.**”



Community Support



ATTRactions
VICTORIA

DESTINATION GREATER
VICTORIA



15

Summary

- ✓ Supported by business organization
- ✓ Supported by local residents
- ✓ Aligned with City of Victoria's community values and visions
- ✓ Supported by all former council
- ✓ Supported by ADP
- ✓ Supported by GVHA
- ✓ Safety requirements met

16

Additional Slides

17

Social Responsibility

We are focused on meeting the highest sustainability standards available today, setting the bar for future development of the inner harbour.

- Energy Efficient
- Building Material Reuses
- Transportation
- Urban Forest
- Partnered with Synergy to meet business objectives towards sustainable construction



18

Community Benefits

1) Economic recovery and development year round

Living Wage Employer, 20+ new jobs. Reactivate and animate Victoria's downtown cores, main streets, and business districts through activities, public art, and mixed-use spaces.

1) Increase in local tourism

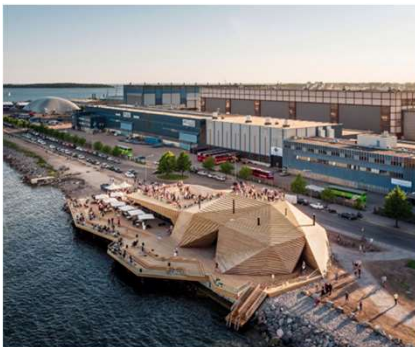
Integrate healthy and active shoreline uses into Victoria's Inner Harbour, connecting businesses, residents, visitors, and other community members in ways not currently available in Victoria.

1) Enhanced reputation as a destination

Building a recreational space like this would enhance Victoria's reputation as a destination that offers a range of high-quality amenities.

19

Global and National Examples



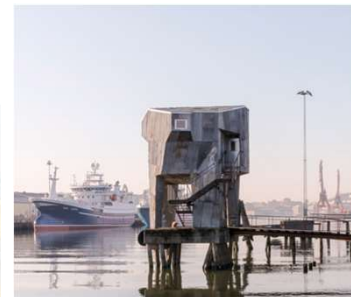
1. Helsinki, Loyly



2. Montreal, Canada



3. Oslo, Finland



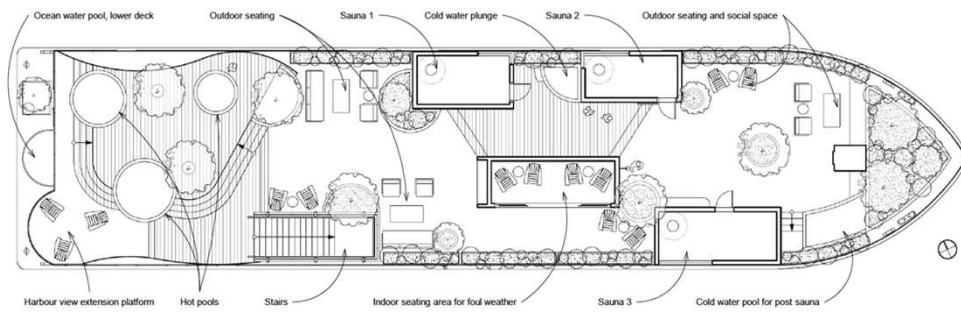
4. Gothenburg, Sweden

20

Facility Design

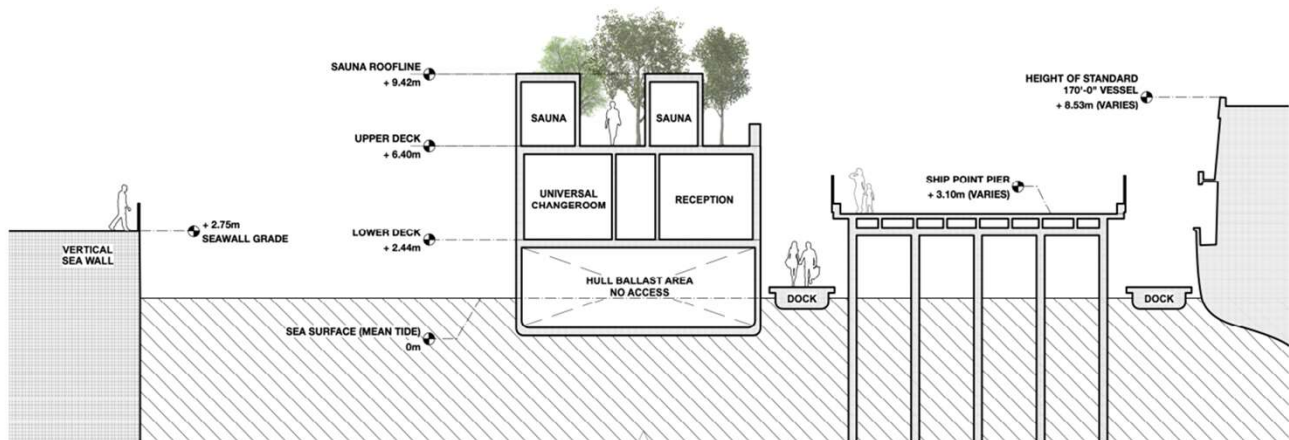
The space has been designed to be used year-round with facilities that include;

- 4 saunas
- 2 hot pools
- 2 freshwater cold pools
- Outdoor and indoor spaces to relax and socialize
- Flex spaces for special event programming such as music and speaker series



21

Facility Design



22