

# Medical Health Officer Introduction to Victoria Council

3 August 2023  
Mike Benusic, Medical Health Officer

islandhealth.ca



1

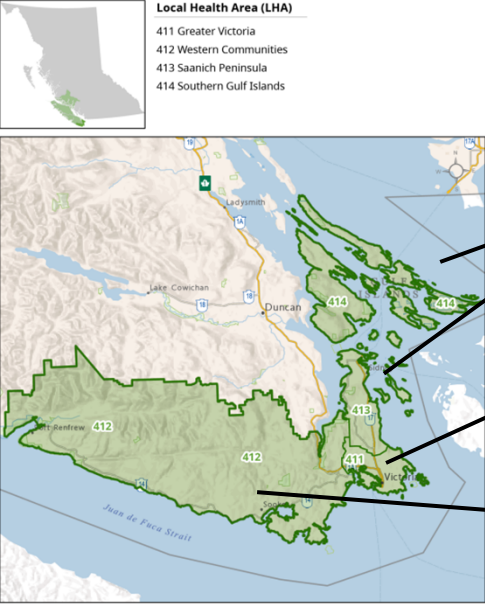
## Outline

- Role of the Medical Health Officer
- Key population health updates
- Working together

2


2

**Health Service Delivery Area (HSDA)**  
**41 South Vancouver Island**




**Local Health Area (LHA)**  
411 Greater Victoria  
412 Western Communities  
413 Saanich Peninsula  
414 Southern Gulf Islands


**Chief MHO: Dr. Reka Gustafson**




**Dr. Dee Hoyano**



**Dr. Mike Benusic**



**Dr. Murray Fyfe**



3

## Role of the Medical Health Officer (MHO)

**Public Health Act**


Section 73(3): A medical health officer must advise, in an independent manner, authorities and local governments within the designated area

- (a) on public health issues, including health promotion and health protection,
- (b) on bylaws, policies and practices respecting those issues, and
- (c) on any matter arising from the exercise of the medical health officer's powers or performance of his or her duties under this or any other enactment.


Section 83: A local government must do all of the following:

- (a) if the local government becomes aware of a health hazard or health impediment within its jurisdiction, take an action required by a regulation made under section 120 (1) (a) [regulations respecting local governments], or, if no regulation applies, either
  - (i) report the health hazard or health impediment to a health officer, or
  - (ii) take an action the local government has authority to take under this or another enactment to respond to the health hazard or health impediment;
- (b) provide health officers with information the health officers require to exercise their powers and perform their duties under this Act;
- (c) consider advice or other information provided to the local government by a health officer.

[bclaws.gov.bc.ca](http://bclaws.gov.bc.ca)

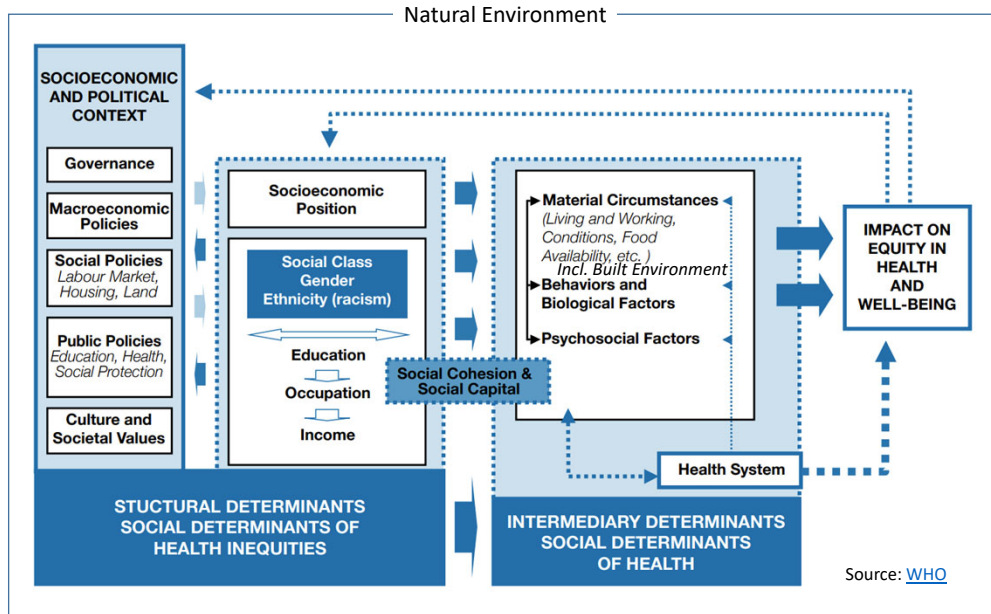


- Population & Public Health Assessment
- Communicable Disease Control & Prevention
- Community Care Facilities Licensing
- Environmental Public Health
- Healthy Communities
- Tobacco & Vapour Prevention & Control
- Vaccination
- Substance Use & Harm Reduction
- Health Units: vaccination, perinatal, sexual health, speech, audiology, dental



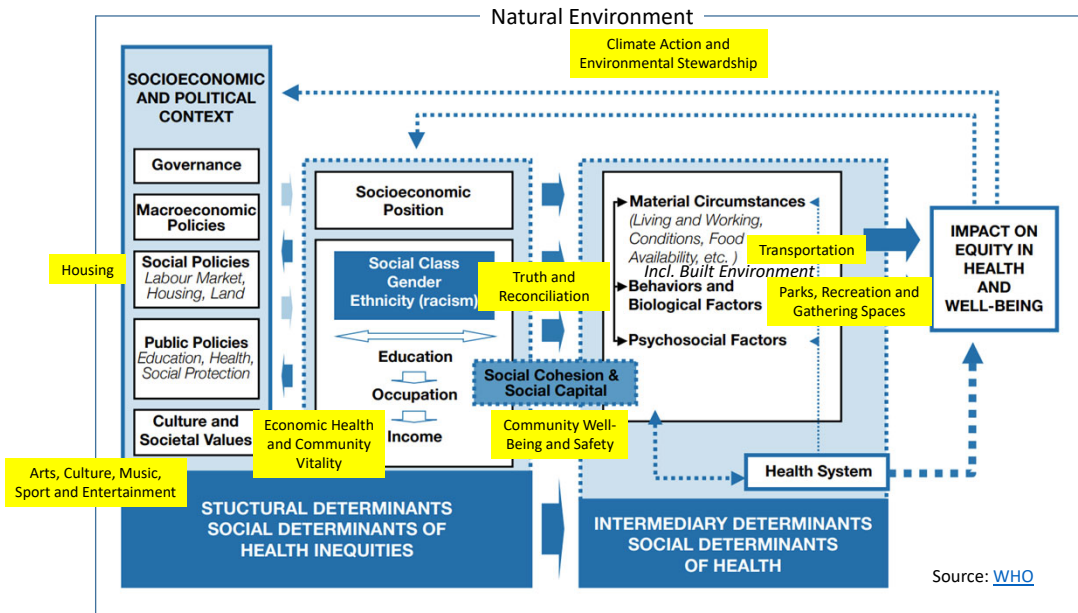
4

# What makes people healthy?



5

# What makes people healthy?



6

# Data sources

New: June 6, 2023 Updated CHSA Health Profiles and Database Search

**BC Community Health Data**

Return to the BCCDC site

Municipality Health Profiles
CHSA Health Profiles
Health Atlas
Database Search
About
Contact

Home About

## About

This site was developed and is maintained by the Population and Public Health Surveillance (part of Data & Analytic Services) at the BC Centre for Disease Control (BCCDC), a program of the Provincial Health Services Authority, in partnership with regional health authorities and the Ministry of Health in BC.

[communityhealth.phsa.ca](https://communityhealth.phsa.ca)

NEWS EVENTS COMPLIMENTS & COMPLAINTS HEALTH ALERTS CONTACT US [Search Entire Site](#)

Learn About Health For Patients & Visitors Our Services Our Locations Your Region

About Us Medical Health Officers Local Health Area Profiles
Population Health Statistics & Publications
Search About Us

**ABOUT US**

- Accountability
- Foundations
- Media Relations
- Medical Health Officers
- Food Security
- MHO Newsletters
- Population Health Statistics & Publications
- Local Health Area Profiles
- Safe Disposal of Needs

## Local Health Area Profiles

**Local Health Area Profiles**

The Island Health region is divided into 14 local health areas (LHA) – geographic areas defined by the Ministry of Health. Each LHA profile provides information about that area's population, health status and how often health services are used. Please read Interpretation Guide to understand the information presented in each profile, for details on the indicators and links to publicly accessible data sources and information on scope and usage.

For questions, past profiles or if you notice a discrepancy, please contact Maritja Gully at [Maritja.Gully@islandhealth.ca](mailto:Maritja.Gully@islandhealth.ca).

## B.C. SPEAK Survey



[bccdc.ca](https://bccdc.ca)

**Local Health Area Profiles**

**Local Health Area Profiles**

The Island Health region is divided into 14 local health areas (LHA) – geographic areas defined by the Ministry of Health. Each LHA profile provides information about that area's population, health status and how often health services are used. Please read Interpretation Guide to understand the information presented in each profile, for details on the indicators and links to publicly accessible data sources and information on scope and usage.

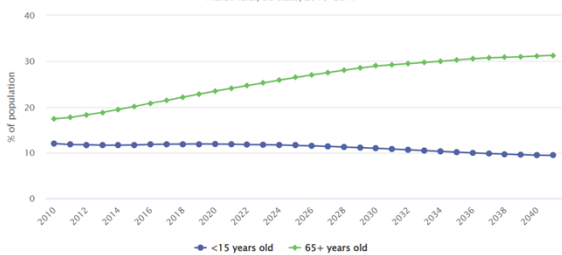
For questions, past profiles or if you notice a discrepancy, please contact Maritja Gully at [Maritja.Gully@islandhealth.ca](mailto:Maritja.Gully@islandhealth.ca).

[islandhealth.ca](https://islandhealth.ca)

7

### Current and projected youth and seniors populations for Greater Victoria LHA

P.E.O.P.L.E., BC Stats, 2010-2041



#### Downtown Victoria/Vic West

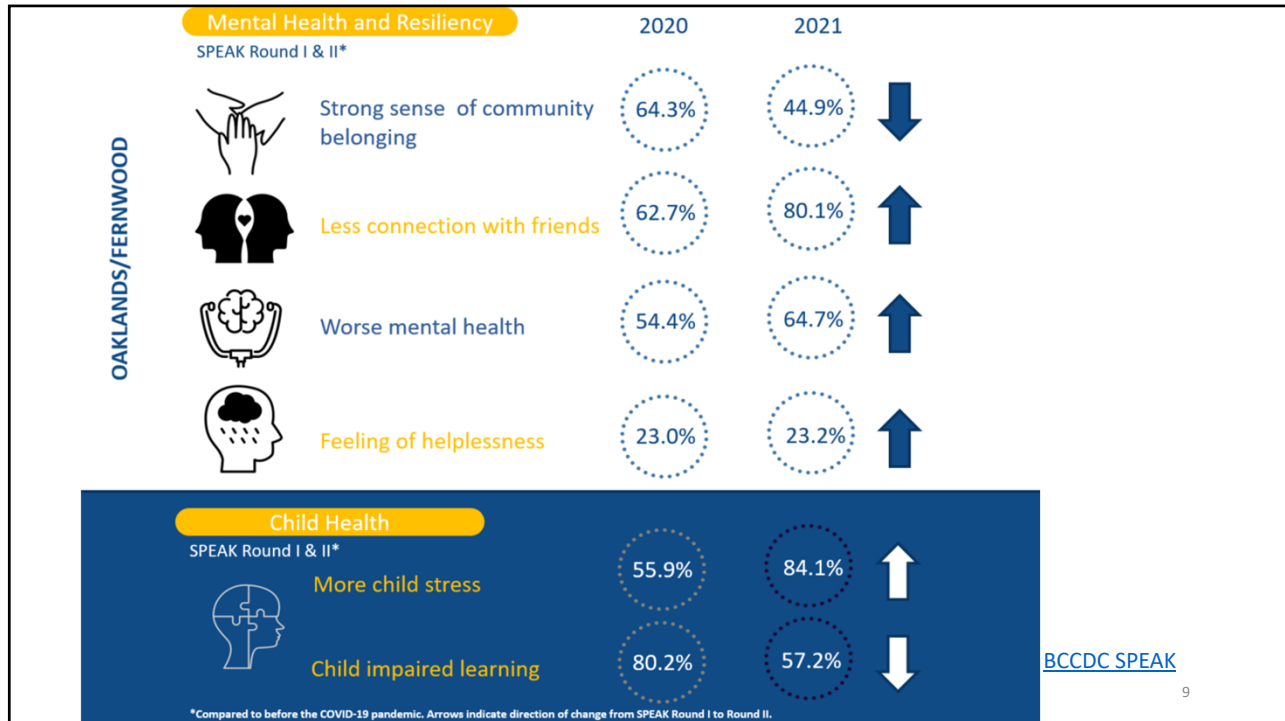
[communityhealth.phsa.ca](https://communityhealth.phsa.ca)

Indicator, age (year)	Indicator Value, %			Percent Difference of CHSA Value	
	CHSA	HA	BC	Compared to HA	Compared to BC
Attached to GP or group practice, 0+	66.3	77.5	76.8	-14.5%	-13.7%
Community belonging - strong, 18+	40.9	48.0	46.1	-14.8%	-11.3%
General health - good, 18+	90.5	88.9	89.4	+1.8%	+1.2%
Physically active, 18+	67.9	72.4	69.1	-6.2%	-1.7%
Feeling lonely - always, 18+	14.2	11.3	12.1	+25.7%	+17.4%
Mental health - poor, 18+	35.7	31.1	32.1	+14.8%	+11.2%
Smoke/vape daily/occasionally, 18+	16.8	14.3	13.7	+17.5%	+22.6%
Binge drink, 18+	30.2	27.8	27.1	+8.6%	+11.4%
Small for Gestational Age, 0	6.6	4.9	6.6	+34.7%	0.0%
Preterm Births, 0	10.9	11.5	11.4	-5.2%	-4.4%
Low birth weight singletons, 0	6.0	4.2	4.7	+42.9%	+27.7%
Cesarean Deliveries, 0+	33.5	32.3	37.4	+3.7%	-10.4%

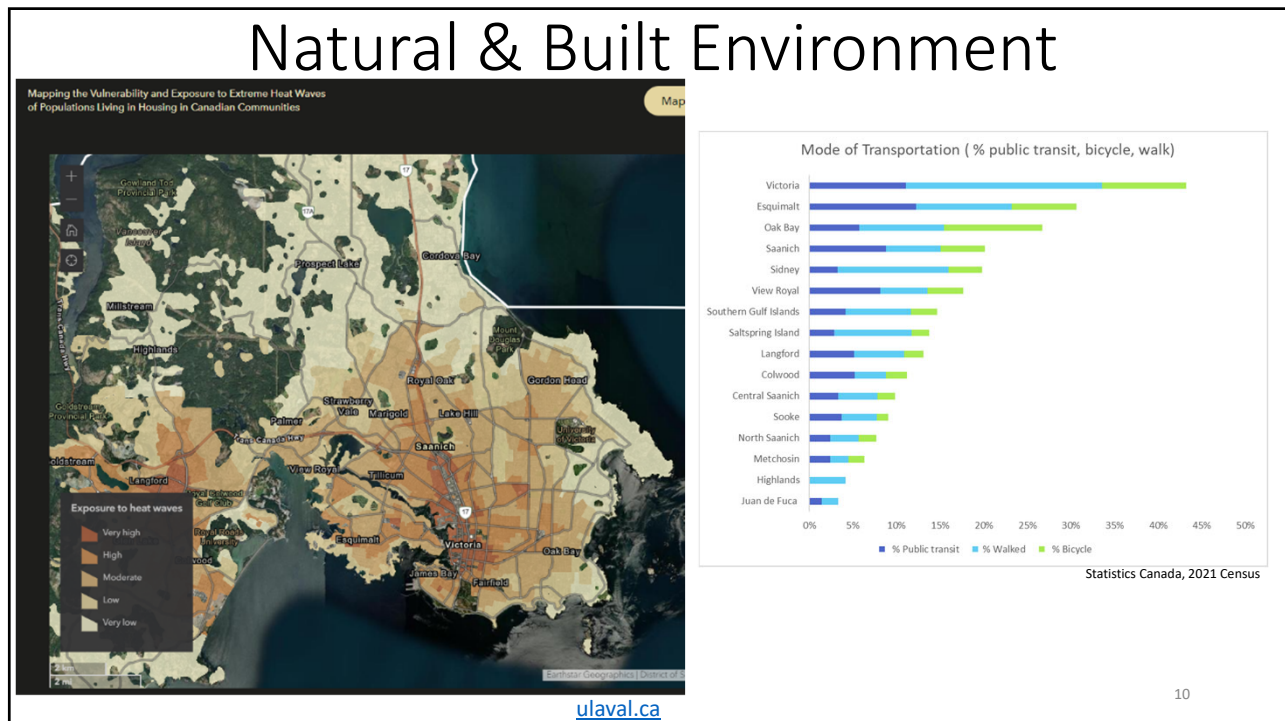
#### James Bay/Fairfield

Indicator, age (year)	Indicator Value, %			Percent Difference of CHSA Value	
	CHSA	HA	BC	Compared to HA	Compared to BC
Attached to GP or group practice, 0+	74.5	77.5	76.8	-3.8%	-2.9%
Community belonging - strong, 18+	49.7	48.0	46.1	+3.5%	+7.8%
General health - good, 18+	91.0	88.9	89.4	+2.4%	+1.8%
Physically active, 18+	72.5	72.4	69.1	+0.1%	+4.9%
Feeling lonely - always, 18+	10.3	11.3	12.1	-8.8%	-14.9%
Mental health - poor, 18+	31.6	31.1	32.1	+1.6%	-1.6%
Smoke/vape daily/occasionally, 18+	12.2	14.3	13.7	-14.7%	-10.9%
Binge drink, 18+	28.0	27.8	27.1	+0.7%	+3.3%
Small for Gestational Age, 0	4.8	4.9	6.6	-2.0%	-27.3%
Preterm Births, 0	8.9	11.5	11.4	-22.6%	-21.9%
Low birth weight singletons, 0	2.8	4.2	4.7	-33.3%	-40.4%
Cesarean Deliveries, 0+	29.0	32.3	37.4	-10.2%	-22.5%

8



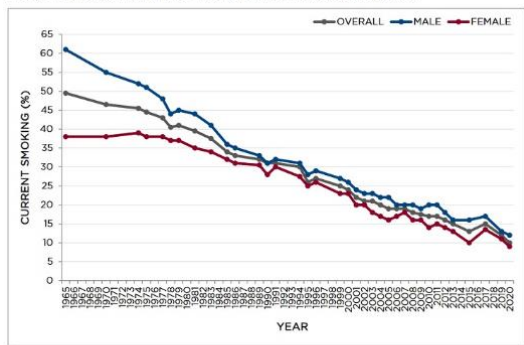
9



10

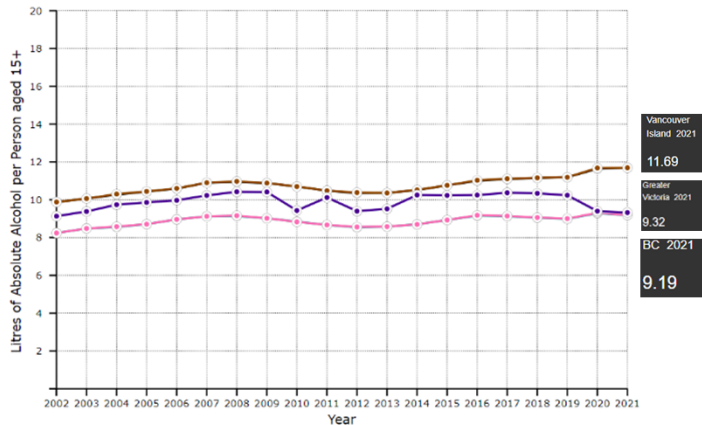
# Legal Substance Use

FIGURE 11: SMOKING PREVALENCE\* IN CANADA, ADULTS AGED 15+, 1965-2020



\*INCLUDES DAILY AND NON-DAILY SMOKERS  
 DATA SOURCES: 1965-1986: A CRITICAL REVIEW OF CANADIAN SURVEY DATA ON TOBACCO USE, ATTITUDES AND KNOWLEDGE (HEALTH AND WELFARE CANADA, 1987); 1989-1999: SMOKING BEHAVIOUR OF CANADIANS: A NATIONAL ALCOHOL AND OTHER DRUGS SURVEY REPORT, 1999 (HEALTH AND WELFARE CANADA, 1999); 2000: CANADA'S HEALTH PROMOTION SURVEY 1999: TECHNICAL REPORT (HEALTH AND WELFARE CANADA, 2001); 2001: HEALTH STATUS OF CANADIANS: REPORT OF THE 1999 GENERAL SOCIAL SURVEY (STATISTICS CANADA, 2001); NATIONAL ALCOHOL AND OTHER DRUGS SURVEY REPORT, 1999 (HEALTH AND WELFARE CANADA, 1999); 2005: NATIONAL POPULATION HEALTH SURVEY (STATISTICS CANADA, 2006); 2009: NATIONAL POPULATION HEALTH SURVEY (STATISTICS CANADA, 2010); 2013: NATIONAL POPULATION HEALTH SURVEY (STATISTICS CANADA, 2014); 2018: NATIONAL POPULATION HEALTH SURVEY (STATISTICS CANADA, 2019); 2020: CANADIAN TOBACCO USE: MONITORING SURVEY (HEALTH CANADA, 2021); 2018-2020: CANADIAN TOBACCO, ALCOHOL AND DRUGS SURVEY (HEALTH CANADA, 2021); 2018-2020: CANADIAN TOBACCO AND NICOTINE SURVEY (HEALTH CANADA, 2021)

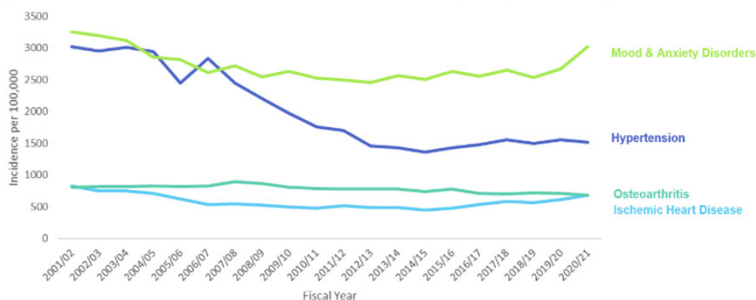
Annual Per Capita Alcohol Consumption vs years (2002-2021)



11

# Health Outcomes: Chronic Disease & Mental Health

Age-standardized incidence rate\*, Greater Victoria LHA, 2001/02 to 2020/21



Source: Chronic Disease Registry Dashboard, BCCDC Observatory, 2020/21

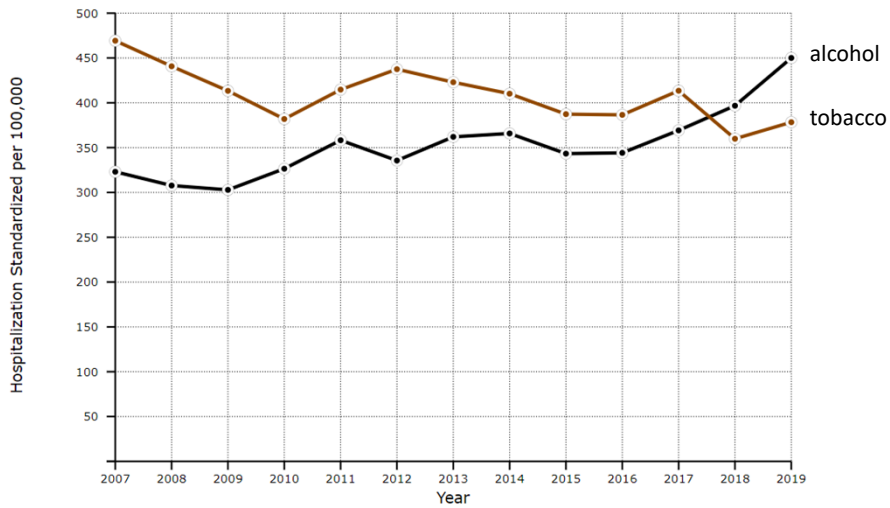
Chronic disease (age-standardized prevalence rate) (per cent, 2019)	LHA	BC	
Asthma	12.1	12.1	0.5%
COPD	5.1	6.2	16.8%
Diabetes	6.9	8.0	14.7%
Heart failure	1.6	2.0	19.1%
High blood pressure	20.7	22.8	9.3%

[communityhealth.phsa.ca](http://communityhealth.phsa.ca)

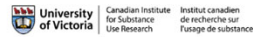
12

12

## Health Outcomes: Hospitalizations due to legal substances



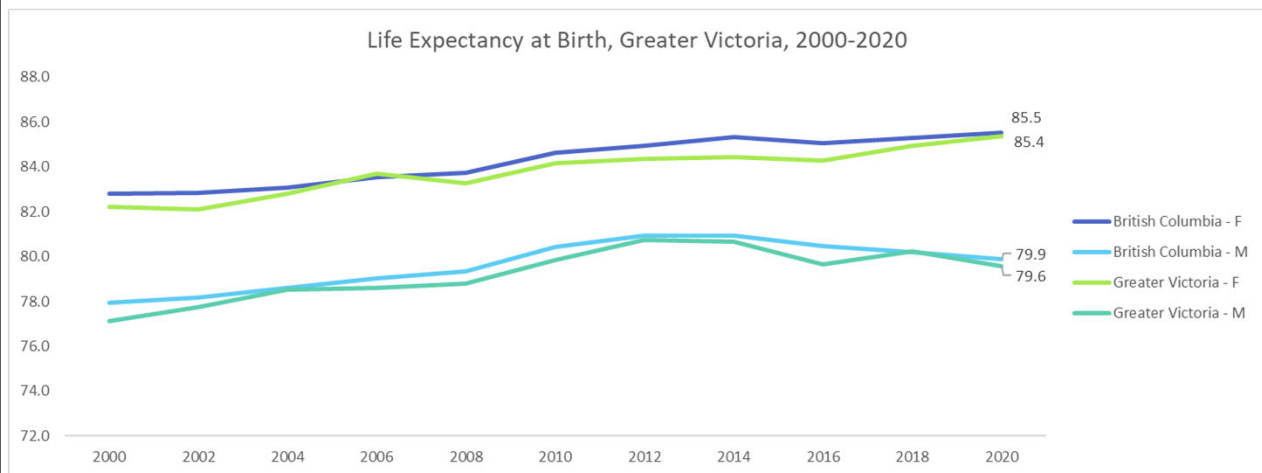
Source: Canadian Institute of Substance Use Research, University of Victoria.  
 Note: The figures contained in the graphs and tables are derived using record-level data, estimates and imputed data.



13

13

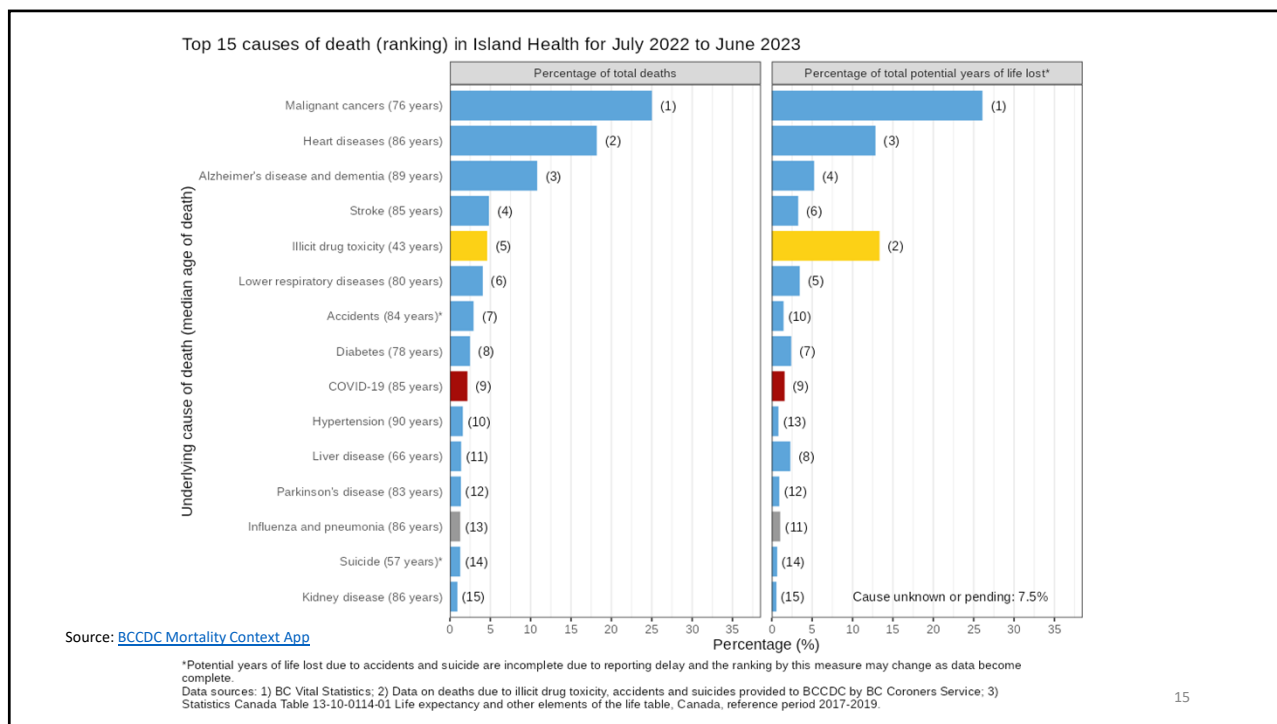
## Health Outcomes: Life Expectancy



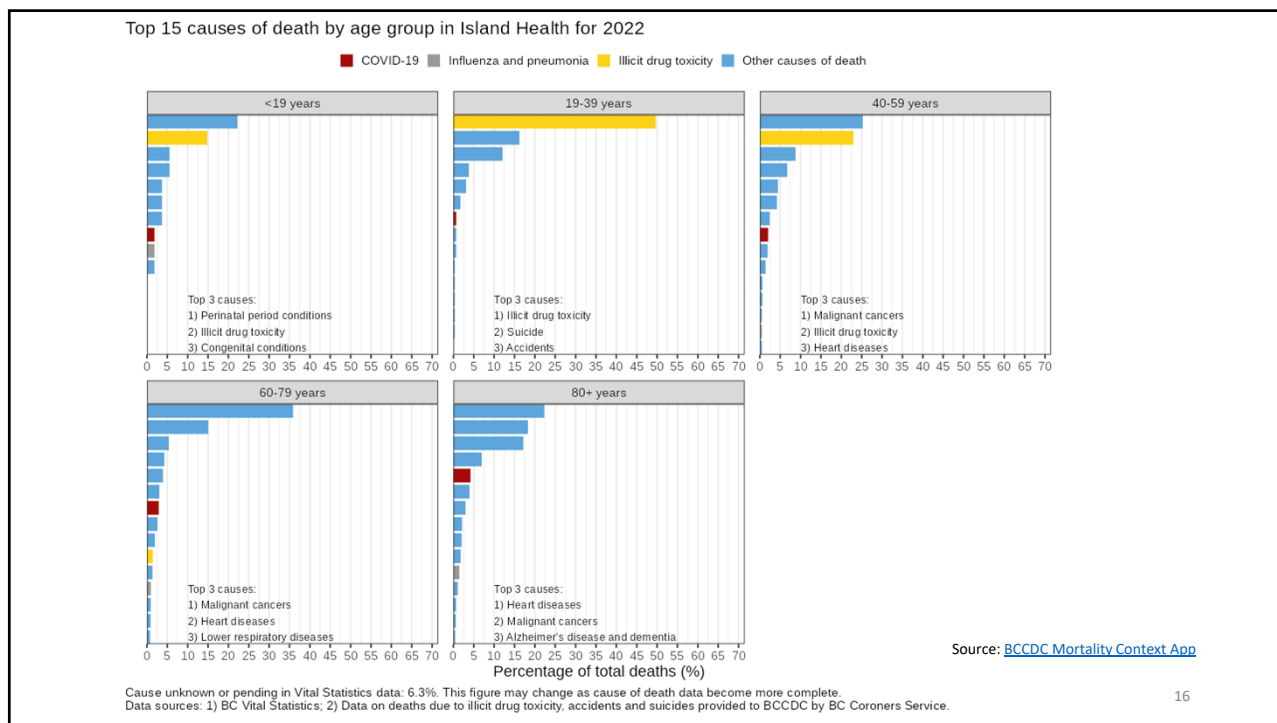
Source: Vital Statistics, Population Health Surveillance and Epidemiology, Office of the Provincial Health Officer

14

14

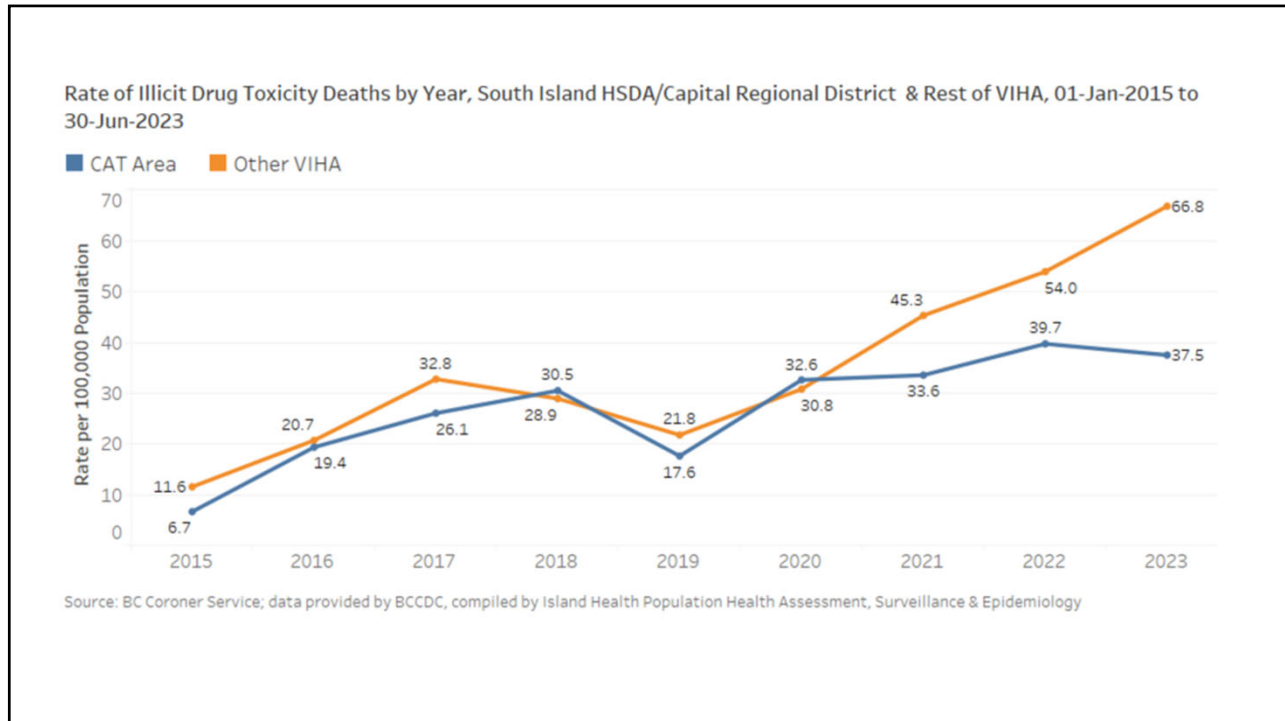


15

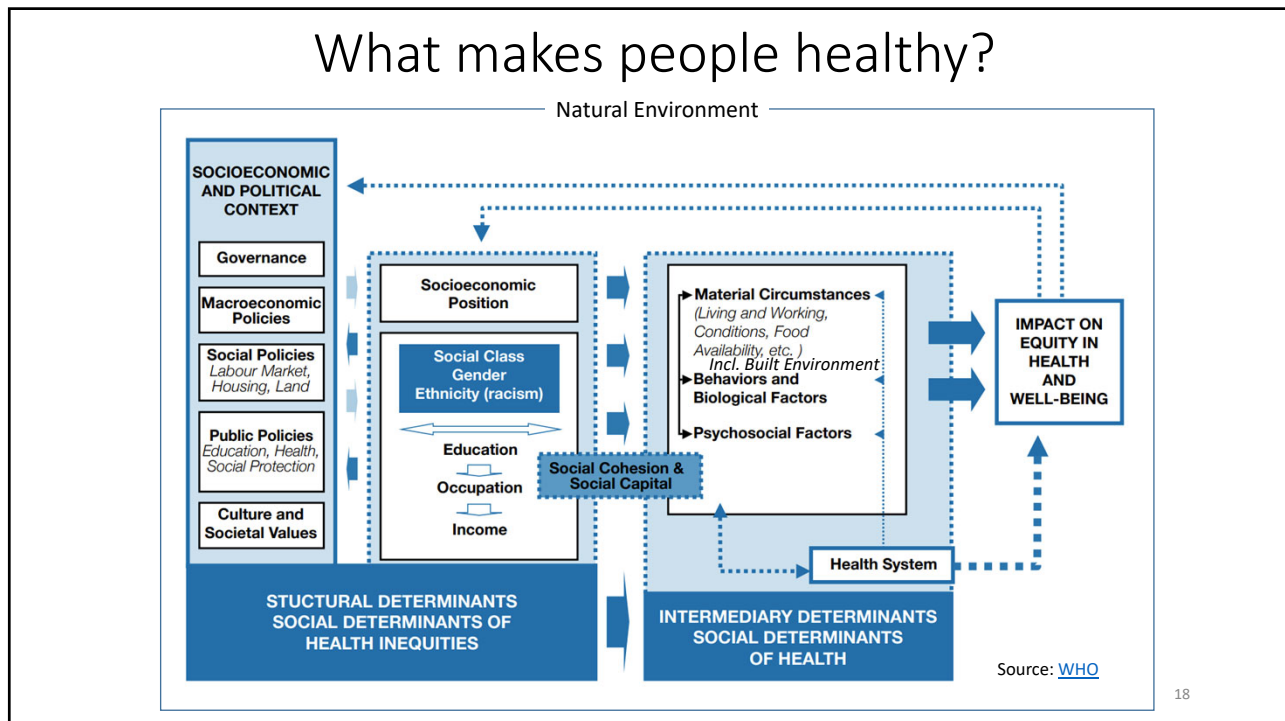


16





17



18

Mike Benusic MD MPH CCFP FRCPC  
Medical Health Officer, South Vancouver Island  
[michael.benusic@islandhealth.ca](mailto:michael.benusic@islandhealth.ca) 250-519-3406

