



1

Presentation Overview

- Site History and Conditions Overview
- The Draft Master Plan
 - Process overview
 - Schematic Design – key elements
 - Phasing, implementation and cost estimates
- Recommended Next Steps



2 SHIP POINT | SEPTEMBER 14, 2023



2

Site History

- Traditional use as a gathering place; water access, canoe races
- Industrial uses (concrete plant) from early 1900's through to 1974
- Divested to the City from the Provincial Government (Provincial Capital Commission) in 2014



3 SHIP POINT | SEPTEMBER 14, 2023



3

Current Use

- Parking
- Events, markets and festivals
- Access and servicing to Harbour Air Terminal & Flying Otter
- Access for GVHA Marina and maintenance
- Harbour Pathway Connection
- Access, servicing and delivery for visitor info building and restaurant
- Floating Spa - servicing and access



4 SHIP POINT | SEPTEMBER 14, 2023

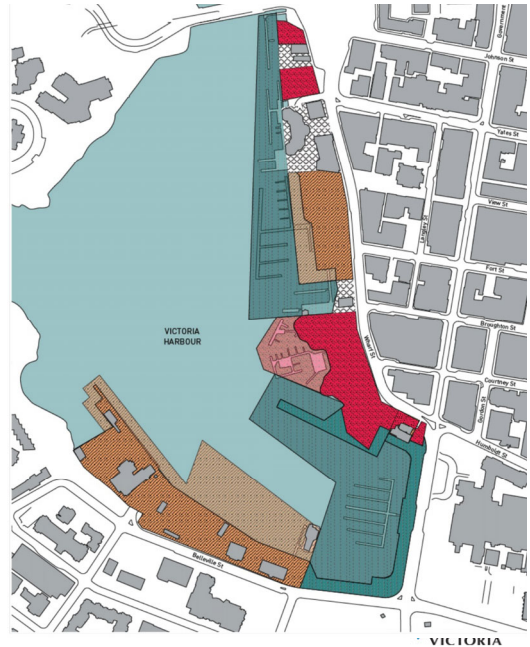


4

Site Ownership and Context



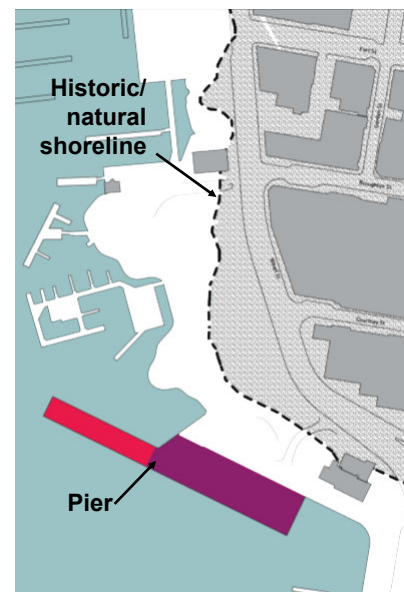
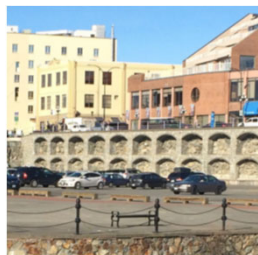
5 SHIP POINT | SEPTEMBER 14, 2023



5

Site Overview

- Historic shoreline runs through centre of site: bedrock to the east; unconsolidated fill to west
- Large retaining wall to east of site, with 8-9 m grade change up to Wharf Street
- Mortared rock seawall (1979) retains site to the west
- Pier in various degrees of age and composition

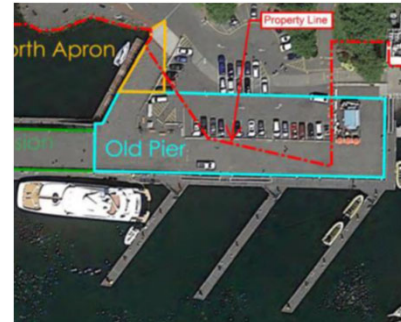


6 SHIP POINT | SEPTEMBER 14, 2023

6

Site Conditions

- Rock seawall is settling and cracking, impacting site stability and causing erosion of inland portions of the site
- Requires a combination of repair, replacement and structural stabilization of the shoreline and upland portions of the site
- Emergency repairs to Pier structure in 2018; additional piles and new concrete deck will be required in coming years



7 SHIP POINT | SEPTEMBER 14, 2023

7

The Master Plan Process

- Council directed staff to undertake Master Plan process in March 2017
- Occurred throughout three phases from March 2017 to June 2018
- Led by multi-disciplinary consultant team in close collaboration with staff
- Robust public and stakeholder engagement; inc. GVHA, Harbour Air, Marina users, Songhees and Esquimalt Nations



8 SHIP POINT | SEPTEMBER 14, 2023

8

Approved Concept Design

- Approved by Council in September 2017 with direction for refinement
- The basis for more detailed design, costing and phasing as part of Master Plan development

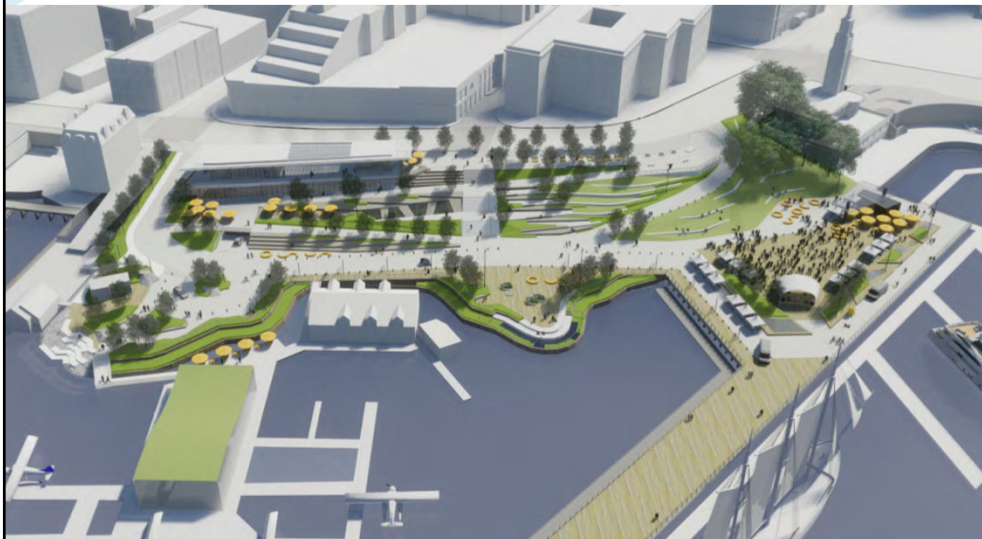


9 SHIP POINT | SEPTEMBER 14, 2023



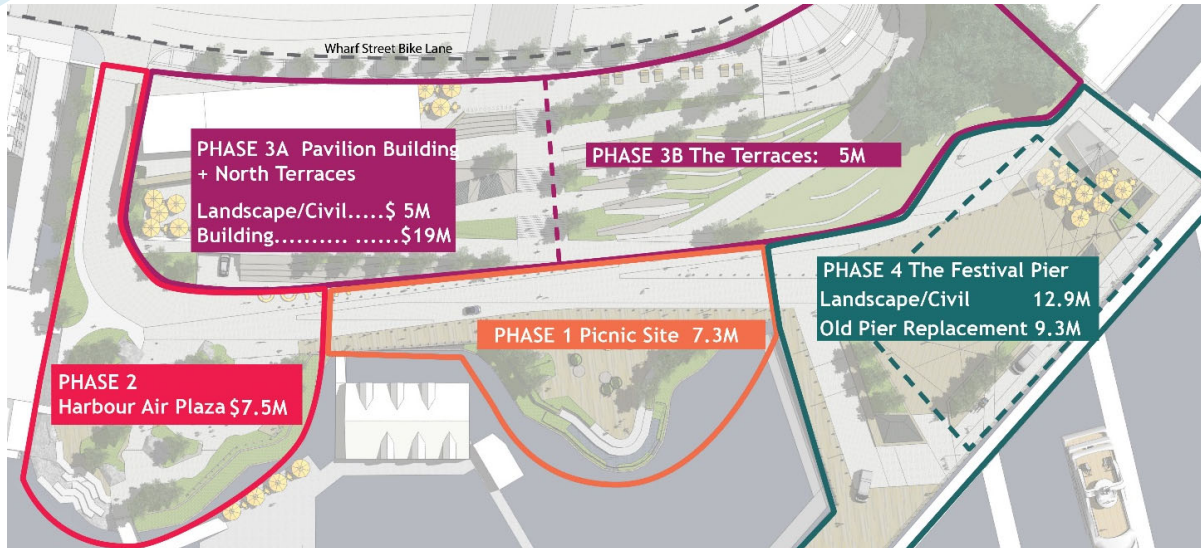
9

Ship Point - Draft Schematic Design



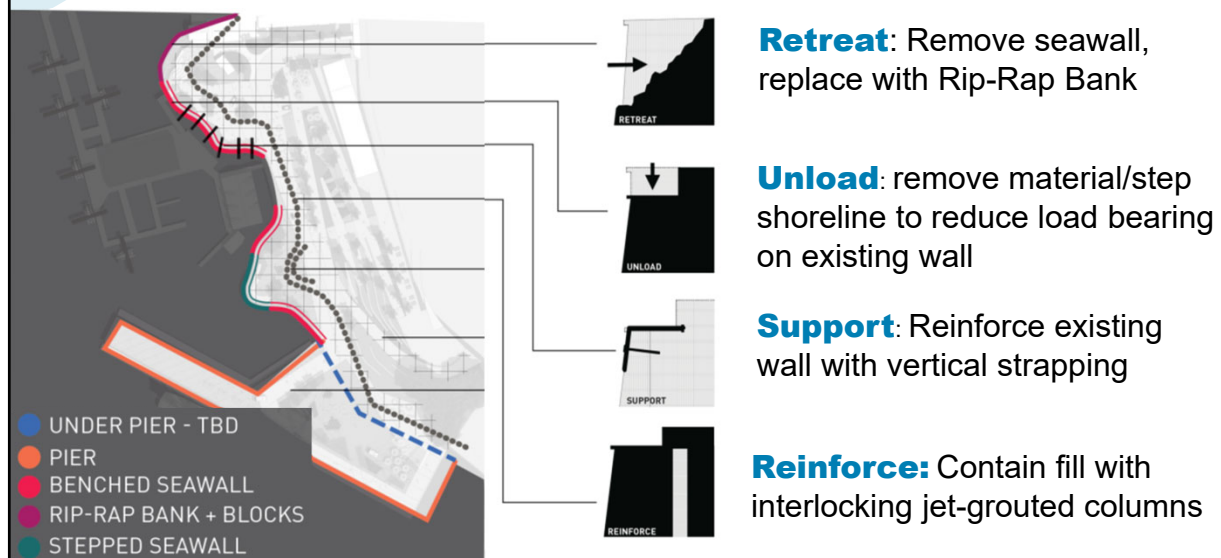
10

Preliminary Phasing and Costing



11

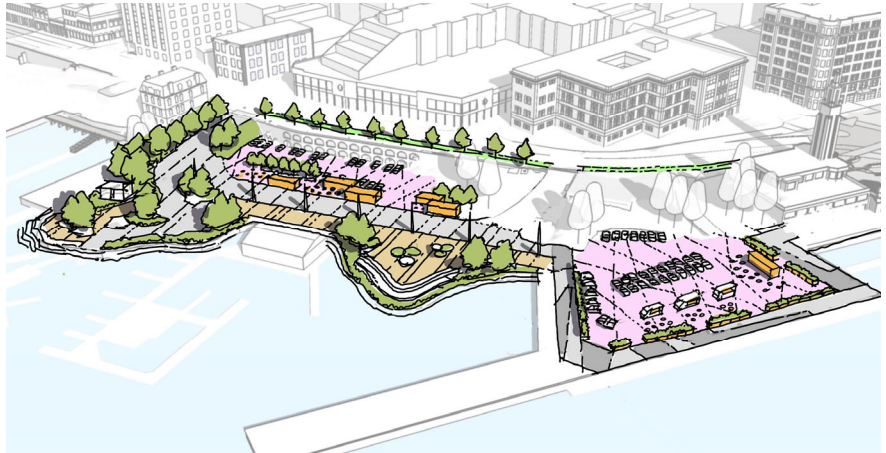
Shoreline and Structural Approaches



12

Recommended Initial Phases

- Shoreline and site stabilization
- Adjacent surface improvements including harbour pathway
- Interim, temporary improvements



13 SHIP POINT | SEPTEMBER 14, 2023



13

Recent Local Precedents



Harbour Pathway at The Pearl



Harbour Pathway Swift to Herald

14 SHIP POINT | SEPTEMBER 14, 2023



14

Temporary, Interim Improvements

- Building on OUR DWTN placemaking pop-up
- Opportunity to expand area, quality of design improvements and programming
- Opportunity to pilot the future long-term vision

15 SHIP POINT | SEPTEMBER 14, 2023

Ship Point Pop-up 2023



Concord Pop-up Park (Van)



15

Recommendation

That Council Direct staff to:

- Report back with a revised design concept for seawall and site remediation and landscape improvements prior to proceeding with detailed design and costing, and
- Explore other potential funding opportunities.

16 SHIP POINT | SEPTEMBER 14, 2023



16