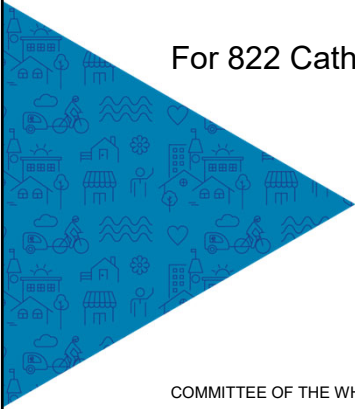


2023

CITY OF VICTORIA | Sustainable Planning & Community Development

# Development Permit with Variances Application

For 822 Catherine Street



COMMITTEE OF THE WHOLE | OCTOBER 12, 2023



## Aerial Photo





3



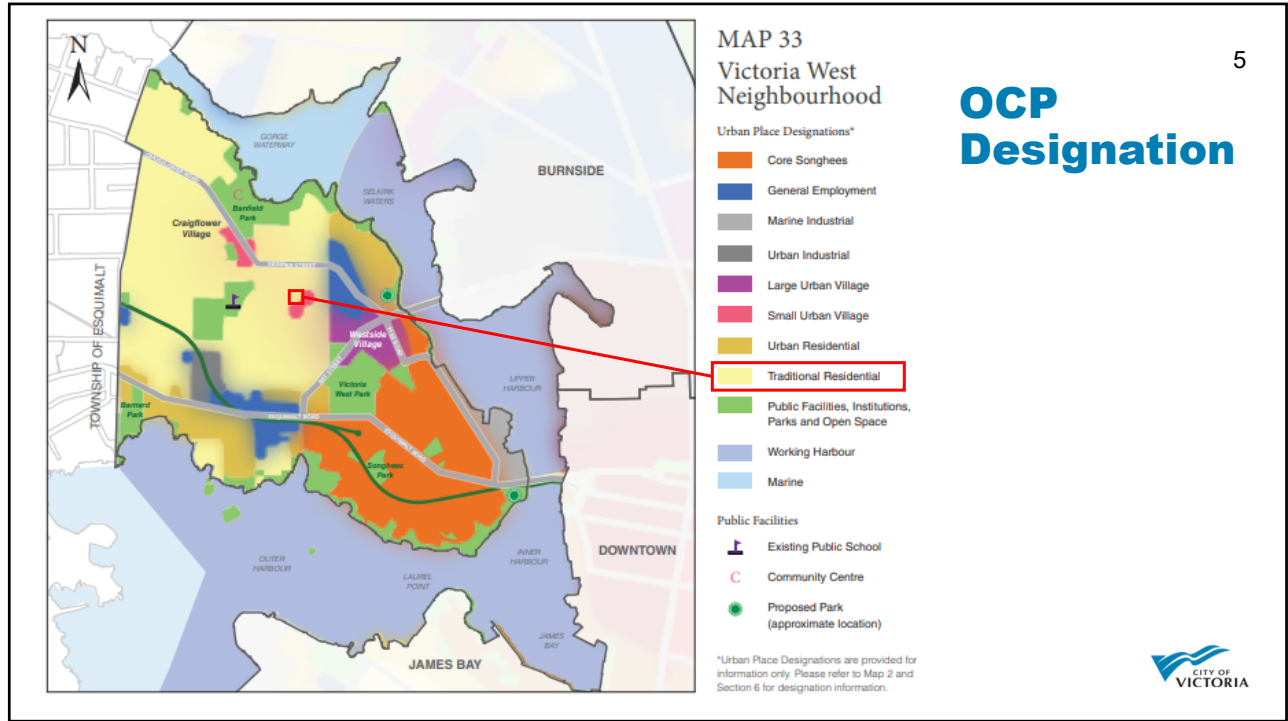
3



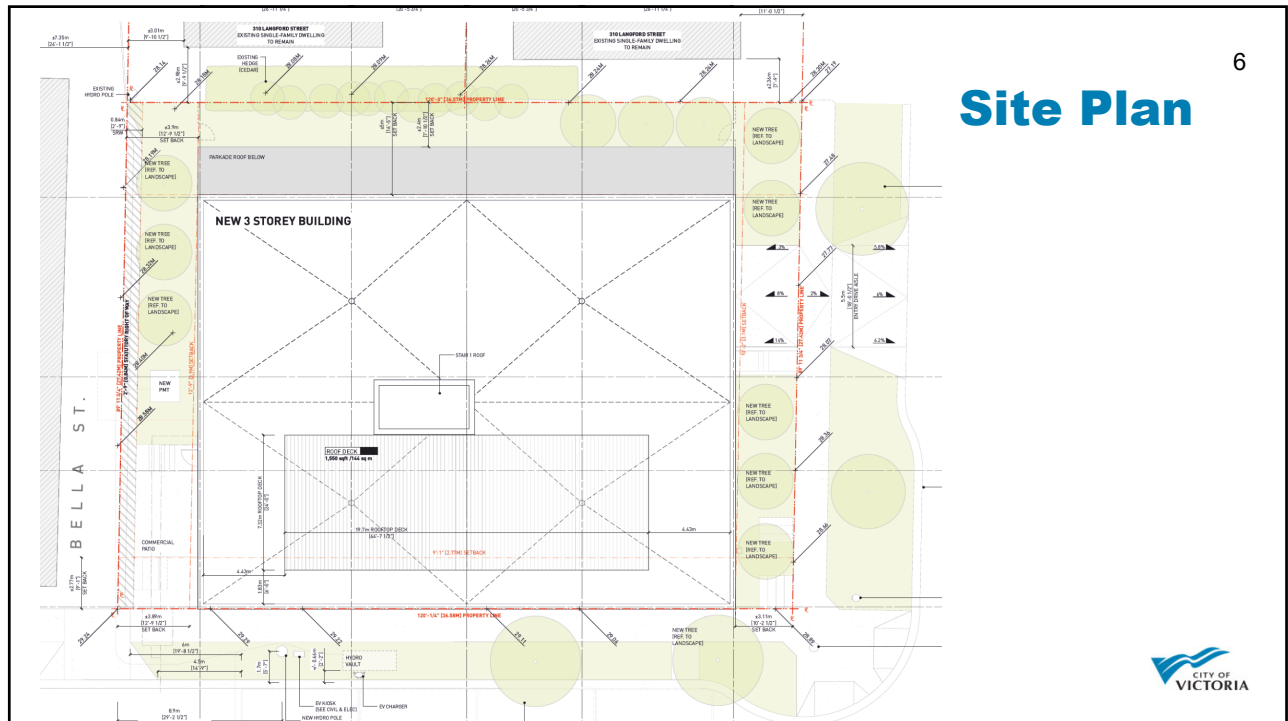
4



4



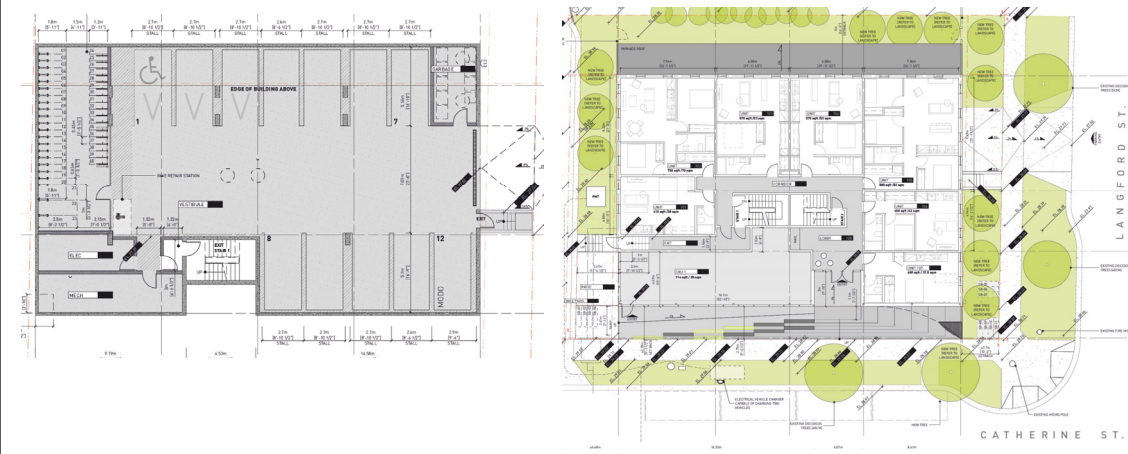
5



6

7

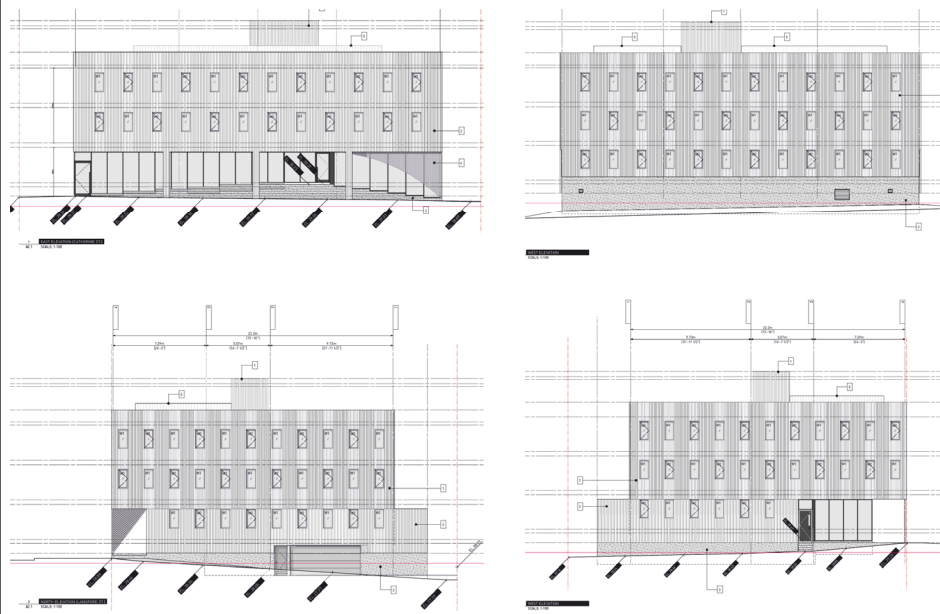
# Floor Plan



7

8

# Elevations

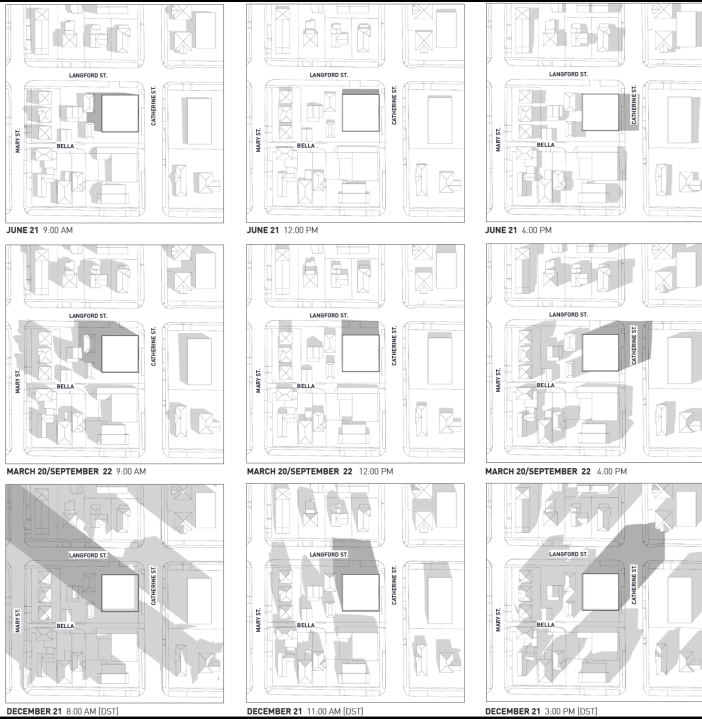


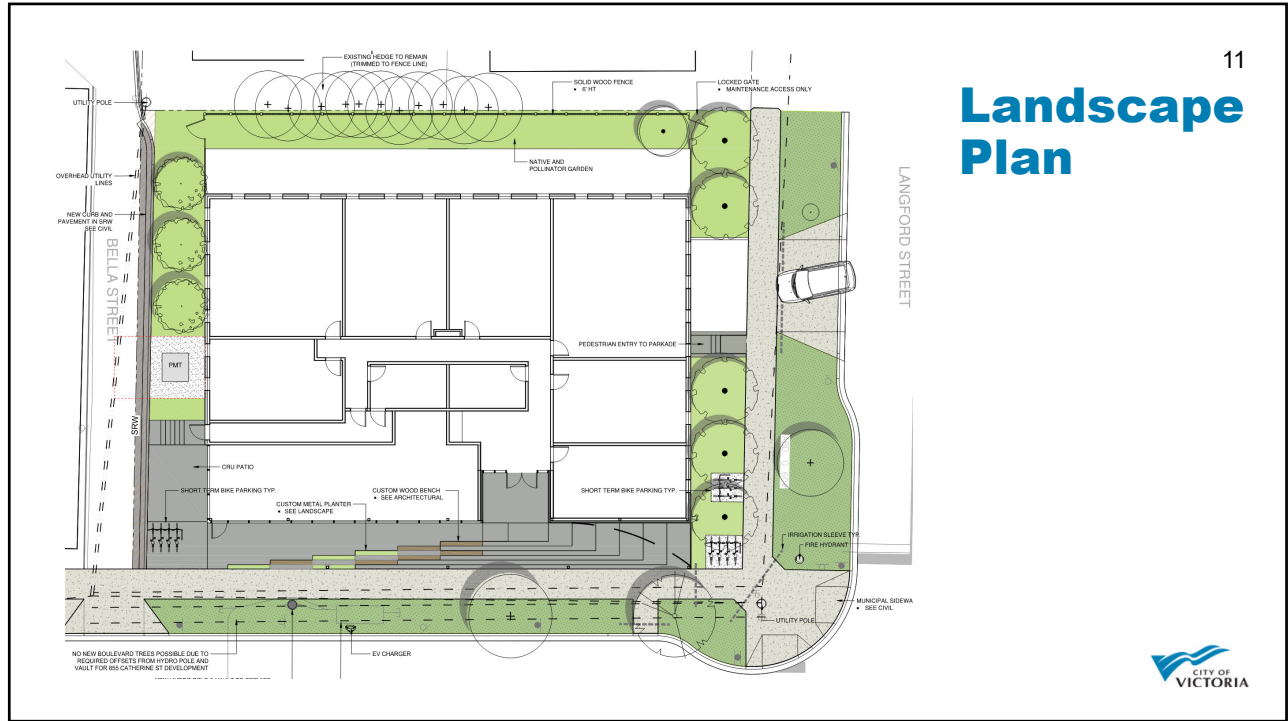
8

# Street Context



# Shadow Study





11



12

13

# Renderings

VIEW OF CRU FROM CATHERINE STREET SIDEWALK

VIEW FROM BELLA STREET

VIEW FROM LANGFORD STREET @ HARRY STREET

VIEW FROM CATHERINE STREET



13

14

# Comparisons

Previous Proposal

Current Proposal



14

# Comparisons



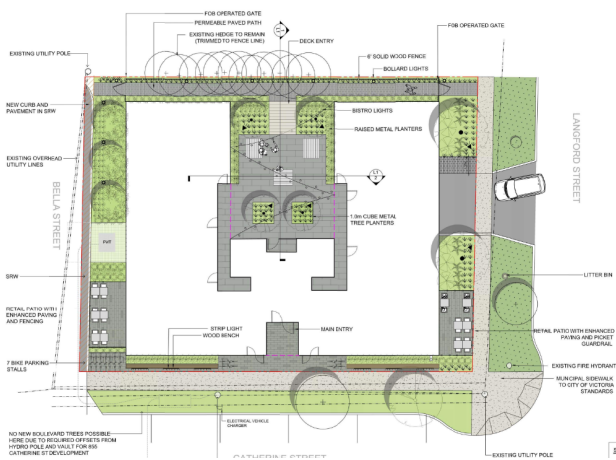
Previous Proposal



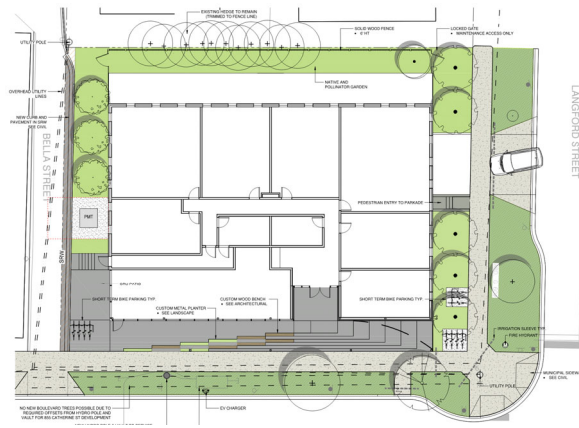
Current Proposal



# Comparisons



Previous Proposal

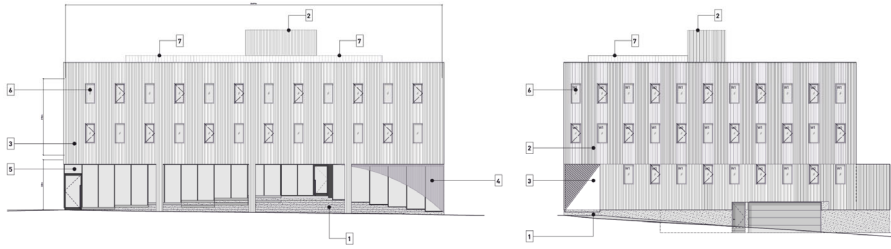


Current Proposal





# Material Board



1. CONCRETE



2. CORRUGATED METAL CLADDING (WHITE)



3. CUSTOM CURVED METAL CLADDING (WHITE)



4. WOOD ENTRY SOFFIT / FEATURE WALL



5. STOREFRONT GLASS



6. BLACK PVC WINDOW



7. METAL PICKET GUARDRAIL (WHITE)

