

A BYLAW OF THE CITY OF VICTORIA

The purposes of this Bylaw are to amend the Zoning Regulation Bylaw by creating the R1-S33 Zone, Restricted Small Lot With Secondary Suite (Walker Street) District, and to rezone land known as 970 Walker Street from the R1-S2 Zone, Restricted Small Lot (Two Storey) District to the R1-S33 Zone, Restricted Small Lot With Secondary Suite (Walker Street) District.

The Council of The Corporation of the City of Victoria in an open meeting assembled enacts the following provisions:

- 1 This Bylaw may be cited as the “ZONING REGULATION BYLAW, AMENDMENT BYLAW (NO. 1316)”.
- 2 Bylaw No. 80-159, the Zoning Regulation Bylaw, is amended in the Table of Contents of Schedule “B” under the caption PART 1 – Detached Dwelling Zones by adding the following words:

“1.157 R1-S33 Restricted Small Lot With Secondary Suite (Walker Street) District”
- 3 The Zoning Regulation Bylaw is also amended by adding to Schedule B after Part 1.156 the provisions contained in Schedule 1 of this Bylaw.
- 4 The land known as 970 Walker Street, legally described as PID: 030-635-365 Lot 3, Section 10, Esquimalt District, Plan EPP82688 and shown hatched on the attached map, is removed from the R1-S2 Zone, Restricted Small Lot (Two Storey) District, and placed in the R1-S33 Zone, Restricted Small Lot With Secondary Suite (Walker Street) District.

READ A FIRST TIME the **2nd** day of **November** 2023

READ A SECOND TIME the **2nd** day of **November** 2023

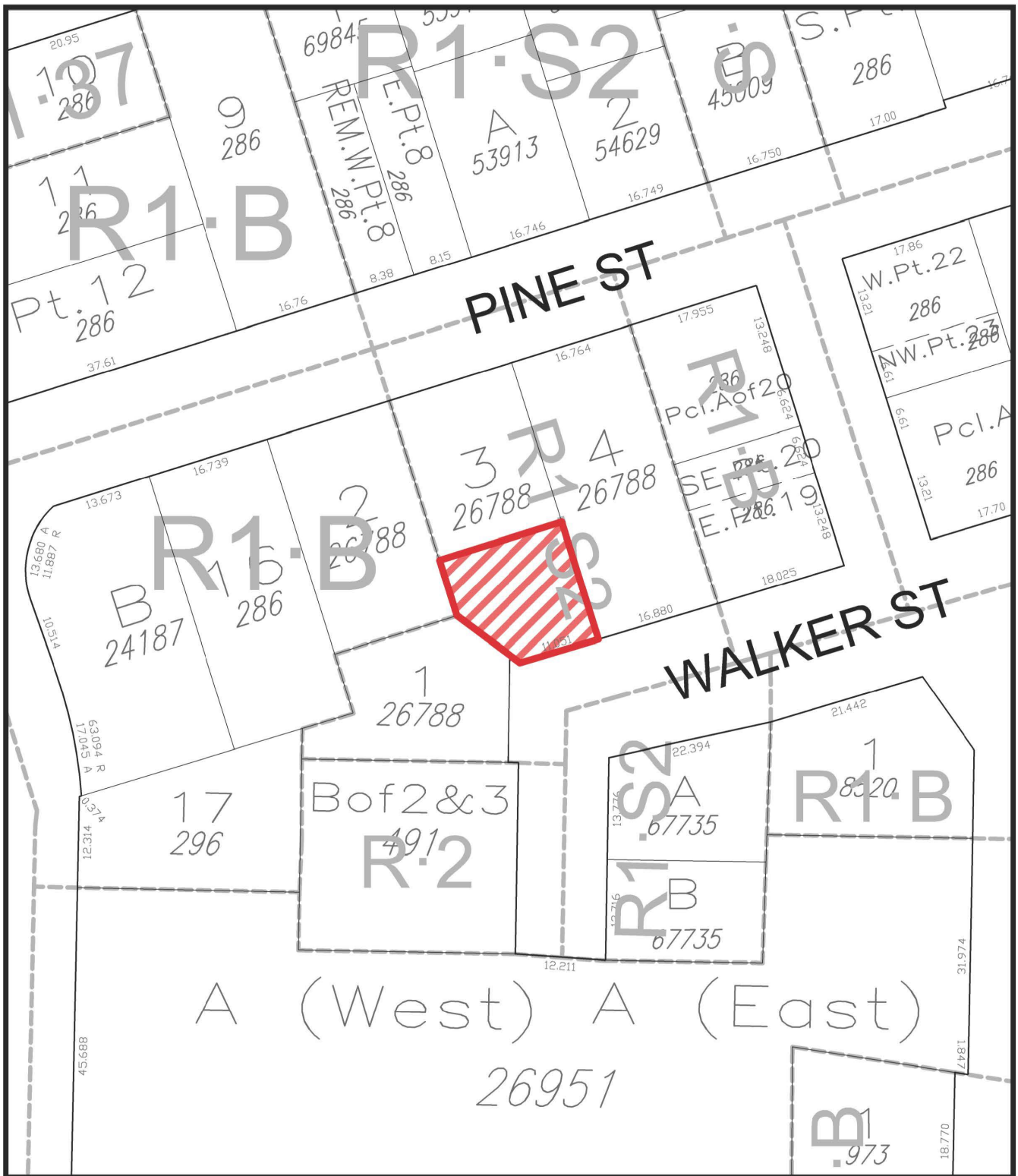
Public hearing held on the day of 2023

READ A THIRD TIME the day of 2023

ADOPTED on the day of 2023

CITY CLERK

MAYOR



970 Walker Street
Rezoning No.00826



PART 1.157 - R1-S33 ZONE, RESTRICTED SMALL LOT WITH SECONDARY SUITE (WALKER STREET) DISTRICT

1.157.1 Permitted Uses in this Zone

The following uses are the only uses permitted in this Zone:

- a. Uses permitted in the R1-S2 Zone, Restricted Small Lot (Two Storey) District, subject to the regulations in Part 1.23
- b. No more than one secondary suite.

1.157.2 General Regulations

Except as provided in this Part, the regulations applicable in Part 1.23, the R1-S2 Zone, Restricted Small Lot (Two Storey) District, apply in this zone.