

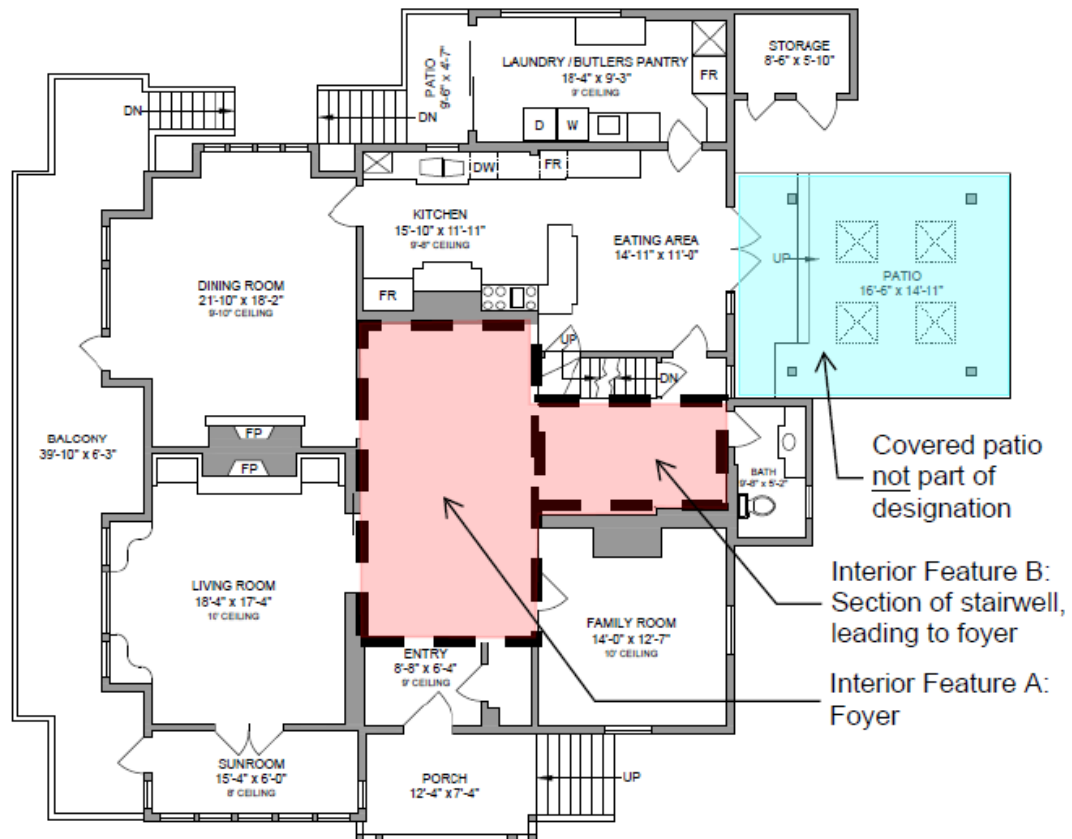


# Schedule A

## 1737 Rockland Heritage Designation - Schedule A: Protected Features

The well-preserved interior features, including the main entrance hall / foyer on the ground floor, with brick fireplace and carved fir mantle, adjacent wood built-in benches, fir wainscoting, stair finishes, ceiling beams, and oak flooring with decorative inlay.

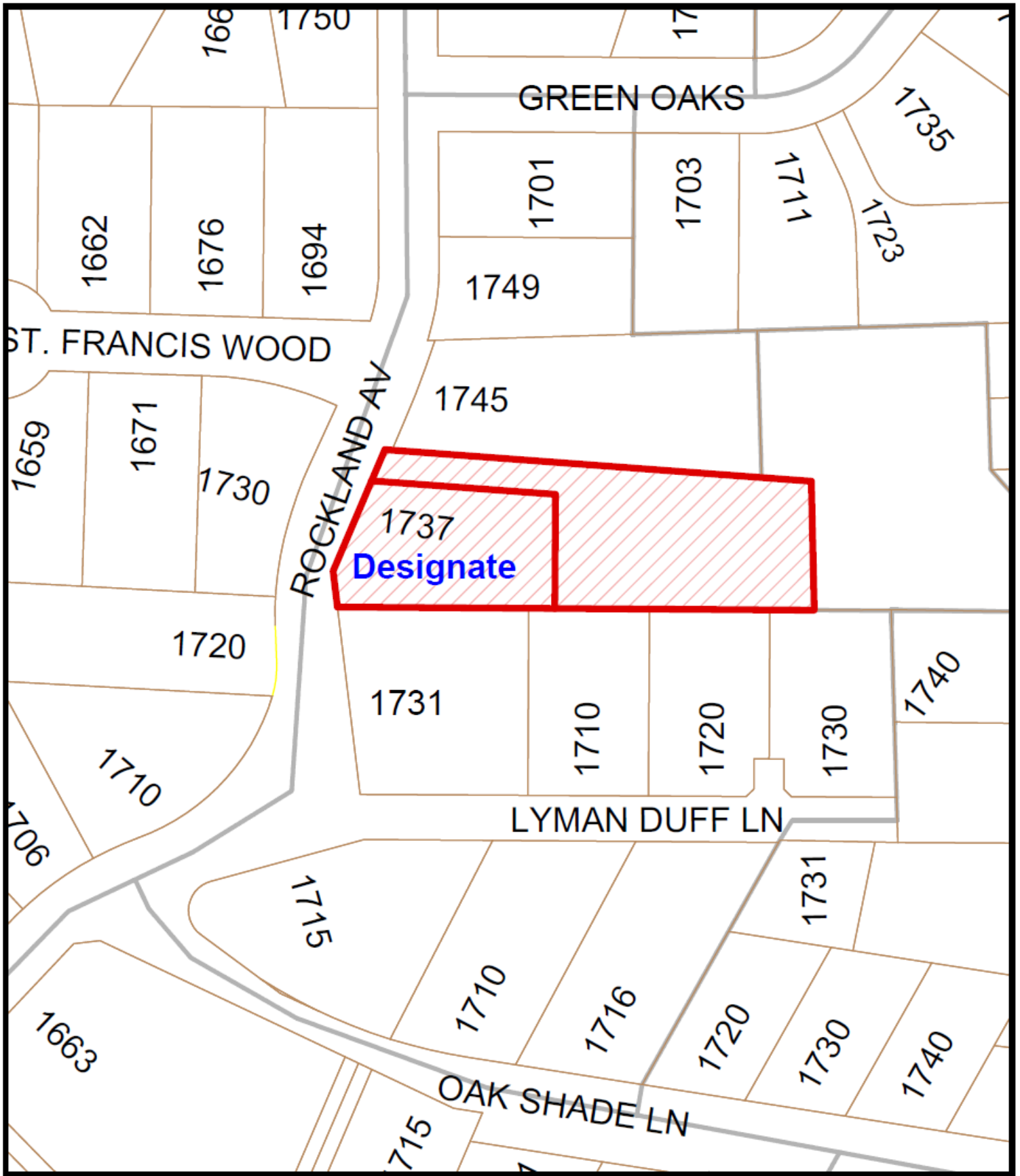
### FIRST FLOOR 2325 SQ. FT. 9'-10" TO 10' CEILING HEIGHT



1737 Rockland Ave - Building Exterior and Section of Rubble Stone Fence



Exterior Feature C:  
Building exterior,  
Rubble stone wall  
(south of driveway)



1737 Rockland Ave  
Rezoning No.00755

