



# Legal Survey

3



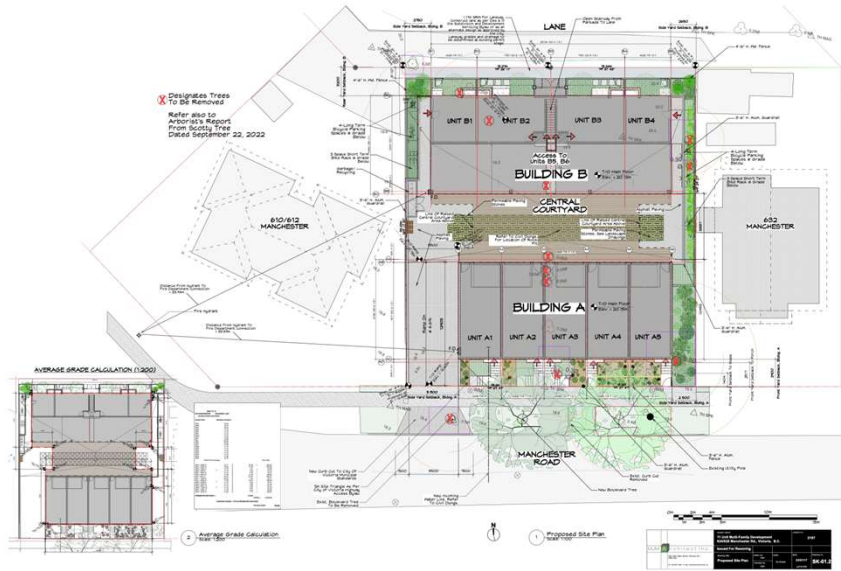
December 14<sup>th</sup>, 2023



3

# Proposed Site Plan

4



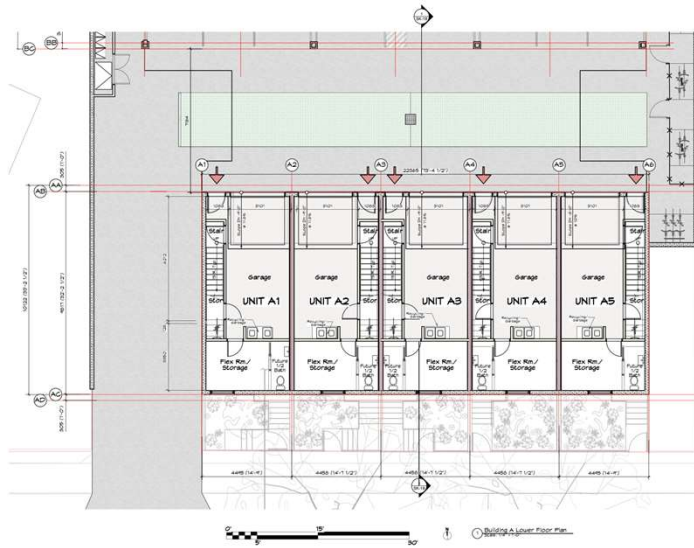
December 14<sup>th</sup>, 2023



4

## Lower Floor Plan – Building A

5



December 14<sup>th</sup>, 2023

PROJECT	11 East Walk Family Development - 2023	DATE	2023
CLIENT	11 East Walk Family Development - 2023	DESIGNER	City of Victoria
DESIGNER	City of Victoria	PROJECT NO.	231201
DATE	2023	SCALE	SK-02



5

## View of Parking

6



View Looking East Towards Bicycle Parking

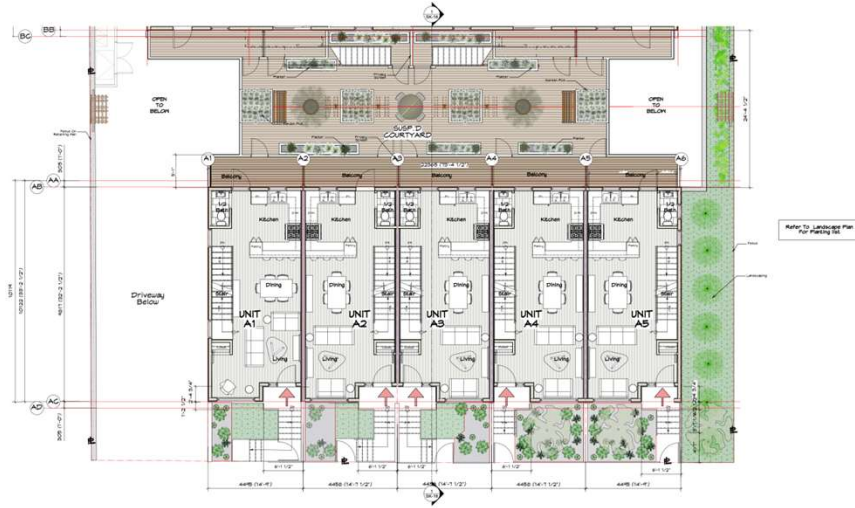
December 14<sup>th</sup>, 2023



6

# Building A – Main Floor Plan

7



December 14<sup>th</sup>, 2023

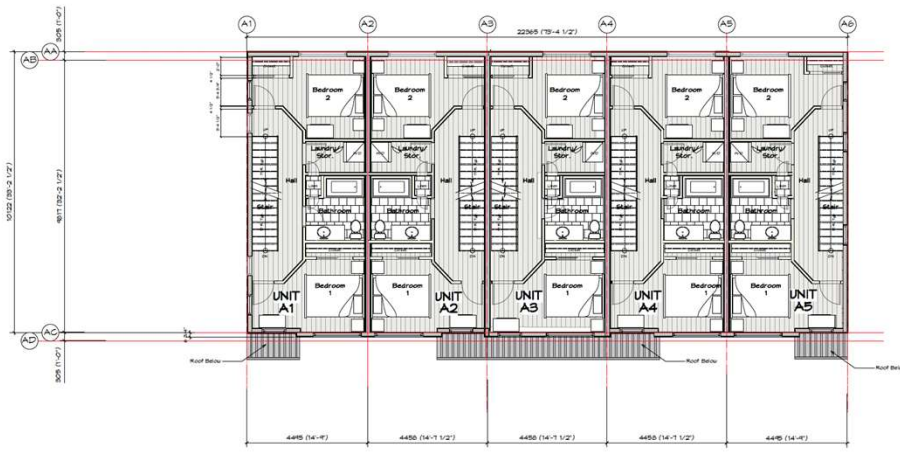
	Project: 1518 Multi-Family Development 1518 West Broadway St., Victoria, B.C.	Project No.: 7197
	Drawing: Building A - Main Floor Plan	Drawing No.: SK-03



7

# Building A – Second Floor Plan

8



December 14<sup>th</sup>, 2023

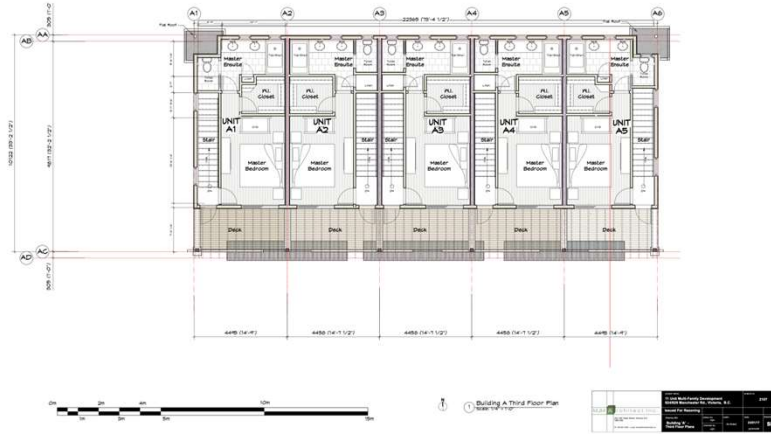
	Project: 1518 Multi-Family Development 1518 West Broadway St., Victoria, B.C.	Project No.: 7197
	Drawing: Building A - Second Floor Plan	Drawing No.: SK-04



8

### Building A – Third Floor Plan

9



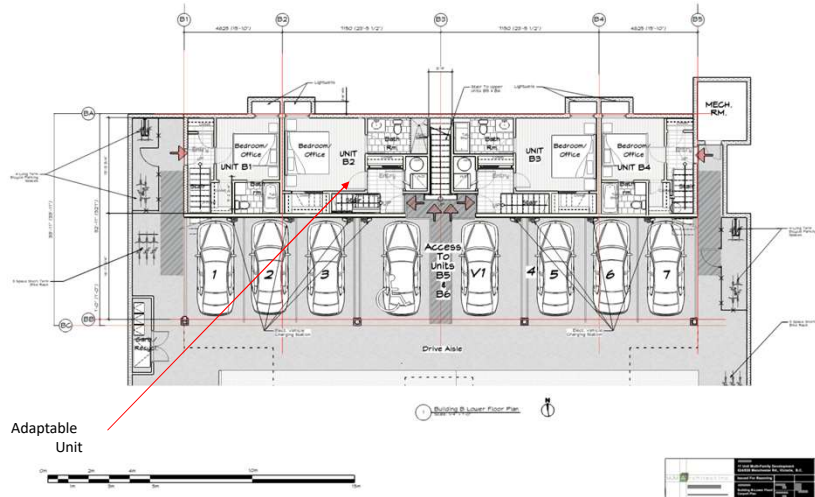
December 14<sup>th</sup>, 2023



9

### Building B – Lower Floor Plan

10

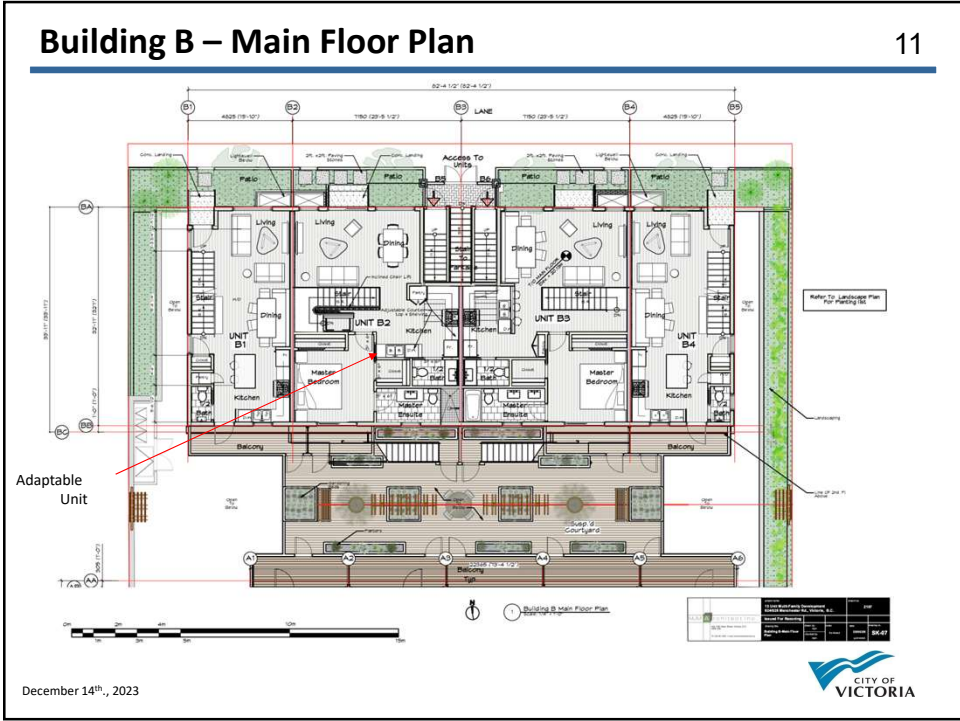


December 14<sup>th</sup>, 2023

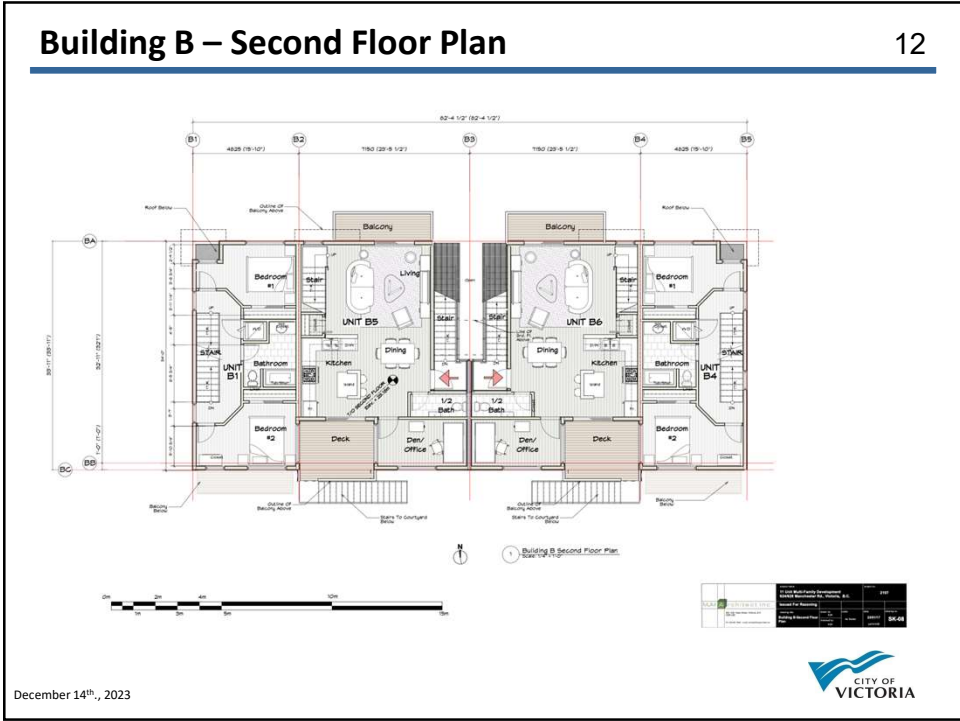


10





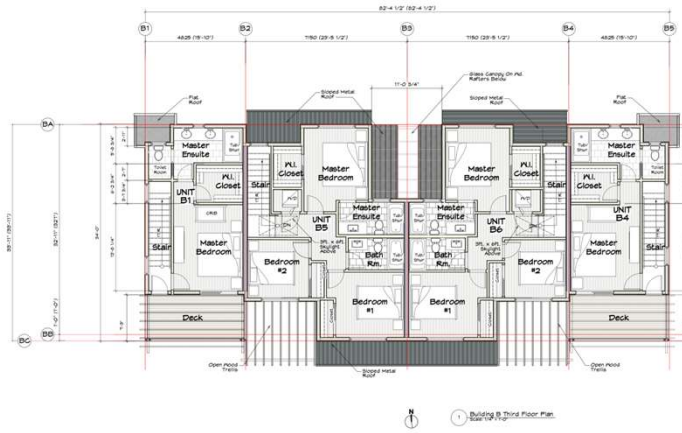
11



12

# Building B – Third Floor Plan

13



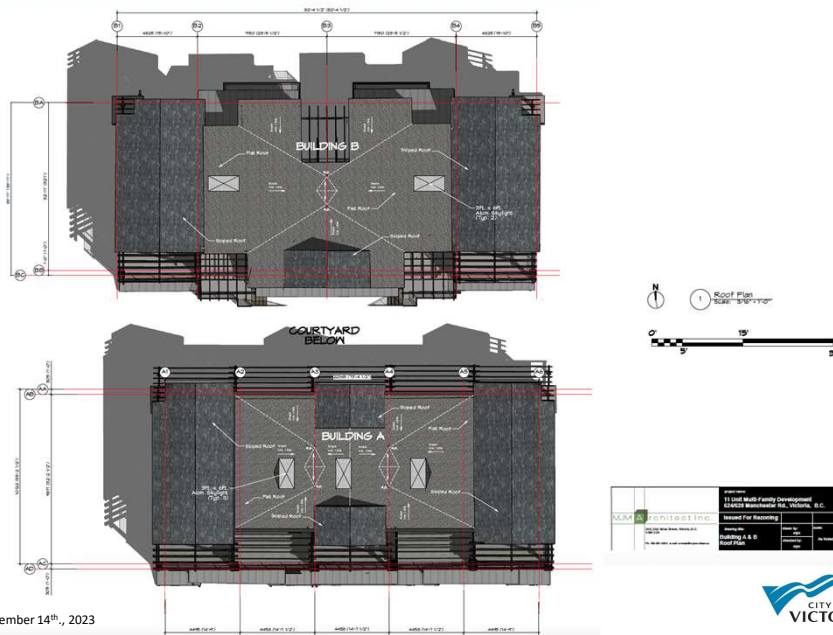
December 14<sup>th</sup>, 2023



13

# Roof Plan

14



December 14<sup>th</sup>, 2023



14







## Exterior Viewed from Manchester

19



1 View Of Building A From Manchester

December 14<sup>th</sup>, 2023

	11 Unit Multi-Family Development 12403 Manchester Rd., Victoria, B.C.	Project No. 2187
	Issued For Recording Drawing No. SK-15	Date Issued 12/14/23



19

## Exterior Viewed From Lane

20



1 View Of Building B From Lane

December 14<sup>th</sup>, 2023

	11 Unit Multi-Family Development 12403 Manchester Rd., Victoria, B.C.	Project No. 2187
	Issued For Recording Drawing No. SK-15	Date Issued 12/14/23



20

# View OF Central Courtyard

21



View Looking West



View Looking East

December 14<sup>th</sup>, 2023

<b>VULM ARCHITECT INC.</b> 224-1111 West Parkside St. Victoria, BC V8M 1Y1 Tel: 250.363.4444 www.vulm.ca	project: 11 Unit Multi-Family Development 624/28 Manchester Rd., Victoria, B.C.	drawing no.: 2107
	based For Rectifying: site: 624/28 Manchester Rd. zoning: Community Redevelopment use: Multi-Family Residential	title: SK-17



21

# North/South Section Through Site

22



1 North/South Section Thru Site  
Scale: 3/16" = 1'-0"

1 North/South Section Thru Site  
Scale: 3/16" = 1'-0"

December 14<sup>th</sup>, 2023

<b>VULM ARCHITECT INC.</b> 224-1111 West Parkside St. Victoria, BC V8M 1Y1 Tel: 250.363.4444 www.vulm.ca	project: 11 Unit Multi-Family Development 624/28 Manchester Rd., Victoria, B.C.	drawing no.: 2107
	based For Rectifying: site: 624/28 Manchester Rd. zoning: Community Redevelopment use: Multi-Family Residential	title: SK-18



22

# Streetscape Looking North

23



December 14<sup>th</sup>, 2023

M.M. ARCHITECTS INC.	Project:	15 Unit Multi-Family Development	2023
	Address:	24-32 Manchester St., Victoria, B.C.	
	Scale:	1/8\"/>	



23

# Shadow Study

24



December 14<sup>th</sup>, 2023

M.M. ARCHITECTS INC.	Project:	15 Unit Multi-Family Development	2023
	Address:	24-32 Manchester St., Victoria, B.C.	
	Scale:	1/8\"/>	

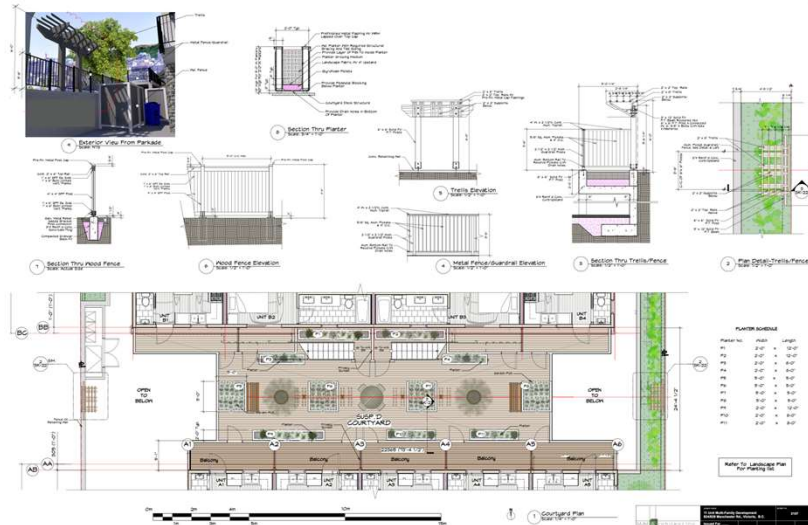


24



# Hardscape Details

25



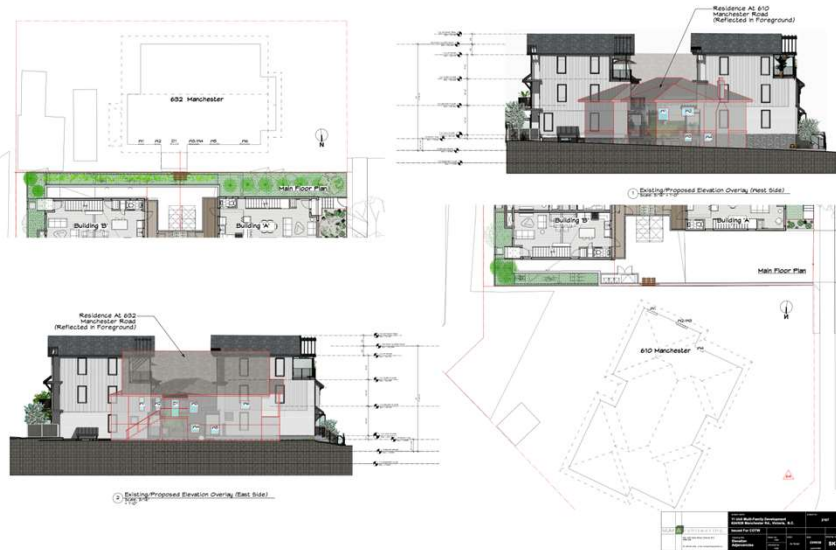
December 14<sup>th</sup>, 2023



25

# Elevation Adjacencies

26



December 14<sup>th</sup>, 2023



26



