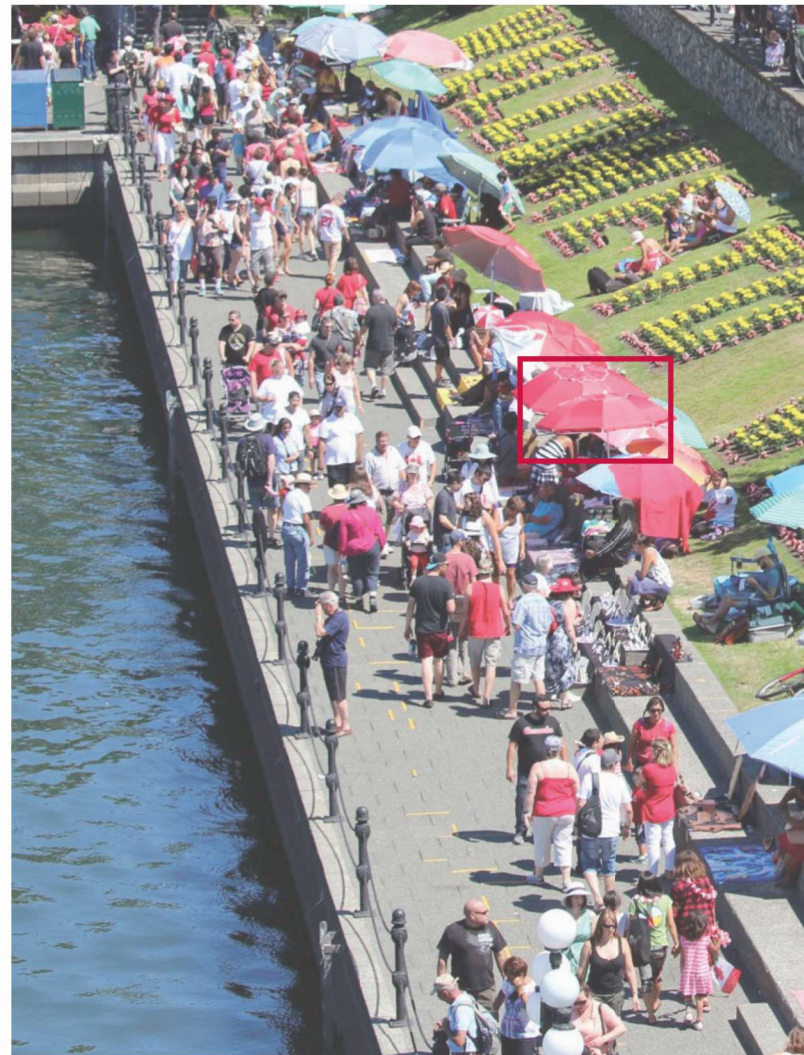
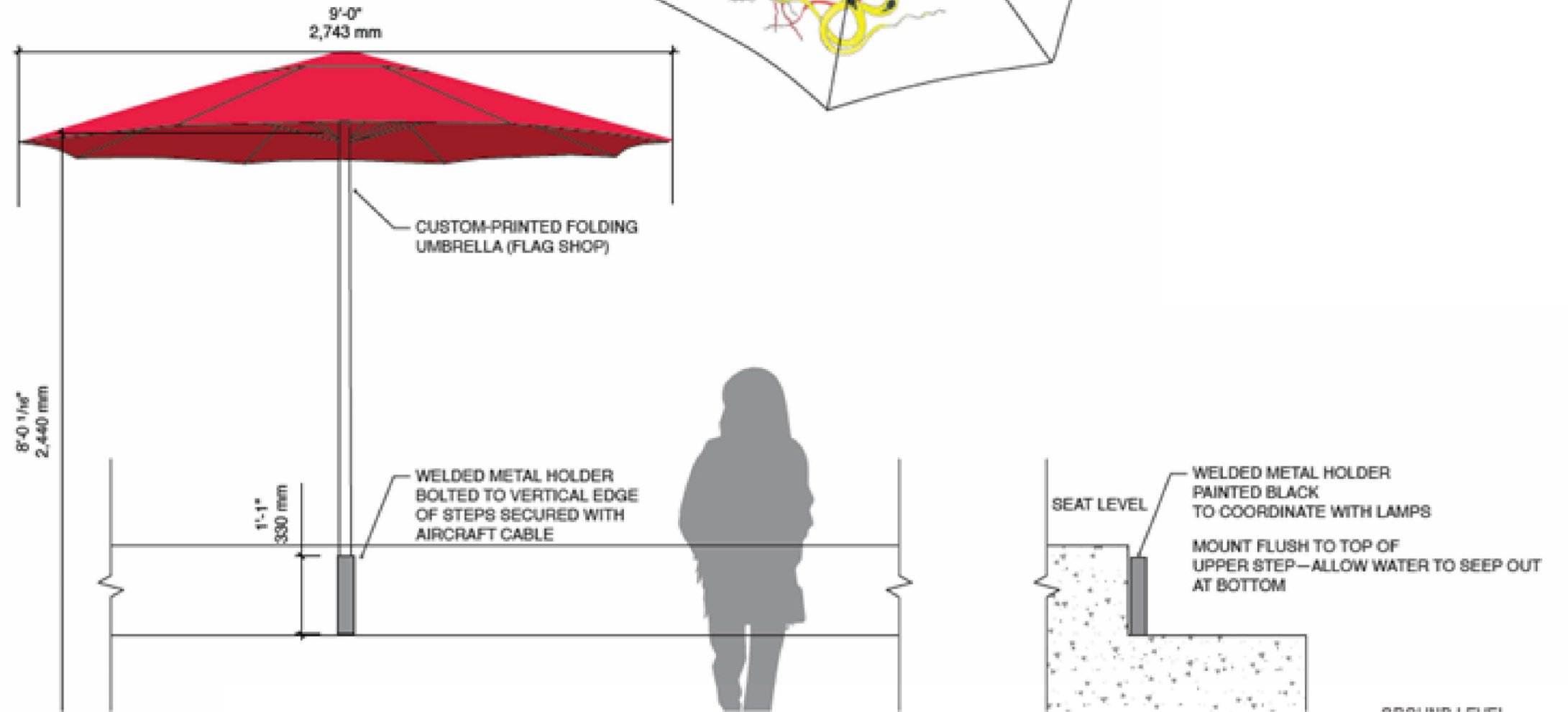
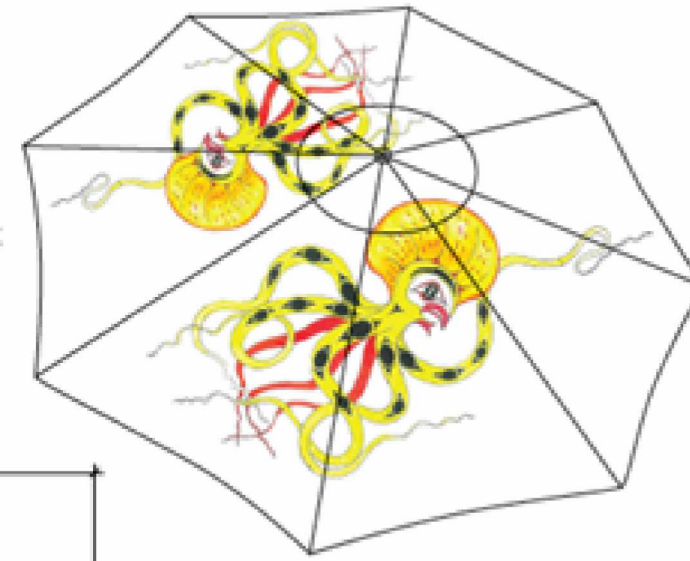


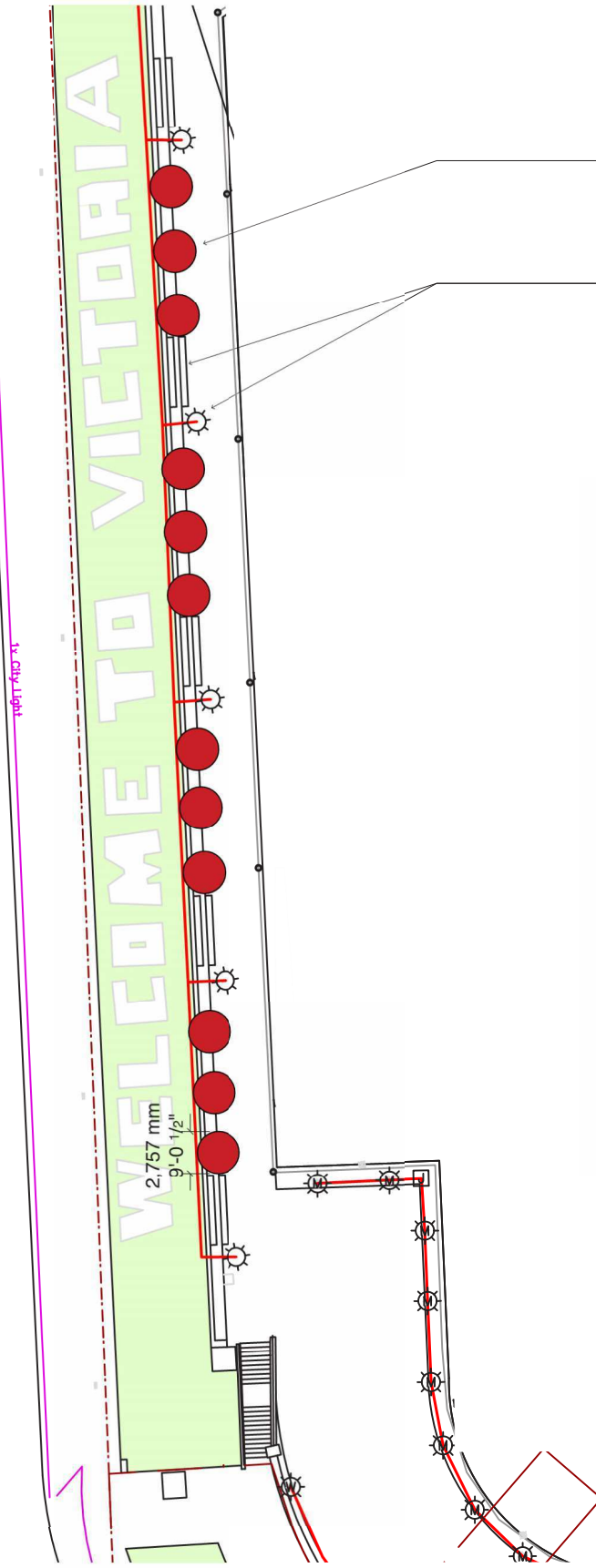
# Attachment D

**Original Submission**  
 Received Date:  
 March 22, 2024



RED UMBRELLA WITH  
 ARTWORK BY BUTCH DICK  
 SKETCH NOT FINAL





TWELVE UMBRELLA LOCATIONS WITH ANCHORS — NOT ALL NEED TO BE USED AT ALL TIMES

AVOID STEPS AND LAMPS



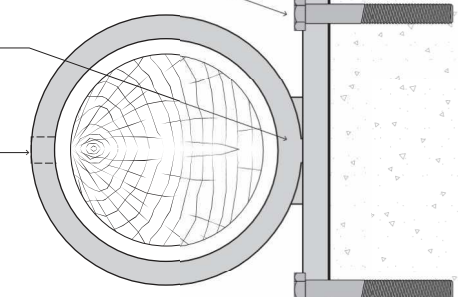
**LOCATIONS** The cluster of umbrellas will act as a sign that activity is taking place along this portion of the seawall. Not all umbrellas need to be mounted at all times, however a critical mass of at least 6 at a minimum is important.

**PLAN**  
1:50

BOLT TO VERTICAL EDGE OF STEPS

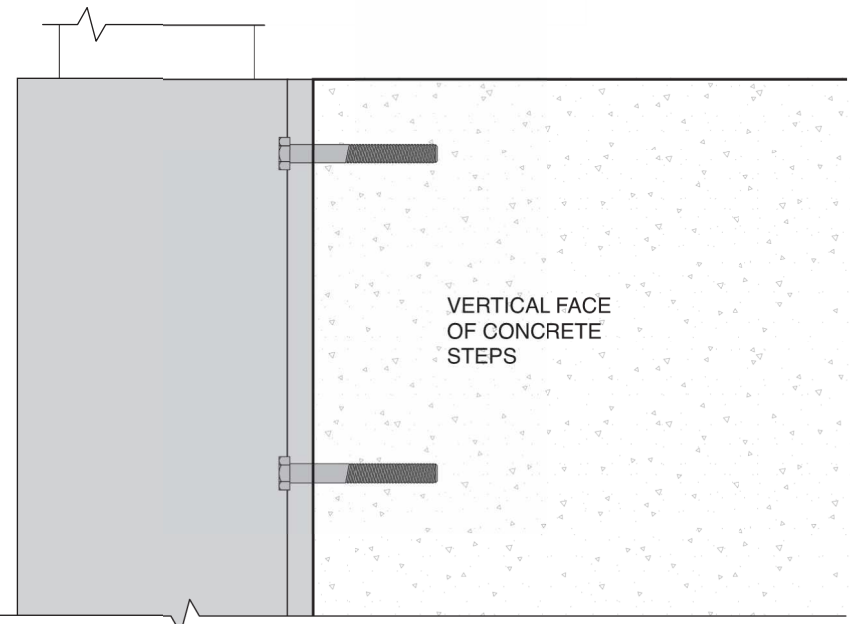
WELD METAL TUBE TO BOLTING PLATE

HOLE DRILLED FOR CHAIN OR AIRCRAFT CABLE



**PLAN - DETAIL**  
SCALE: 6"=1'0"

TOP OF CONCRETE STEP



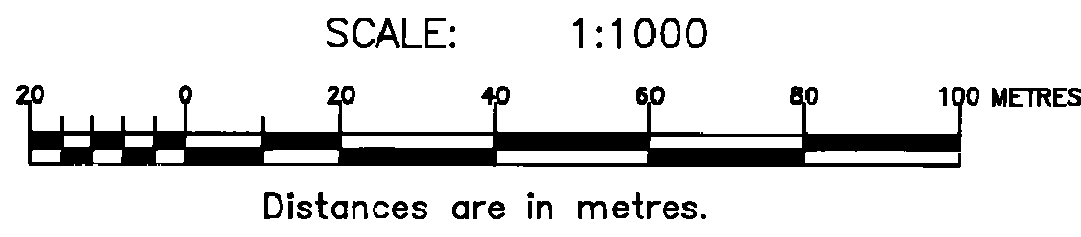
VERTICAL FACE OF CONCRETE STEPS

**ELEVATION - DETAIL**  
SCALE: 6"=1'0"

REFERENCE PLAN OF  
PART OF THE BED OF VICTORIA HARBOUR  
VICTORIA DISTRICT  
B.C.G.S. 92 B.044.

PLAN VIP 73552

Deposited in the Land Title Office at  
Victoria, B.C.  
this 11 day of April 2002  
[Signature]  
Registrar



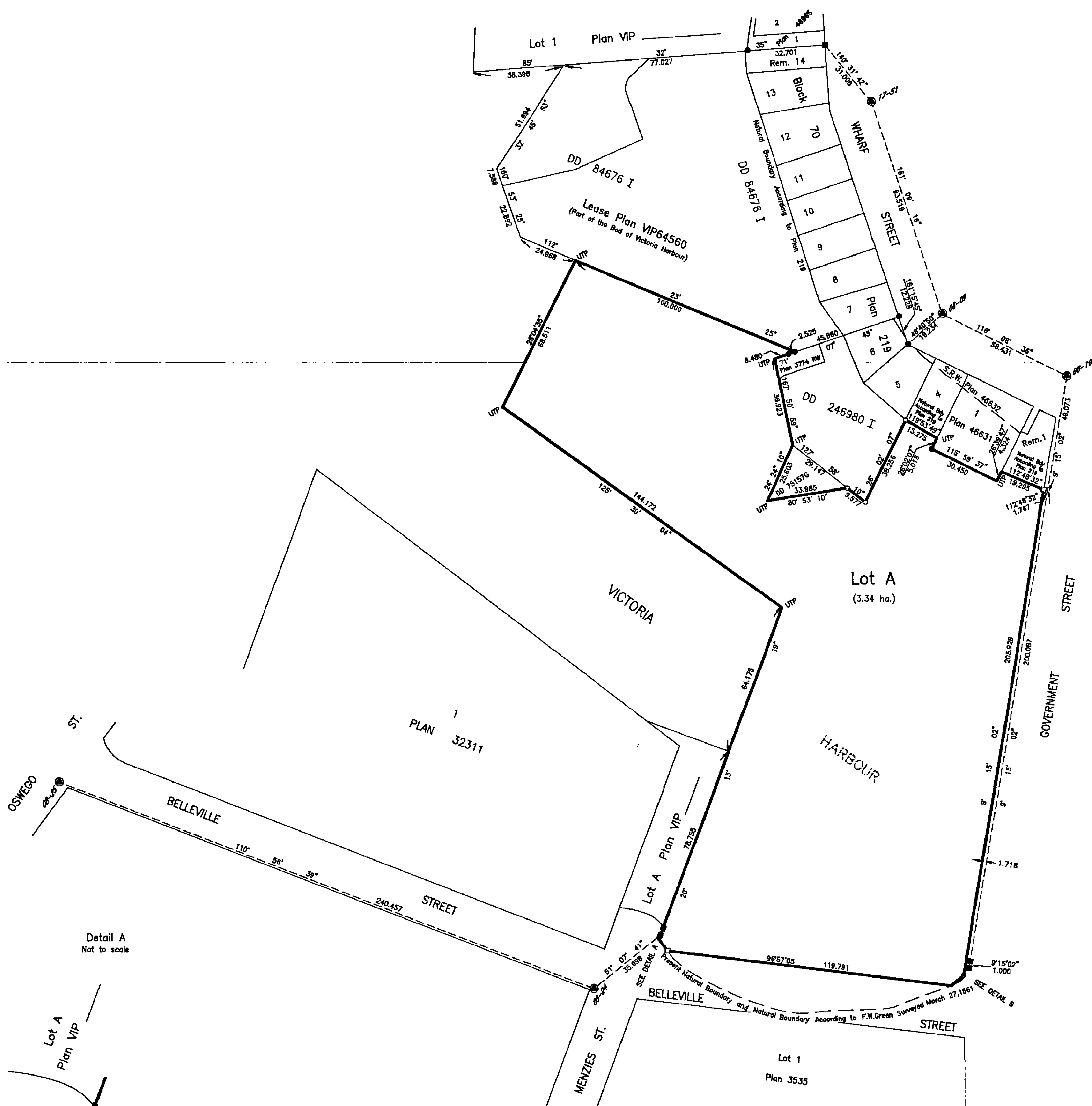
Integrated Survey Area #17, City of Victoria, NAD83(CSRS)  
Grid Bearings are derived from observations between  
Control Monuments 08-24 & 08-25  
This Plan Shows Ground Level Measured Distances,  
Prior to Computation of U.T.M. Co-ordinates  
Multiply by Combined Factor 0.9996105.

Legend

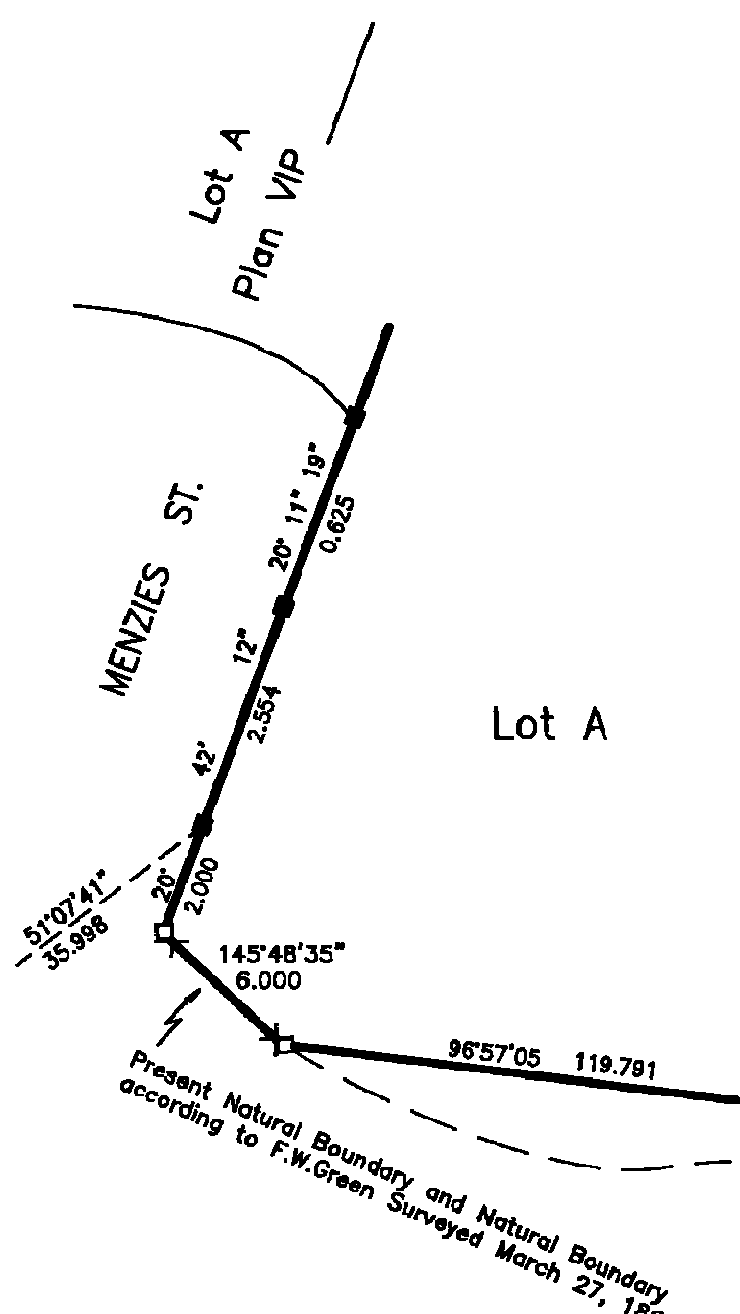
- Denotes Standard Iron Post (Type 5) Found
- Denotes Standard Iron Post (Type 5) Placed
- ⊙ Denotes Control Monument Found
- Denotes Lead Plug (Type 3) Found
- Denotes Lead Plug (Type 3) Placed
- Denotes Parker Katon Nail Placed
- UTP Denotes Unable To Place

E138552 JK

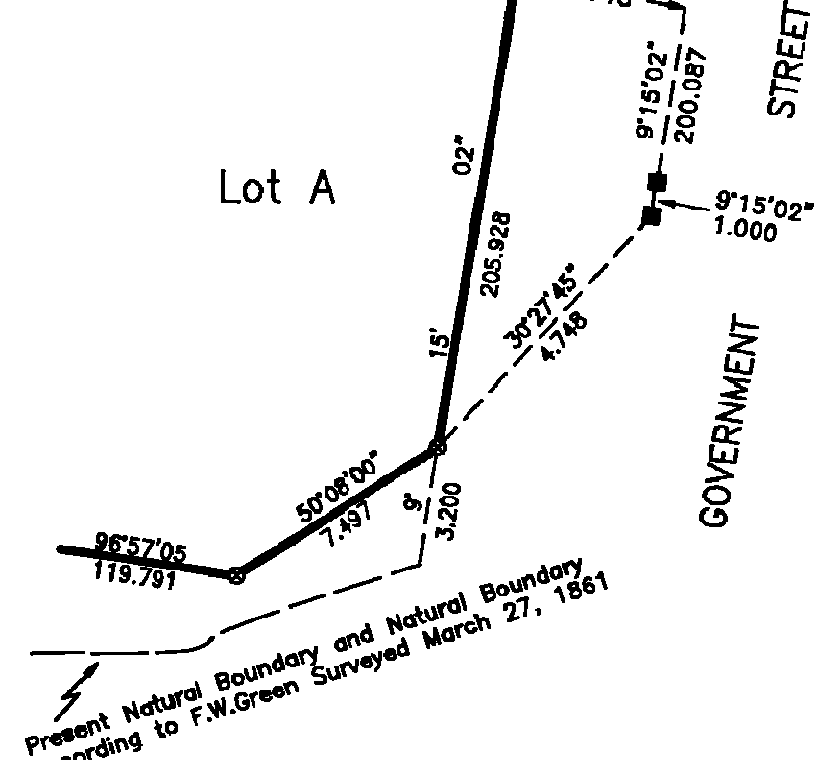
This Plan lies within the  
Capital Regional District.



Detail A  
Not to scale



Detail B  
Not to scale



Her Majesty The Queen in Right of Canada  
as represented by the Minister of Transport  
[Signature]  
Authorized Signatory  
Witness Jane Frost  
Occupation IC Coordinator  
Address #600-600 Burrard Vancouver

I, John L. Motherwell, a British Columbia Land Surveyor,  
of Victoria, in British Columbia, certify that I was present  
at and personally superintended the survey represented by  
this plan and that the survey and plan are correct.  
The survey was completed on the 4th day of June, 2000.  
[Signature]  
B.C.L.S.