



TRIMLITE

California 93120 Compliant For Formaldehyde Phase II





TRIMLITE

California 93150 Compliant For Formaldehyde Phase II

ROYAL

























ER-DD NDT EX-15

TOURNOUR MASONRY

TOURNOUR MASONRY

TOURNOUR MASONRY

TOURNOUR MASONRY

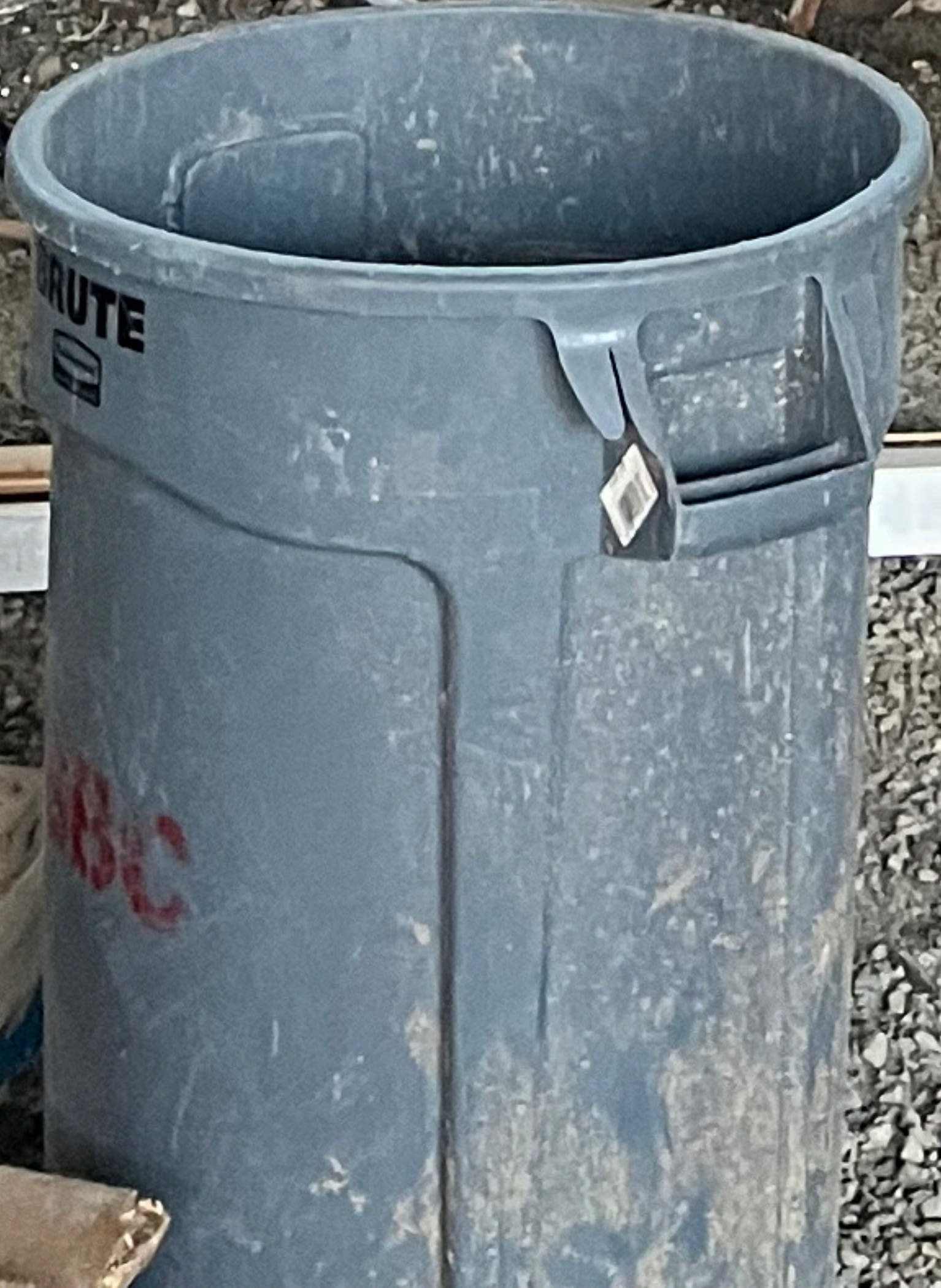
Handwritten orange arrow pointing left.

5' 0" South of AS

2C161 #3

2C10 #2

2C136 #1







































RENTALS

Genie

IC Power  
4x4

BROOKE





































MARK

2' Commons

3' Commons









ⓔ  
|









H S A S

489















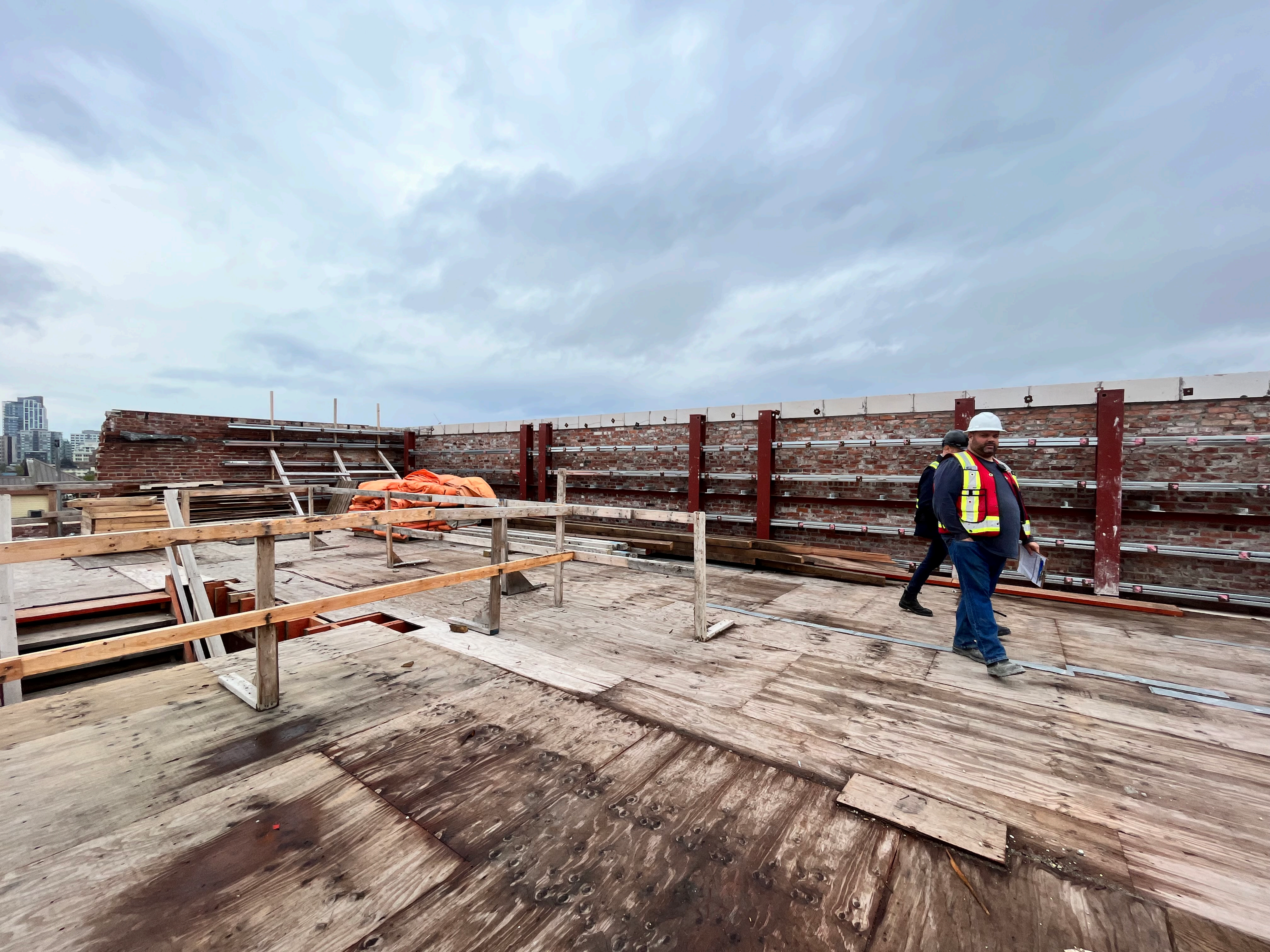
























18' x 12' x 5/8"  
TRYP  
SHEATING  
MADE IN  
CANADA













SOPH  
COLPHE  
PREMA  
PHENE