

NO. 24-057

A BYLAW OF THE CITY OF VICTORIA

The purpose of this Bylaw is to amend the Official Community Plan to change the urban place designation for 1964 Fairfield Road and 507 Foul Bay Road from Traditional Residential to Public Facilities, Institutions, Parks and Open Space.

Under its statutory powers, including Part 14, Division 4 of the *Local Government Act*, the Council of the Corporation of the City of Victoria in an open meeting enacts the following provisions:

- 1 This Bylaw may be cited as the “OFFICIAL COMMUNITY PLAN BYLAW, 2012, AMENDMENT BYLAW (NO. 55)”.
- 2 Bylaw No. 12-013, the Official Community Plan Bylaw, 2012, is amended by repealing Map 2: Urban Place Designations and replacing it with a new Map 2: Urban Place Designations, attached to this Bylaw in Schedule 1.
- 3 Bylaw No. 12-013, the Official Community Plan Bylaw, 2012, is amended by repealing Map 11: Parks, Open Space and Recreational Facilities and replacing it with a new Map 11: Parks, Open Space and Recreational Facilities, attached to this Bylaw in Schedule 2.
- 4 Bylaw No. 12-013, the Official Community Plan Bylaw, 2012, is amended by repealing Map 25: Gonzales Strategic Directions and replacing it with a new Map 25: Gonzales Strategic Directions, attached to this Bylaw in Schedule 3.

READ A FIRST TIME the                    **1<sup>st</sup>**    day of                    **August**                    2024

READ A SECOND TIME the                    **1<sup>st</sup>**    day of                    **August**                    2024

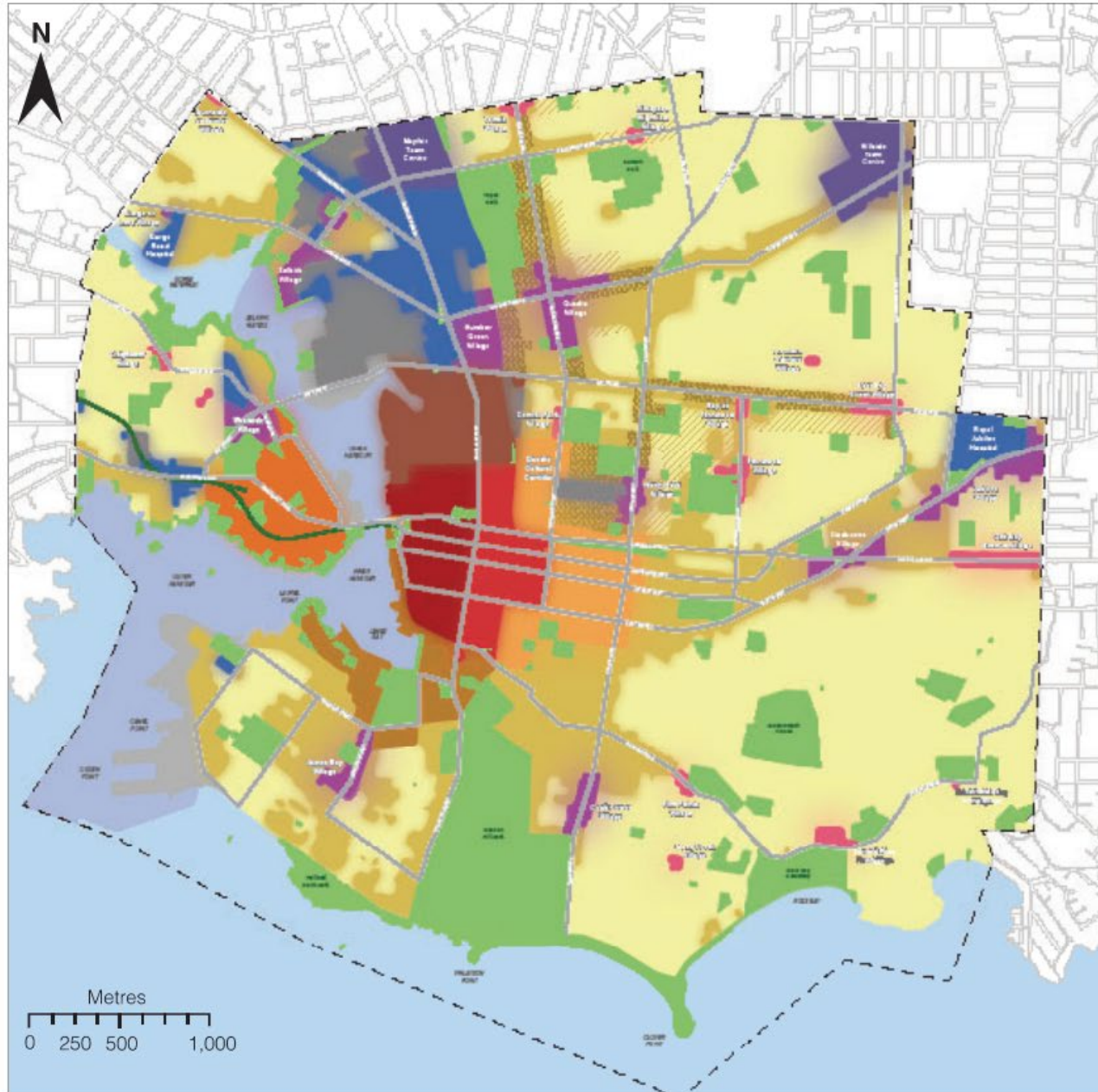
Public hearing held on the                                       day of                                       2024

READ A THIRD TIME the                                       day of                                       2024

ADOPTED on the                                       day of                                       2024

CITY CLERK

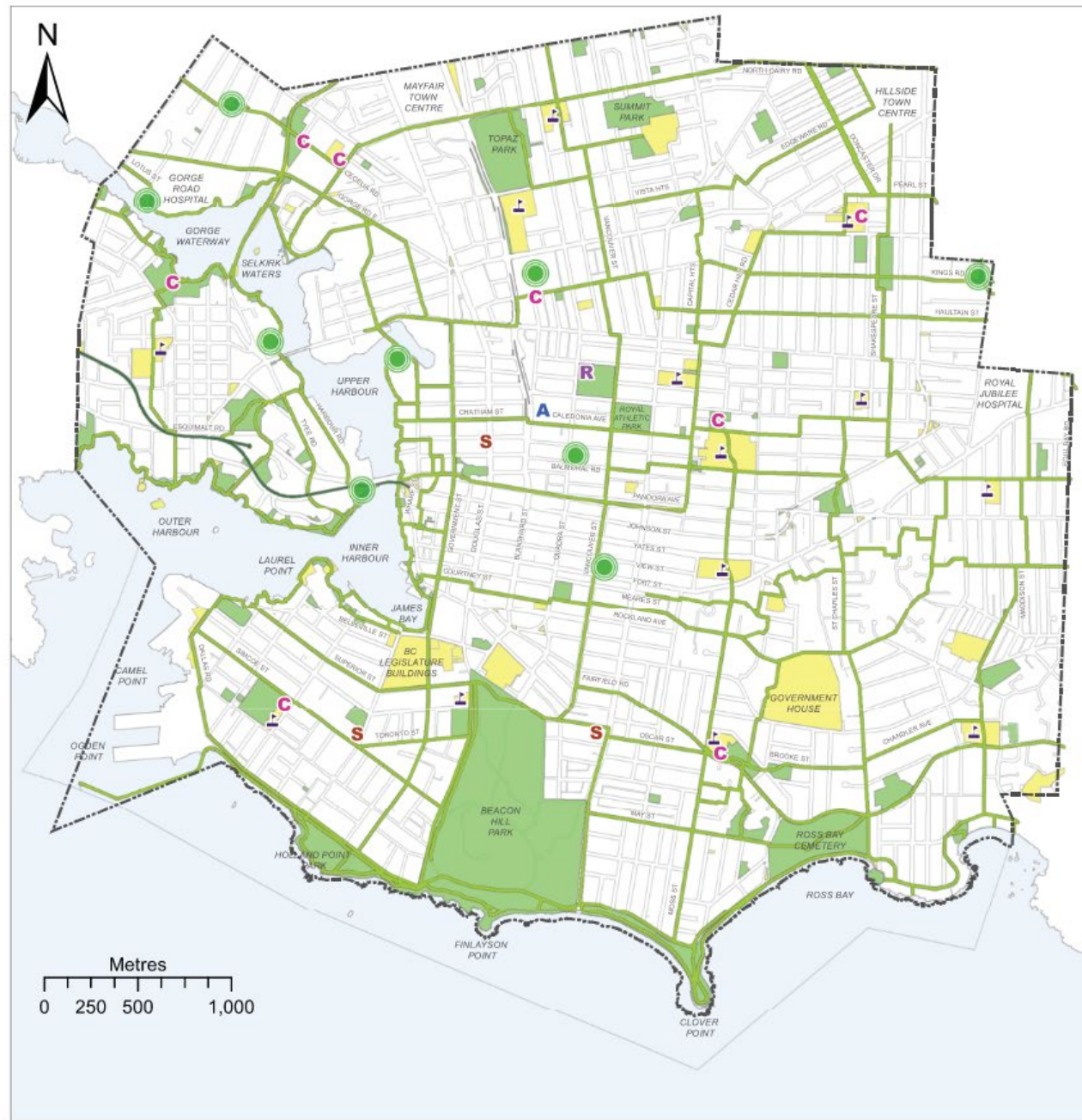
MAYOR



## MAP 2 Urban Place Designations

- Core Historic
- Core Business
- Core Employment
- Core Inner Harbour / Legislative
- Core Songhees
- Core Residential
- General Employment
- Urban Industrial
- Marine Industrial
- Town Centre
- Large Urban Village
- Small Urban Village
- Housing Opportunity
- Urban Residential
- Mixed Residential
- Traditional Residential
- Public Facilities, Institutions, Parks and Open Space
- Rail Corridor
- Working Harbour
- Marine

Areas adjacent to a different designation should consider transitional scales, which may depart from the guidance in this plan.



**MAP 11**  
Parks, Open Space and Recreational Facilities

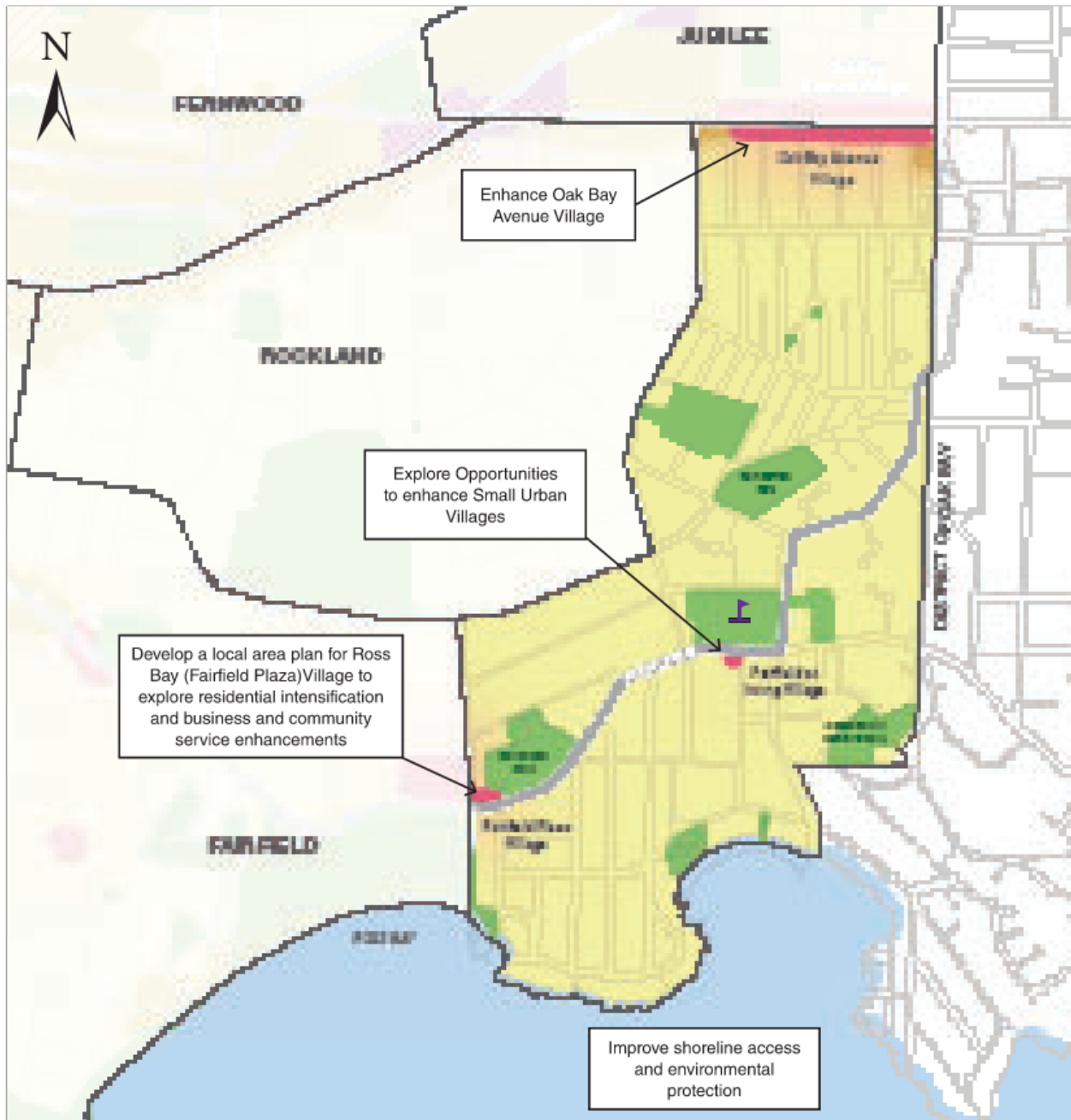
- C** Community Centre
- R** Recreation Centre
- S** Seniors Centre
- A** Arena
- ⌄** Existing Public School
- ⊙** Proposed Park (approximate location)
- Park
- Open Space
- Designated Greenway
- Rail Corridor

Park: Land managed by the City of Victoria as a park.

Open Space: Land that is generally publicly-accessible, other than City parks. Includes private lands, public lands and other City-held property, such as greens and street rights of way.

This map is provided for information purposes only. Please refer to Map 2 and Figure 8 for designation information.

# MAP 25 Gonzales Strategic Directions



Urban Place Designations\*

- Small Urban Village
- Urban Residential
- Traditional Residential
- Public Facilities, Institutions, Parks and Open Space
- Marine

Public Facilities

- Existing Public School

\*Urban Place Designations are provided for information only. Please refer to Map 2 and Section 6 for designation information.