

Michigan Street Community Garden Relocation: Study of City-owned Parcels

	Location	Available Land Area (Existing Site = 560 sq.m.)	Growing conditions	Environmental Impacts	Site Access	Proximity to existing garden	Land Issues	Costs	Other comments
1	Irving Park	835 sq.m. (Larger than existing community garden site)	1. Some shading adjacent building and tree canopy; 2. Potential acidic needle fall from trees to north	None.	Adjacent to Seniors Activity Center, On-street parking available	135m	None	Low	Some re-grading required; On-site public washrooms
2	Belleville Street Green / Centennial Park	419 sq.m. (Belleville Green) 121 sq.m. (Centennial Park) (Smaller than existing community garden)	1. North facing sloping site 2. Heavy shading from tree canopy	Requires tree removal	On-street parking available	6.4 blocks	May conflict with future redevelopment of ferry terminal	Medium	Site is secluded - no 'eyes on the garden'
3	Fisherman's Wharf Park	Size could vary - Larger than existing community garden site	Sunny, south facing	None.	On-street parking and pay lot available	4.5 blocks	None	Low	Potential for community garden in this location was explored during public consultation for development of Management Plan and ruled out.
4	Holland Point Park	Size could vary - Larger than existing community garden site	South facing, subject to wind and salt spray	Natural areas site	On-street pull in parking	4.5 blocks	None	Low	On-site public washroom
5	Lewis Park	445 sq.m. (Smaller than existing community garden site)	Shading from large tree	Potential tree removal	Limited on-street parking	6.5 blocks	None	High	Requires relocation of existing children's play lot
6	Rithet Street	Extra wide ROW could be reconfigured	1. South facing, good exposure; 2. Minimal shading from trees or adjacent buildings	None.	No parking available	4 blocks	Bylaws prohibit structures in Boulevards, therefore this location couldn't accommodate tool sheds or other garden structures.	High - would require costly road redesign	Multiple utilities run under this ROW (gas, sewer, storm on north side, water on south side) - maintenance issues or upgrades to these utilities in the future would require removal of the gardens.
7	South Park	Larger than existing community garden site	1. South facing, good exposure; 2. Some shading from tree canopy;	None.	On-street parking available	6.5 blocks	Leased by School District 61	Low	School District currently maintains this park space, and is not supportive of locating a garden here
8	Macdonald Park - Niagara Street Frontage	Extra wide grass boulevard adjacent to playing fields could be reconfigured	1. Heavy shading from existing tree canopy; 2. Acidic needle drop and soil conditions from cedar trees; 3. Numerous shallow tree roots	1. Building gardens on shallow tree roots could damage trees or garden boxes; 2. Potential tree removal	On-street parking available		This block of Niagara is identified in the Pedestrian Master Plan for a future sidewalk - sidewalk will be located in 1.75m of greenspace that is currently in ROW, leaving minimal garden space.	Medium - could require tree pruning sidewalk redesign	During rugby games or other events at Macdonald Park, this frontage is quite busy; a community garden in this location would conflict with these current uses
9	Todd Playlot	850 sq.m. (Larger than existing community garden site)	1. Some shading from large tree located on site	None.	On-street parking available		In contravention of land trust for this site.	High - would require relocation of existing playground equipment	Very close to existing James Bay Allotment Garden
10	Beacon Hill Park - all weather fields	Size could vary - Larger than existing community garden site	1. Minimal shading, good exposure	None.			Challenges in relation to the Park Trust	Low	All-weather fields host year-round athletic programming that will conflict with community garden use: North all-weather field was used for 335 hours in 2014 (soccer and rugby) South all-weather field was used for 294 hours in 2014 (soccer) Ball diamond was used for 63.45 hours in 2014 (slo pitch)
11	Laurel Point Park	685 sq.m. (Larger than existing community garden site)	1. North facing sloping site; 2. Shading from tree canopies; 3. Site is subject to wind and salt spray	Potential tree removal	Difficult to access point along Harbour Pathway - no parking available		None	Medium - would require tree pruning and construction of terraced beds	Site is secluded - no 'eyes on the garden'
12	Charles Redfern Park	1,500 sq.m. (Larger than existing community garden site)	Shading from tree canopies	Potential tree removal	1. On-street parking available; 2. Adjacent pay parking lot	6 blocks	None	Medium - could require tree pruning	
13	Quadra Park	395 sq.m. (Smaller than existing community garden site)	Shading from tree canopies	Requires removal of horticulture beds and trees	1. On-street parking available	5.5 blocks	None	Medium - would require removal of existing trees and horticulture beds	



City Owned Parcels

01/30/2015



Legend

- Neighbourhood Boundaries
- City Owned Parcels

Sites Considered for Community Gardens

- Irving Park
- Belleville Street Green / Centennial Park
- Fisherman's Wharf Park
- Holland Point Park
- Lewis Park
- Rithet Street
- South Park
- Macdonald Park - Niagara St Frontage
- Todd Playlot
- Beacon Hill Park - all-weather fields
- Laurel Point Park
- Charles Redfern Park
- Quadra Park



406.4 0 203.20 406.4 Meters

NAD_1983_CSRS_UTM_Zone_10N

This map is a user generated static output from an Internet mapping site and is for reference only.
Data layers that appear on this map may or may not be accurate, current, or otherwise reliable.
Public domain: can be freely printed, copied and distributed without permission.
THIS MAP IS NOT TO BE USED FOR NAVIGATION

1: 8,000



Notes

1. Irving Park



Red dashed line delineates approximate size of current Michigan Street Community Garden



Current Site Conditions

2. Belleville Street Green / Centennial Park



--- Red dashed line delineates approximate size of current Michigan Street Community Garden



Current Site Conditions

3. Fisherman's Wharf Park



----- Red dashed line delineates approximate size of current Michigan Street Community Garden



Current Site Conditions

4. Holland Point Park

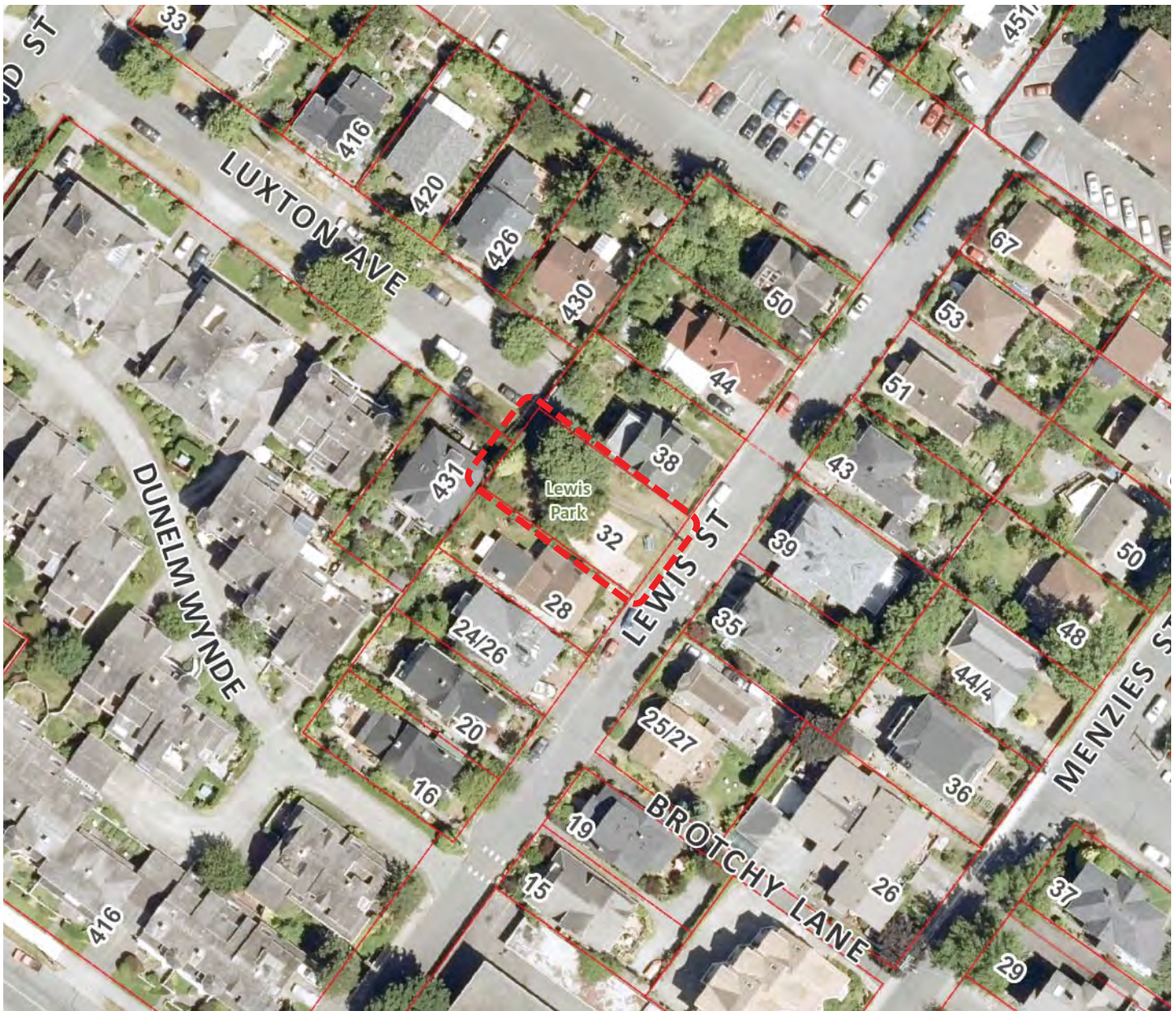


Red dashed line delineates approximate size of current Michigan Street Community Garden



Current Site Conditions

5. Lewis Park



Red dashed line delineates approximate size of current Michigan Street Community Garden



Current Site Conditions

6. Rithet Street



Current Site Conditions

7. South Park



----- Red dashed line delineates approximate size of current Michigan Street Community Garden



Current Site Conditions

8. Macdonald Park - Niagara Street Frontage

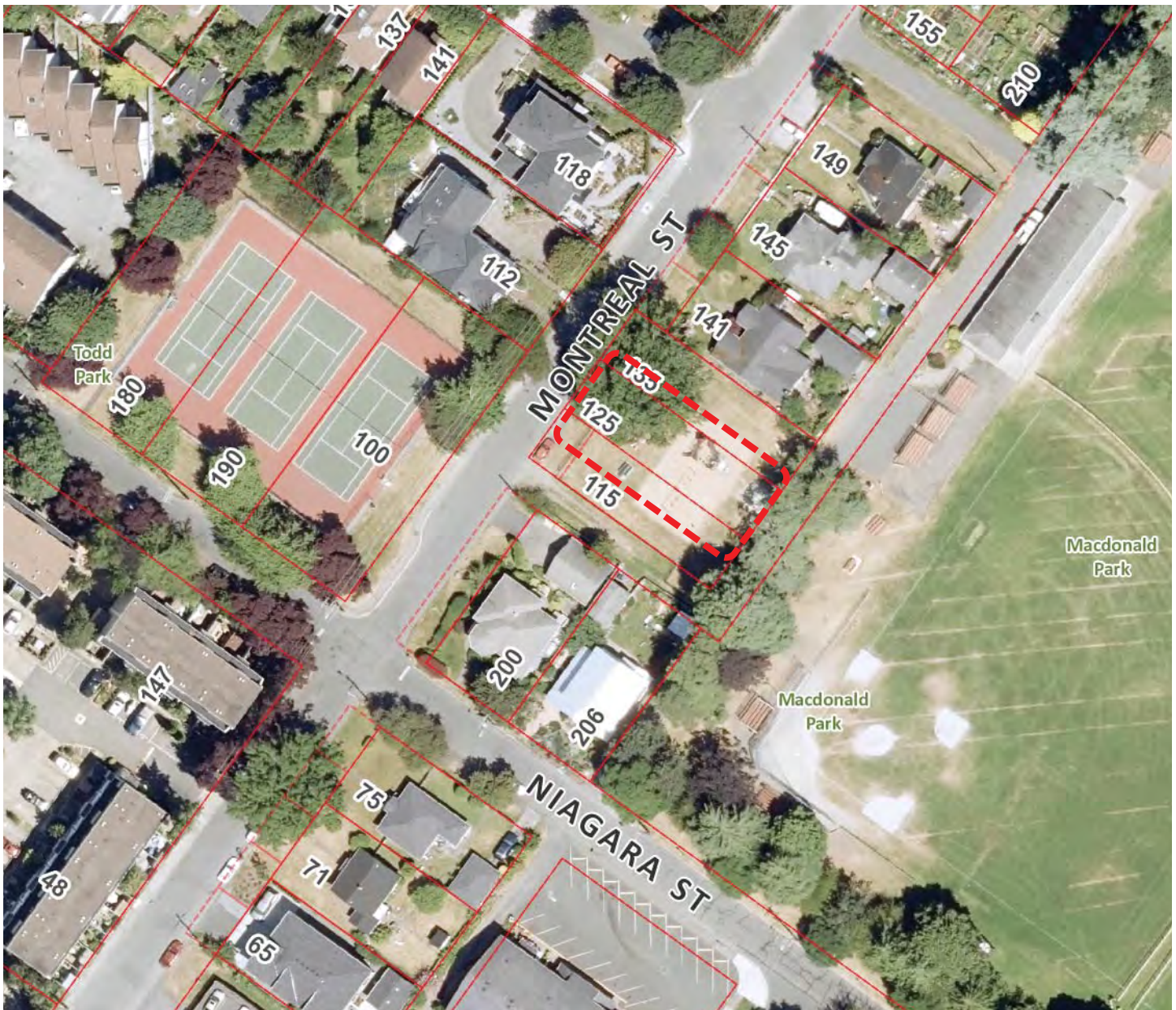


Red dashed line delineates approximate size of current Michigan Street Community Garden



Current Site Conditions

9. Todd Playlot



Red dashed line delineates approximate size of current Michigan Street Community Garden



Current Site Conditions

10. Beacon Hill Park - all-weather fields



Red dashed line delineates approximate size of current Michigan Street Community Garden



Current Site Conditions

11. Laurel Point Park



----- Red dashed line delineates approximate size of current Michigan Street Community Garden



Current Site Conditions

12. Charles Redfern Park



Red dashed line delineates approximate size of current Michigan Street Community Garden



Current Site Conditions

13. Quadra Park



Red dashed line delineates approximate size of current Michigan Street Community Garden



Current Site Conditions