



JOHNSON STREET BRIDGE REPLACEMENT PROJECT

**PUBLIC REALM AND  
LANDSCAPE DESIGN STRATEGY**

PREPARED BY  
**SHARP & DIAMOND LANDSCAPE ARCHITECTURE INC**  
SEPTEMBER 27, 2012

**JOHNSON STREET BRIDGE REPLACEMENT PROJECT  
PUBLIC REALM AND LANDSCAPE DESIGN STRATEGY**

**DOCUMENT PREPARED BY**  
**Sharp & Diamond Landscape Architecture Inc**  
Ken Larsson, Mike Enns, and Brett Hitchins

**PRODUCED FOR**  
City of Victoria

**PROJECT CONSULTANTS**  
MMM Group (Prime Consultant and Project Manager)  
Wilkinson Eyre Architects (Bridge Design)

**PRINTED**  
September 27, 2012  
Revision A

# Contents → →

## **EXECUTIVE SUMMARY**

### **1.0 CONCEPT**

- 1.1 Site Plan Concept
- 1.2 Downtown Site Plan Enlargement
- 1.3 Victoria West Site Plan Enlargement

### **2.0 COMPONENTS OF THE PUBLIC REALM**

- 2.1 Surfacing
- 2.2 Planting
- 2.3 Furnishing
- 2.4 Lighting
- 2.5 Walls
- 2.6 Sustainability

## Executive Summary

This document summarizes decisions made with City Parks, Engineering, including feedback from the Public, and refinement of project scope to meet anticipated budgets, prior to proceeding to Detailed Design Drawings. This information will be provided to the proponents for inclusion in the overall budget for the project.

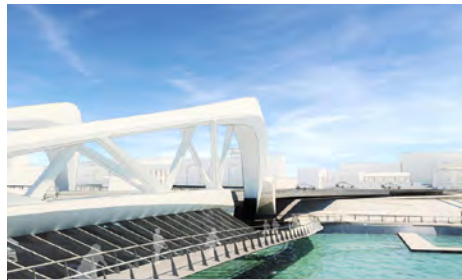
Preliminary designs including location, scale, general program and character have been discussed with City staff, and the public. Specifics including a refined program, details, materials, budgets, and potential long term phasing have also been addressed. As part of early works, we anticipate design refinements to coordinate road edges, sidewalks, crossings, boulevards, retaining wall materials and slope design.

This document references background analysis, objectives, design principles, preliminary design, and the budgeting for components of the public realm. It offers insight to the design rationale behind the landscape design: the scale of spaces; the connections between these spaces; how these spaces might be used; and what combinations of materials were considered. Consideration of, and integration with, adjacent development has been included.





EXISTING BRIDGE



PROPOSED BRIDGE



DESIGN TEAM AND CITY WORKSHOPS



NATURE AS INSPIRATION



CONCEPTS



MATERIALS



MULTI-USE PATHWAYS



CONTEMPORARY PLAZAS



NATURAL LANDSCAPES



PRECINCTS





# Section 1: Design

## 1.1 Site Plan → →

**APPROXIMATE SITE AREA: 4.57 Acres**

The Johnson Street Bridge Public Realm Plan and components draw inspiration from the local context, site character, and the modern forms of the proposed bridge. Key design influences include:

- Diverse and vibrant urban character areas of the downtown and Victoria West
- The natural landscapes including the Garry Oak meadows of the Saanich Peninsula and bedrock character of Esquimalt / Victoria West
- Meet existing topography and conditions while strengthening connections and accessibility

### VICTORIA WEST



SITE PLAN

————— DOWNTOWN —————



NA



## Downtown Visualization → →

View of Johnson Street Plaza — looking East.





**Victoria West Visualization** → →

View of West Bank approach from Esquimalt Road — looking East.



## 1.2 Downtown Plan Enlargement → →

APPROXIMATE SITE AREA: 1.23 ACRES

---

### 1. GALLOPING GOOSE TRAIL HEAD AND PANDORA PLAZA

This junction of the regional multi-use path system pulls together urban precincts within the city's historic fabric to provide a symbolic trail head and flexible civic gathering space and viewing plaza.

**Scope:** 5M wide multi-use trail with enhanced pedestrian/cyclist crossing and left turn lane.

Boulevard street trees and shrub plantings, pedestrian lighting, railings, bollards, plaza areas as future gathering space

*Future Work:*

*Opportunity for ground level uses in association with Janion Building/site (outdoor cafe, seating, small events, etc.).*

*Opportunity to interpretive the story of Janion Hotel, Swans roundhouse, E&N Rail, Canoe Club, underground stream etc. together with regional trail network map.*

*Explore connection to David Foster Way (Harbour Pathway).*

---

### 2. CENTRAL GREEN (JOHNSON / PANDORA)

A central welcoming civic green presence to re-establish the bridge connection to the city

**Scope:** Green lawn, seating widened sidewalk, boulevard plantings, ornamental tree grove, retain existing Oak Tree

*Future Work:*

*Public Art and Lighting.*

---

### 3. WHARF STREET BOULEVARD AND JOHNSON STREET MEDIAN

Existing green space with sidewalk, existing trees, and historic marker to remain. Street median provides green gateway and traffic calming.

**Scope:** Repair and replace concrete sidewalk and turf as required to boulevard

Textured raised median with street trees

---

### 4. JOHNSON STREET PLAZA

Spectacular civic viewing plaza and urban green space terminus for southside pedestrian bridge path with grade accessible access to downtown.

**Scope:** Textured paving, seating, concrete retaining walls, plantings, retain existing Oak Trees, railings, bollards, pedestrian lighting, contemporary furnishings.

*Future Work:*

*Informative signage program together with regional trail network map.*

*Explore connection to David Foster Way (Harbour Pathway).*

*Integration with Northern Junk property.*



**NOTE:**

Traffic laning and crosswalks shown schematically, refer to civil for further detail. Refer to electrical for lighting.



EXPLORE DFW CONNECTION

JANION HOTEL

STORE STREET

SWAN'S HOTEL

PANDORA AVENUE

SLOPE TO MATCH EXISTING GRADES

NORTHERN JUNK PROPERTY

WHARF STREET

JOHNSON STREET



## 1.3 Victoria West Design Plan Enlargement → →

APPROXIMATE SITE AREA: 3.34 ACRES

---

### 1. ESQUIMALT / HARBOUR ROAD STREETScape

Gateway to Victoria West. Boulevard, median improvements, and formalized intersection will slow down traffic speed, provide visual interest with safe access to Delta Hotel.

**Scope:** Signalized intersection with improved sidewalk crossings, boulevard sidewalks.

---

### 2. GALLOPING GOOSE MULTI-USE TRAIL AND FLYOVER MULTI-USE BRIDGE

Junction of the regional multi-use E&N Rail Trail with spectacular views and grade access to Upper Harbour and south to Inner Harbour.

**Scope:** 5M wide multi-use trail, rock walls and boulder groupings, railings, pedestrian lighting, park tree plantings, custom meadow seed and bulb grass mix.

*Future Work:*

*Informative signage program with regional trail network map.*

---

### 3. S-CURVE LANDS

Future City green space within the decommissioning of the existing S-Curve roadway.

**Scope:** Regrade and seed this area to a 3:1 maximum grade.

*Future park design by Parks & Recreation Department.*

---

### 4. SOUTHSIDE VIEW PLAZA

Significant gathering space with spectacular views to Inner Harbour. Grade accessible pedestrian path follows original alignment of Delta Hotel access road.

**Scope:** Textured paving, seating, concrete retaining wall, tree plantings, landscape and pedestrian lighting, railings, stairs to bridge path

**NOTE:**  
Traffic laning and crosswalks shown schematically, refer to civil for further detail.  
Refer to electrical for lighting.





## Section 2: Components of Public Realm

Key design influences that will provide the foundation for the selection of type and location of surfacing materials, site furnishings, plant materials and architectural elements include, but are not limited to:

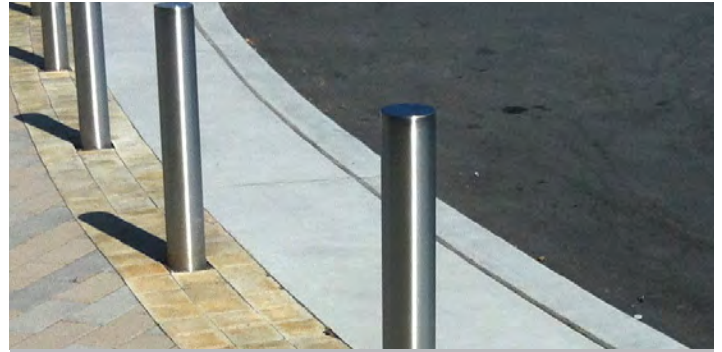
- The City Design Guidelines
- Site Context including diverse and vibrant character areas of the Downtown and Victoria West
- Local materials, availability, and inspiration of natural landscape
- Modern contemporary design of Johnson Street Bridge
- City Engineering, Operations, and Maintenance
- Project budget and Design Principles

Final selection, design, and locations of materials is subject to revision by City Staff, Operations, and Maintenance.

### EXAMPLES OF FINAL SURFACING SHOWN BELOW:



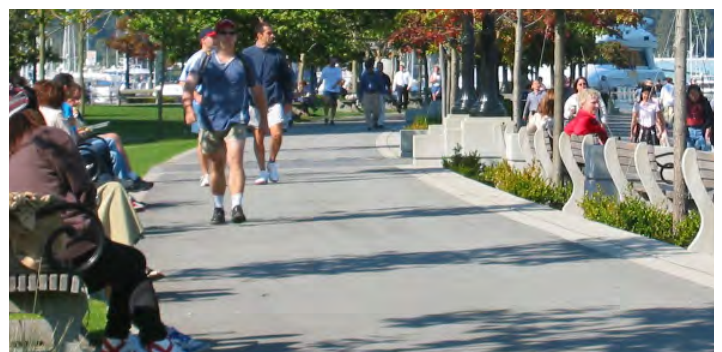
CONCRETE UNIT PAVING



CONCRETE BAND



PLAZA AND VIEWING



ASPHALT WITH CONCRETE EDGE



SCORED CONCRETE / GRID PATTERNS



STONE PAVING AT KEY EDGES



## 2.1 Surfacing → →

**Intent: Plazas:** *Plazas are the gathering spaces, places where people socialize, and nodes for pause and movement. As such, these spaces accommodate flexible programmatic uses, with emphasis on scale and simple materials palette.*

**Intent: Multi-Use Pathways:** *The surface treatment should be durable, functional, and respond to the needs of ALL users. Contrasting or textured materials delineate path, intersections and help direct traffic flow. Special attention will be made to safety markings, areas to pause and view, beginning and ends, with visual and functional edging materials*

**Intent: Sidewalks:** *Important components include: crosswalk texturing, design of curb drops, curb edge types, integration of utilities, grid proportions, and boulevard plantings and street trees should be considered.*

### 1. PLAZAS

#### Concrete Unit Paving

- Size: 150 x 300 x 60mm; 150 x 150 x 60mm concrete unit paver on sand, granular base.
- Colour: 60% natural, Charcol; 40% Sand Blend

#### Concrete Edge

- Finish: Smooth Trowel
- Width: 200-500mm

#### Stone Setts

- Size: 150 x 150 x 75mm
- Finish: Cut flame finish granite on sand bed, granular base

### 2. MULTI-USE PATHWAY

#### Asphalt

- 5m wide asphalt with concrete edge

#### Cast-in-Place Concrete Edge

- Width varies: 200-500mm wide smooth trowel finish

### 3. SIDEWALKS

#### Cast-in-Place Concrete

- Sawcut pattern or tooled joint pattern. Final dimensions as per detailed design.

#### Median

- Raised median with textured concrete (pattern to be confirmed with COV).
- Tree planting pit with rock cobble mulch

## 2.2 Planting → →

*Intent: Plant materials and palette responds to unique site location, program and use, orientation, and climate while considering traffic and people movement, sitelines, safety, and maintenance.*

### 1. Downtown Urban Areas And Plazas

- Park Trees: River Birch, Katsure, Tupelo, Locust (7cm), and Shore Pine (3-5m ht.)
- Shrub Plantings: Wheatgrass, Sedge, Strawberry Bush, Californai Lilac, Snowberry, Fescue, Kinnikinick, Sedum
- Retain existing large Oak Trees where possible

### 2. Streetscapes And Sidewalks

- Street/Median Trees: Fastigate Maple and Beech (8cm cal.)
  - Structural soil to promote healthy and robust rooting systems
  - Boulevard Shrub: Boxwood, Spurge, Sedge, Bluegrass, Fescue

### 3. Victoria West (Natural Slopes)

- Park Trees: Garry Oak, River Birch, Arbutus, Tupelo, Pln Oak, Locust, Shore Pine (3-5m ht.)
- Meadow groupings and pockets of native bulbs with fescue grass mix

### 4. Rock Dry Stream

- 75-100mm angular rock mix with basalt boulders





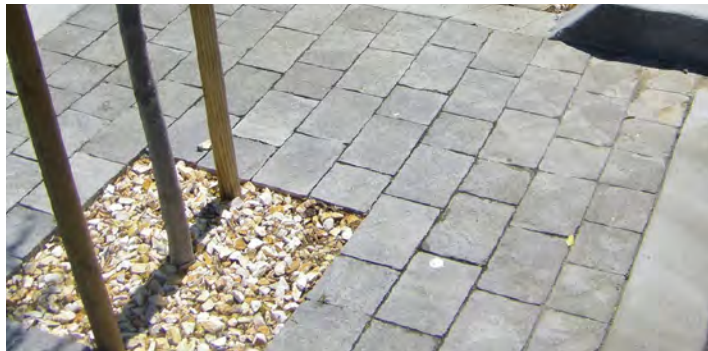
**STREET TREES**



**RETAINED OAK TREES**



**EXISTING SCULPTURAL GARRY OAKS**



**TREED MEDIAN**



**DRY ROCK STREAM**



**URBAN AREAS: SEASONAL PLAZA PLANTING**



**VICWEST: WILD FLOWERS MEADOW**



**NATURAL SLOPES: TREE CLUSTERS AND GRASSES**



## 2.3 Furnishings → →

**Intent:** The furniture should be of modern industrial aesthetic, balancing contemporary materials with local designs, long term maintenance and operations. Placement and orientation determined by pedestrian nodes, views, sunlight, areas for interaction, and input from City staff. Seating can be incorporated with lighting applications to welcome night-time use.

Incorporate seating materials into overall design aesthetic (materials, edges, steps, walls). Wide seating surfacing allows for multiple uses (group seating, lying, reading etc.) Consider moveable seating for outdoor spaces (cafe, urban parks) in association with future building edges.

**Railings:** Consider ramp slope less than 5% to avoid excessive ramps and railings in landscape. Use in high traffic areas, intersections, and adjacent to steep grade changes or hazard. Incorporate bridge forms and materials and incorporate signage where applicable to expand on site heritage and existing views

### **Seating**

- Freestanding: NU Wood Bench 2.5m length by Landscape Forms complete with backrest.
- Bench tops: IPE wood slats by Francis Andrew.

### **Bollards**

- Stainless steel 125mm diameter x 750mm height to direct pedestrian / bike movement.

### **Drinking Fountain**

- Stainless steel with dog bowl or approved alternative. Supplier to be confirmed.

### **Railings**

- Galvanized stanchions with stainless steel rail and cable.

### **Bike Racks**

- Ring by Landscape Forms, with stainless steel finish.

## 2.4 Lighting → →

**Intent:** Lighting provides opportunity for public interaction, symbolic reference, and to accentuate built form and plantings. Lighting should reflect sustainability, energy efficiency, and complement the architectural bridge lighting.

### **Pedestrian Lighting**

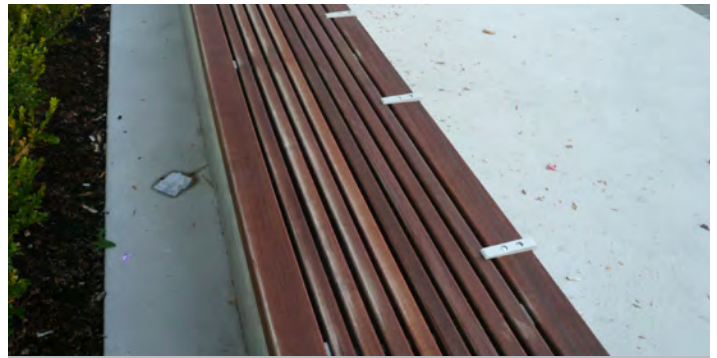
- SETI Pole and LED Luminaire by Beacon along multi-use pathway and plazas

### **Recessed Wall Lightings**

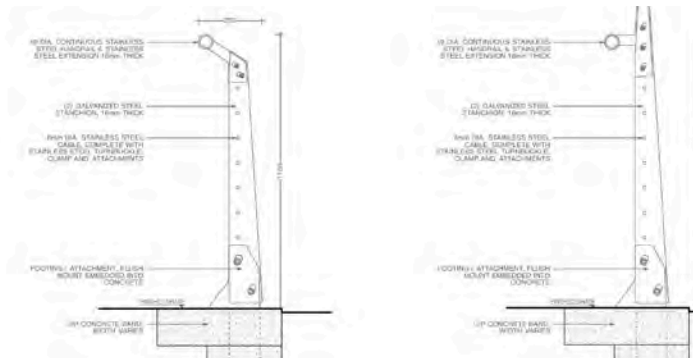
- Step Light 7"round by Architectural Area Lighting to light stairs



MODERN WOOD BENCHES



WOOD ON CONCRETE SEAT WALL: WIDE PLAZA SEATING



RAILINGS



DRINKING FOUNTAIN



LUMINAIRES: DARK SKIES



TRASH



BOLLARDS



BIKE RACK



RECESS WALL LIGHTING



## 2.5 Walls → →

**Intent:** Wall types and forms are inspired by historic remnant stone walls throughout the downtown, inner harbour and old town, and of the dramatic and symbolic natural rock outcroppings throughout the peninsula.

Mechanically stabilized walls will be required as part of civil roadworks and bridge construction package. However, smaller scale landscape walls will stabilize slope, shape and define entry, provide texture and interest to roadscape, ramps, and sitting edges.

A higher level of detailing and finish are proposed in the more urban downtown setting with possible integration with lighting public art, signage, and furnishing elements. Victoria West side is envisioned to be rockstack design. Note: final wall type, design, and locations to be coordinated with project budget, and City approvals.

### Stone Faced Retaining Wall

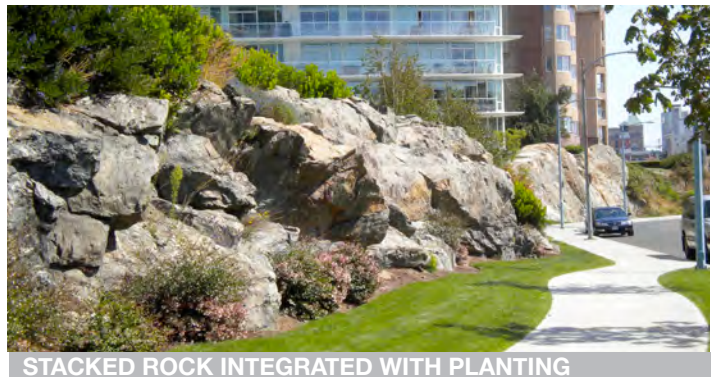
- Horizontally stacked rough cut basalt ledgestone facing with 250mm precast concrete cap

### Low Concrete Seat Walls

- Architectural finish, no chamfer, 450mm - 600mm ht x 500mm wide

### Rock Stack And Boulder Outcroppings

- Stacked local large basalt/sandstone shape boulders in groupings to grade slope, provide interest, and incorporate natural plantings





## 2.6 Sustainability → →

*Intent: The Johnson Street Bridge Public Realm promotes sustainable initiatives through celebrating pedestrian and energy efficient multi-use pathways, increasing surface permeability, water efficient landscapes, and maximizing habitat.*

### Permeability And Stormwater

- Use permeable surfaces where possible to maximize infiltration and reduce runoff

### Urban Heat Island

- Treed canopy for shade and reduce urban heat island and improve urban forest

### Water Efficiency

- Water wise and locally adapted plant species and improve biodiversity and regenerative landscapes

### Energy Efficiency

- Seamless and intuitive pedestrian and multi-use pathways encourage reducing reliance on cars
- Encourage use of local products and distributors within 500km radius
- Efficient lighting (LED)



CYCLING AND WALKING ROUTES



NATURAL LOCALLY ADAPTED PLANTINGS

JOHNSON STREET BRIDGE REPLACEMENT PROJECT  
**PUBLIC REALM AND  
LANDSCAPE DESIGN STRATEGY**

PRODUCED BY  
**SHARP & DIAMOND LANDSCAPE ARCHITECTURE INC**