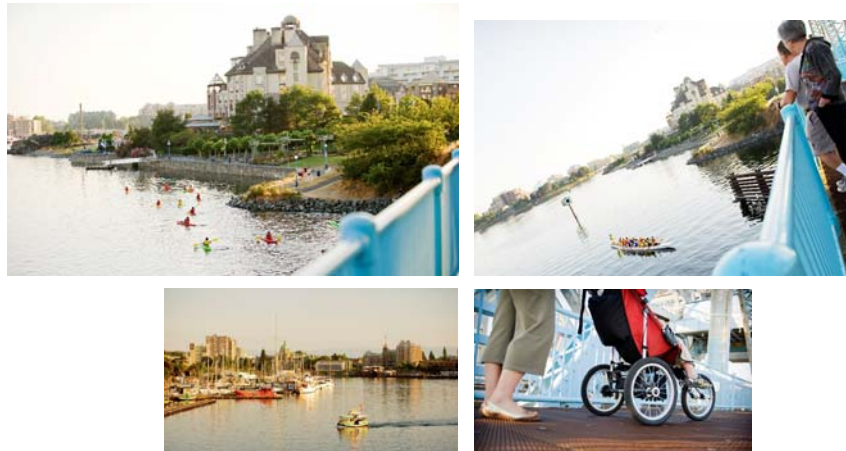


Johnson Street Bridge Public Realm Update



August 20, 2015

JohnsonStreetBridge.com



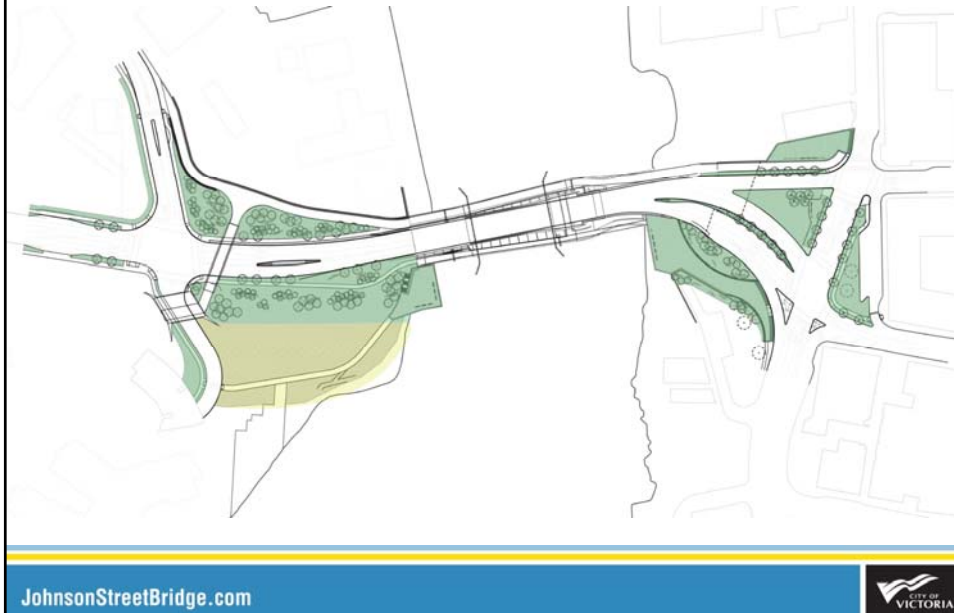
Background

- Johnson Street Bridge Replacement Project impacts a diverse range of stakeholders
- In addition to a new bridge, the project also includes revitalized public spaces, improved connectivity for pedestrians and cyclists, and three new plaza spaces

JohnsonStreetBridge.com



Public Realm Areas



Background

- These spaces include a new downtown trailhead for the Galloping Goose, E&N, and Lochside regional trails
- Improved accessible connectivity to the multi-use trail and pedestrian pathway
- New spaces to enjoy downtown and views of the harbour

Public Realm

Current

New Bridge



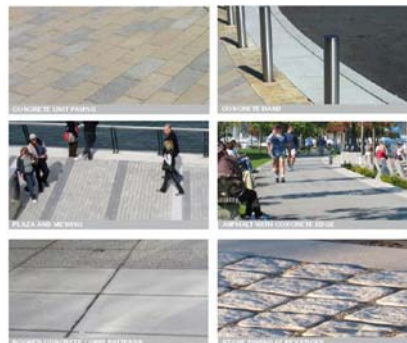
JohnsonStreetBridge.com



PCL Contract

PCL's contract includes approximately \$500,000 for hard surfaces including:

- pavers for plazas
- multi-use pathways
- sidewalks
- walls
- stairs



JohnsonStreetBridge.com



Cash Allowance

A cash allowance of \$880,00 is also included for:

- Lighting
- Plantings and trees
- Benches
- Bike racks
- Trash bins
- Recycling receptacles
- Drinking fountains
- Finishings for wall surfaces



JohnsonStreetBridge.com



Public Input

- Prior to the contract award, more than 200 people provided input on public realm elements through two workshops in the summer of 2012
- More than 100 surveys were also received
- Letters were received from the Victoria West and Downtown neighbourhood associations and Greater Victoria Cycling Coalition

JohnsonStreetBridge.com



What We Heard

- A desire for enhanced walkability and cycling connections
- Support for opportunities for social gathering through community events, festivals, and entertainment
- Opportunities to sit and view the harbour were identified as important
- A desire for improved safety and traffic calming
- The bridge approaches as gateways to Victoria West and Downtown neighbourhoods

JohnsonStreetBridge.com



What We Heard

- Investing in landscaping
- Plaza amenities
- Pathway lighting
- Pedestrian and cyclist safety

JohnsonStreetBridge.com



What We Heard

As a result of public feedback, several changes were made to landscaping plans included in the contract:

- Additional sidewalk and pedestrian crossings
- Plaza amenities
- More traffic calming measures
- Naturalized landscaping including exposed bedrock

JohnsonStreetBridge.com



Responses to What We Heard

- 1) Medians for traffic calming
- 2) Way-finding signage
- 3) Additional crosswalks at Harbour and Esquimalt Roads
- 4) South Harbour Road reduced to two narrow lanes
- 5) Sidewalk added on south side of Esquimalt Road
- 6) Plaza space designed for harbour viewing
- 7) Ensure future connection to David Foster Way
- 8) Enhanced crossings for pedestrians and cyclists
- 9) Cyclist left turn lane to access multi-use trail
- 10) Maintain 30km/h in bridge area



JohnsonStreetBridge.com



Earlier Engagement

- Due to time and process limitations, what was not included in earlier engagement was the opportunity to inform the urban design and how the space would feel and be used



JohnsonStreetBridge.com



Public Art

- In addition to public realm aspects the project currently identifies \$250,000 for public art
- A section of steel from the rail bridge has been set aside for a future art piece
- In September 2013, Council directed staff to bring forward more information on the public realm prior to Council making any further decisions regarding public art

JohnsonStreetBridge.com



North East Plaza



NORTH EAST PLAZA

JohnsonStreetBridge.com



South East Plaza



SOUTH EAST PLAZA LOOKING WEST

JohnsonStreetBridge.com



South East Plaza



SOUTH EAST PLAZA LOOKING EAST

JohnsonStreetBridge.com



Downtown

North East Plaza:

- New trailhead for Galloping Goose, Lochside, and E&N Trails
- New bike racks, benches, drinking fountain
- Enhanced crossings for pedestrians and cyclists

South East Plaza:

- Connection to new bridge's pedestrian pathway and future David Foster Way
- Opportunities for harbour viewing
- Benches and wall seating



JohnsonStreetBridge.com



West Plaza



WEST PLAZA

JohnsonStreetBridge.com



Victoria West

- New crossings and connections for pedestrians and cyclists
- Plaza adjacent to future waterfront green space
- Opportunities for harbour viewing
- Bench seating in plaza
- Protected rail corridor



JohnsonStreetBridge.com



Budget and Timeline

- New bridge is expected to open in the spring of 2017
- Final project completion, including removal of the rail span and completion of all landscaping and plazas by fall 2017
- Total project budget is \$96.8 million

JohnsonStreetBridge.com



Public Realm Budget

- Bids received by PCL for public realm work beyond the hardscape surfaces indicate there is currently not enough budget available to complete the approved landscape plan.

JohnsonStreetBridge.com



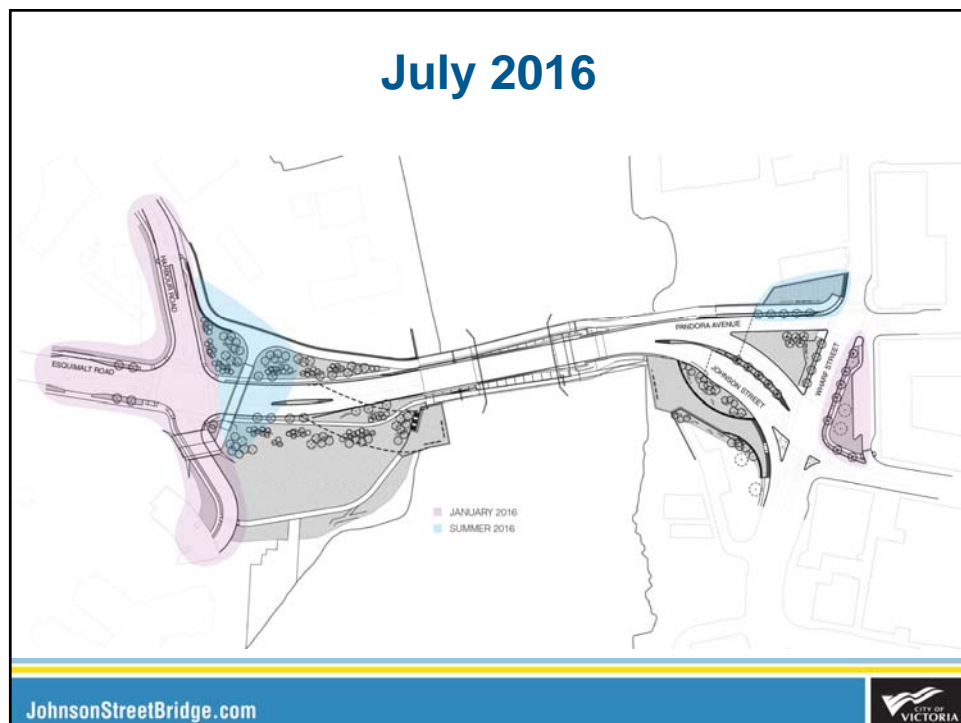
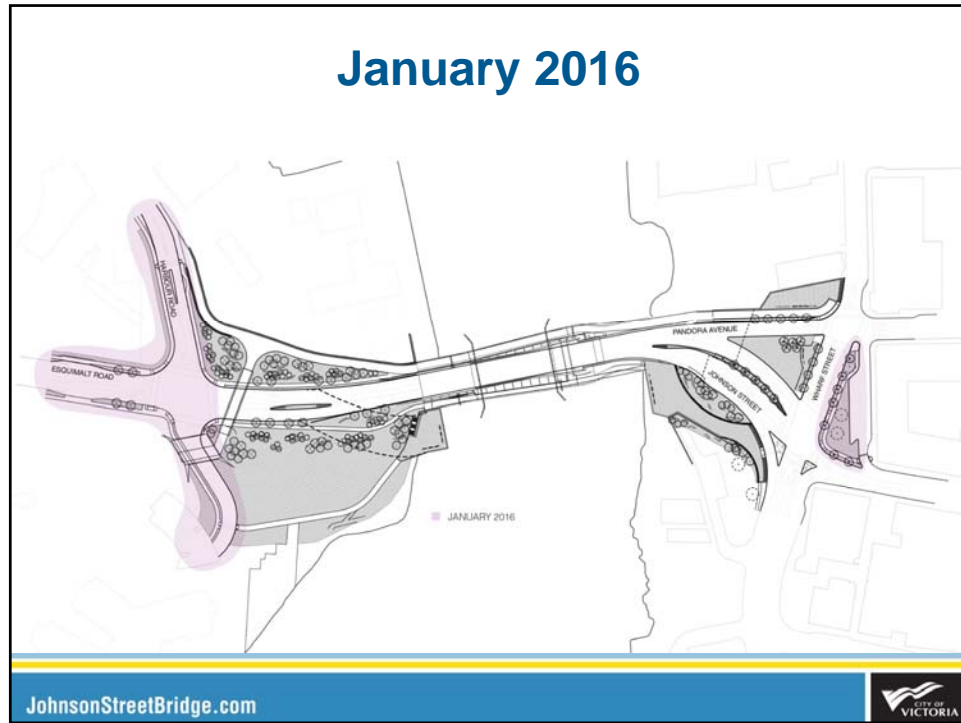
Public Realm Budget

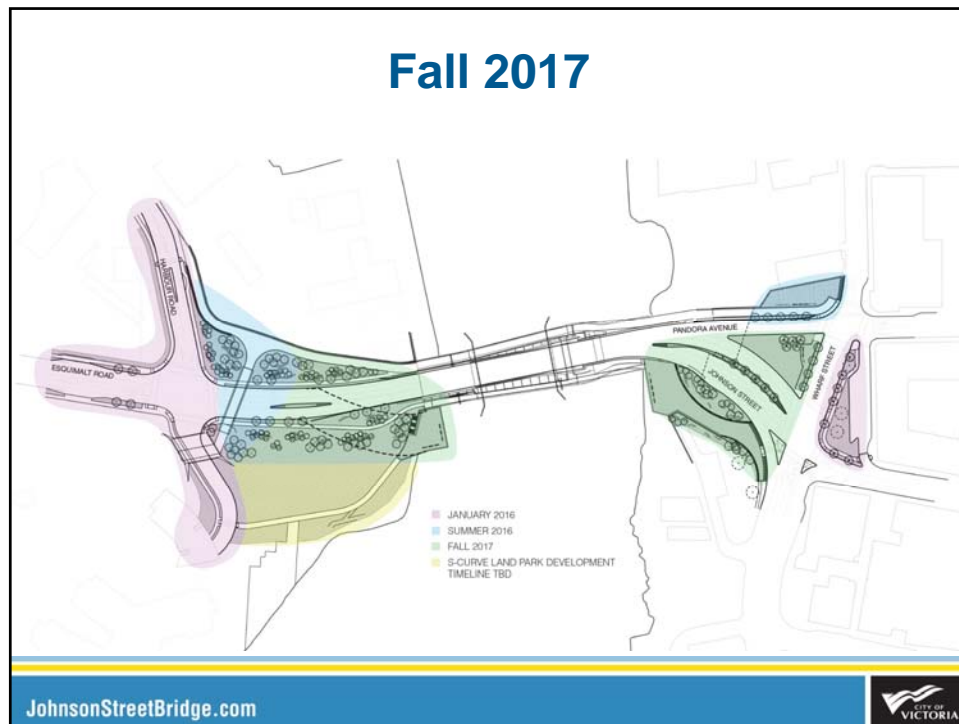
Public Realm Item	Funding Source	
Landscaping and furnishings: Trees, shrubs, benches, trash and recycling	Cash Allowance	\$880,000
Hardscaping: sidewalks, pathways, walls, plaza pavers, stairs	PCL Contract	\$500,000
		\$1,380,000

To date, \$345,000 has been allocated in the cash allowance for all work and fixtures for lighting, leaving a remaining total of \$500,000 to complete all remaining landscaping and furnishing.

Public Realm

- A significant level of work related to the roads, intersections, and sidewalks has been completed or is nearing completion. Changes to these elements would result in significant costs.
- All other elements remain somewhat flexible if Council desires
- Upon agreement of a public realm approach, staff have identified to complete some of the work in phases





Recommended Option

Urban Design Approach with Budget to be determined

- Engage the public on design and future use of space
- Work within space parameters of completed hardscaping and road alignments
- Host a design charrette with community
- Develop budget options

Timeline

- Engagement with community: October 2015
- Report back to Council: November 2015

JohnsonStreetBridge.com



Recommendation

- Direct staff to proceed with public engagement on urban design of public realm in the fall 2015
- Report back to Council with a public realm design and corresponding budget options

JohnsonStreetBridge.com



Thank You

JohnsonStreetBridge.com

