



Naturalized Playground



Explore

Discover





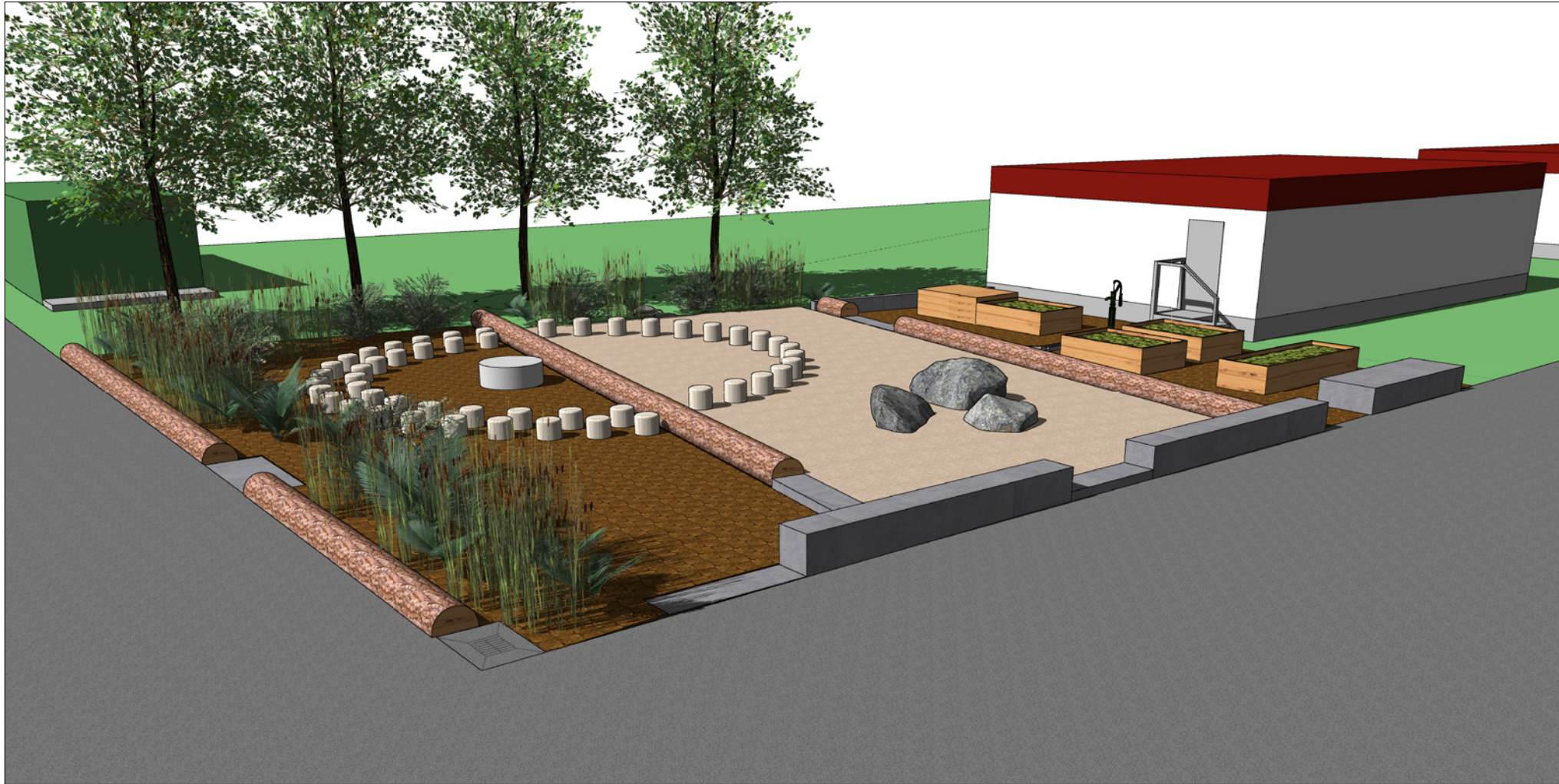
Nurture



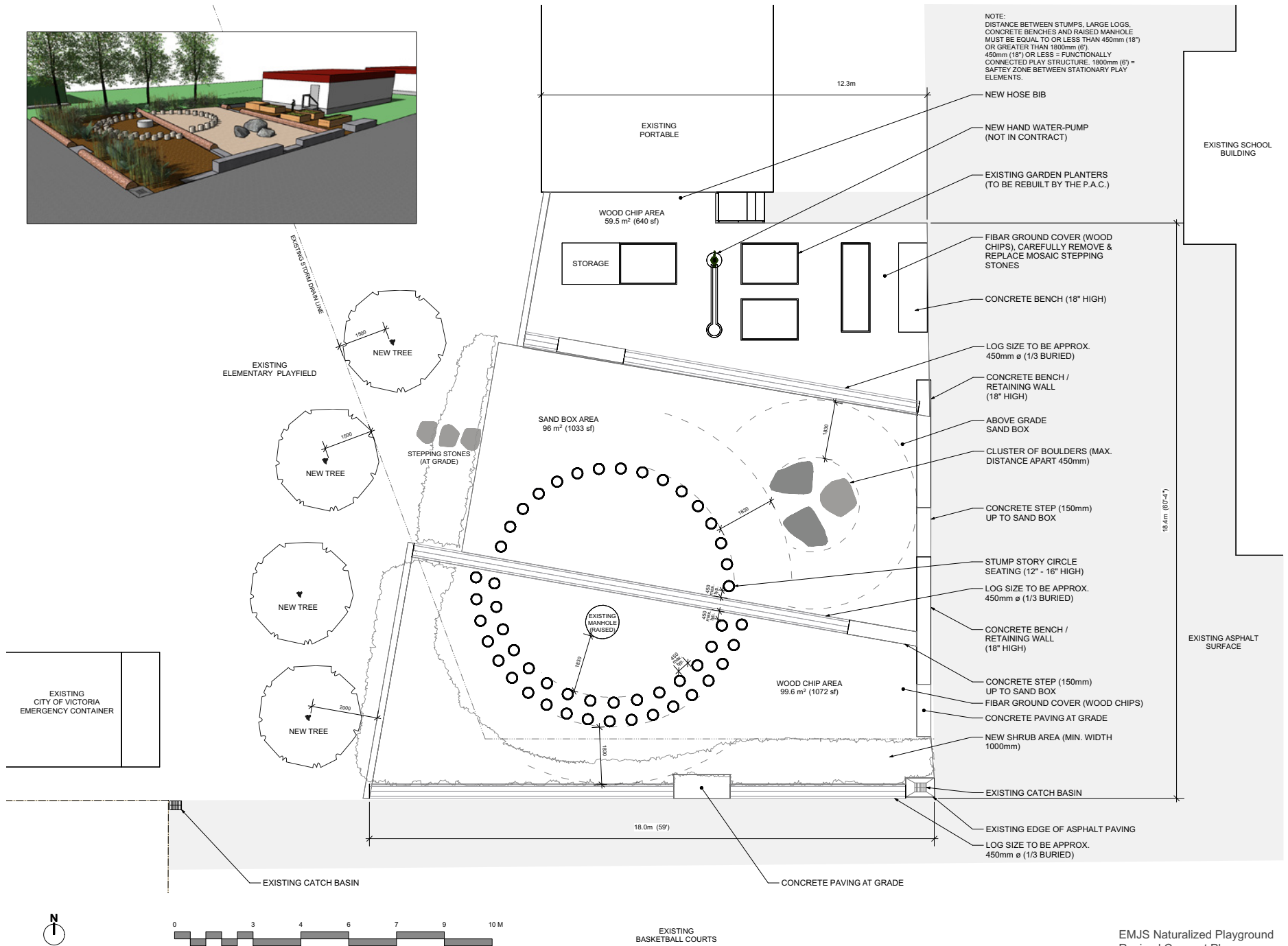
Existing Site



Proposed Design

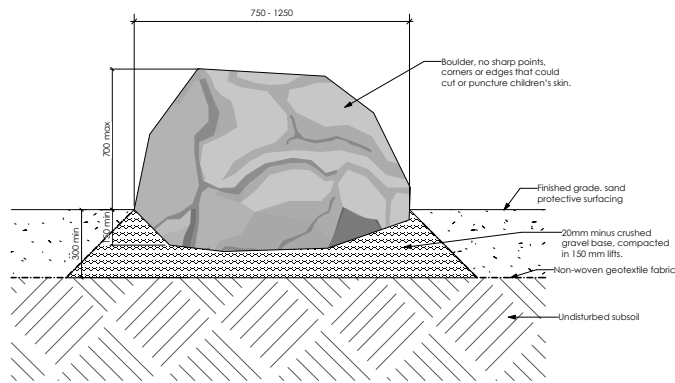


EMJS Naturalized Playground
Revised Concept View
February 6, 2015



CSA / ASTM SAFETY COMPLIANCE NOTES:

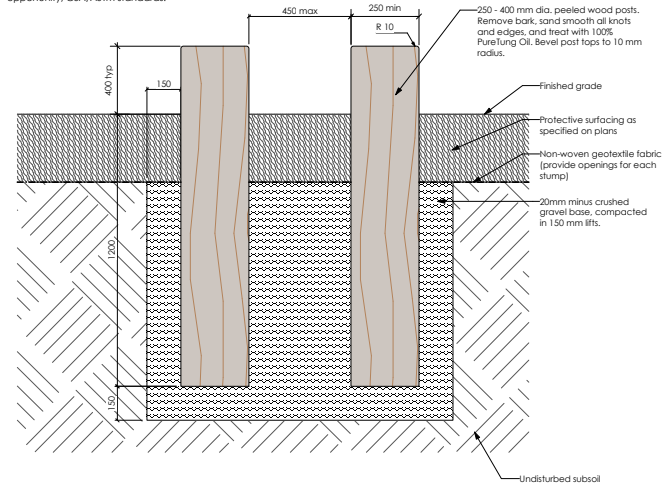
1. Provide protective surfacing area that extended 1.8 m in all directions from edges of equipment.
2. Play elements that are functionally linked or less may share a protective surfacing area.
3. Climbing/stepping forms must be no greater than 450 mm apart horizontally to be functionally linked (450 mm measured diagonally from top edge to top edge if height varies).
4. Maximum height to highest point of boulder to be 700 mm.
5. Ensure no gaps/ openings will create hand or head entrapment opportunity, CSA/ASTM standards.



2 Climbing Rock
Scale: 1:10

CSA / ASTM SAFETY COMPLIANCE NOTES:

1. Provide protective surfacing area that extended 1.8 m in all directions from edges of equipment.
2. Play elements that are functionally linked or less may share a protective surfacing area.
3. Climbing/stepping forms must be no greater than 450 mm apart horizontally to be functionally linked (450 mm measured diagonally from top edge to top edge if height varies).
4. Maximum height to highest point of stump/log to be 400 mm.
5. Ensure no gaps/ openings will create hand or head entrapment opportunity, CSA/ASTM standards.



3 Sitting Stumps
Scale: 1:10

rev no	description	date
4	review	15.05.21
1	Addendum #1	15.05.19
2	Tender	15.04.16
1	Tender Review	15.03.26



client
Margaret Jenkins
Elementary School
1824 Fairfield Road
VICTORIA, BC

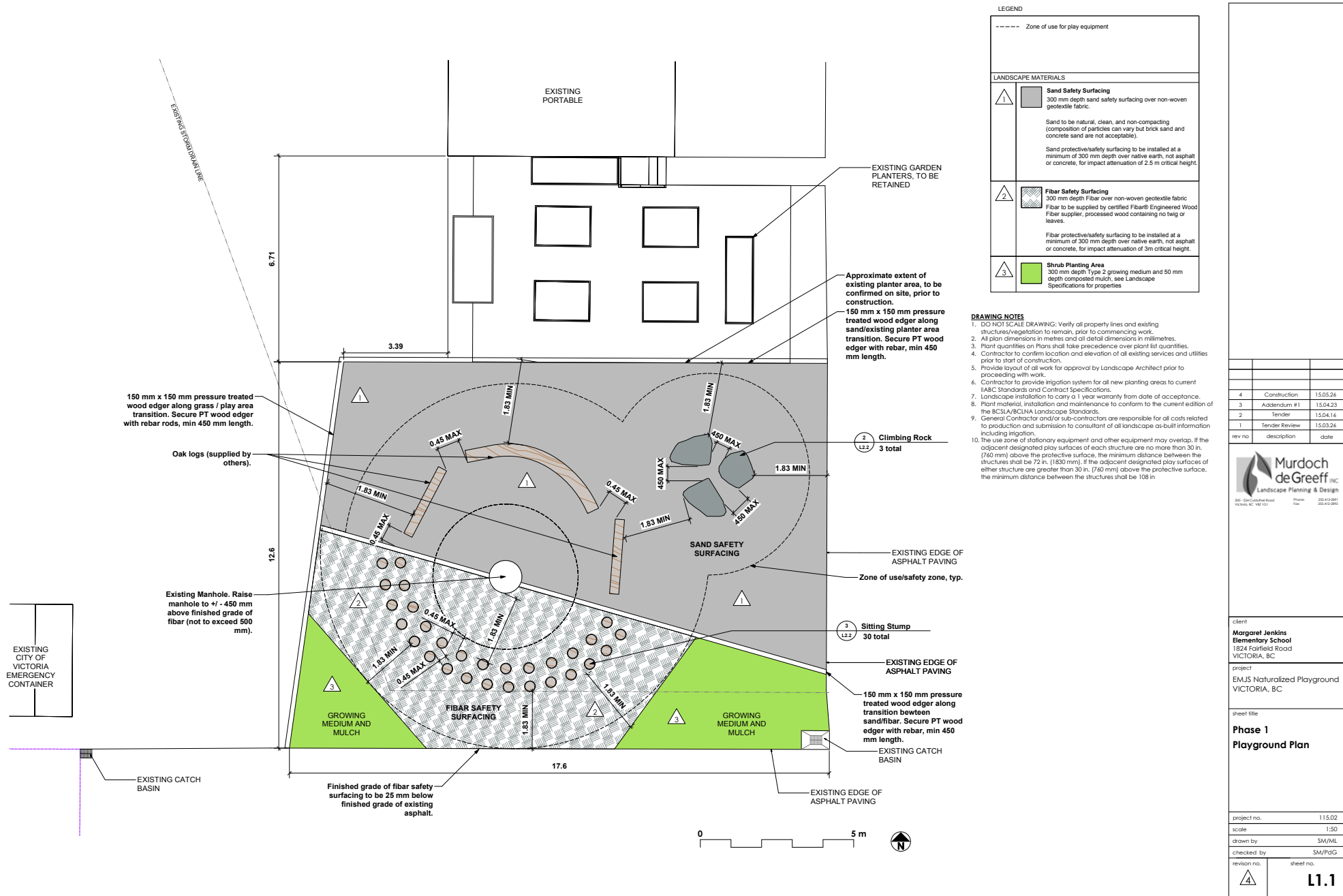
project
EMJS Naturalized Playground
VICTORIA, BC

sheet title
Landscape Details

project no.	115.02
scale	as noted
drawn by	SM/ML
checked by	SM/PdG
revision no.	sheet no.

4 **L2.2**

Phase One

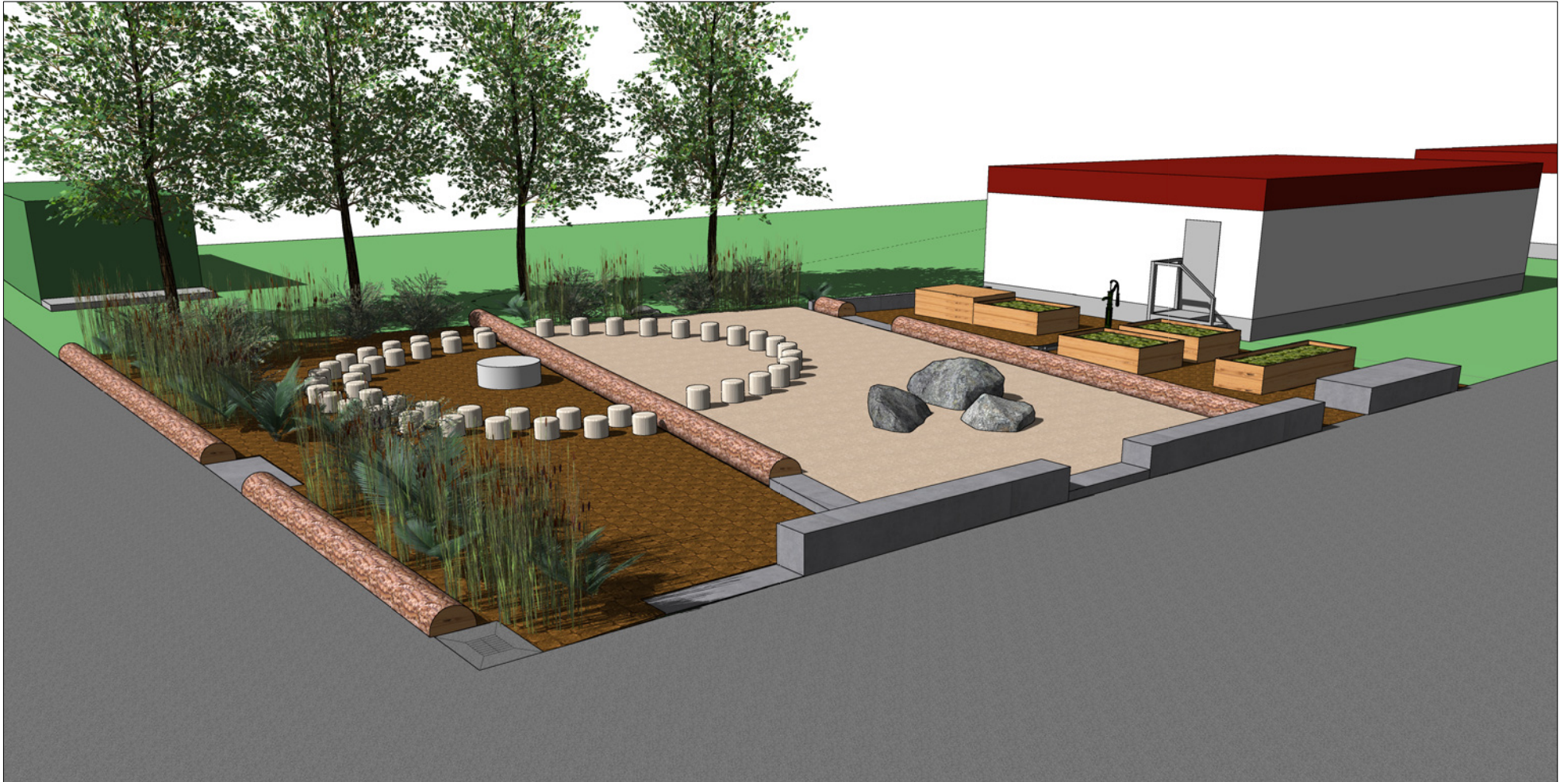


Phase One



Phase Two

conditional upon further funding



EMJS Naturalized Playground
Revised Concept View
February 6, 2015