

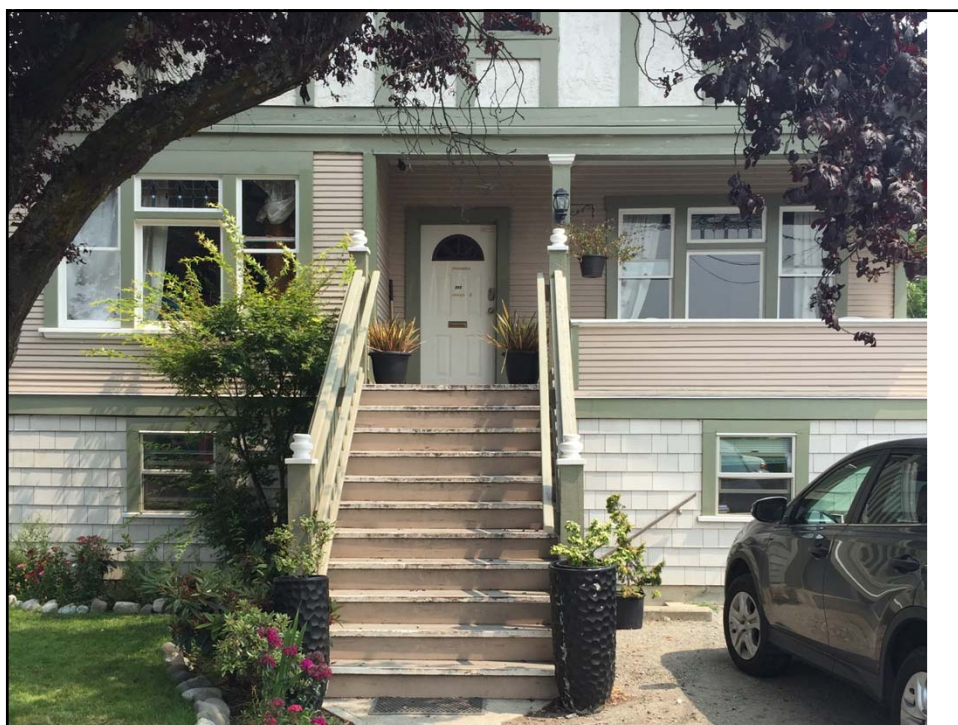
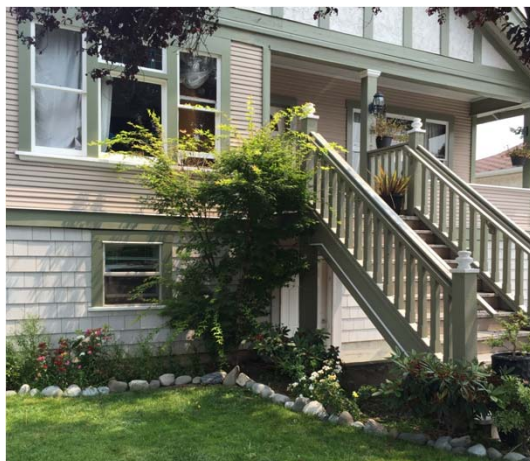
Mayor and Council
City of Victoria
July 15th, 2015



Since 2000, Umbrella's Peer Outreach Program has provided a range of timely, no barrier supports to people in the Greater Victoria area. Each year we connect with about 750 new clients, men and women for whom substance use has become a problem.



Since October 2015, Umbrella has provided operational support to Foundation House, 512 Cecilia Street in the City of Victoria



On April 1st, 2015, we assumed full control of this 11 bed supportive recovery house for men.

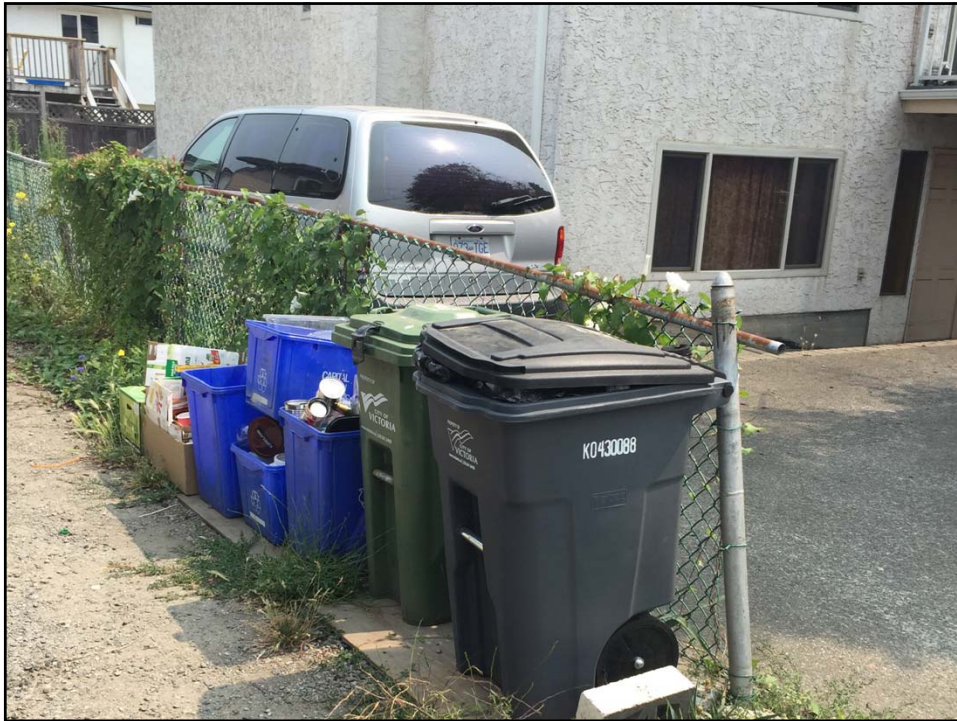
To our residents, this is home.

While here, men can work, or go to school, but they all must make a major commitment to working on their recovery.

There is no limit to the length of stay. Men leave only when they are ready to move on to the next chapter in their lives.

City of Victoria Strategic Plan Objectives

- Innovate and lead
- Engage and empower the community
- Facilitate social inclusion and community wellness
- Enhance and steward public spaces, green spaces, and food systems







We believe that people will live up, or down, to our expectations of them. Society too easily turns a cold shoulder to those who struggle.

When provided with a safe and caring environment, a group of men from very different backgrounds, some very young, some older, some First Nations, can support one another to live in harmony. It's affirming and rewarding for all.

We want Foundation House to be a source of pride to the residents, the neighbourhood, and the community as a whole.

We've been there. We can help.

Umbrella Society for Addictions and Mental Health
901 Kings Road
Victoria, BC V8T 1W5
250.380.0595
wecanhelp@umbrellasociety.ca
www.umbrellasociety.ca