



Governance and Priorities Committee Report

For the Meeting of March 12, 2015

To: Governance and Priorities Committee **Date:** February 16, 2015
From: Julie MacDougall, Acting Director, Parks and Recreation
Subject: Clawthorpe Park Playground Improvements

Executive Summary

The purpose of this report is to provide an update on the results of the public engagement and to outline the next steps for Clawthorpe Park playground and park renewal project.

Clawthorpe Park is a small neighbourhood park, one acre in size, in the Oaklands neighbourhood. Bowker Creek runs underground along the north-western edge of the park. The park features an open grass area, a playground with benches, a picnic table and several mature trees along the perimeter.

The 2015 financial plan proposes upgrading Clawthorpe Park to replace aging play equipment and to better meet the needs of the community.

In 2013, a petition from area residents was received requesting that the playground features be upgraded. In the fall of 2014, nearby residents and the general public were invited to participate in an open house and online survey to share what kind of playground equipment they would prefer, along with other park improvements. 15 people attend the open house, 38 surveys were completed online and one letter was received. Items noted as popular included the large grassy area, open field and large trees. Least liked was that there was limited play value for children under the age of five. Popular types of play included climbing, swinging, sliding and spinning and some interest for social/imaginative play and activity panels. A desire to celebrate or interpret Bowker Creek was also indicated.

A conceptual plan that responds to the results of the public engagement has been prepared for the park and play area upgrade. The future improvements will include:

- Inclusion of a natural play feature
- Retention of the large open grassy area
- Slightly moving the play equipment area to accommodate the large trees
- Creating a raised landscape berm to provide a greater sense of separation from busy North Dairy Avenue
- Addition of bicycle parking adjacent to the play area

A budget request of \$107,000 for the play area and park upgrade is included in the 2015 Financial Plan for Council's consideration. Construction of this play area upgrade would commence in June 2015. Construction is expected to take eight weeks.

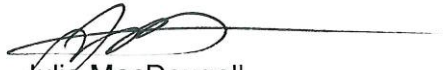
Recommendation:

That Council receive this report for information.

Respectfully submitted



Leigh Sifton
Manager, Parks Planning and Design



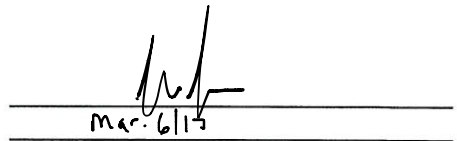
Julie MacDougall
Acting Director, Parks and Recreation



Katie Hamilton
Director, Citizen Engagement and Strategic Planning

Report accepted and recommended by the City Manager:

Date:


Mar. 6/15

PURPOSE

The purpose of this report is to provide an update on the results of the public engagement and to outline the next steps for Clawthorpe Park playground and park renewal project.

BACKGROUND

Clawthorpe Park is a small neighbourhood park, one acre in size, in the Oaklands neighbourhood, near Hillside Mall. Bowker Creek runs underground along the north-western edge of the park within the Clawthorpe Avenue road right-of-way. The park features an open grass area, a playground with benches, a picnic table and several mature trees along the perimeter. See Appendix A for a site map and photos.

In 2013, a petition from area residents was received requesting that the playground features be upgraded as the play area had lost its appeal.

The 2015 financial plan proposes upgrading Clawthorpe Park to replace aging play equipment and to better meet the needs of the community. The current play equipment was installed in 1996. Play equipment manufacturers recommend a 10-15 year replacement cycle. At the same time as play equipment replacement, the City considers all park users and upgrades other site amenities when possible. Items outside of the budget are considered within future year capital planning.

Citizen Engagement

In the fall of 2014, nearby residents and the general public were invited to participate in an open house and an online survey. Participants were asked to specifically share what kind of playground equipment they would prefer, along with other park improvements. Children were encouraged to participate. 15 people attended the open house on October 22 and 38 surveys were completed online. One letter was received. A summary of what we heard is below.

General comments related to the playground and its existing features:

- More kids in the neighbourhood now
- Is an old playground that has lost its play value
- Interest in celebrating Bowker Creek, possible interpretive signage or features celebrating the natural area
- Suggestion to take the park upgrade proposal to the Bowker Creek Initiative Steering Committee

When asked about popular current park features:

- Large, grassy, open field, the big trees
- Swings, sandbox, climbing structure and monkey bars

When asked about current features that are least liked:

- Very few options for kids under 5

When asked about future playground equipment:

- Open House Dotmocracy Results: Most popular play features included climbing, equipment, swings, spinning equipment and natural play areas. Other play features selected included slides, social/imaginative play and activity panels
- Survey Results: The most popular play features included climbing, swings, social /imaginative play, natural play areas, slides, activity panels, spinning equipment

For complete engagement details, please refer to Appendix B: Clawthorpe Park Playground Improvements: Engagement Summary Report.

Respondent turnout figures for playground upgrade consultations are historically low however this does not reflect park use following play area upgrades. We find consistently that the number of users increases significantly following construction completion.

NEXT STEPS

A conceptual plan (Appendix C) that responds to the results of the public engagement has been prepared for the park and play area upgrade. The future improvements will include:

- Inclusion of a natural play feature
- Retention of the large open grassy area
- Slightly moving the play equipment area to accommodate the large trees
- Creating a raised landscape berm to provide a greater sense of separation from busy North Dairy Avenue
- Addition of bicycle parking adjacent to the play area

Given the proximity to other nearby neighbourhood parks and the types of play equipment located in those parks; comments from the public regarding the ages of children visiting the park; and, the amount of area available for the playground, the new play equipment will be targeted to younger children (18 months to 5 years).

New equipment will provide opportunities for swinging and sliding. However, due to the available size of the play area, equipment can be accommodated for either climbing or spinning, but not both. Due to the noted popularity of climbing during the public engagement process, of the two, it is proposed that new climbing equipment be provided.

A proposed location for an interpretive element related to Bowker Creek is included in the concept design. Design and opportunities to cost-share will be discussed further with the Bowker Creek Initiative Steering Committee as well as Oaklands Community Association.

A budget request of \$107,000 for the play area and park upgrade is included in the 2015 Financial Plan for Council's consideration. Construction of this play area upgrade would commence in June 2015. Construction is expected to take eight weeks such that the new playground and upgrades would be complete for September.

RECOMMENDATIONS

That Council receive this report for information.

APPENDICES

Appendix A: Site Map and Photos
Appendix B: Engagement Summary Report
Appendix C: Concept Plan

Appendix A: Site Map and Photos





ENGAGEMENT SUMMARY REPORT

Clawthorpe Park Playground Improvements

OCTOBER 9, 2014 – NOVEMBER 30, 2014

Table of Contents

Executive Summary.....	3
Part 1: Introduction, Engagement Objectives and Process Design.....	4
Part 2: Communications Tools	5
Part 3: Engagement Feedback Summary	6
Online survey	6
Open House.....	6
Written Submissions	6
Part 4: Next Steps.....	11
Part 5: Engagement Data	12
Open House.....	13
Online survey	14
Written Submissions	25

FOR MORE INFORMATION:

City of Victoria

Executive Summary

The City will be upgrading the Clawthorpe Park playground to replace aging playground equipment and to better meet the needs of the community. Clawthorpe Park is a small neighbourhood park in the Oaklands neighbourhood, near the Saanich municipal border.

In the fall of 2014, nearby residents and the general public were invited to participate in an open house and an online survey. Participants were asked to specifically share what kind of playground equipment they would prefer, along with other park improvements. Children were encouraged to participate.

15 people attended the open house on October 22 and 38 surveys were completed online. One letter was received. These suggested improvements will be considered as part of the budgeting process in early 2015. When funding is approved, construction plans will be made.

What We Heard

General

- More kids in the neighbourhood now
- Is an old playground that has lost its play value
- Interest in celebrating Bowker Creek, possible interpretive signage or features celebrating the natural area
- Suggestion to take the park upgrade proposal to the Bowker Creek Initiative Steering Committee

Current park features that are popular include:

- Large, grassy, open field, the big trees
- Swings, sandbox, climbing structure and monkey bars

When asked about current features that are least liked:

- Very few options for kids under 5

When asked about future playground equipment:

Open House

- Dotmocracy Results
 - Most popular: Climbing equipment, swings, spinning equipment, natural play areas
 - Followed by: slides, social/imagination play/activity panels

Survey

- Climbing, swings, social /imagination play, natural play areas, slides, activity panels, spinning equipment

The above feedback will be considered as the playground improvements are designed.

Part 1: Introduction, Engagement Objectives and Process Design

Introduction

The playground in Clawthorpe Park is being upgraded to replace aging playground equipment and to better meet the needs of the community.

Clawthorpe Park is a small neighbourhood park located at 1619 Clawthorpe Avenue, fronting North Dairy Road. It is in the Oaklands neighbourhood, near the Saanich municipal border. Bowker Creek runs underground along the northern and western edges of the park.

The park currently features an open grass area, a playground with benches, a picnic table and several mature trees along the perimeter. The park is tailored towards younger children and serves many local daycares. As surrounding parks are designed for older children the Clawthorpe playground improvements will be designed with smaller children in mind.

Site limitations include the small size of the park, five large trees that use much of the available space, the location within a neighbourhood area and the need to maintain visibility into the park.

Engagement Objectives

The goals of the engagement program were to:

- Raise awareness about future improvement opportunities for Clawthorpe Park.
- Seek community input on the potential playground improvements and general park improvements.

Process Design

A targeted community engagement program was developed to solicit input from local residents most affected by potential changes to Clawthorpe Park. The engagement program was tailored to residents living closest to the park, but print and social media was also used to garner broader input.

The community was asked to share what kind of playground equipment they would prefer, along with other park improvements. As children are the main visitors, they were also encouraged to participate by drawing their favourite playground equipment.

The following communications tools were used to create awareness of this engagement opportunity:

- Website information: Have Your Say, latest News, Events Calendar
- Public Service Announcement
- Community Association Update: Oaklands
- Mail out to homes
- Posters
- Print ads: TC, Victoria News
- Social Media: regular and promoted posts

Feedback was collected via:

- An open house
- Online survey
- Written submissions

Part 2: Communications Tools

The following communications tools were used to create awareness of this engagement opportunity:

- Website information: Have Your Say, Latest News, Events Calendar
- Public Service Announcement
- Mail out to homes (875)
- Posters distributed through the neighbourhood
- Print ads: TC, Victoria News (October 3-11)
- Social Media: regular and promoted posts

A few examples of these tools have been included here:

City of Victoria - Local Government created a link
 Posted by [Michelle Jones](#) on [November 25, 14](#)

Live in Oaklands and love parks? Share your ideas about Clawthorpe Park as City staff plan upgrades to the playground in order to better meet the needs of the community. Please complete the survey before Sunday, Nov 30. Thanks!
<http://haveyoursay.victoria.com/project/help-us-improve-clawthorpe-park-playground>

Have Your Say, Vic
 Find out about current projects, join in discussions, and take surveys that will help shape the future of our city.

SHARE your feedback **POST your ideas** **JOIN**

Have Your Say Victoria
haveyoursay.victoria.ca

Clawthorpe Park currently features an open grass area, a playground with benches, a picnic table, and several mature trees along the perimeter. In 2015, the City of Victoria will upgrade the playground to better meet the needs of the community.

3,926 people reached **Not Boosted**

Like Comment Share **1 Share**

Adnan Monarib, Chris Mursiac, Jeff Hendrix and 9 others like this

Avi Lambert Good to see **1** November 25 at 5:42pm

Jon Bos Love this post **1** November 25 at 10:30pm

OPEN HOUSE
Clawthorpe Park Playground

Clawthorpe Park is a small neighbourhood park located at 1619 Clawthorpe Avenue, fronting North Dairy Road. The park currently features an open grass area, a playground with benches, a picnic table, and several mature trees along the perimeter. In 2015, the City of Victoria will upgrade the playground to better meet the needs of the community.

Issues
 In its current state, the challenges to maintain this playground include:

- Existing play equipment and safety zones that do not meet CSA safety standards
- Existing concrete surfacing that is non-compliant for wheelchair accessibility
- Outdated, unimpressive and worn play equipment

Opportunities

- Install new equipment with a variety of play opportunities for children aged 18 months to 12 years
- Identify suitable areas for new equipment that provide space to play equipment

Next Steps
 Sharing your ideas will help inform the future park improvements. Community input will be gathered on the City of Victoria website. The playground improvements are expected to be completed next summer.

Other Park Amenities

© 2014 City of Victoria

Public Service Announcement

CITY OF VICTORIA

WANTED: Children to Help Us Improve Clawthorpe Park Playground

Date: Thursday, October 16, 2014 For Immediate Release

VICTORIA, BC — Children — bring your parents to an open house next Wednesday to learn more and "show and tell" us what type of equipment you'd like to see included at the Clawthorpe Park playground. Located on Clawthorpe Avenue fronting North Dairy Road, this small neighbourhood park currently has an open grass area, a playground with benches, a picnic table, and several mature trees along the perimeter.

Next year, the City of Victoria will upgrade the aging playground equipment to meet national safety standards and to better meet the needs of the community.

Drop by an open house on Wednesday, October 22, 2014 from 4 p.m. to 7 p.m. at the Oaklands Elementary School library at 2907 Belmont Avenue. Registration is not required. Refreshments will be served.

Take the opportunity to view displays and place stickers next to your favourite play equipment, share your vision in a drawing, meet Parks planners and ask questions, suggest park improvements for the enjoyment of the community, and complete a short survey.

Can't make it to the open house? You can view display panels and provide input by completing the survey online from October 22 to November 30, 2014. For more information, visit www.vi.bca.ca.

— 30 —

Part 3: Engagement Channels

Open House

15 people attended the Open House on Wednesday, October 22 from 4 p.m. to 7 p.m. at Oaklands Elementary School. Kids and adults were invited to drop by to share what type of playground equipment they'd like to see included.

Display boards were available that offered ideas about playground features that could be included in the upgrades. 'Dotmocracy', voting with dots or stickers, was used to allow both kids and adults to share what playground equipment they liked best. Kids were given large dots and adults were given small dots. Feedback from kids was weighted more heavily than feedback from parents. Children were engaged through an interactive activity where they were asked to draw their favourite equipment. Surveys were also completed at this event.

What We Heard:

Dotmocracy Results:

Type of Equipment	Kids	Adults	Total
Climbing	4 x2 = 8	1	9
Swings	4x2= 8	1	9
Spinning	4 x2 = 8	1	9
Natural Play Areas	2 x2= 4	5	9
Slides	2 x2= 4	4	8
Social/Imagination Play/Activity Panels	3x2= 6	2	8
Spring Seesaws	2 x2= 4	0	4

Drawing Results:

- Images included:
 - Swings, spinning equipment and other imaginative ideas

Online Survey

38 surveys were completed online.

What We Heard:

Question 1: Where do you live?

- 63% lived within a five minute walk from the park.
- 22% lived within Oaklands, but further than a five minute walk.
- 1 participant was from Saanich.

Question 2: What is your age?

- 47% were 30-39
- 13% were 50-59
- 3% were 12 or younger

Question 3: How often do you visit Clawthorpe Park with children under the age of 12?

- 34%: rarely
- 21%: never
- 18%: monthly
- 16%: bi-weekly
- 11%: daily

Question 4: How often do you visit Clawthorpe Park with children under the age of five years?

- 42%: never
- 29%: rarely
- 13%: daily
- 8%: bi-weekly
- 8%: monthly

Question 5: What features do you like best about the current playground?

Location

- Accessible
 - Good access to both Victoria and Saanich neighbourhoods.
 - lane access
 - access path
 - Space/flat, accessible/easy parking
 - The roundabout
- Relatively peaceful location, away from the high volume streets.

Natural Spaces

- Large, grassy, open field. (6)
- The big tree is a great for nature exploration (3)
- Natural green space

Equipment

- The kids enjoy the swings (kids and toddler).(6)
- Sandbox (3)
- The kids like the climbing structure, but is worn out and not suitable for toddlers (2)
- monkey bars (2)
- curly slide
- the swinging ring
- the ramp
- the whole playground is not toddler friendly i.e. children under 5.
- Create playground equipment that is accessible to young children

General

- I believe that all park space for children should be revisited and enhanced. It is important for children to have a safe, unstructured, outdoor play area near their homes.

Question 6: What features do you like least about the current playground?

Design/ Park features

- No unique sense of place...does not capitalize on or reflect the context and surroundings.
- The tunnel has been removed. No one really seems to go there anymore.
- dark
- Open grassy area: not much to explore there.
- Sand surface
- Grass currently contains many thorny plants.
- Lack of sensory experience
- The pond

Accessibility

- Path/accessibility for wheelchairs/disabled.

Equipment

- the slide
- the metal plate screwed into the center of the play structure. kids trip on it

Maintenance

- Not cleared of leaves often enough

Kid Friendliness

- Very few options for little kids (under 2-5)- ie: would like to see more things lower to the ground for climbing on (4)
- My 5 year old is bored there. We live in the neighbourhood and rarely frequent this park, which is a shame.
- It is an old playground that has lost its play value.
- There are more younger children in the neighbourhood as the community transitions from seniors to young families owing to the affordability of the local area relative to the rest of the city. The playground needs expansion given that there are more children living in the immediate area.
- I visit this park daily and never see any children using it. There is an excellent park and playground close by on Stroud, which is also rarely used, and yet was just upgraded in a huge, long, and obviously expensive project. I feel that the city should save the open space for dogs owners who will use it frequently.

Question 7: What value do you place on the following play features for the Clawthorpe Park playground?
The play features that were most valued are listed here.

- 1) Climbing
- 2) Swings
- 3) Social imaginative
- 4) Natural play areas
- 5) Slides
- 6) Activity panels

Other ideas:

- Water feature and design elements and gestures to the Bowker Creek. It was once a salmon and trout bearing watercourse – see below. There are also opportunities for interpretive signs and other information. More information at: <https://www.crd.bc.ca/bowker-creek-initiative>
- The playground needs to be constructed in such a way to have slides and swings that will also serve older children. This playground needs to serve multi-age children.
- I love the adult workout elements at the BHP playground and think those would be an awesome addition to Clawthorne Park
- Easy access for bike commuters, particularly since N. Dairy is a decent bike route.
- I am not sure under which category something like monkey bars, rings, or parallel bars would fall (gymnastics equipment perhaps), but we value those very highly.

Question 8: Please provide any other ideas and comments on how we can improve Clawthorpe Park playground.

Bowker Creek Connection

- An important contextual piece that has been omitted from any of the background material is Clawthorpe Park's location within the Bowker Creek watershed, immediately adjacent to Bowker Creek. The Bowker Creek Watershed Management Plan (2003) and the Bowker Creek Blueprint (2013) – both endorsed by Victoria Council – should inform the project. There is a great opportunity to integrate the spirit and principles of the above plans into the design principles of the park renewal project. This was done successfully during renewal of Browning Park in Saanich. Carkeek Park in Seattle also does this well by integrating an environmental stewardship message through its "Salmon Slide" and other playground equipment. The Park design should also integrate with future routing options of the Bowker Creek Greenway. As Victoria's plans are further developed, I recommend that the proposal be presented to the Bowker Creek Initiative steering committee for additional comment prior to approval.
- Bowker Creek could be daylighted or partially daylighted to teach kids about the potential of Urban creek & how with the right remedial work, fish could again come up the creek.

New ideas

- Small bike trail or paths for young children to learn how to ride bicycles.
- Perhaps adding a small community garden at the east end would increase community involvement and engagement. Cheers.

Family Friendly

- The odd mom and kids there in the daytime as well, so a bigger playground with swings would be great. I think the park is in a unique setting and is a great destination or thoroughfare.
- Since Clawthorpe is relatively close to Oswald, which has a new playground, why not go for something completely different. I love the look of the "natural" play equipment in the pictures you presented. How about something like that where children's desire for climbing is met in a "natural" setting. It would give families a real different choice for outdoor playtime beyond their own backyard, instead of two relatively similar choices. Thanks for asking!
- Please maintain the large grassy area – it's really nice for open play (i.e. frisbee/soccer/bocci etc. for the 'older' kids in the neighbourhood).

Dogs

- Close for dogs: This is a very small park. It would be best if it were off limits to dogs given that there is Gosworth park 2 blocks away which actually has a large off leash. For families and children to really enjoy this environment they should not be in competition with dogs that are off leash. There are also those dog owners who do not clean up after the dogs and then our children step in the pooh. Gosworth on the other hand is a very large park that can accommodate the many functions that it now does.
- Use as dog park: I visit this park daily and never see any children using it. There is an excellent park and playground close by on Stroud, which is also rarely used, and yet was just upgraded in a huge, long, and obviously expensive project. I feel that the city should save the open space for dogs owners who will use it frequently. (3)

General

- Also not sure about plant coverage/something to buffer against North Dairy street? It's nice to have it public, but it feels quite exposed.

Correspondence

Feedback was also collected via parks@victoria.ca.

One email was submitted in response to this engagement program.

What We Heard:

The Bowker Creek Initiative Steering Committee encouraged the City to use the park redevelopment to raise public awareness about Bowker Creek and urban watersheds through the design of playground features.

The four main suggestions included:

- Selecting a theme for playground features that references wildlife or habitat,
- Installing Bowker Creek interpretive signage,
- Auditory installations that allow children to hear the creek,
- Innovative infrastructure such as a plexi-glass manhole cover to allow children to see the creek.

It was also pointed out that long term objectives for this area as found in the Bowker Creek Blueprint also include a watershed-wide greenway along the park and eventual daylighting of the creek in this area.

Part 4: Next Steps

This feedback will help shape the future playground improvements at Clawthorpe Park. The suggested playground improvements, as outlined in the GPC report, will be considered as part of the budgeting process in early 2015.

Part 5: Engagement Data

Open House: Dotmocracy



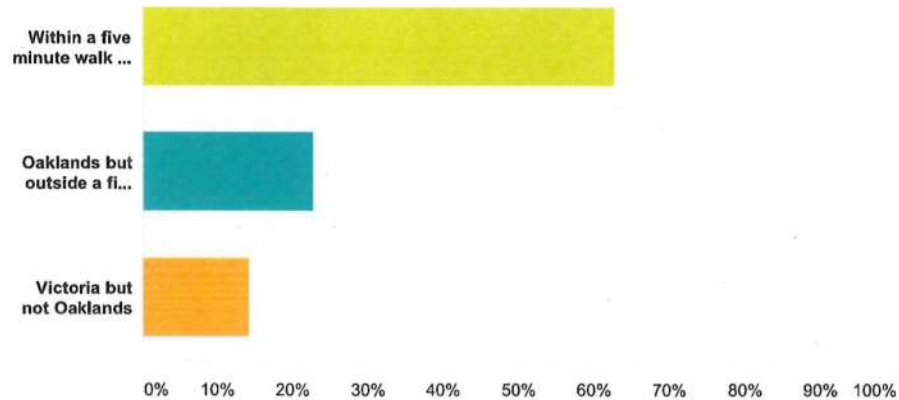
Open House: Drawings from Kids



Help Us Improve Clawthorpe Park Playground

Q1 Where do you live?

Answered: 35 Skipped: 3



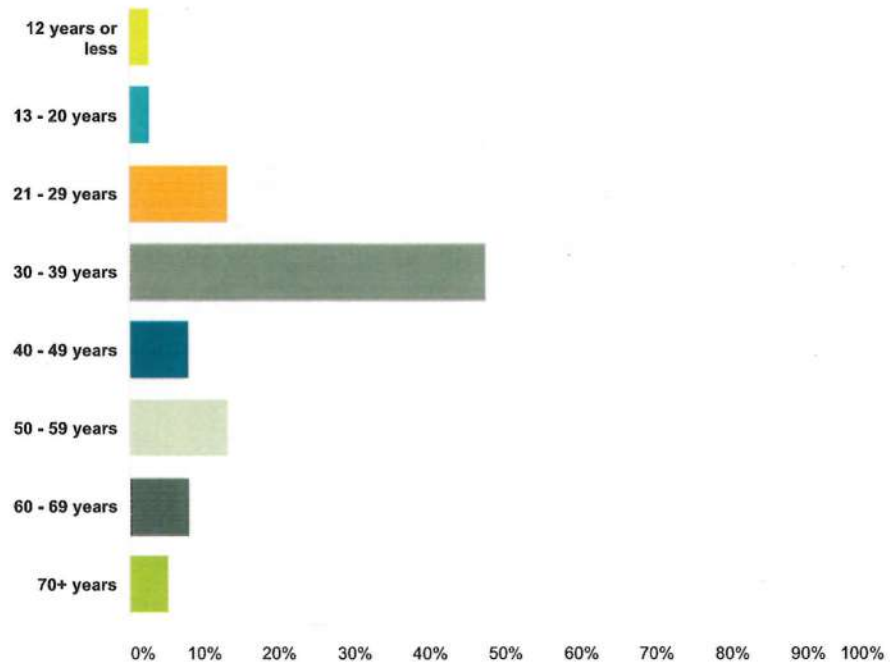
Answer Choices	Responses	
Within a five minute walk of Clawthorpe Park	62.86%	22
Oaklands but outside a five minute walk	22.86%	8
Victoria but not Oaklands	14.29%	5
Total		35

#	Other (please specify)	Date
1	Outside my back door	12/22/2014 2:26 PM
2	cedar hill and finlayson (7 min walk)	11/26/2014 10:23 AM
3	Saanich	10/22/2014 10:51 PM

Help Us Improve Clawthorpe Park Playground

Q2 What is your age?

Answered: 38 Skipped: 0

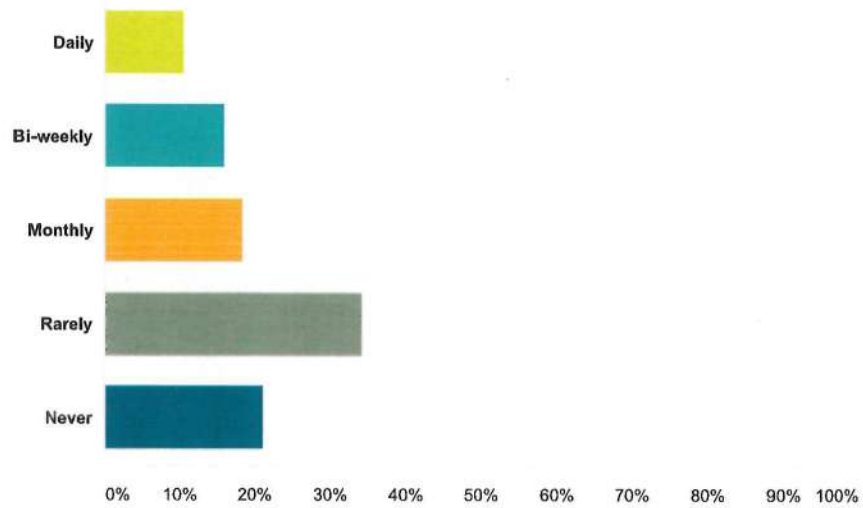


Answer Choices	Responses	
12 years or less	2.63%	1
13 - 20 years	2.63%	1
21 - 29 years	13.16%	5
30 - 39 years	47.37%	18
40 - 49 years	7.89%	3
50 - 59 years	13.16%	5
60 - 69 years	7.89%	3
70+ years	5.26%	2
Total		38

Help Us Improve Clawthorpe Park Playground

Q3 How often do you visit Clawthorpe Park with children under the age of 12 years?

Answered: 38 Skipped: 0

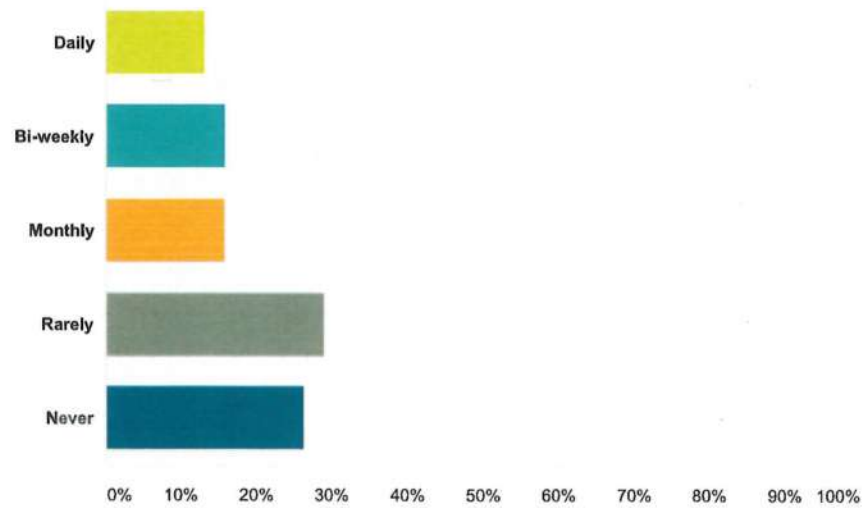


Answer Choices	Responses	
Daily	10.53%	4
Bi-weekly	15.79%	6
Monthly	18.42%	7
Rarely	34.21%	13
Never	21.05%	8
Total		38

Help Us Improve Clawthorpe Park Playground

Q4 How often do you visit Clawthorpe Park with children under the age of five years?

Answered: 38 Skipped: 0



Answer Choices	Responses	
Daily	13.16%	5
Bi-weekly	15.79%	6
Monthly	15.79%	6
Rarely	28.95%	11
Never	26.32%	10
Total		38

Help Us Improve Clawthorpe Park Playground

Q5 What features do you like best about the current playground?

Answered: 29 Skipped: 9

#	Responses	Date
1	climbing equipment Nice, simple playground! Kids like the bridge/climber	12/22/2014 2:34 PM
2	accessible Walking distance	12/22/2014 2:33 PM
3	bench trees Nice large shade trees, benches are there for parents to sit on	12/22/2014 2:31 PM
4	The play area if it was updated	12/22/2014 2:26 PM
5	Close to our house. All the grass	12/22/2014 2:14 PM
6	grassy area The open green spaces and park benches	12/22/2014 2:13 PM
7	picnic table slide slides, 2 level playground, picnic table	12/22/2014 2:11 PM
8	bench picnic table picnic table and bench	12/22/2014 2:07 PM
9	None	12/22/2014 2:05 PM
10	bench Bench for sitting on	12/22/2014 1:45 PM
11	slide swing trees Swings and slide. The trees are really a nice feature of the park	12/22/2014 1:32 PM
12	accessible climbing equipment sandbox slide swing Location, play equipment	12/22/2014 1:30 PM
13	accessible peaceful Relatively peaceful location, away from the high volume streets. Good access to both Victoria and Saanich neighbourhoods.	11/30/2014 8:42 PM
14	grassy area swing trees The large trees and grassy field. The kids enjoy the swings.	11/29/2014 1:37 AM
15	climbing equipment swing The kids like the swings and climbing.	11/28/2014 11:45 PM
16	accessible grassy area trees Natural green space, lane access, open area	11/28/2014 5:27 PM
17	grassy area Large grass area.	11/28/2014 5:20 PM
18	climbing equipment swing The only equipment that we regularly use the toddlers swing and the regular swing. The kids will also use the climbing structure but it is worn out and beat up. It is not suitable for toddlers. In fact the whole playground is not toddler friendly i.e. children under 5.	11/28/2014 12:15 PM
19	grassy area The open grass areas.	11/27/2014 7:42 AM
20	sandbox swing Sandbox Swings	11/26/2014 10:18 PM
21	good for young children I believe that all park space for children should be revisited and enhanced. It is important for children to have a safe, unstructured, outdoor play area near their homes.	11/26/2014 8:00 AM
22	accessible good for young children trees playground equipment is accessible to young children. The big tree is a great for nature exploration	11/25/2014 4:06 PM
23	grassy area Open field	11/24/2014 3:30 PM
24	grassy area trees The large space. The trees.	11/10/2014 7:16 AM
25	climbing equipment sandbox slide swing 1. swings 2. sand 3. monkey bars 4. curly slide	11/9/2014 9:11 PM
26	accessible climbing equipment sandbox swing the monkey bars the swinging rings the sand the swings the ramp	11/9/2014 8:51 PM
27	accessible access path	11/3/2014 11:26 AM
28	easy parking The roundabout	11/1/2014 5:52 AM
29	accessible easy parking grassy area Space/flat, accessible/easy parking	10/22/2014 10:51 PM

Help Us Improve Clawthorpe Park Playground

Q6 What features do you like least about the current playground?

Answered: 28 Skipped: 10

#	Responses	Date
1	needs more benches Just not enough stuff. Maybe a few more places to sit for adults, but that's no big deal	12/22/2014 2:34 PM
2	Current playground	12/22/2014 2:33 PM
3	native plants needed In future, could improve area by planting some native trees and shrubs	12/22/2014 2:31 PM
4	allow ball playing remove prickles fr grass Remove the prickles throughout the grass from thistles and the no ball playing signs removed	12/22/2014 2:26 PM
5	noisy and not private Although the road is fenced off, the chain link fence provides little privacy or sound protection from the road	12/22/2014 2:14 PM
6	more space for natural pl needs more benches Could use more benches. Current play structure old and tired, would be nice to have more spaces for imaginative and natural play	12/22/2014 2:13 PM
7	don't like chain link fen need yound and older eqp Need a 2 part: for young and older. 2 sizes of slides maybe lower activities. Scary chain link fence, no gates. Weird psedo laneway?	12/22/2014 2:11 PM
8	dirty sand dirty sand	12/22/2014 2:07 PM
9	everything is old It's all outdated	12/22/2014 2:05 PM
10	bench is old not safe The bench is worn and not safe	12/22/2014 1:45 PM
11	needs more benches wood structure old Wooden structure. Lack of seating and benches for viewing/picnics	12/22/2014 1:32 PM
12	too close to road Proximity to roadway	12/22/2014 1:30 PM
13	no sense of place No unique sense of place....does not capitalize on or reflect the context and surroundings.	11/30/2014 8:42 PM
14	not good for young kids The playground is very limited in usage and not child friendly for those under 5.	11/29/2014 1:37 AM
15	The tunnel has been removed. No one really seems to go there any more.	11/28/2014 11:45 PM
16	dirty sand Sand surface	11/28/2014 5:27 PM
17	needs to be wheelchair fr remove prickles fr grass Path/accessibility for wheelchairs/disabled. Grass currently contains many thorny plants.	11/28/2014 5:20 PM
18	everything is old need yound and older eqp not good for young kids The whole playground is not toddler friendly i.e. children under 5. It is an old playground that has lost it's play value. There are more younger children in the neighbourhood as the community transitions from seniors to young families owing to the affordability of the local area relative to the rest of the city. The play ground needs expansion given that there are more children living in the immediate area.	11/28/2014 12:15 PM
19	turn into dog park I visit this park daily and never see any children using it. There is an excellent park and playground close by on Stroud, which is also rarely used, and yet was just upgraded in a huge, long, and obviously expensive project. I feel that the city should save the open space for dogs owners who will use it frequently.	11/27/2014 7:42 AM
20	not good for young kids Very few options for little kids - ie: would like to see more things lower to the ground for climbing on	11/26/2014 10:18 PM
21	not much to explore open grassy area: not much to explore there.	11/25/2014 4:06 PM
22	leaves not cleared Not cleared of leaves often enough	11/24/2014 3:30 PM
23	not good for young kids Generally, it doesn't work for my kids. Play structure is too difficult for my 2 year old to climb/use, and my 5 year old is bored there. We live in the neighbourhood and rarely frequent this park, which is a shame.	11/10/2014 7:16 AM

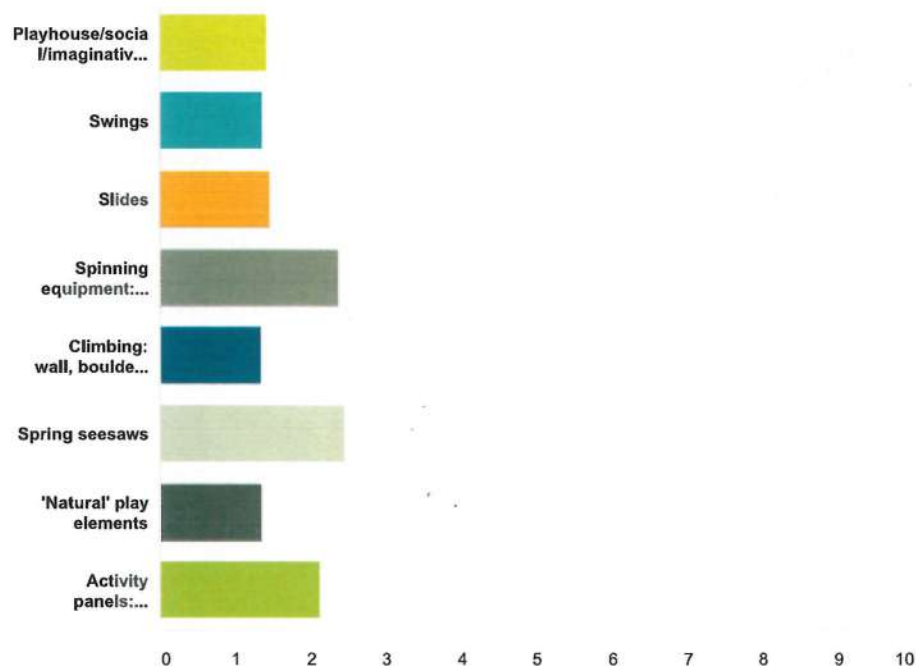
Help Us Improve Clawthorpe Park Playground

24	remove metal plate the metal plate screwed into the center of the play structure, kids trip on it.	11/9/2014 9:11 PM
25	slide the slide	11/9/2014 8:51 PM
26	too dark dark	11/3/2014 11:26 AM
27	the pond The pond	11/1/2014 5:52 AM
28	lack of sensory exper Lack of sensory experience	10/22/2014 10:51 PM

Help Us Improve Clawthorpe Park Playground

Q7 What value do you place on the following play features for the Clawthorpe Park playground? (Please rank all the amenities listed below.)

Answered: 38 Skipped: 0



	High Value	Medium Value	Low Value	No Opinion	Total	Weighted Average
Playhouse/social/imaginative play components	73.68% 28	15.79% 6	5.26% 2	5.26% 2	38	1.42
Swings	70.27% 26	24.32% 9	5.41% 2	0.00% 0	37	1.35
Slides	62.86% 22	28.57% 10	8.57% 3	0.00% 0	35	1.46
Spinning equipment: stand-on, sit-on	16.67% 6	30.56% 11	52.78% 19	0.00% 0	36	2.36
Climbing: wall, boulders, overhead climbers	71.05% 27	23.68% 9	5.26% 2	0.00% 0	38	1.34
Spring seesaws	13.89% 5	33.33% 12	47.22% 17	5.56% 2	36	2.44
'Natural' play elements	76.32% 29	13.16% 5	10.53% 4	0.00% 0	38	1.34
Activity panels: tactile, learning, games	33.33% 12	27.78% 10	33.33% 12	5.56% 2	36	2.11

Help Us Improve Clawthorpe Park Playground

#	Other (please specify)	Date
1	Water feature and design elements and gestures to the Bowker Creek. It was once a salmon and trout bearing watercourse - see below. There are also opportunities for interpretive signs and other information. More information at: https://www.crd.bc.ca/bowker-creek-initiative	11/30/2014 8:42 PM
2	The playground needs to be constructed in such a way to have slides and swings that will also serve older children. This playground needs to serve multi-age children.	11/28/2014 12:15 PM
3	I love the adult workout elements at the BHP playground and think those would be an awesome addition to Clawthorne Park	11/25/2014 5:03 PM
4	Easy access for bike commuters, particularly since N. Dairy is a decent bike route.	11/25/2014 4:06 PM
5	I am not sure under which category something like monkey bars, rings, or parallel bars would fall (gymnastics equipment perhaps), but we value those very highly.	11/9/2014 8:51 PM
6	xxxx	11/1/2014 5:52 AM

Help Us Improve Clawthorpe Park Playground

Q8 Please provide any other ideas and comments on how we can improve Clawthorpe Park playground.

Answered: 25 Skipped: 13

#	Responses	Date
1	zip line My children would love a zipline - natural area to play	12/22/2014 2:33 PM
2	daylight bowker creek I'm not sure if Bowker Creek runs through park, but daylighting it in this area would be an improvement	12/22/2014 2:31 PM
3	wooden tree to climb zip line Zip-line. Wooden tree, so they could climb a tree but not harm it	12/22/2014 2:26 PM
4	- Gear equipment to toddler/preschool age - lower climbing apparatus, plastic slide (not metal, hot in summer, too fast for toddler), chair swing - Basketball hoop and honkey/soccer net (again, geared for young children - lower hoop and smaller net) with rubber surface play house *** - Painted "road" on flat surfaces to drive toy trucks/cars from point A to B. - Lighting - Wood chips, not sand (too many neighbourhood cats) - Open parking on northside of dead-end street portion - Picnic bench/table in shade and in sightline of playground - More frequent garbage pick up - Crosswalk at Clawthorpe and Doncaster - Self propelled rocking horse/motorcycle/car/boat - Tire /disc swing - Zipline (Similar to Cook St Park) - wish list	12/22/2014 2:23 PM
5	more benches and tables Benches and tables for parents would be great	12/22/2014 2:14 PM
6	Putting in play structures that encourage imagination, keep some of the green space to run around. Also some activities using the ground such as hop scotch, four square or little roads provide creative play without structures	12/22/2014 2:13 PM
7	Bright lighting at night. Sometimes its used by older kids. The alley way through It could be paved or something?	12/22/2014 2:11 PM
8	Area for dogs - keep away from play area	12/22/2014 1:45 PM
9	Evening out the grass field by top dressing	12/22/2014 1:32 PM
10	more benches and tables More picnic tables	12/22/2014 1:30 PM
11	connection with bowker cr An important contextual piece that has been omitted from any of the background material is Clawthorpe Park's location within the Bowker Creek watershed, immediately adjacent to Bowker Creek. The Bowker Creek Watershed Management Plan (2003) and the Bowker Creek Blueprint (2013) -- both endorsed by Victoria Council - should inform the project. There is a great opportunity to integrate the spirit and principles of the above plans into the design principles of the park renewal project. This was done successfully during renewal of Browning Park in Saanich. Carkeek Park in Seattle also does this well by integrating an environmental stewardship message through its "Salmon Slide" and other playground equipment. The Park design should also integrate with future routing options of the Bowker Creek Greenway. As Victoria's plans are further developed, I recommend that the proposal be presented to the Bowker Creek Initiative steering committee for additional comment prior to approval.	11/30/2014 8:42 PM
12	small bike trail or paths for young children to learn how to ride bicycles.	11/29/2014 1:37 AM
13	Since Clawthorpe is relatively close to Oswald, which has a new playground, why not go for something completely different. I love the look of the "natural" play equipment in the pictures you presented. How about something like that where children's desire for climbing is met in a "natural" setting. It would give families a real different choice for outdoor playtime beyond their own backyard, instead of two relatively similar choices. Thanks for asking!	11/28/2014 11:45 PM
14	Let the kids decide!	11/28/2014 5:27 PM
15	Please maintain the large grassy area - it's really nice for open play (i.e. frisbee/soccer/bocci etc. for the 'older' kids in the neighbourhood). Also not sure about plant coverage/something to buffer against North Dairy street? It's nice to have it public, but it feels quite exposed.	11/28/2014 5:20 PM

Help Us Improve Clawthorpe Park Playground

16	This is a very small park. It would be best if it were off limits to dogs given that there is Gosworth park 2 blocks away which actually has a large off leash . For families and children to really enjoy this environment they should not be in competition with dogs that are off leash. There are also those dog owners who do not clean up after the dogs and then our children step in the pooh. Gosworth on the other hand is a very large park that can accommodate the many functions that it now does.	11/28/2014 12:15 PM
17	I visit this park daily and never see any children using it. There is an excellent park and playground close by on Stroud, which is also rarely used, and yet was just upgraded in a huge, long, and obviously expensive project. I feel that the city should save the open space for dogs owners who will use it frequently.	11/27/2014 7:42 AM
18	I see a lot of dog owners using this park because it has a nice open area to throw a ball and let them run around. The odd mom and kids there in the daytime as well, so a bigger playground with swings would be great. I think the park is in a unique setting and is a great destination or thoroughfare. Perhaps adding a small community garden at the east end would increase community involvement and engagement. Cheers.	11/26/2014 10:23 AM
19	connection with bowker cr daylight bowker creek Bowker Creek could be daylighted or partially daylighted to teach kids about the potential of Urban creek & how with the right remedial work, fish could again come up the creek	11/25/2014 5:15 PM
20	Listed above. And although I am not a parent taking my kids there I go there as a aunt of three. Perhaps opening up that question a little would give you a better idea of all who use the park,	11/25/2014 5:03 PM
21	make it a dog park pls Make it an official dog park please!	11/24/2014 3:30 PM
22	Please make sure you include monkey bars in the new park. We go to clawthorpe almost everyday and the monkey bars are a big part of our play. My daughter is obsessed with them and I do pull ups on them. Not all playgrounds have a good set of plain-old monkey bars (or traveling rings) that just go in a straight line for a long time. But kids just love them! The longer the better. It would be awesome if clawthorpe had these. Yes, basically like the ones it already has.	11/9/2014 9:11 PM
23	In its current state the playground is attractive to my 1.5- and 5.5- year old children mainly for the sand, the swings, and the big grassy area. The play structure is not adequate for a toddler; for example, there is no easy way for a little kid to get up to the slide; furthermore, the slide itself is not suitable for a little kid. That same structure is too boring for my five year old. She likes the monkey bars but they are probably intended for older children because they are too high (and she is scared she might fall). We would love to see TWO separate play structures put on the playground - one for little kids and one for big kids, hopefully both with slides and climbing options that are age-suitable. In addition, I cannot stress how much we value gymnastics equipment such as monkey bars, parallel bars, and rings that allow the children to use up energy, exercise their bodies, and acquire new physical skills. Those should be available not just for kids over 5, but for younger kids too. My toddler, for example, loves to hang and swing.	11/9/2014 8:51 PM
24	xxxxx	11/1/2014 5:52 AM
25	As inclusive & accessible to all visitors - keeping in mind our aging population who may still care for kids, parents with mobility challenges and other disABILITIES, hidden sensory/behavioural challenges. QUALITY OF LIFE 4 ALL. Play is #1 in a child's development no matter ability or background. Everyone deserves to play together.	10/22/2014 10:51 PM



December 4, 2014

File: 0360-20
Bowker Creek Initiative
Correspondence / Other

Ms Leigh Sifton
City of Victoria Parks
1 Centennial Square
Victoria, BC V8W 1P6

Dear Ms. Sifton:

**RE: COMMENTS FROM THE BOWKER CREEK INITIATIVE ON THE CLAWTHORPE PARK
PLAYGROUND IMPROVEMENTS PROJECT**

Thank you for the opportunity to provide comments on the Clawthorpe Park playground improvements project. The project was discussed at the Bowker Creek Initiative (BCI) steering committee meeting on October 28, 2014. Mr. Soren Henrich, a BCI committee member, attended the October 22 open house. Comments from the BCI steering committee are provided below.

The BCI is a multi-jurisdictional effort that brings together local government, community groups, post-secondary institutions and private citizens around a common goal of managing and restoring the watershed and Bowker Creek over the long term. The *Bowker Creek Blueprint: A 100-year action plan to restore the Bowker Creek Watershed* provides member municipalities, the community and other land stewards with information and guidance to manage and restore the watershed and creek corridor over time.

Bowker Creek runs underground along the northern and western edges of the park, beneath North Dairy and Clawthorpe Avenues. Park redevelopment is an opportunity to raise public awareness of Bowker Creek and the overall function of urban watersheds through the design of playground features. Playground features referencing the creek were successfully incorporated as part of the Browning Park redevelopment project in Saanich.

The BCI suggests:

- Selecting a theme for playground features (e.g. climbing structures, sculptures, imagination play elements, mosaics) that reference creek wildlife or habitat - see examples in Appendix A;
- Installing Bowker Creek interpretive signage;
- Auditory installations that allow children to hear the creek; and/or
- Innovative infrastructure, such as a plexi-glass manhole cover to allow children to see the creek.

The BCI steering committee would be pleased to work with City of Victoria Parks on developing park design elements.

Ms Leigh Sifton, City of Victoria, December 4, 2014

Re: Comments from BCI on Clawthorpe Park Playground Improvements Project

Page 2

The Blueprint also specifies reach-specific actions to achieve long-term objectives. Clawthorpe Park is located along Reach 11. Key actions for this reach are to extend a watershed-wide greenway along the park and eventual daylighting of the creek in this area. Please visit <https://www.crd.bc.ca/bowker-creek-initiative/about-bci/plans-and-strategies/bowker-creek-blueprint-a-100-year-plan> for more information about reach actions and the Blueprint.

If you have any questions or require clarification, please contact me at 250-360-3065 or jwatson@crd.bc.ca, or Emily Sinclair, BCI Coordinator, at 250-360-3302 or esinclair@crd.bc.ca. We look forward to seeing the final design.

We appreciate the opportunity to participate as an example of how integrated planning can respond to the Bowker Creek Blueprint.

Sincerely,



Jody Watson
Chair, Bowker Creek Initiative

JW:cam
Enclosures: 1

1629157

APPENDIX A

PLAYGROUND FEATURES THAT REFERENCE BOWKER CREEK

Climbing structures natural play, and social / imaginative play features that utilize sculpture or other design elements inspired by creek wildlife or habitat



Figure 1. Salmon Sculpture in Williams Lake



Figure 2. Frog Sculpture in Browning Park, Saanich BC

1629157



Figure 3. Climbing Structure at Browning Park, Saanich BC



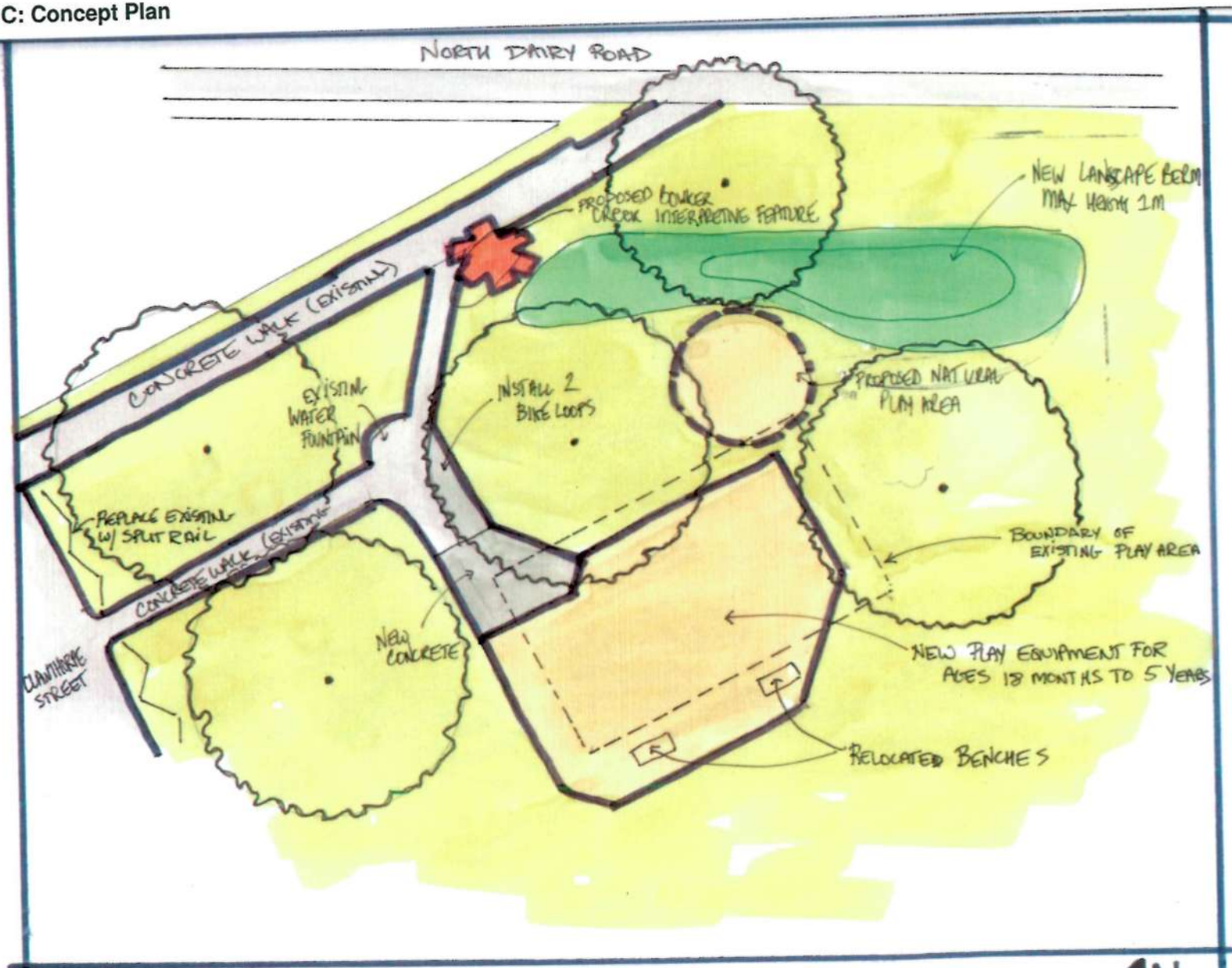
Figure 4. Salmon installation and foot bridge at Browning Park, Saanich BC

1629157



1 Centennial Square
Victoria, British Columbia
V8W 1P6
victoria.ca

Appendix C: Concept Plan



CLAWTHORPE PARK: 2015 PLAY AREA UPGRADE CONCEPT PLAN