

Clawthorpe Park Playground Improvements

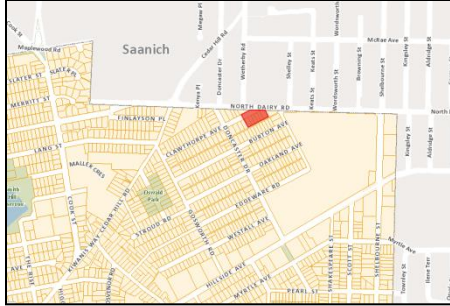
Governance and Priorities Committee: March 12, 2015



Report Purpose

- To provide an update on the results of the public engagement and to outline the next steps for Clawthorpe Park playground and park renewal project

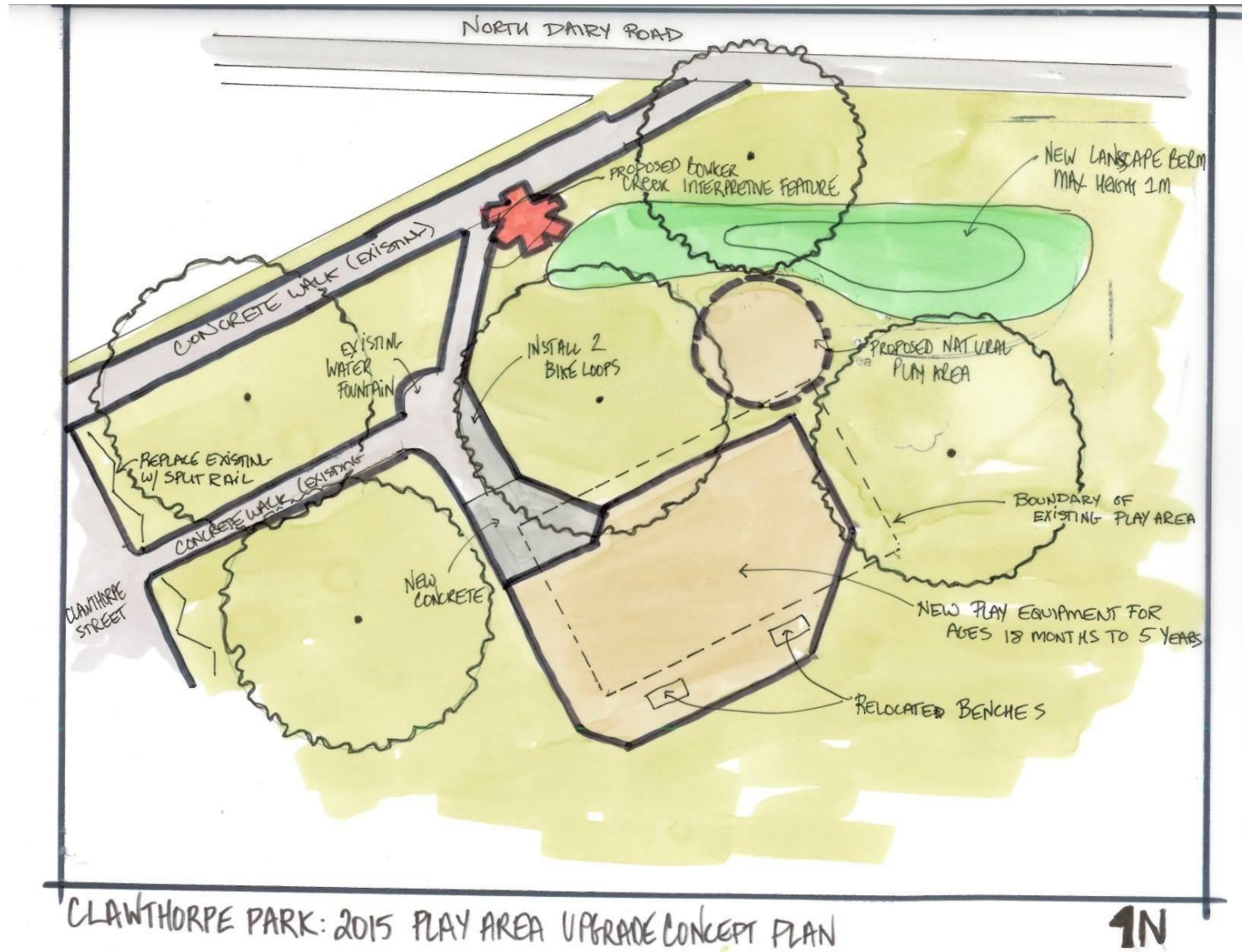
About Clawthorpe Park



Summary of what we heard

- General comments:
 - More kids in the neighbourhood now
 - Is an old playground that has lost its play value
 - Interest in celebrating Bowker Creek
- Popular current park features:
 - Large grassy open field and the big trees
 - Swings, sandbox, climbing structure
- Least liked current features:
 - Very few options for kids under 5
- Future play equipment desires:
 - Climbing, swings, natural play, slides, spinning equipment

Conceptual Plan



Budget and Timelines

- A budget request of \$107,000 for the play area and park upgrade is included in the 2015 Financial Plan for Council consideration
- Pending budget approval, construction would commence in early summer and is expected to take eight weeks to complete.

Recommendation

- That Council receive this report for information