

# Ship Point Master Plan – Process & Objectives



## Background

- Initiative to develop detailed master plan and implementation strategy for Ship Point site as described in *2015-2018 Strategic Plan*
- Builds upon vision and policy direction from *Harbour Vitality Principles* (2014)
- Represents an opportunity to implement a key component of the Harbour Pathway
- Master plan will include a detailed design concept along with Class 'C' costing and phasing



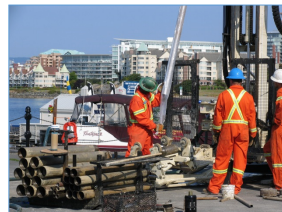
## Project Team

- City has retained services of PWL Partnership to develop the Master Plan and Implementation Strategy
- Award winning landscape architecture and urban design firm
- Project team also includes:
  - HCMA Architecture + Design (Victoria office)
  - Integral Group (Sustainability Engineering)
  - Bunt & Associates (Transportation engineering)
- Includes close collaboration with City Staff and key Stakeholders



## Geotechnical Background

- Design concepts will be informed by previous geotechnical, structural and environmental studies related to:
  - Soil and bedrock profiles/composition
  - Environmental contamination
  - Sea level rise
  - Seismic risks
  - Sea wall condition assessment and repair options

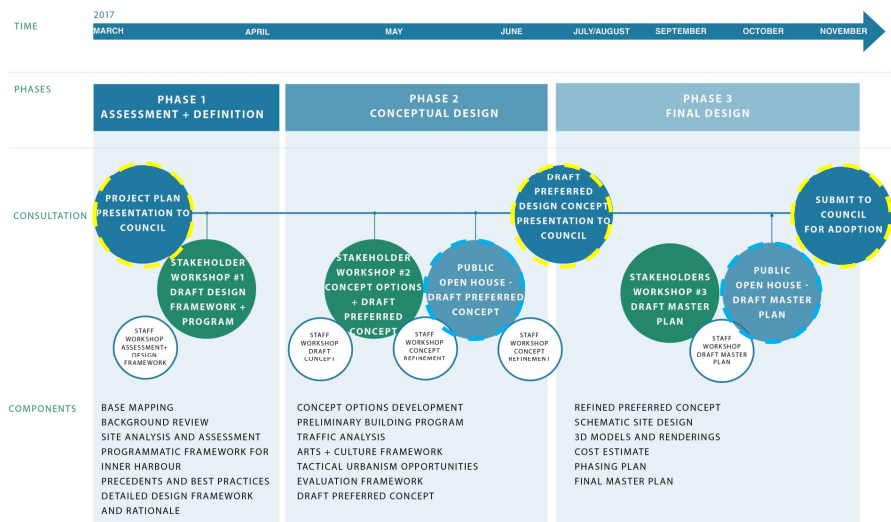


## Project Objectives and Site Program

- Create world-class urban waterfront park/open space
- Support other related waterfront initiatives and existing City policy
- Support year-round special events/festivals at different scales
- Integrate Harbour Pathway with strong connections to Wharf St and Lower Causeway
- Design portions of site as plaza/park space to support passive and active recreational uses
- Explore opportunities for commercial development on portion of site to support activation and connectivity
- Maintain vehicle loading, passenger drop-off, circulation and access to support sea plane terminal and other on-site activities and events
- Explore reconfiguration of parking to support working harbour and site design concepts



## Process and Timeline



## Stakeholder Collaboration

- Process includes periodic collaboration with the public and key stakeholders such as:
  - Victoria Downtown Residents Association
  - Songhees Nation
  - Esquimalt Nation
  - Harbour Air
  - Greater Victoria Harbour Authority
  - Downtown Victoria Business Association
  - Urban Development Institute – Capital Region
  - Tourism Victoria
  - Province of British Columbia
  - Greater Victoria Placemaking Network
  - Art in Public Spaces Committee - City of Victoria
  - Victoria Esquimalt Harbour Society



## Recommendation

That Council direct staff to:

1. Undertake the Ship Point master plan process as outlined in this report;
2. Confirm the key objectives and programmatic elements outlined in this report as the basis for developing design concepts and a master plan for Ship Point that:
  - a. reflect Victoria's history, support other waterfront planning initiatives and align with City policies;
  - b. support the needs of the working harbour;
  - c. results in a high-quality public space that facilitates a range of year-round special events and activities;
  - d. includes attractive park spaces that support passive and active recreational uses;
  - e. considers the reconfiguration of public parking to integrate with and support activities and uses at Ship Point; and
  - f. considers appropriate and well-designed commercial development to support public space activation, connectivity and/or financial viability.

