

COMMUNITY GARDEN PROPOSAL FOR FRANKLIN GREEN

Prepared For: City of Victoria, Parks Department
1 Centennial Square, Victoria, BC

Prepared By: Shan Marcus and Jessie Rucker
1110 May Street Victoria, BC

Project Description:

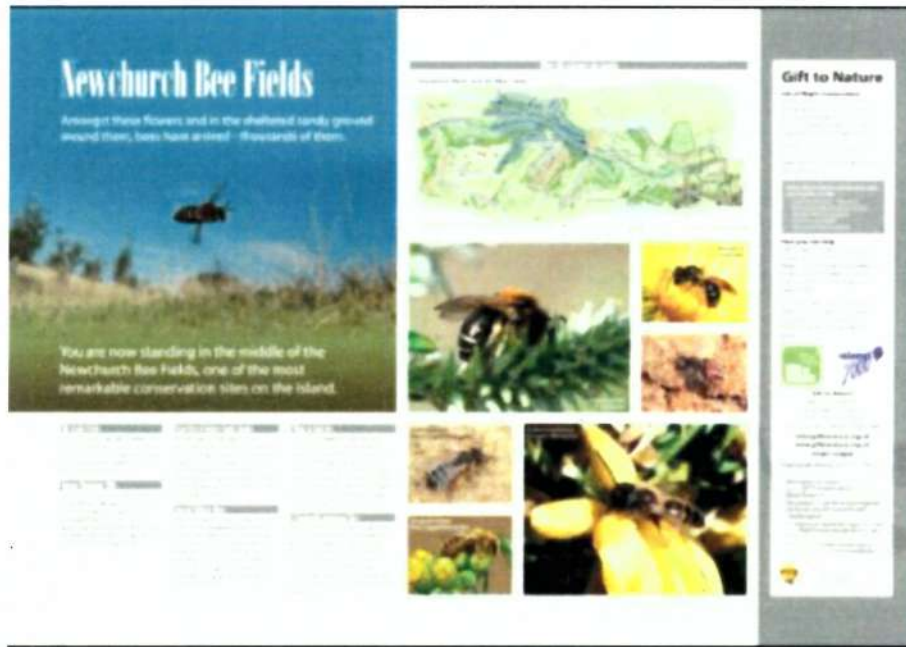
This Community Commons Garden project seeks to combine food security initiatives with good design and organic land care practises to inspire and educate the public about the steps you can take to incorporate traditional foods and natural methods into your backyard. The project aims to include the following initiatives:

- **Native plant forage garden:** This effort is to bring awareness to the role that traditional food systems play in bringing food security to the region. Plant choices are based on these criteria:
 - Traditional food or medicinal crop
 - Nectar sources through 4 seasons
 - Ornamental value
- Our goal is to raise awareness about the value of traditional food systems, the plants, their uses and the culture connected to them. We seek to inspire people to eat the berries of these crops and learn how to identify these plants in their surroundings.
- The sizing of this garden would be approximately 70' x 15'
- The plants included in this area are:
 - Viburnum trilobum: Highbush Cranberry
 - Prunus virginiana: Chokecherry
 - Shepherdia canadensis: Soapberry
 - Amelanchier alnifolia: Saskatoon
 - Vaccinium ovatum: Evergreen Huckleberry
 - Gaultheria shallon: Salal

- *Corylus cornuta*: Beaked Hazelnut
 - *Rosa nutkana*: Nootka Rose
 - *Camassia leichtlinii*: Great Camas
- **Pollinator gardens:** In recognition of the role that pollinators play in food security, we will be including native plants that are placed specifically to attract butterflies and bees as well as provide nectar and nesting spots for these insects. We will make our plant choices based on providing 4 season nectar as well as providing visual interest for park users. These areas will be no-till, meaning leaf litter will be left in place to provide nesting spots for bees.
 - This garden will be located within the overall Native Plant Forage garden.
 - The plants included in this area are:
 - *Anaphalis margaritacea*: Pearly Everlasting
 - *Lupinus polyphyllus*: Large Leaved Lupine
 - *Achillea Millefolium*: Yarrow
 - *Ribes sanguineum*: Red Flowering Currant
 - *Mahonia x media*: Oregon Grape
 - *Lonicera ciliosa*: Trumpet Honeysuckle
 - *Philadelphus lewisii*: Mock Orange
 - *Lilium columbianum*: Tiger Lily
 - *Eriophyllum lanatum*: Woolly Sunflower
 - *Dicentra formosa*: Pacific Bleeding Heart
 - **Herb gardens:** Our herb garden area is a part of the commons garden located in an easily accessible area. This area will encourage people to harvest herbs as needed or desired. The goal of this area is to provide access to quality herbs for a diversity of culinary, medicinal and tea drinking reasons.
 - Sizing of this garden would be approximately 4'x4' and about 2' high. The raised planter will be made of rough cedar 2x material.
 - This area will include some of the following herbs:
 - *Rosmarinus officinalis*: Rosemary
 - *Thymus*: Thyme
 - *Origanum vulgare*: Oregano
 - *Allium schoenoprasum*: Chives

- *Ocimum basilicum*: Basil
 - *Coriandrum sativum*: Coriander
 - Other miscellaneous herbs
- **Education:** This commons garden will have a single interpretive sign placed prominently within the garden. It will describe a bit about the project, project partners, funders and include an image of the plants with common and botanical name, pollinator value and culinary/medicinal value or traditional use.
 - Size of the sign will be approximately 48" W x 30" H and be printed on weather resistant, abrasion resistant material from a professional print shop. It will be mounted on cedar backing mounted on cedar 4x4s pounded into the ground. The sign will sit at a 45 degree angle so that people are able to read the sign then look around for the plants and so the sign does not obstruct the view of the garden.
 - When designed, the sign will be approved by the city before being installed.
 - Some examples of similar interpretive signs:





- **Seating area:** We will place a seating area made up of donated benches near the garden beds to encourage people to sit and enjoy the gardens. Our goal is that these benches encourage people who may be having lunch nearby to sit and enjoy their meal away from the street and pick up a coffee or snack at nearby cafes. We believe that these seating areas will positively affect the businesses on Mason Street.
- The North Park Neighbourhood Association has two benches which may be donated to the project. They will be affixed to movable concrete blocks. We do not currently have an image of these benches.

This project is a good fit for the North Park neighbourhood because:

- It will help to improve the streetscape in the Franklin Green Area
- It will draw tourists and the general public to the park and benefit neighbouring businesses such as Taco Justice, Yoka's, Mason Street Farm
- It will create more varied use in the park and bring community members together
- It will give children an opportunity to learn about native plants and traditional foods
- It will provide a buffer for air and noise pollution from Cook St. and the adjacent parking lot, and create a more inviting atmosphere in the park
- North Park can be an example to the citizens about practical tips on how to use native plants in an ornamental fashion, how to use traditional foods to increase food security in the city and how to use eco-friendly gardening to provide habitat for birds and pollinators

Public Consultation:

All of the neighbours on the 1000 block of Mason St., and also some who are near the street, were directly approached or contacted by email. Most liked the idea of the garden to have something more happening in the park, but two did not appreciate the idea and had concerns about watering and litter. Also, a posted flier about our project was left at two small apartment buildings in which only one person responded to it saying she was very supportive of a garden in Franklin Green.

In September 2017, the City put up an info board at Franklin Green describing the proposed project. While the sign was up, the City received three emails in support of the project, and one email expressing concerns about the project.

Project Location:

This area has been chosen because it has been identified as an underutilized area of the park.

Water could be accessed through a water line (underground) and a quick coupler installed within the garden by the City. The water could be turned on with a water key, but no standpipe would be installed.

A site plan is available below.

Project Partners:

As of now, the project partners are:

- North Park Neighbourhood Association Board
- Shan Marcus, independent landscaper

Groups we have consulted with or will consult for input on sustaining the project are Mason St. City Farm, Spring Ridge Commons, and Hultian Services Society.

Shan Marcus, independent landscaper, will donate 2-4 hours per month, as required to keep the area tidy with moderate pruning and check the irrigation system. Jessie, who lives on Mason St., will ensure the herb box has enough water each week. We will have small volunteer work sessions every season and Shan is enthusiastic about assisting with organizing volunteers.

The Community Spaces Committee of the North Park Association will oversee how care for the site is organized. Aside from sending notices to North Park Neighbourhood Association's membership and basic promotion with fliers on notice boards, we will consult with Mason St. City Farm, Spring Ridge Commons, and Saanich Native Plants as needed and also connect with these groups to entice volunteer help.

If the project needs to end, Shan, who is knowledgeable with transplanting shrubs, will remove the plants for donation to community establishments or individuals and then re-seed the space.

We hope to have other partners jump on board as the project begins to take shape and will make connections with nearby community groups to develop a volunteer base.

The garden installation will start in the late fall of 2017.

WORKPLAN SCHEDULE:

Day 1, Site and volunteer orientation/first stage of sheet-mulching with cardboard and leaf compost

Day 2, Plant large shrubs in native plant bed

Day 3, Build herb box, and start base for potential bench

Day 4, Place herbs into garden box/ pour concrete and anchor bench

Day 5, Plant smaller perennials in native plant space

Day 6, Install timed irrigation system and garden sign

Day 7, Tidy area

Project Budget:

The total project cost is estimated at \$7,340.00. Funds and resources to complete the project will be provided by the My Great Neighbourhood Grant received in August 2017 (pending Council approval of the proposed garden, the project would receive \$3,000.00), the applicants, and the City of Victoria Parks Department. A description of the project costs and where the funds and resources will come from is available below.

Items to Purchase with Grant Funds

Plants \$750.00

Mulch \$700.00

Concrete blocks/Lumber/Bolts \$400.00

Soil \$200.00

Irrigation \$400.00

Disposal \$150.00

Materials for volunteer orientation \$100.00 (i.e., making posters, buying juice)

Stakes and ties for trees/shrubs \$50.00

Social media set up 3 hrs @ \$50/hr \$150.00

Insurance rider \$100.00

Project retirement (if necessary) \$0

TOTAL FUNDS FROM MY GREAT NEIGHBOURHOOD GRANT: \$3,000.00

Items Provided by Applicant

112 volunteer hours for orientation/installation \$2,240.00 (at \$20 per hour)

Interpretive sign \$360.00

Lumber for raised bed \$200.00

Bench – donated \$200.00

17 hours of design, i.e., sign and irrigation \$340.00 (at \$20 per hour)

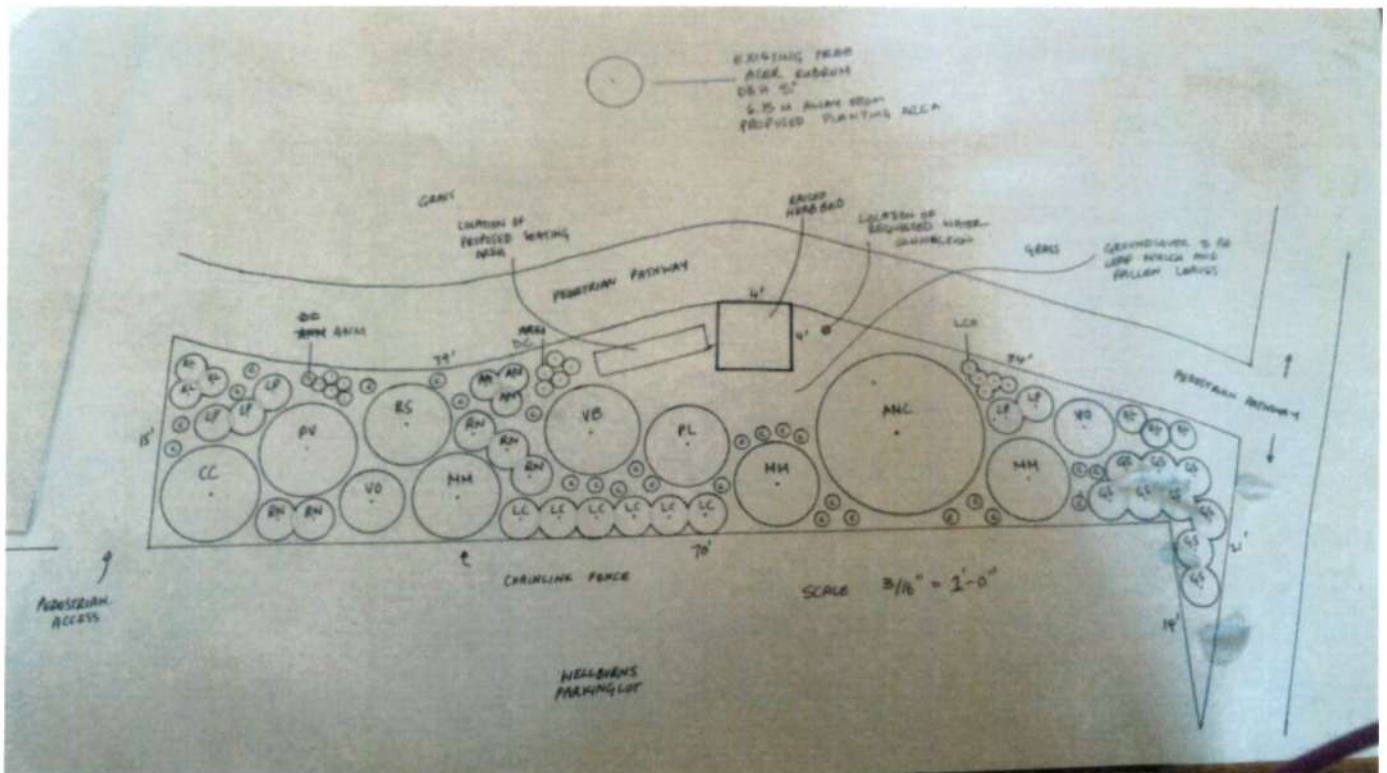
TOTAL CONTRIBUTION FROM APPLICANTS \$3,340.00

Items Provided by the City

Water connection \$1000.00

TOTAL CONTRIBUTION FROM PARKS: \$1000.00

Site plan:



Planting plan:

#	Size	Abbrev.	Botanical Name	Common Name
Trees				
1	3G	AMC	Amelanchier alnifolia	Saskatoon
1	3G	PV	Prunus virginiana	Chokecherry
Shrubs				
1	1G	PL	Philadelphus lewisii	Mock Orange
2	1G	VO	Vaccinium ovatum	Evergreen Huckleberry
9	1G	GS	Gaultheria shallon	Salal
1	3G	CC	Corylus cornuta	Beaked Hazelnut
5	1G	RN	Rosa nutkana	Nootka Rose
1	1G	RS	Ribes sanguenium	Red Flowering Currant
3	3G	MM	Mahonia x media	Oregon Grape
6	1G	LC	Lonicera ciliosa	Trumpet Honeysuckle
1	1G	VB	Viburnum trilobum	Highbush Cranberry
Perennials				
5	4"	DC	Dicentra formosa	Pacific bleeding heart
5	4"	LCO	Lilium columbianum	Tiger Lily
6	1G	EL	Eriophyllum lanatum	Wooly Sunflower
6	4"	ANM	Anaphalis margaritacea	Pearly Everlasting
5	1G	LP	Lupinus polyphyllus	Large Leaved Lupine
3	4"	AM	Achillea millefolium	Yarrow
Bulbs				
27	Seed	C	Camassia leichtlinii	Great Camas

Plant Choices for Native Plant
pollinator and forage garden



Ribes sanguineum: Red Flowering Currant



Lonicera ciliosa: Trumpet Honeysuckle



Mahonia x media: Oregon Grape



Amelanchier alnifolia: Saskatoon



Philadelphus lewisii: Mock Orange



Gaultheria shallon: Salal



Vaccinium ovatum: Evergreen Huckleberry



Corylus cornuta: Beaked Hazelnut



Rosa nutkana: Nootka Rose



Prunus virginiana: Chokecherry



Viburnum trilobum: Highbush Cranberry



Achillea millefolium: Yarrow



Camassia leichtlinii: Great Camas



Eryophyllum lanatum: Woolly Sunflower



Lilium columbianum: Tiger Lily



Dicentra formosa: Pacific Bleeding Heart



Anaphalis margaritacea: Pearly Everlasting



Shepherdia canadensis: Soolopalie



Lupinus polyphyllus: Large Leaved Lupine