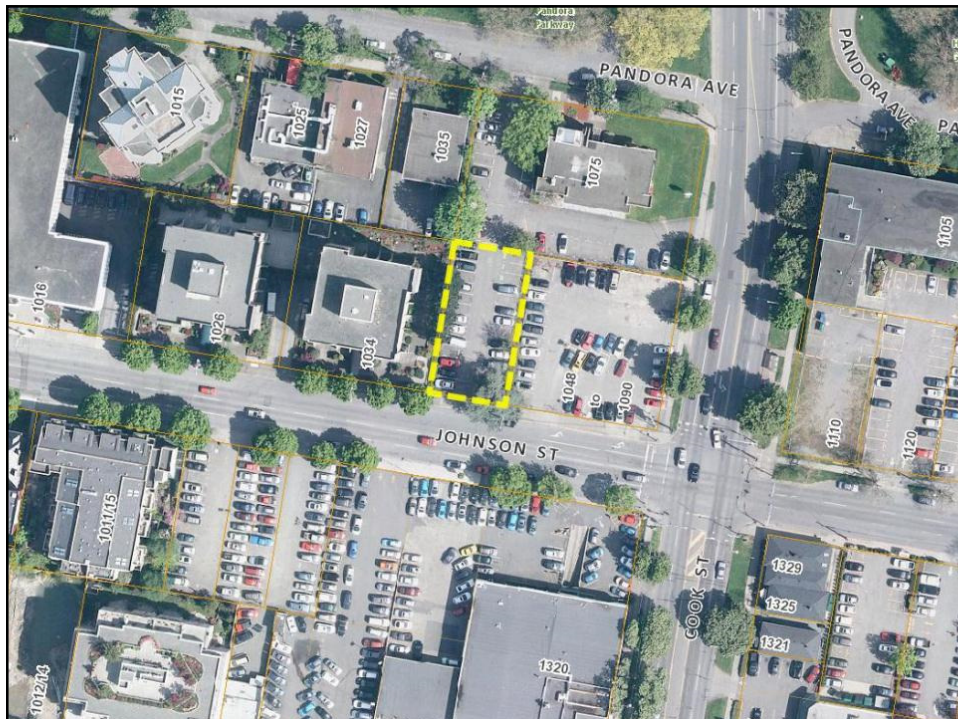
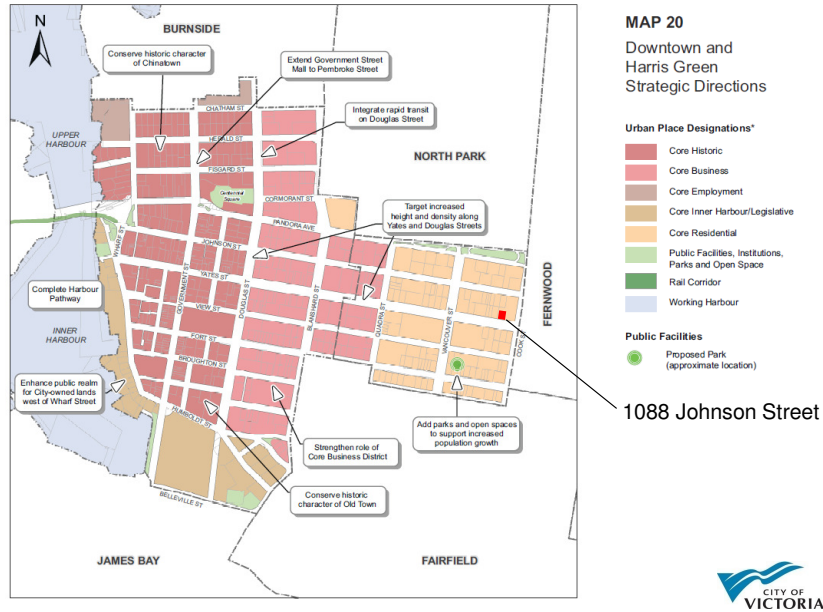

Development Permit Application for 1088 Johnson Street



Official Community Plan



Existing Context



Subject Property



Sutton Place (west on Johnson Street)



Mondrian (east on Johnson Street)



Neighbourhood Context



Canada Revenue Agency Building



Heritage Restoration



Mixed Use 4-Storey



Mondrian



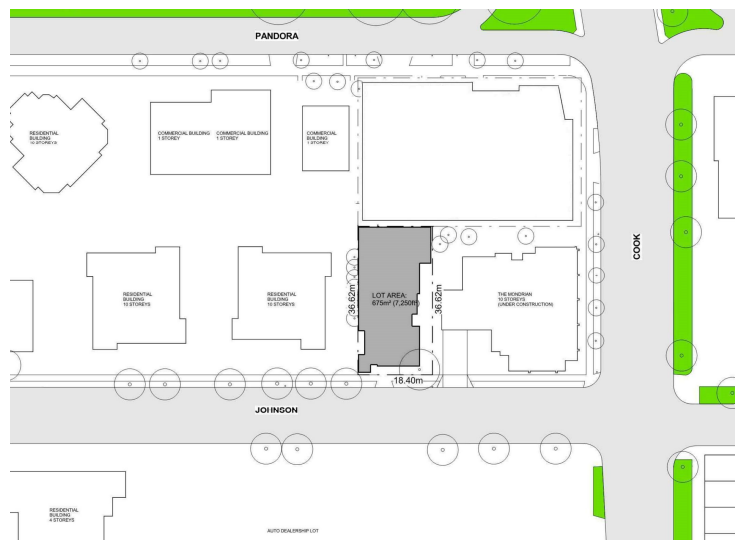
Mondrian



Sutton Place East



Site Plan



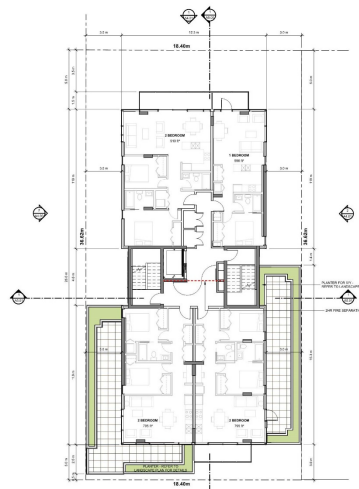
Floor Plans | Basement and Ground Floor



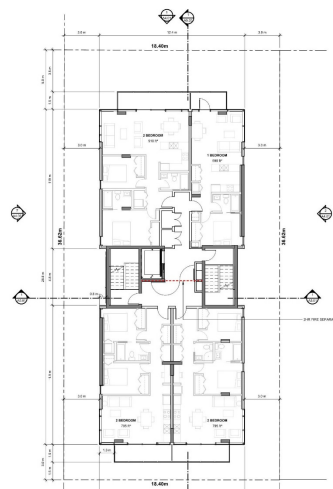
Floor Plans | Level 2 and 3



Floor Plans | Level 4 and 5 to 9



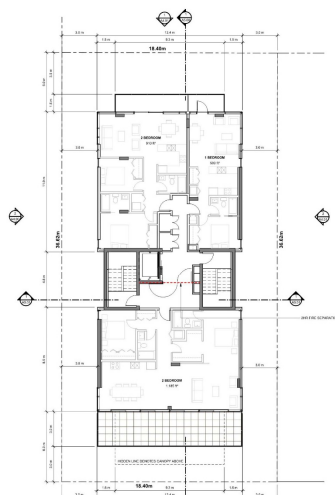
Level 4



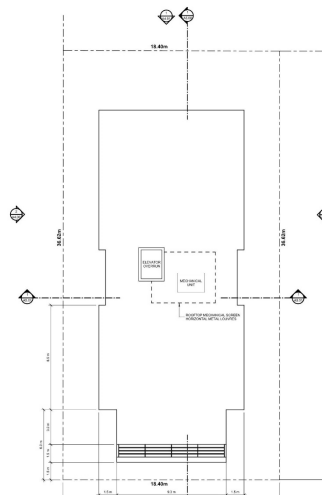
Level 5 - 9



Floor Plans | Level 10 and Roof



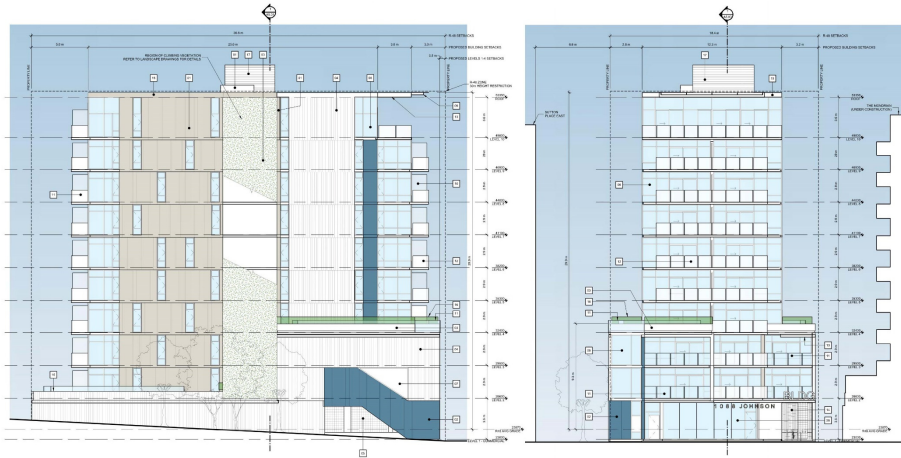
Level 10



Roof Plan



Elevations



West Elevation

South Elevation



Elevations



East Elevation

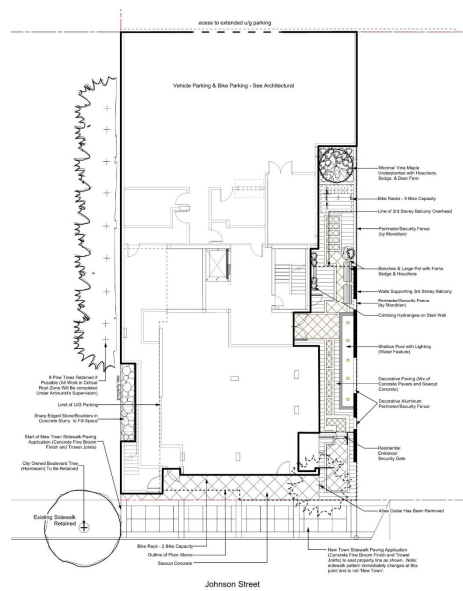
North Elevation



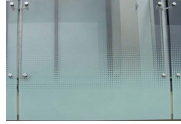
Streetscape Context Elevation | Johnson Street



Landscape Plan



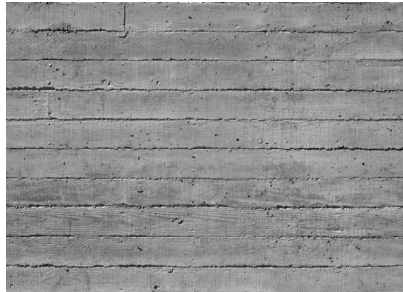
Materials



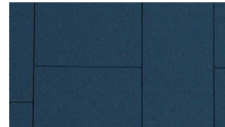
Glass Balcony Guard w/ Frit



Cedar Soffit & Siding



Board Form Concrete



Cement Panel (Blue)



Cement Panel (Champagne)



Relevant History



Previous proposal (August 2013)



Current proposal

