
Heritage Tax Incentive
Program Application
for
727-729 Johnson Street
(Garesché Stables & Offices)



Gareshé Stables & Offices



Location | Downtown Core Heritage Conservation Area



Location | Downtown Core Heritage Conservation Area



Archival photograph | 1960 – Olympic Garage



Archival photograph | c1910 – Plimley's Garage



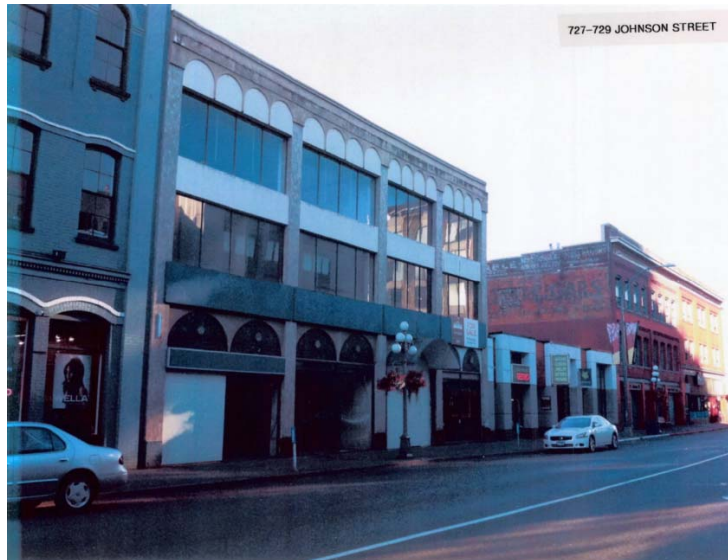
April 13.17 | Approved Rezoning and DP Application



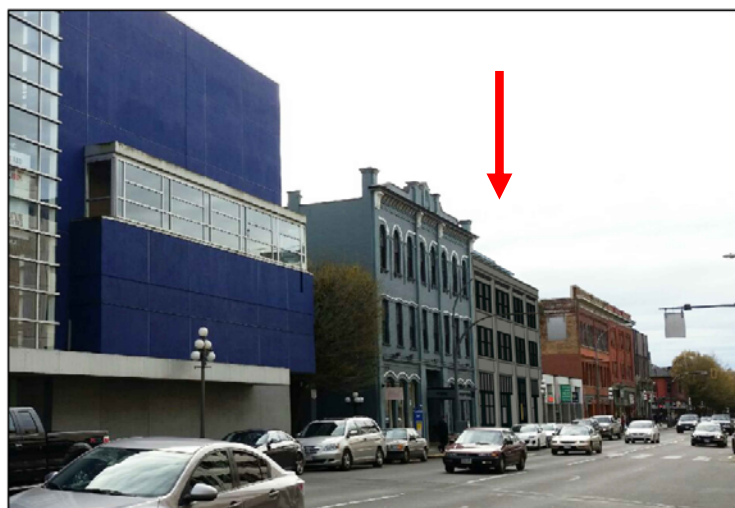
April 13.17 | Approved Rezoning and DP Application



Restoration / Rehabilitation and Seismic Upgrading



Upon Completion | Increase in property value



3
-
NTS



Upon Completion | Increase in property taxes

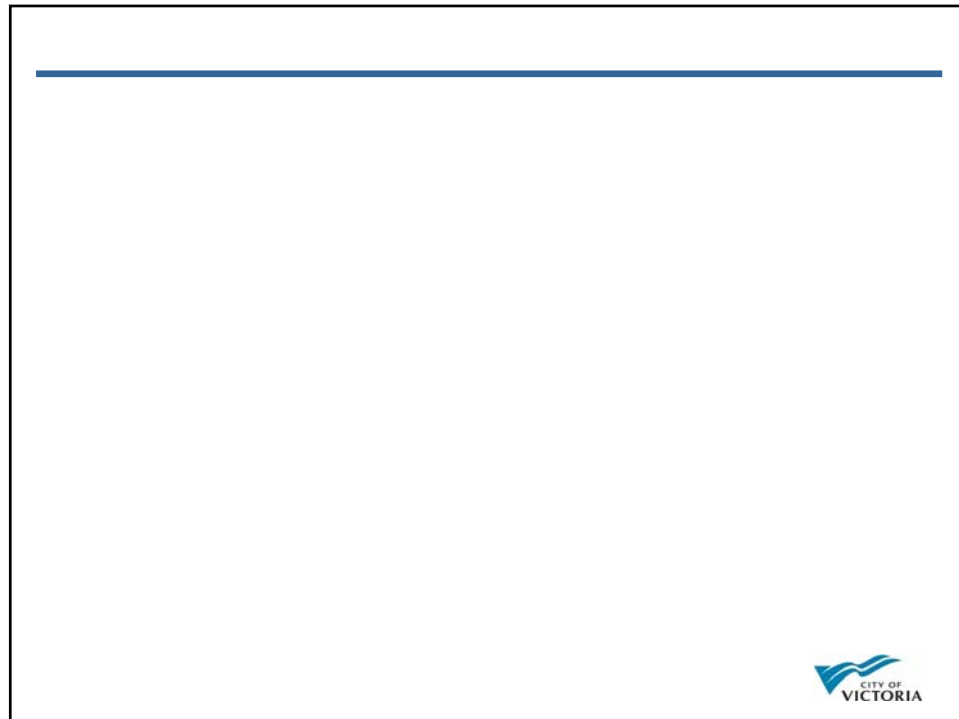


4 JOHNSON ST LOOKING EAST
NTS

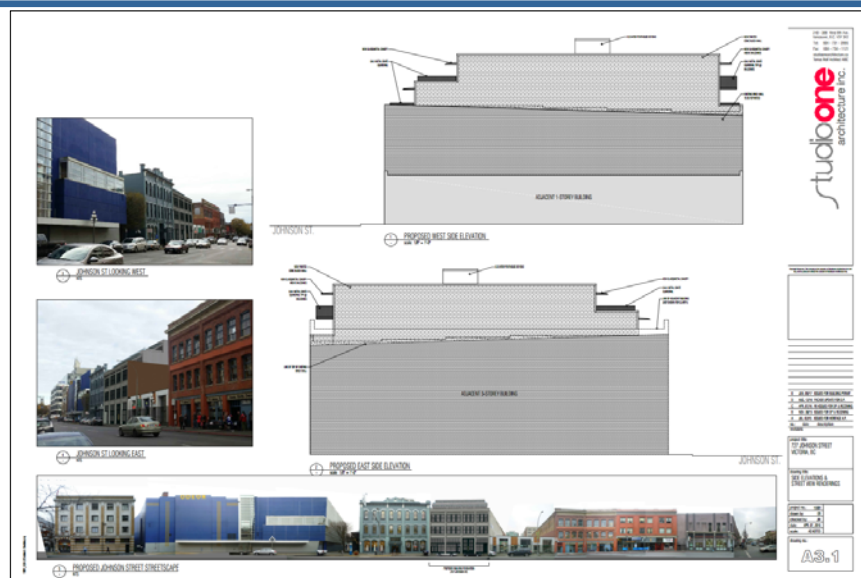


In Conclusion

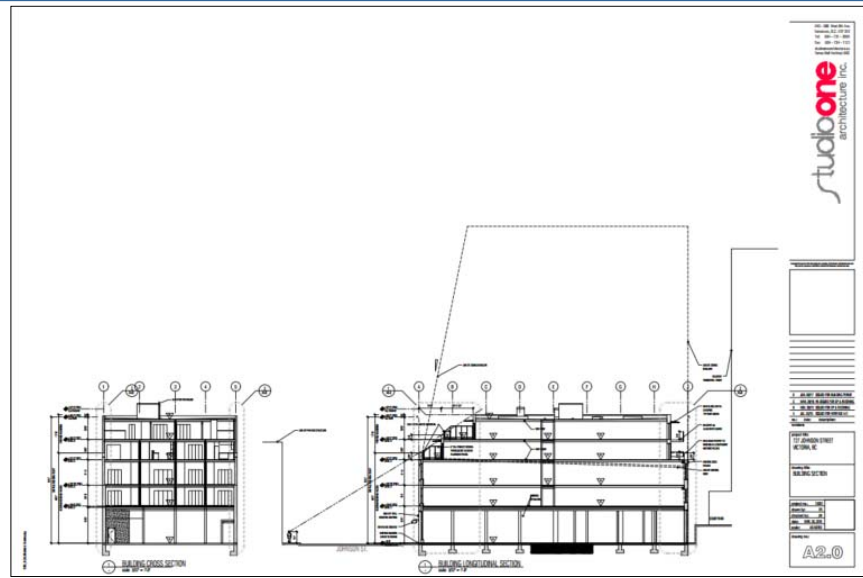




Side Elevations



Building Section



Location | Downtown Core Heritage Conservation Area

