

Demolish redundant existing driveway crossings and replace with new full height curb gutter and sidewalk to City of Victoria standards.

Rain garden overflow drain. Concrete catch basin chamber with domed, beehive grate. Connect to existing storm system pipe as indicated.

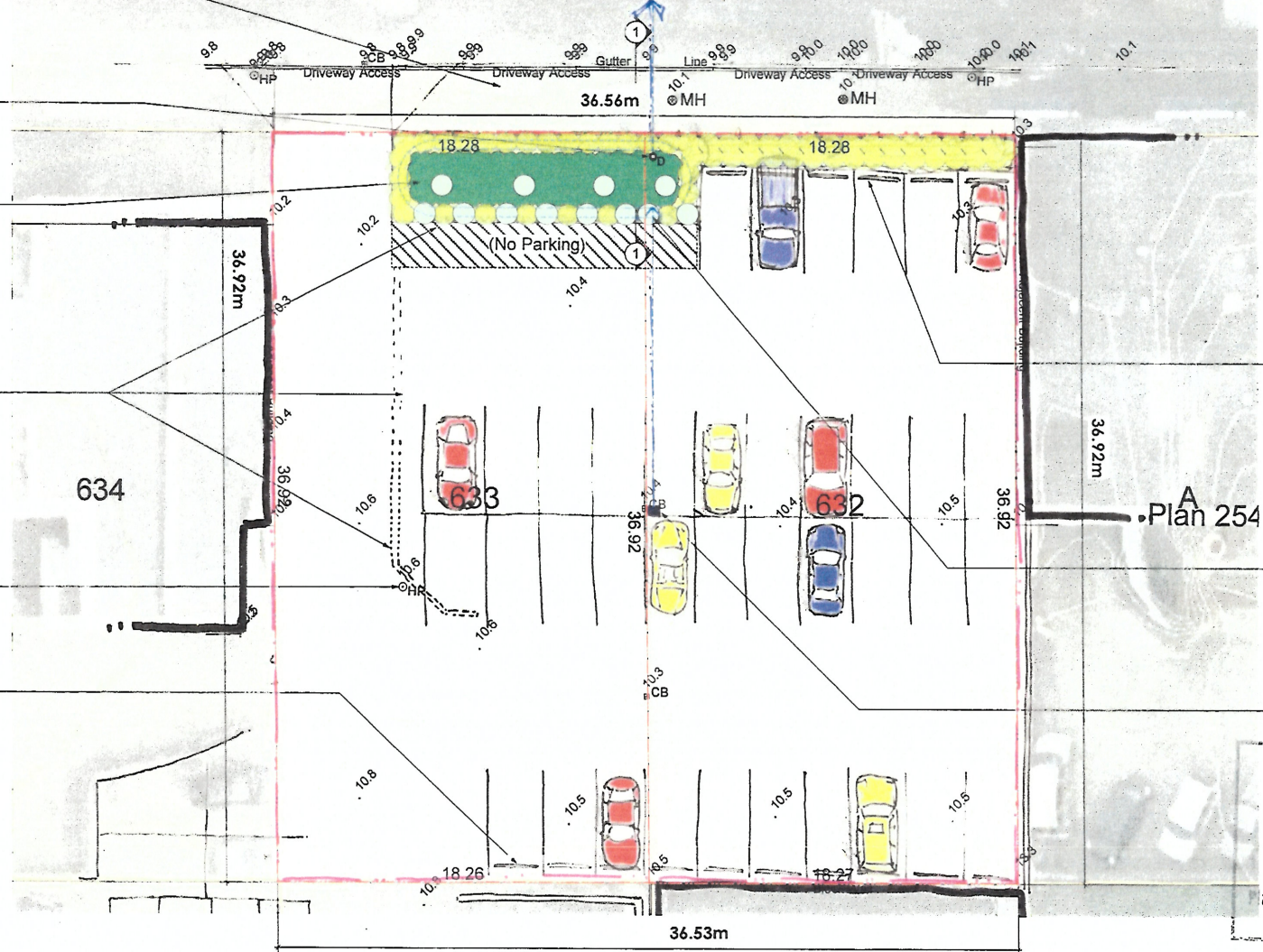
Rain garden treats existing hard surface runoff from the site by intercepting stormwater from existing catch basin as indicated.

All existing concrete walls to be demolished.

Existing hydro pole to remain.

Install wheel stops along this edge to the City of Victoria, Schedule C - Off Street Parking bylaw requirements. Not less than 1m from the front end of the parking space.

## Chatham Street



### GENERAL NOTES:

1. DO NOT SCALE DRAWING: Verify all property lines and existing structures to remain, prior to commencing work.
2. All plan dimensions are in metres.
3. Existing onsite pavement grades and drainage slopes to be maintained. Proposed parking stalls drain to existing catch basins as indicated. All drive aisles and parking stalls maintain a <3.5% slope.
4. All parking stalls, drive aisles and wheel stops proposed conform to the standard of the City of Victoria, Schedule C - Off Street Parking bylaw requirements. Refer Layout Plan for additional information.

Install wheel stops along this edge to the City of Victoria, Schedule C - Off Street Parking bylaw requirements. Not less than 1m from the front end of the parking space.

Daylight existing storm pipe to allow for interception and treatment of stormwater within rain garden.

Existing catch basin.

Received  
City of Victoria

DEC 22 2017

Planning & Development Department  
Development Services Division

## 629 & 635 Chatham Street LANDSCAPE CONCEPT PLAN

DATE : 22.12.2017

SCALE : 1:100 @ 24x36

PRELIMINARY  
NOT FOR CONSTRUCTION

0 5 10 m

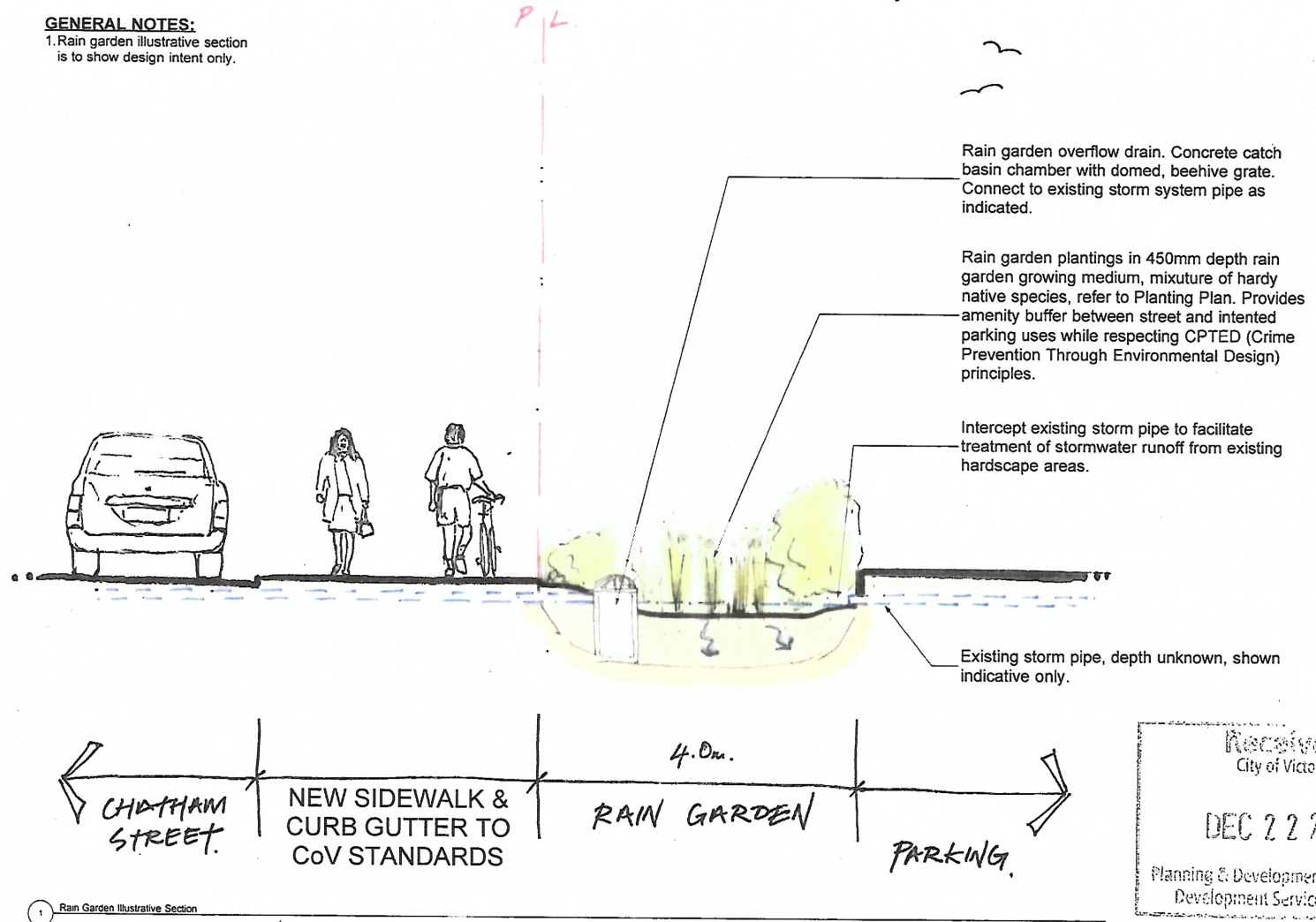


**Murdoch  
de Greeff INC**  
Landscape Planning & Design

200 - 524 Cudlithel Road Phone: 250.412-2891  
Victoria, BC V8Z 1G1 Fax: 250.412-2892

**GENERAL NOTES:**

1. Rain garden illustrative section is to show design intent only.



**629 & 635 Chatham Street**  
**LANDSCAPE ILLUSTRATIVE SECTION**

DATE : 22.12.2017

SCALE : NTS

PRELIMINARY  
NOT FOR CONSTRUCTION



**Murdoch  
de Greeff INC**  
Landscape Planning & Design

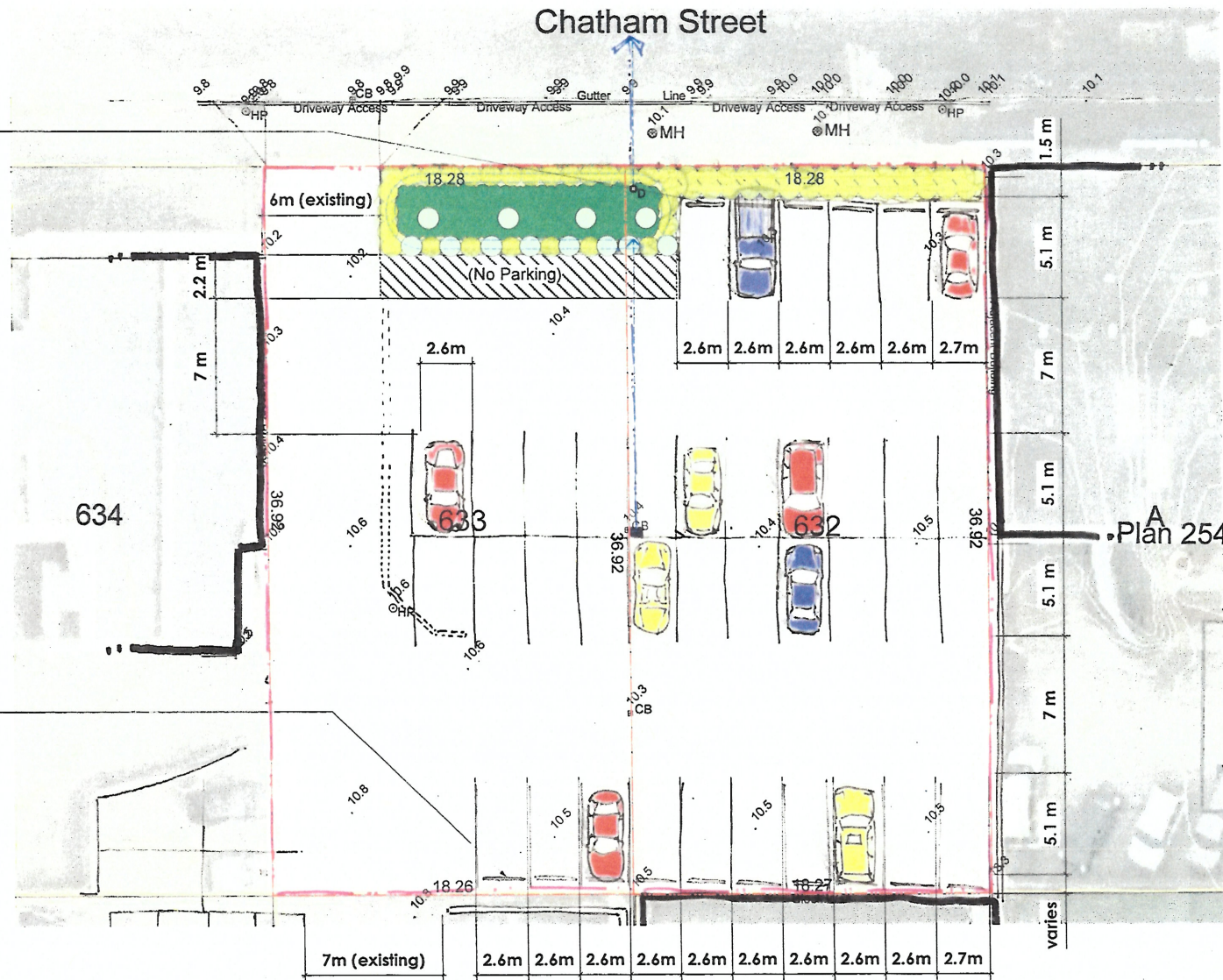
200 - 524 Cuddehul Road Phone: 250.412-2891  
Victoria, BC V8T 1G1 Fax: 250.412-2892



Install wheel stops along this edge to the City of Victoria, Schedule C - Off Street Parking bylaw requirements. Not less than 1m from the front end of the parking space.

Install wheel stops along this edge to the City of Victoria, Schedule C - Off Street Parking bylaw requirements. Not less than 1m from the front end of the parking space.

Chatham Street



#### GENERAL NOTES:

1. DO NOT SCALE DRAWING: Verify all property lines and existing structures to remain, prior to commencing work.
2. All plan dimensions are in metres.
3. Existing pavement grades and drainage slopes to be maintained. Proposed parking stalls drain to existing catch basins as indicated. All drive aisles and parking stalls maintain a <3.5% slope.
4. All parking stalls, drive aisles and wheel stops proposed conform to the standard of the City of Victoria, Schedule C - Off Street Parking bylaw requirements. Refer Layout Plan for additional information.
5. Typical Parkings Stall Dimensions as per City of Victoria-Schedule C, 90 degree stalls = 2.6m width typical. 90 degrees stall adjacent to wall = 2.7m width typical.
6. All proposed wheel stops shall be installed as per City of Victoria, Schedule C - Off Street Parking bylaw requirements. Refer layout.

Received  
City of Victoria

DEC 22 2017

Planning & Development Department  
Development Services Division

## 629 & 635 Chatham Street LAYOUT PLAN

DATE : 22.12.2017

SCALE : 1:100 @ 24x36

PRELIMINARY  
NOT FOR CONSTRUCTION

0 5 10 m



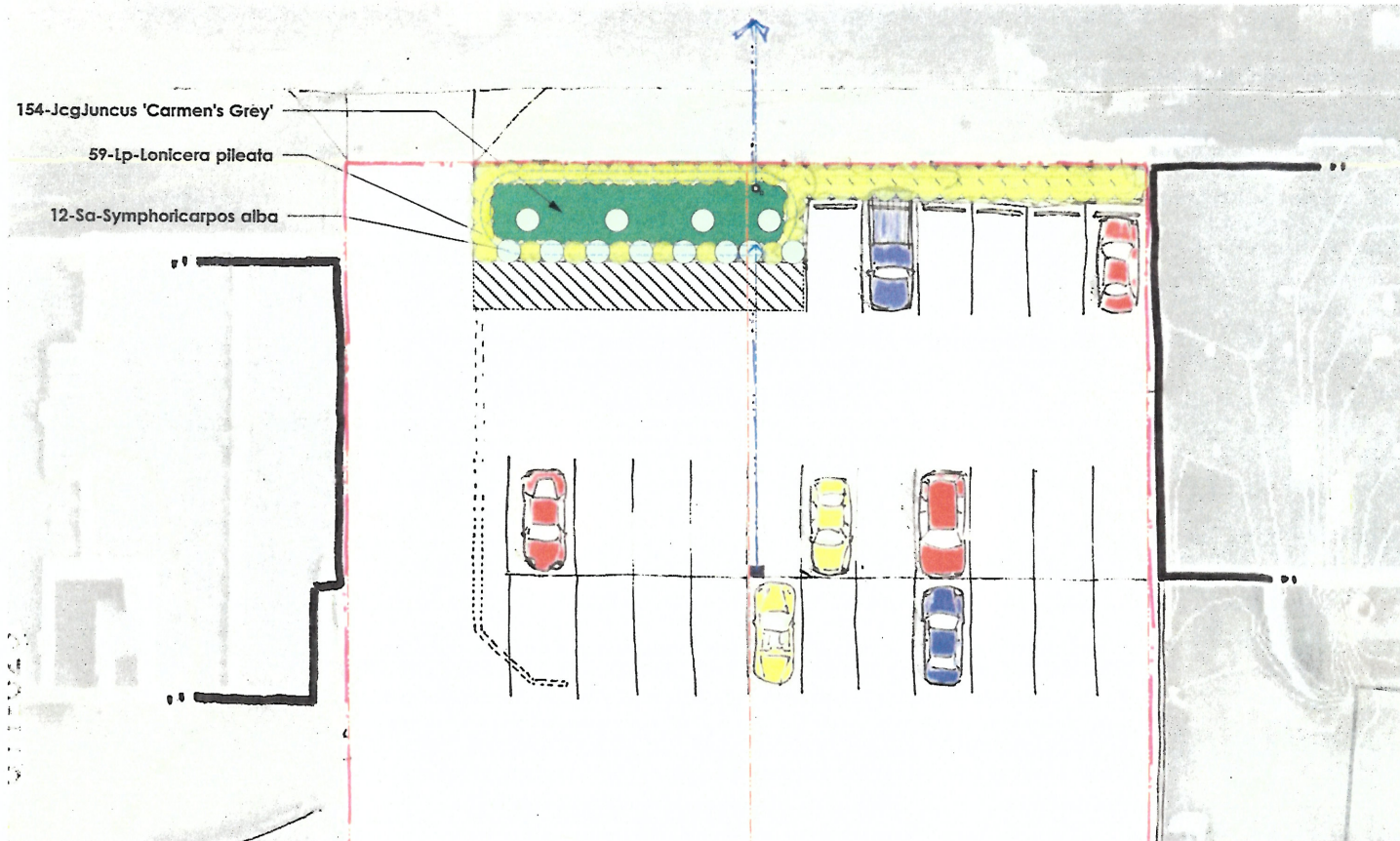
Murdoch  
de Greeff INC  
Landscape Planning & Design

200 - 524 Cuddeholme Road Phone: 250.412-2891  
Victoria, BC V8Z 1G1 Fax: 250.412-2892



#### PLANTING NOTES

1. Plant quantities and species may change between issuance of DP and Construction due to plant availability and design changes.
2. Irrigation of planting areas will be through hand watering at the owners responsibility.



#### PLANT LIST

Sym	Qty	Botanical Name	Common Name	Schd. Size / Plant Spacing
<b>RAINGARDEN:</b>				
Jcg	154	Juncus 'Carmen's Grey'	Soft Common Rush	Sp3
Lp	59	Lonicera pileata	Privet Honeysuckle	#1 pot
Sa	12	Symphoricarpos alba	Snowberry	#1 pot
	0			

## 629 & 635 Chatham Street SCHEMATIC PLANTING PLAN

DATE : 22.12.2017

SCALE : 1:100 @ 24x36

PRELIMINARY  
NOT FOR CONSTRUCTION

0 5 10 m



**Murdoch  
de Greeff INC**  
Landscape Planning & Design

200 - 524 Cuthbert Road  
Victoria, BC V8Z 1G1  
Phone: 250.412-2891  
Fax: 250.412-2892

