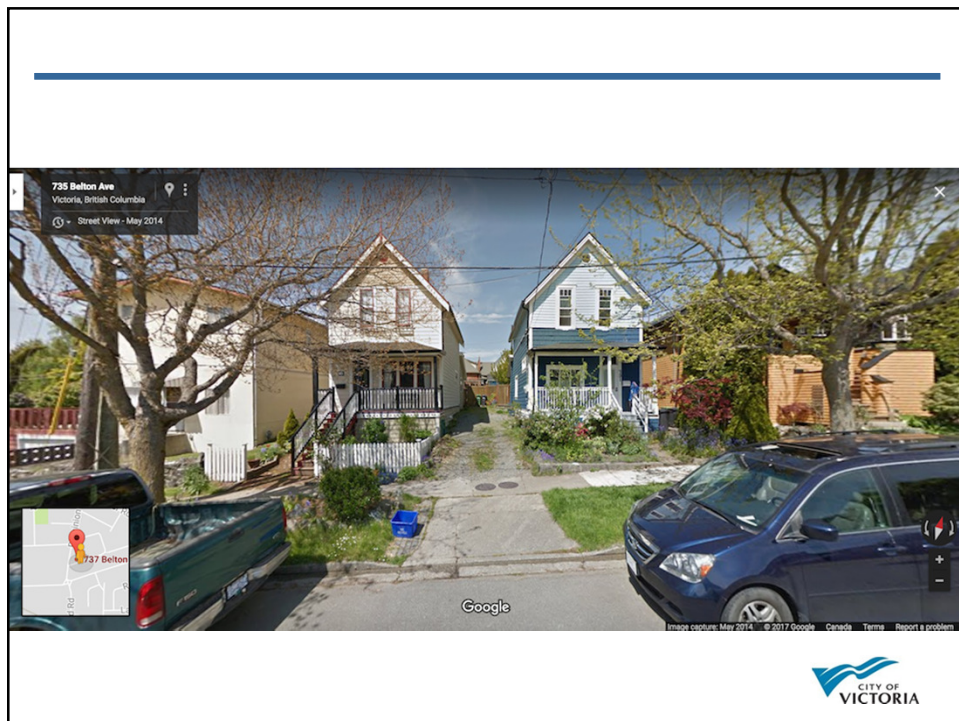
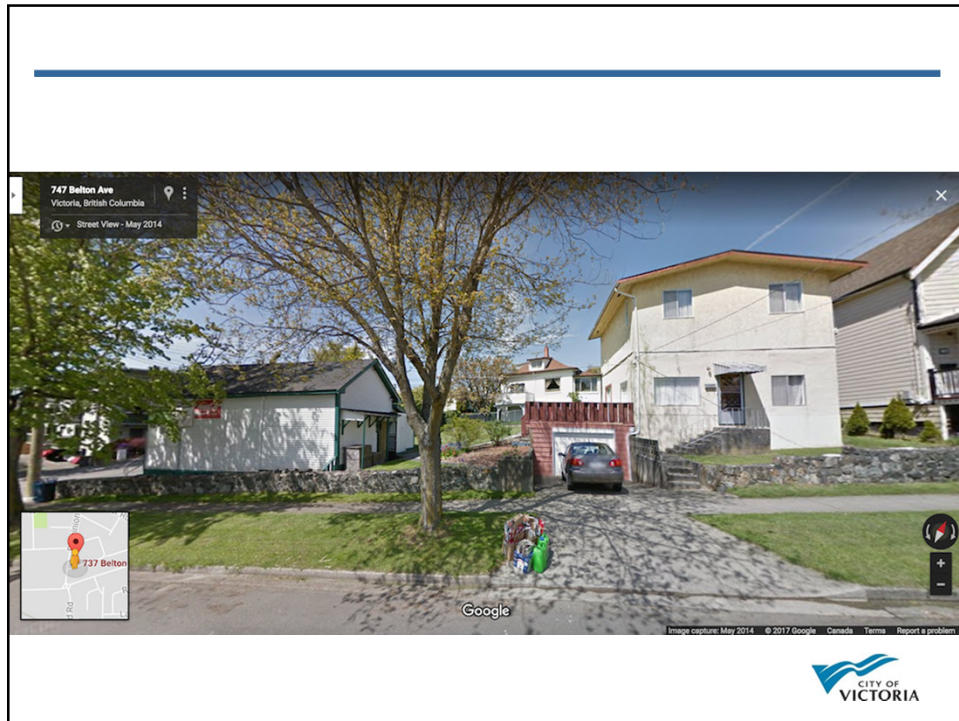
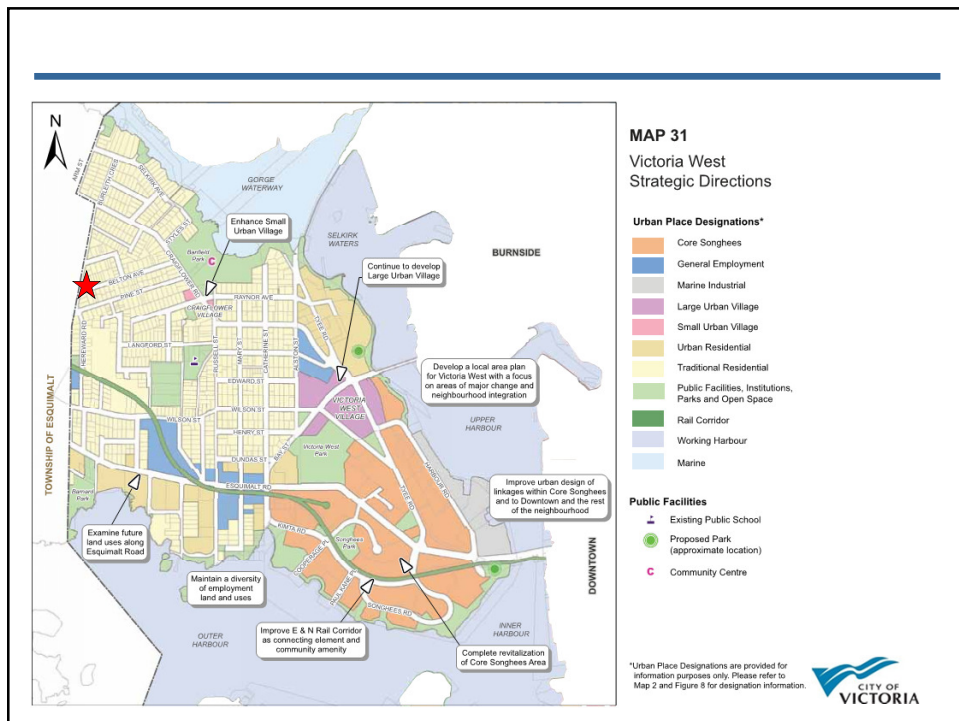
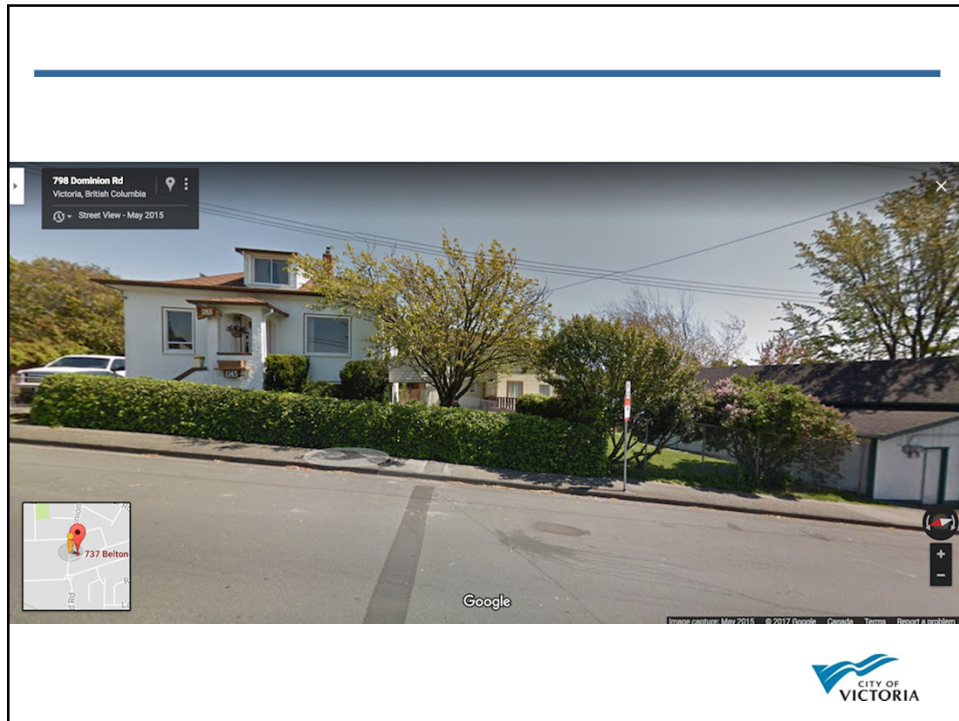


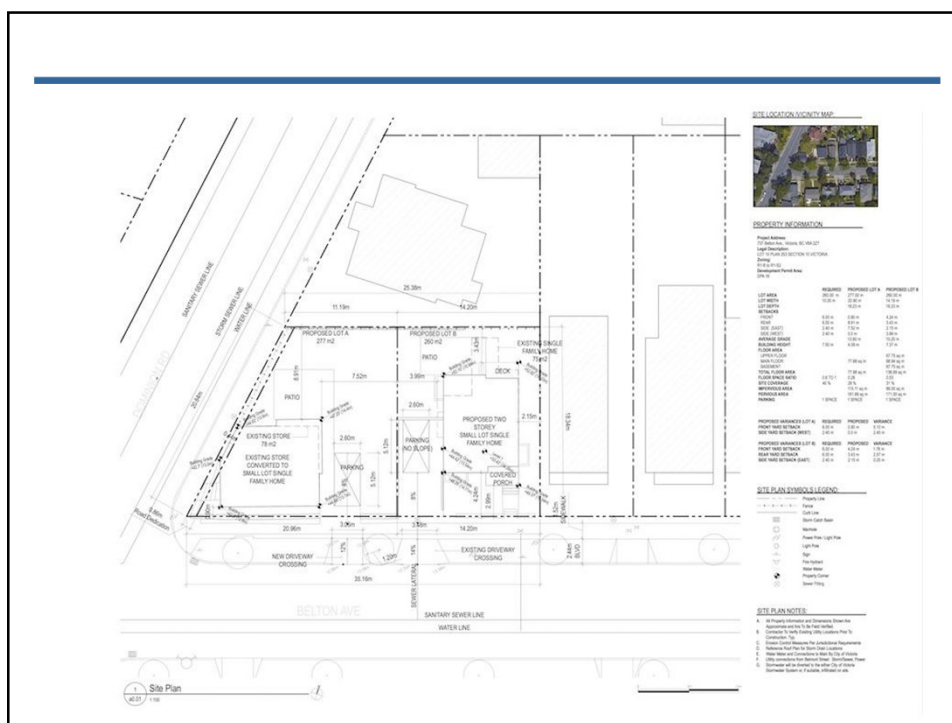
---

Rezoning and Development  
Permit with Variances  
Application  
for  
737 Belton Avenue and 1137  
Dominion Road











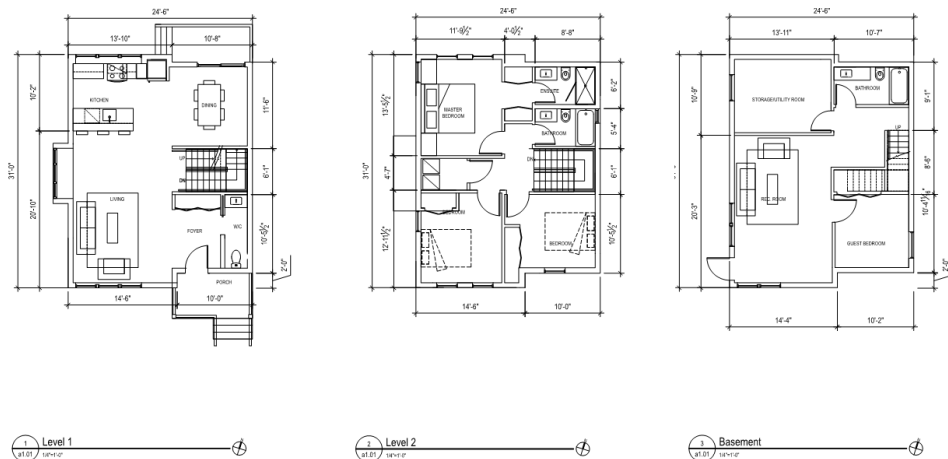
## Lot A



## Lot A

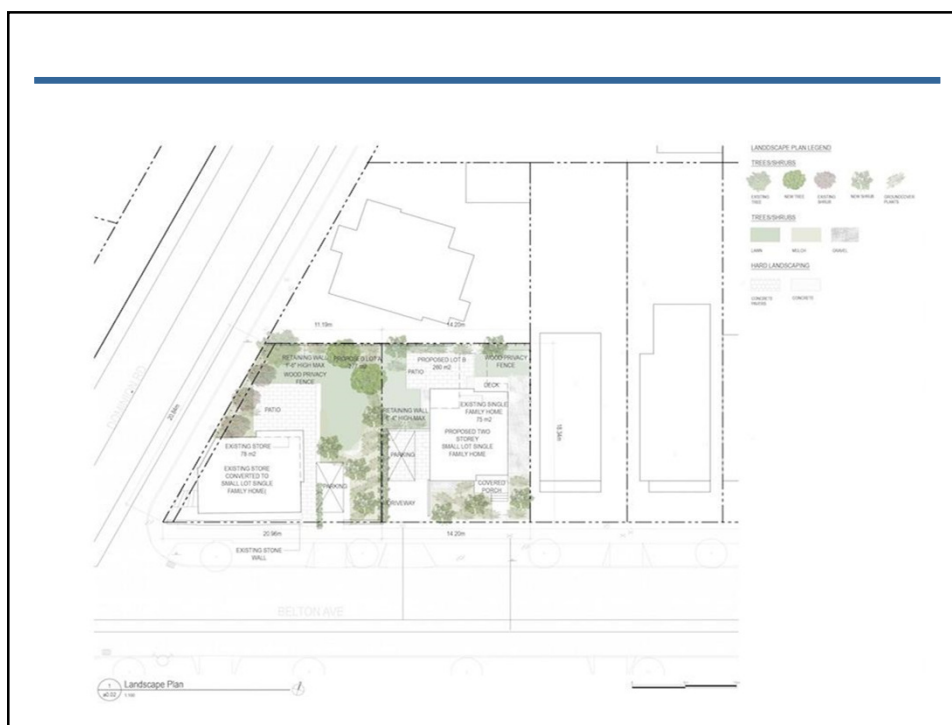


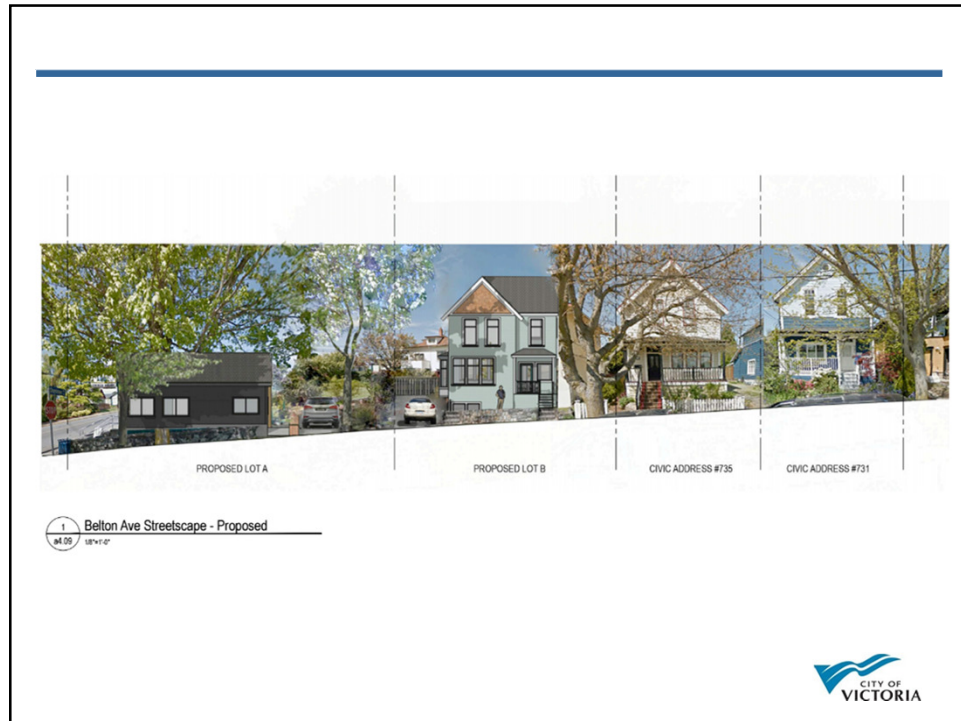
## Lot B



## Lot B









## Renderings



### COLOUR/MATERIAL LEGEND

- 1) Store - Fascia/foundation
- 2) Store - Painted siding
- 3) Store - Window/door/trim
- 4) Store - Wood siding
- 5) House - Siding
- 6) House - Fascia/trim/fence
- 7) House - Window
- 8) House - Decorative shingle
- 9) House and Store - Roof
- 10) House - Foundation

- BM - Grey
- BM - Space Black
- Sikkens Butternut Stain
- Cedar board - clear stain
- BM - Seaclyff Heights
- Chantilly Lace
- BM - Mallard Green
- Cedar shake - clear stain
- Asphalt shingle
- Finished concrete



1) BM - Grey



2) BM - Space Black



5) BM - Seaclyff Heights



5) BM - Chantilly Lace



7) BM - Mallard Green



4) Cedar board - clear stain



3) Sikkens Butternut stain



9) Asphalt roof



10) Finished concrete



8) Cedar shake - clear stain