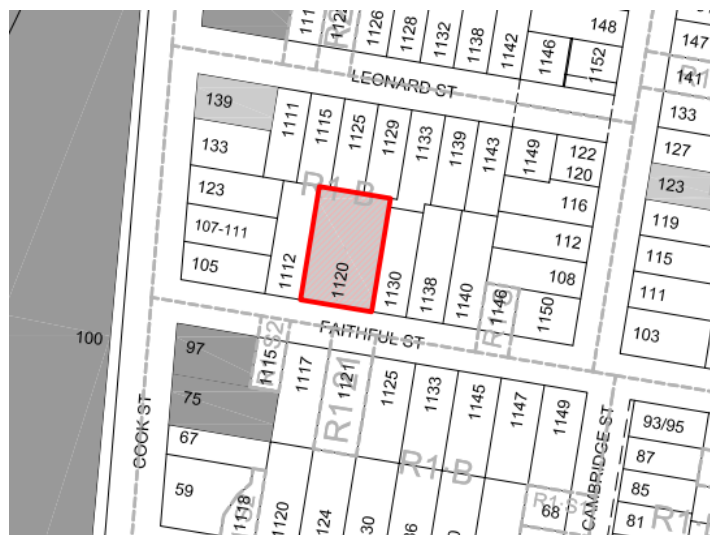


Heritage Designation Application

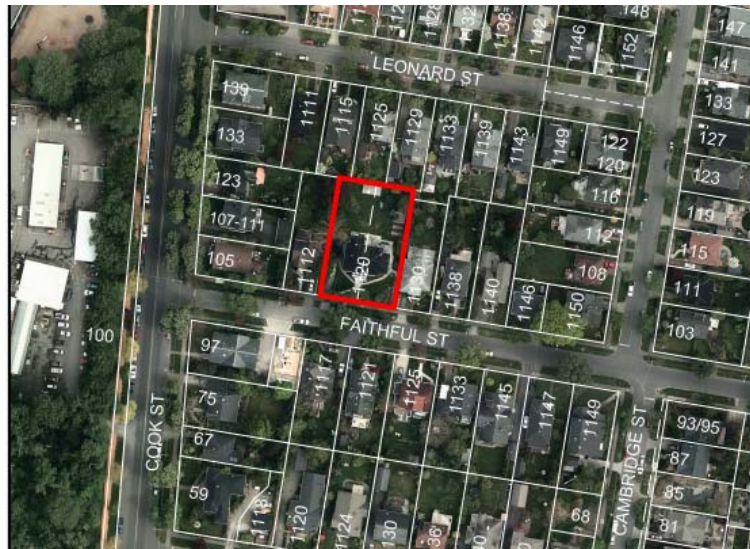
1120 Faithful Street
(Yaxley)



Location | 1120 Faithful Street



Location | 1120 Faithful Street



1120 Faithful Street – constructed in 1912



1120 Faithful Street – designed by D.H. Bale for Robert Lettice



1120 Faithful Street – bellcast roof, dormers, dominating chimneys



1120 Faithful Street – classical portico entrance



1120 Faithful Street – modillions, decorative glass, projecting window bays



1120 Faithful Street

