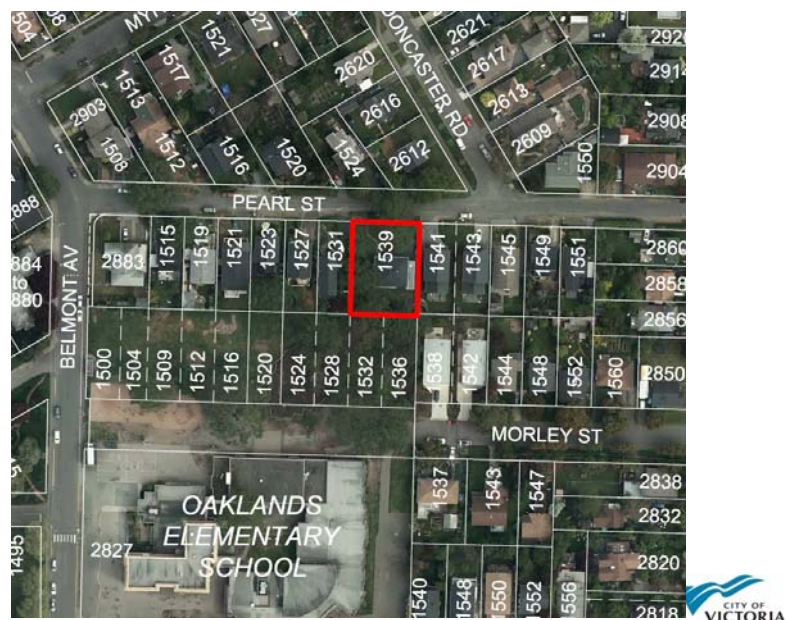


---

Rezoning and Development  
Permit with Variances  
Application  
for  
1539 Pearl Street



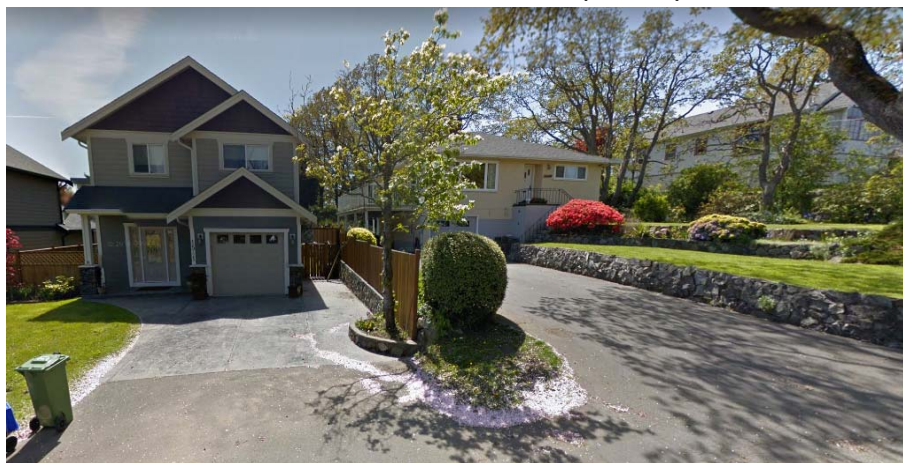
---

Current 1539 Pearl Street (East)



---

1541 Pearl Street (East)



---

### 1531 Pearl Street (West)



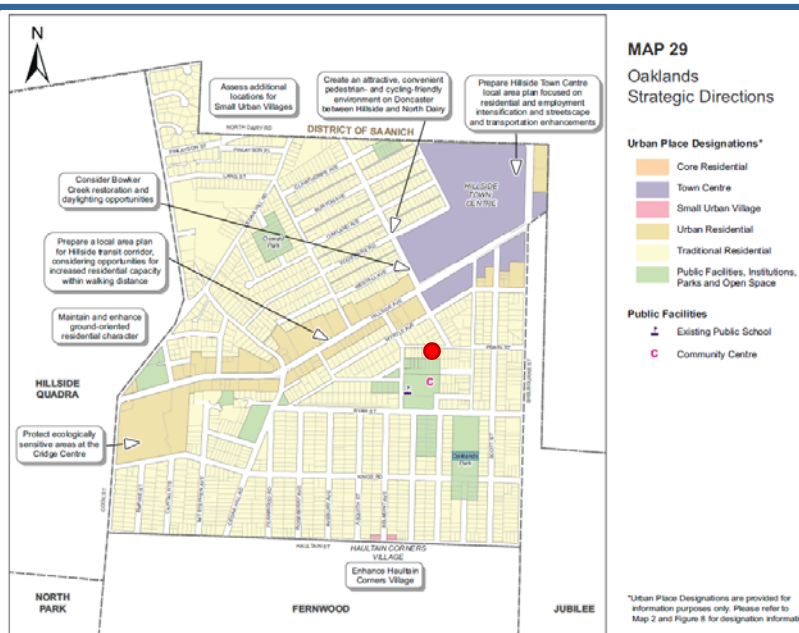
---

### 1524 Pearl Street (North)

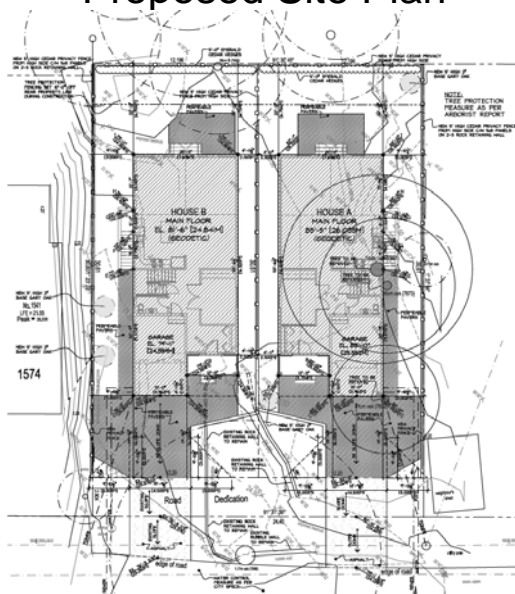




## 1524 Pearl Street (North-East)

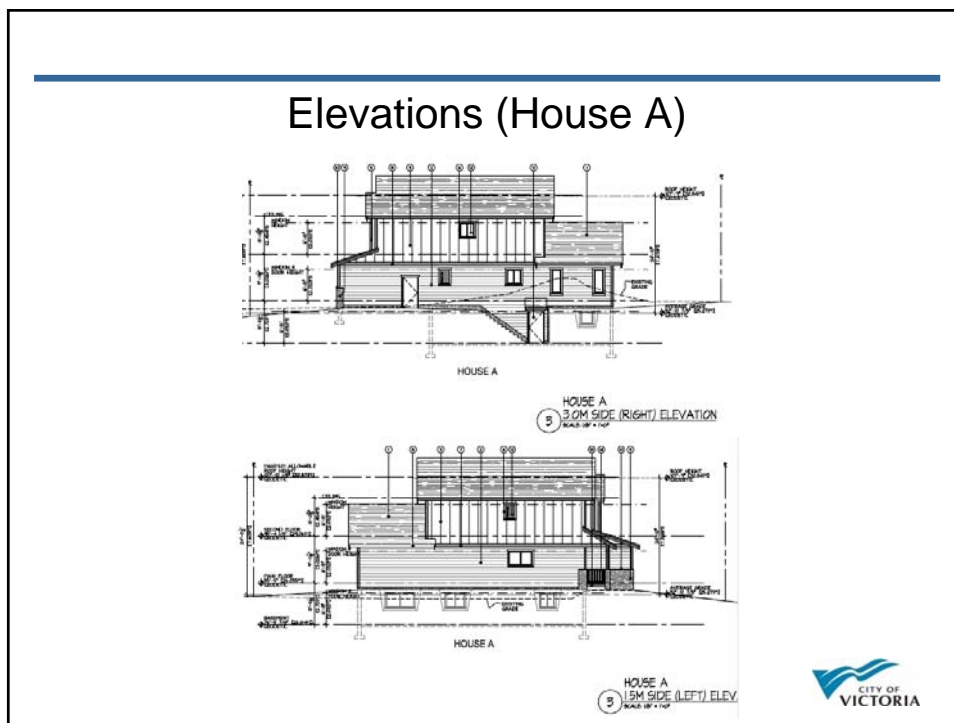
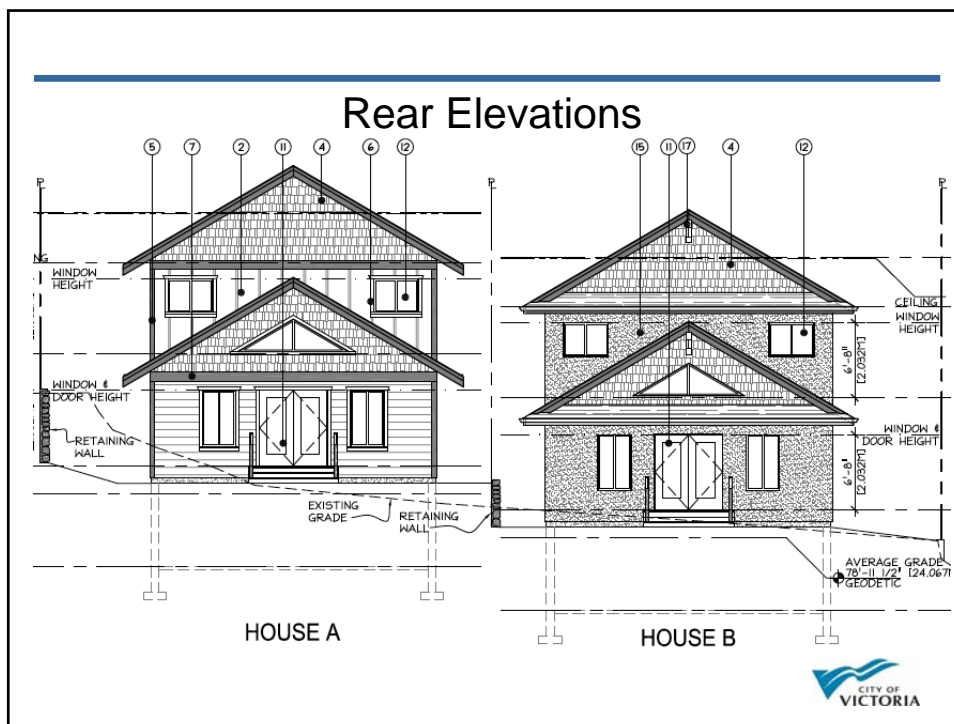


## Proposed Site Plan

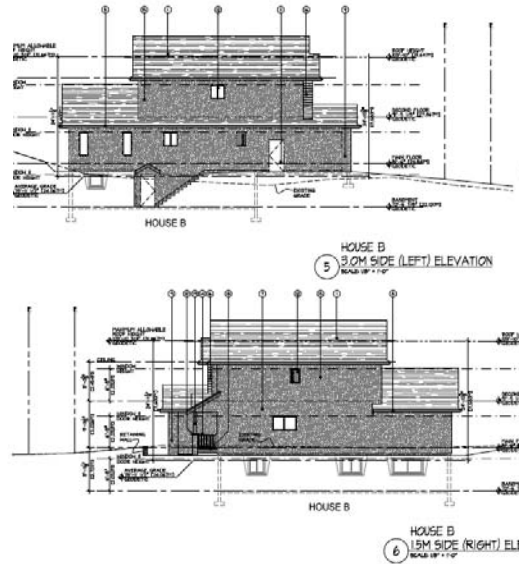


## Front Elevations

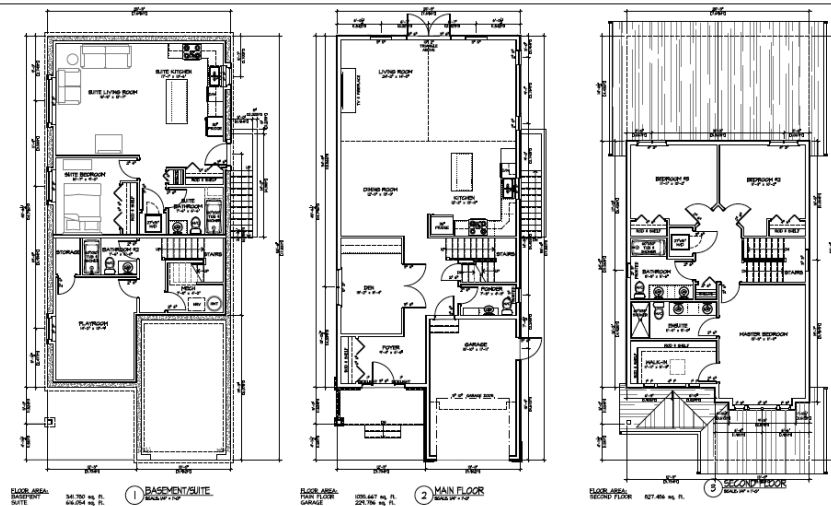




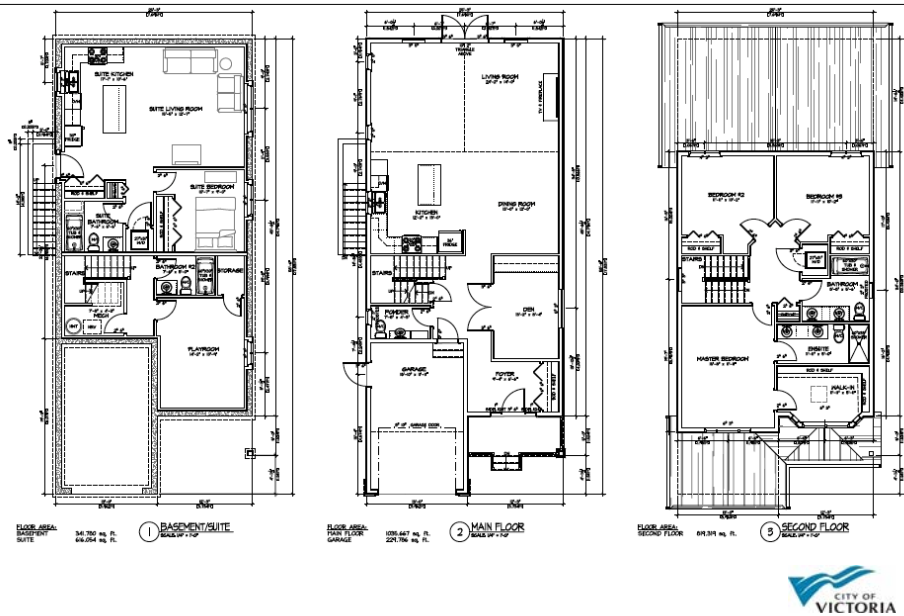
## Elevations (House B)



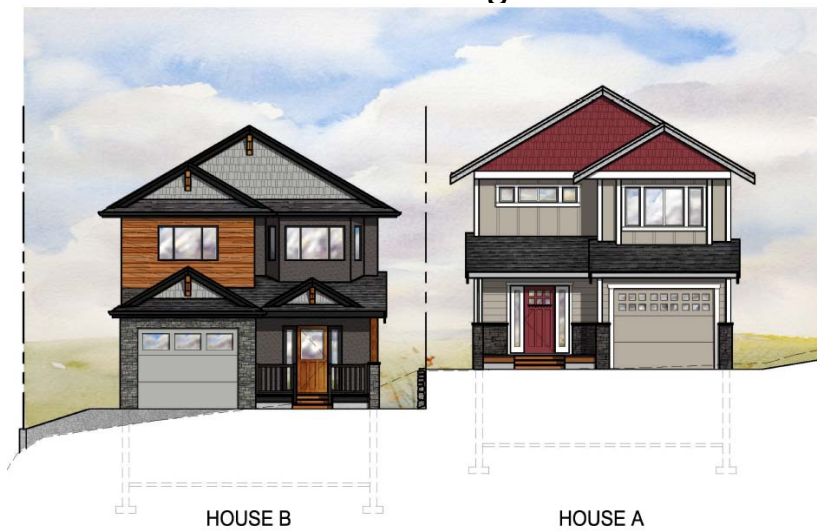
## Floor Plan (House A)



## Floor Plan (House B)



## Renderings





## Landscape Plan



## Front Streetscape



shown without Garry Oak



## Colour Board

### House A Colour Board



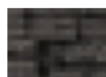
Cloverdale Paint Soft Silver (EX026)



Cloverdale Paint True North (EX033)



Cloverdale Paint Standard White (EX083)



Dark Ridge Pro-fit Alpine Ledge stone

### House B Colour Board



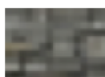
Cloverdale Arabica (EX018)



Cloverdale Paint Ash (EX023)



Behr Cedar Natural Tone (ST-533)



Echo Ridge Country Ledge stone

