



Context | Existing Site



Motion | January 12, 2017 – Six Items Referred to Joint Panel



1. Scale and OCP policy
2. Removal and relocation of designated elements
3. Compatibility, subordination, distinguishability
4. Conservation Plan detail
5. The moving and raising of the Cartreff house
6. Respect for, and retention of, historic landscaping



Item 1 | Relationship Between Scale and OCP Policy



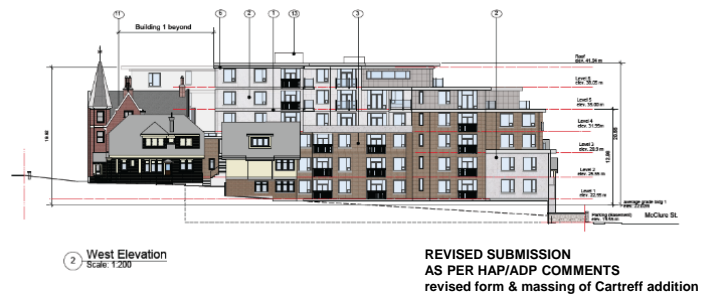
Item 2 | Appropriate Response to Standard 1



Item 3 | Appropriate Response to Standard 11



Item 3 | Appropriate Response to Standard 11



Item 4 | Conservation Plan and National Standards and Guidelines



JOINT HAP/ADP SUBMISSION



REVISED SUBMISSION
AS PER HAP/ADP COMMENTS
revised south west corner of south wing
revised stair of Temple Residence



Item 4 | Conservation Plan and National Standards and Guidelines



Item 5 | Moving and Raising of the Cartreff House



Item 6 | Respect and Retain Historic Landscaping

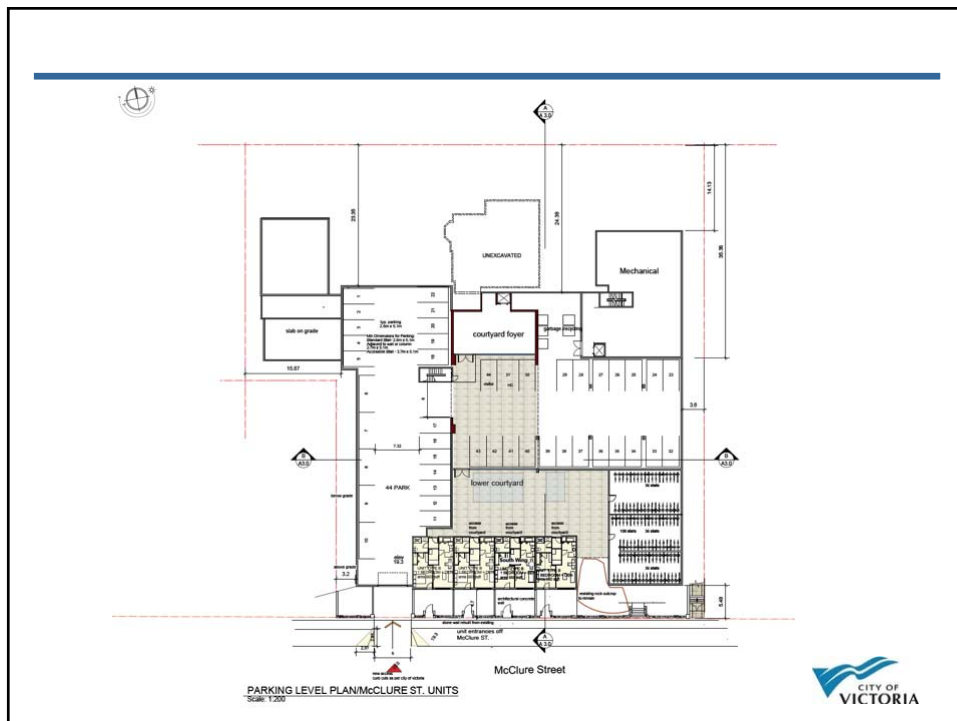
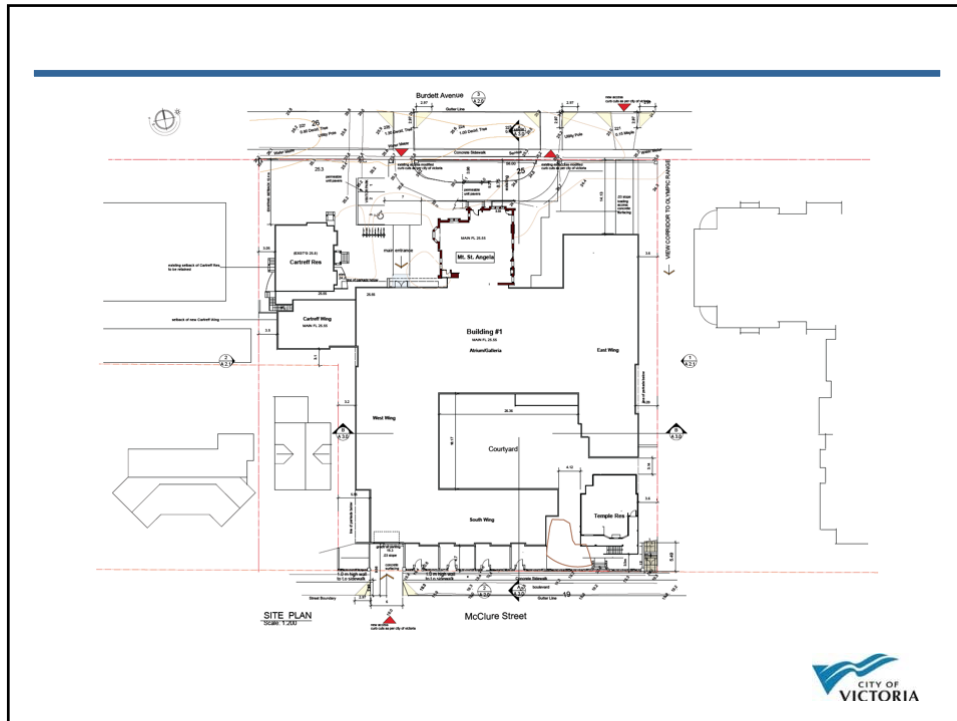


Conclusions

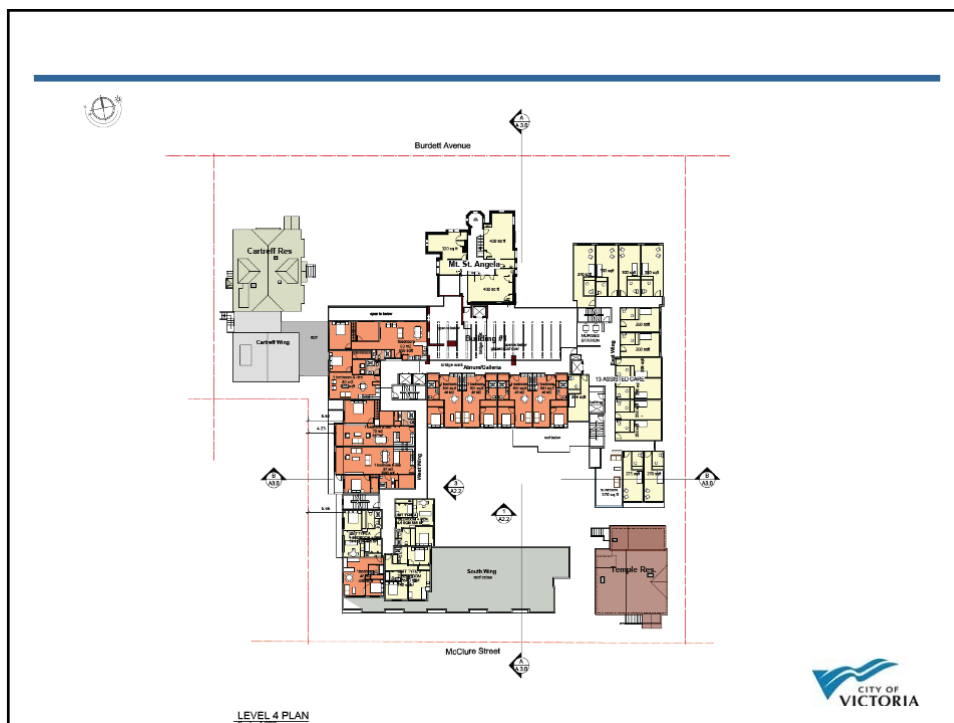
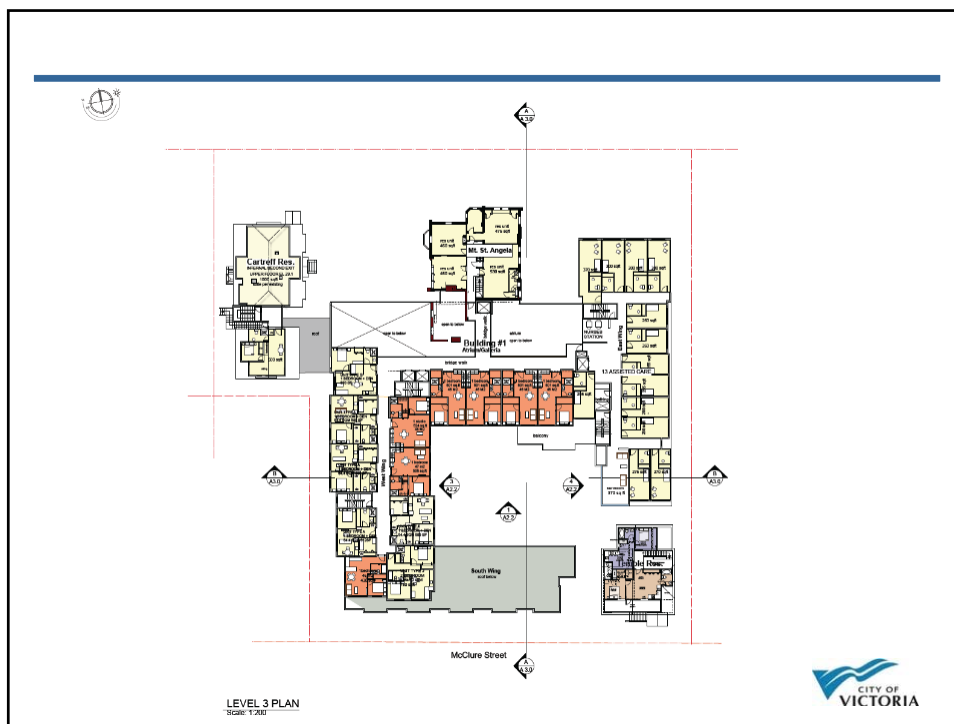


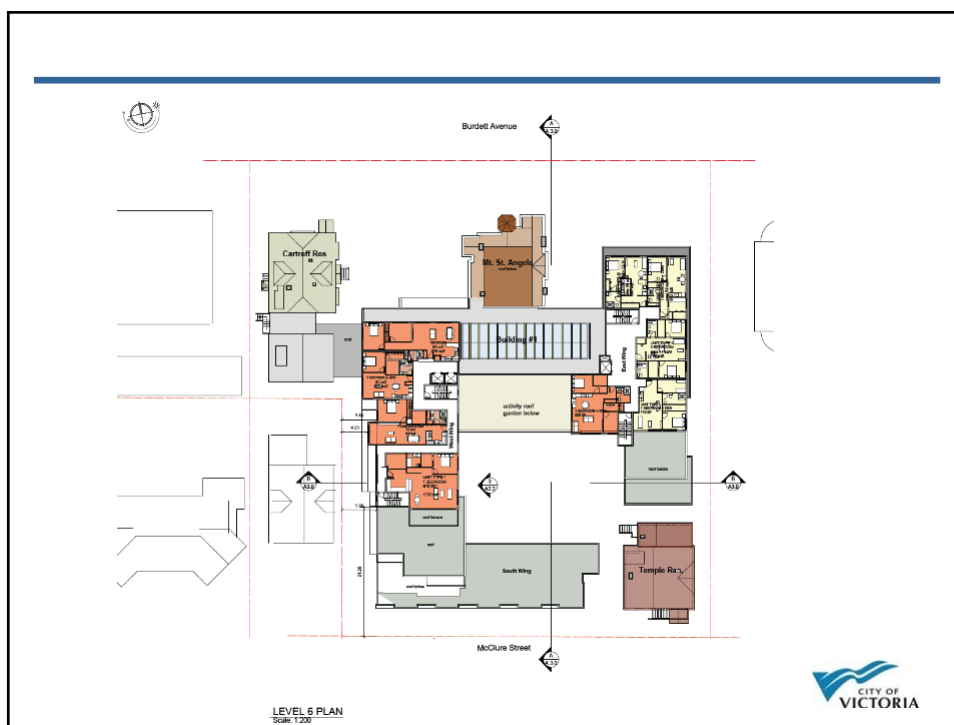
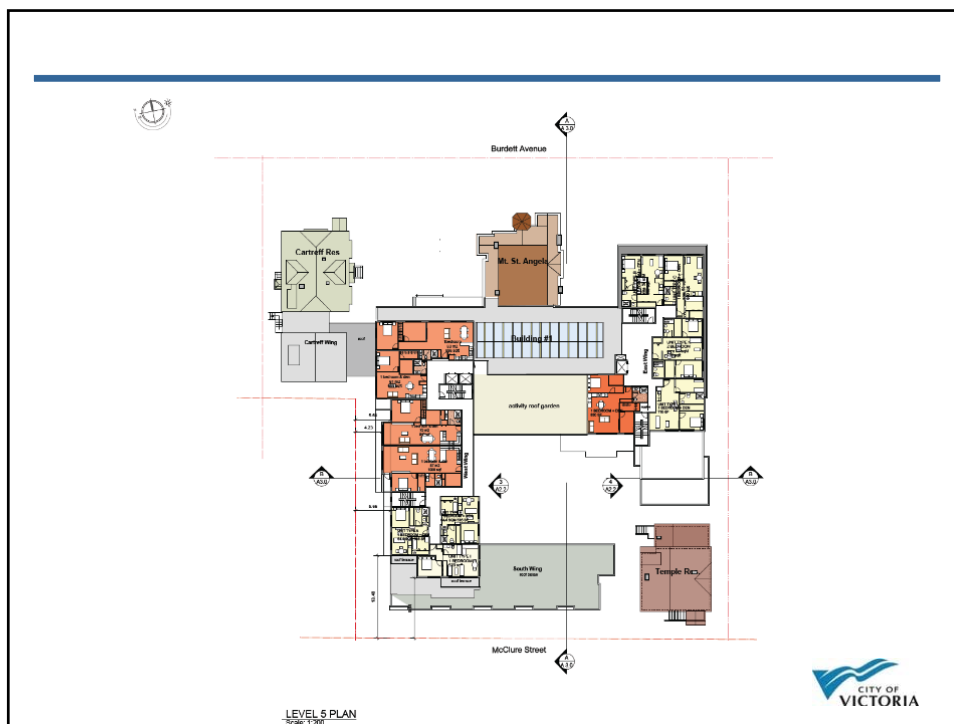
Item 6 | Respect and Retain Historic Landscaping

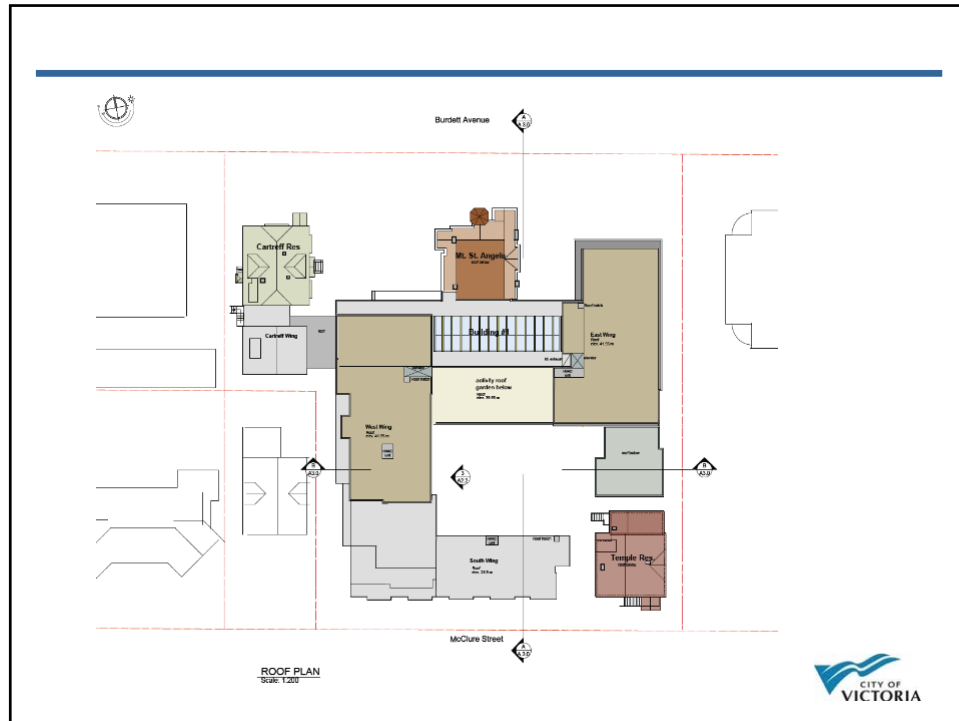


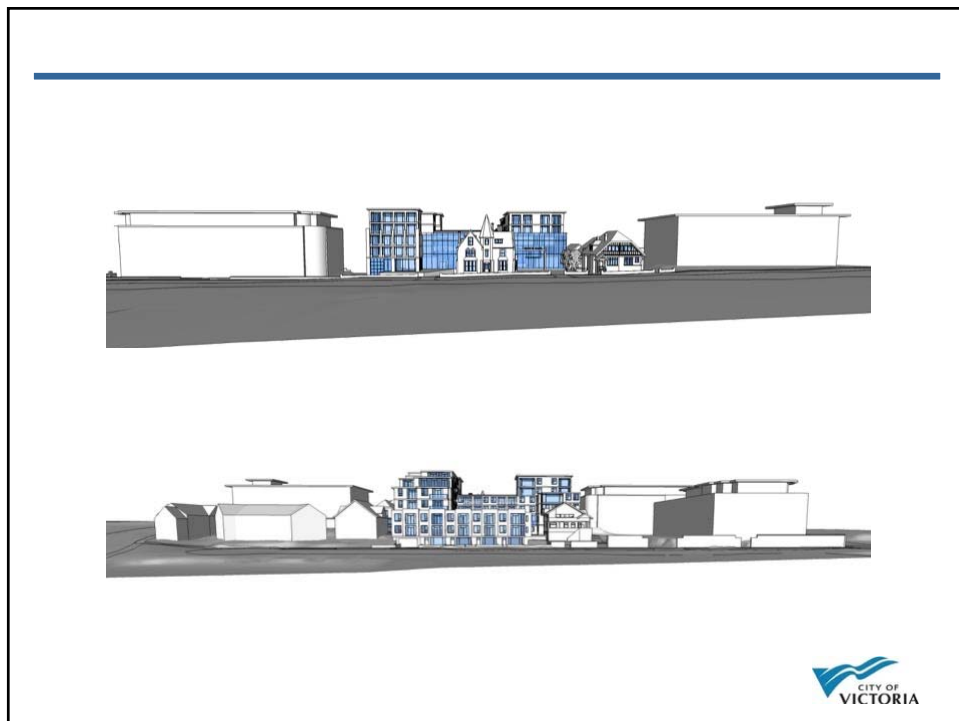


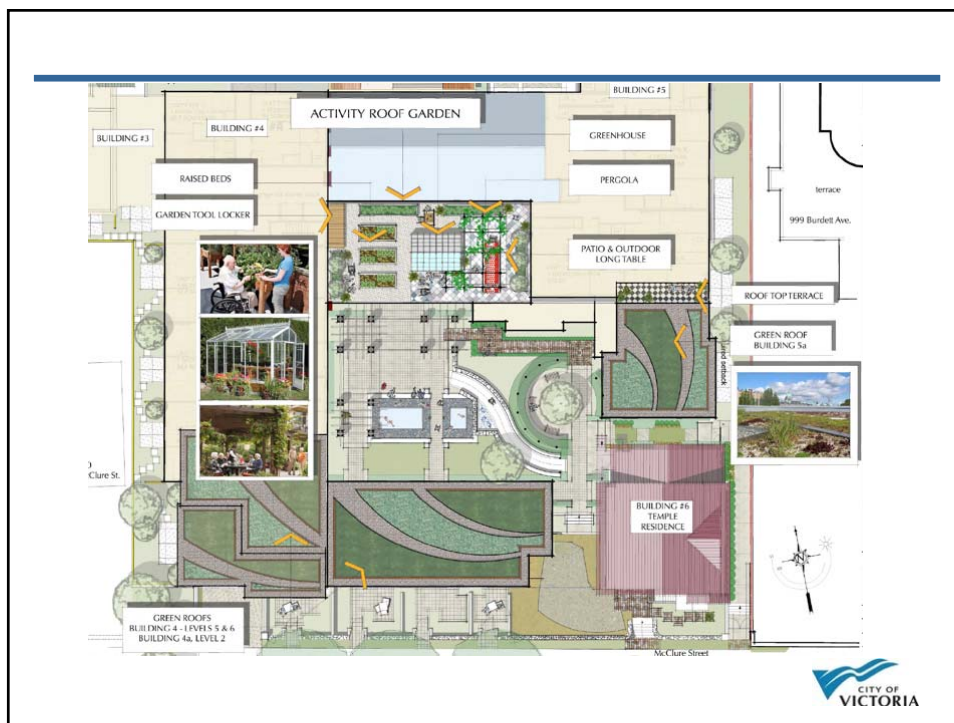


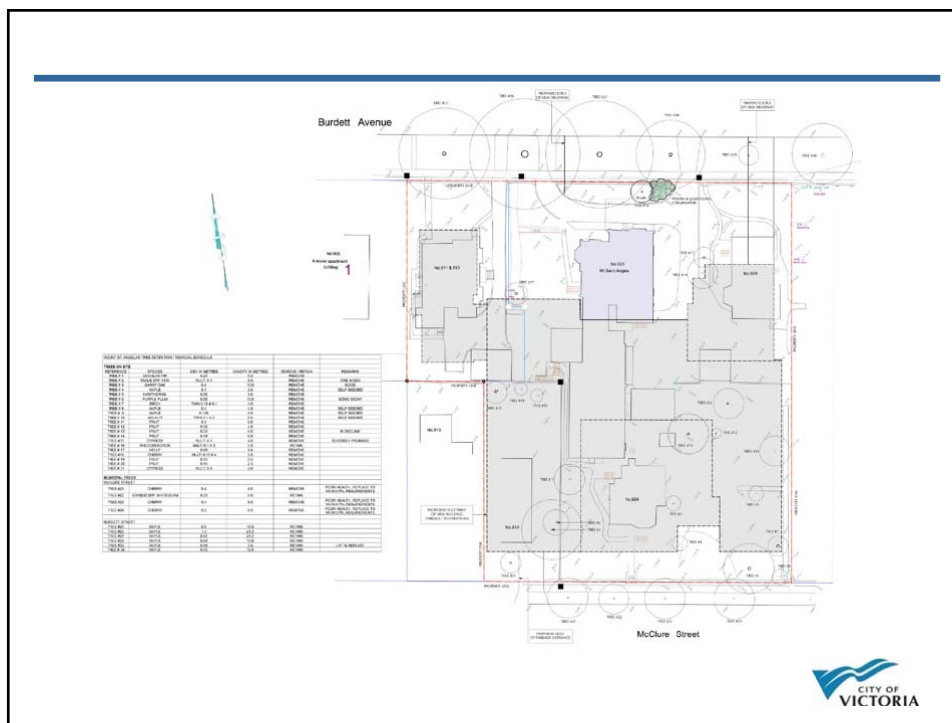
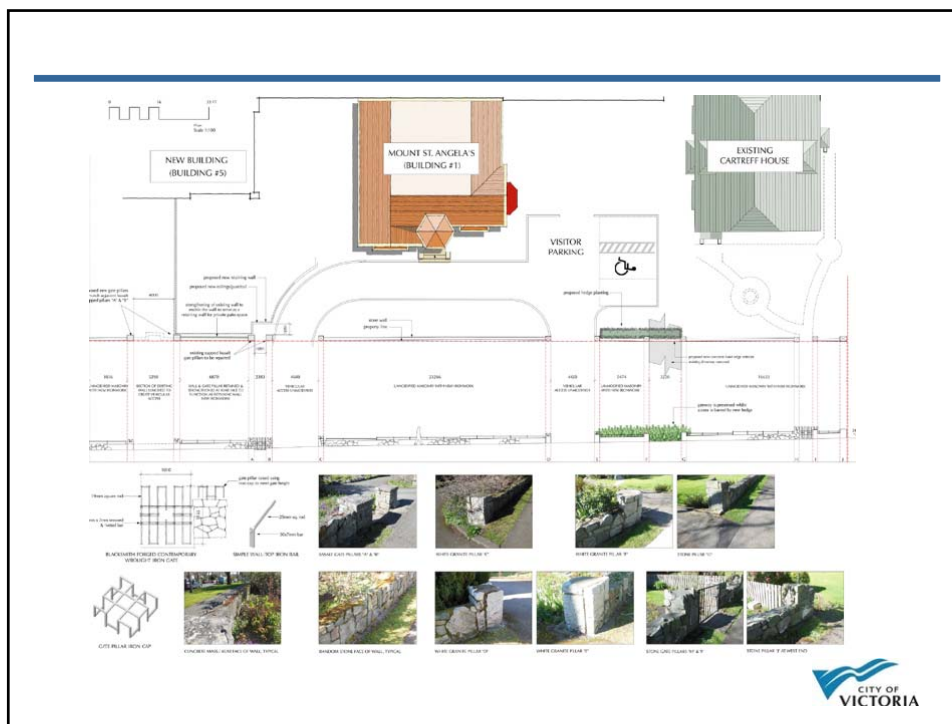


















JOINT HAP/ADP Revisions



