
REZONING AND
DEVELOPMENT PERMIT
FOR
1144, 1152 + 1154 JOHNSON ST.
+ 1406 CHAMBERS ST.





VIEW FROM JOHNSON STREET (SOUTH ELEVATION)



VIEW FROM JOHNSON STREET CONTINUES EAST (1200 BLOCK JOHNSTON STREET)



VIEW FROM CHAMBERS STREET (EAST ELEVATION)

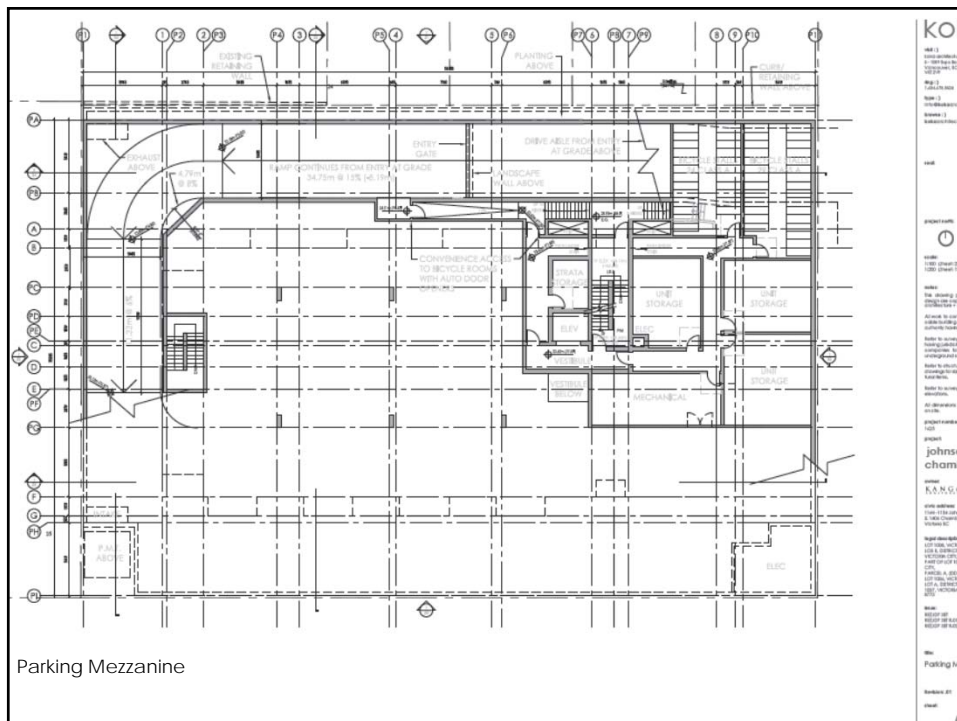
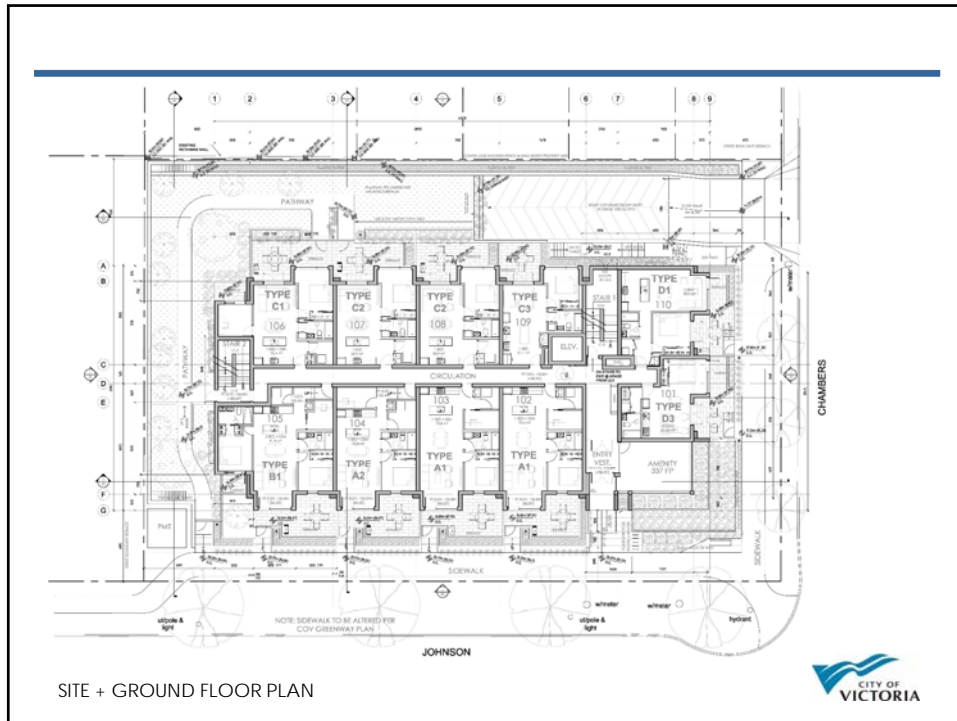


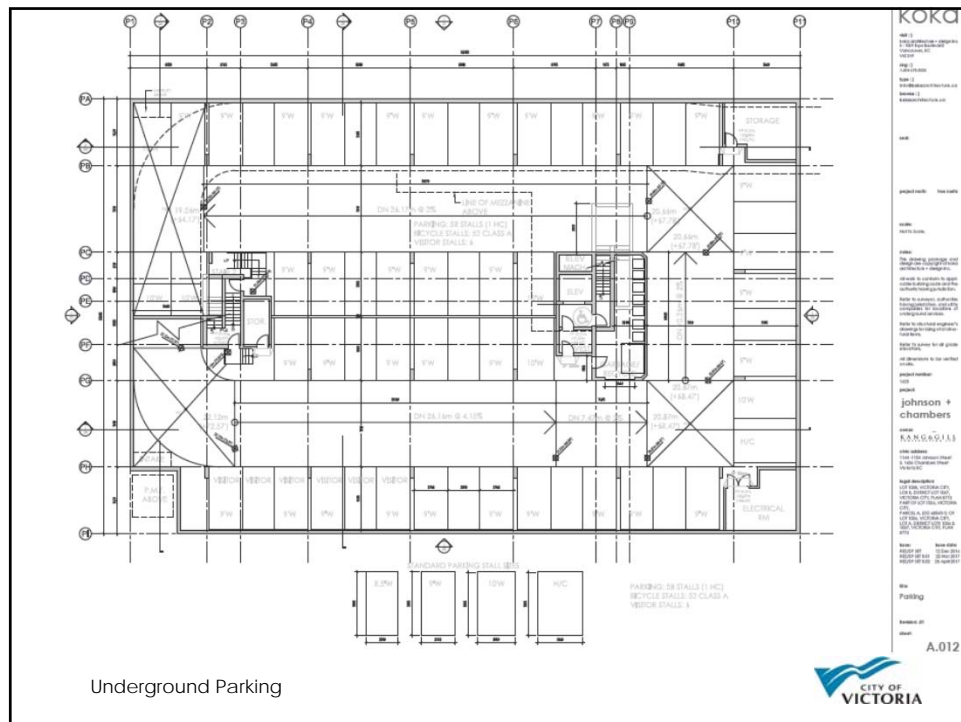
VIEW OF JOHNSON STREET FROM SOUTH EAST CORNER



LOOKING SOUTH ALONG CHAMBERS STREET TOWARDS JOHNSON, SUBJECT SITE IN ON THE WEST SIDE OF THE STREET









SKETCH OF MAIN ENTRY ALONG JOHNSON STREET



1. BRICK (WARM GREY)

2. PREFORMED METAL PANELS (WARM WHITE)

3. CEMENTITIOUS PANEL (IND-TONE GREY)

4. WINDOW WALL / ALUMINIUM FRAME

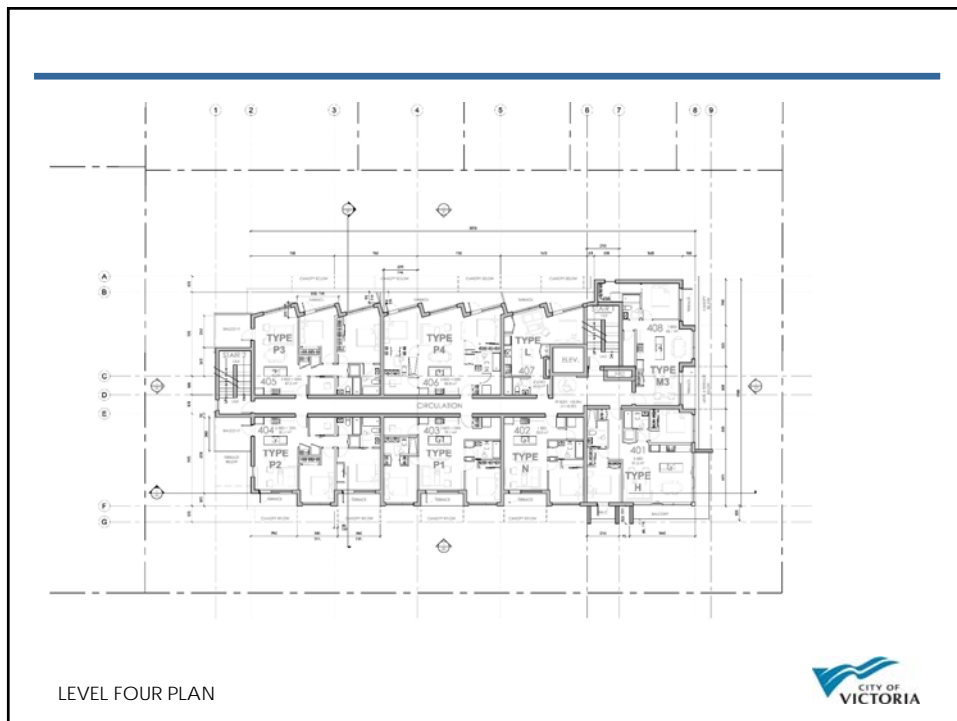
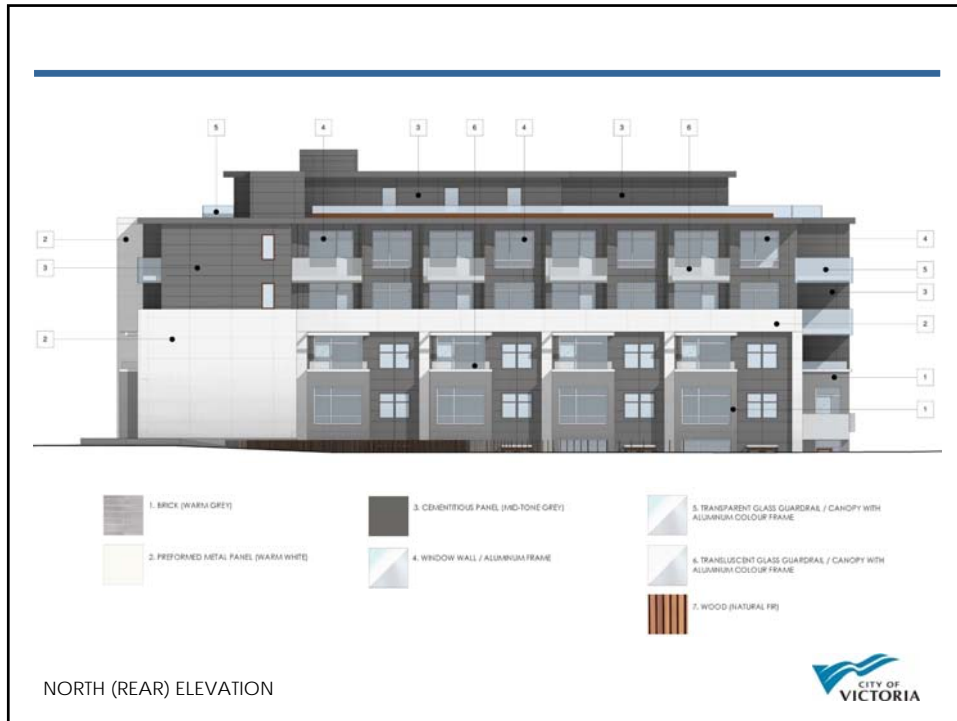
5. TRANSPARENT GLASS GUARDRAIL / CANOPY WITH ALUMINIUM COLOUR FRAME

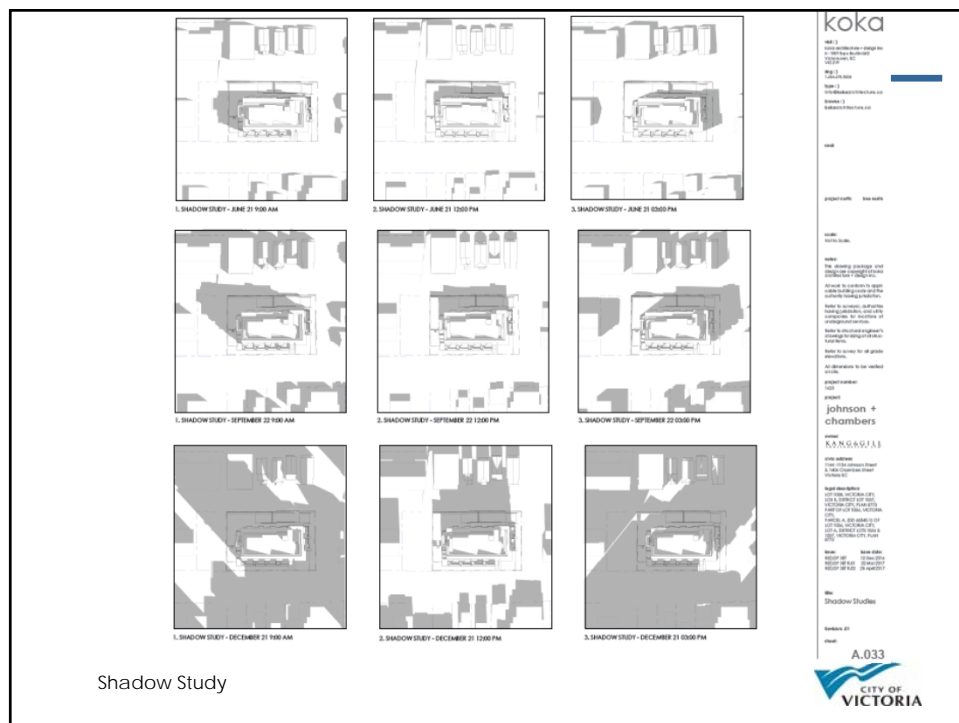
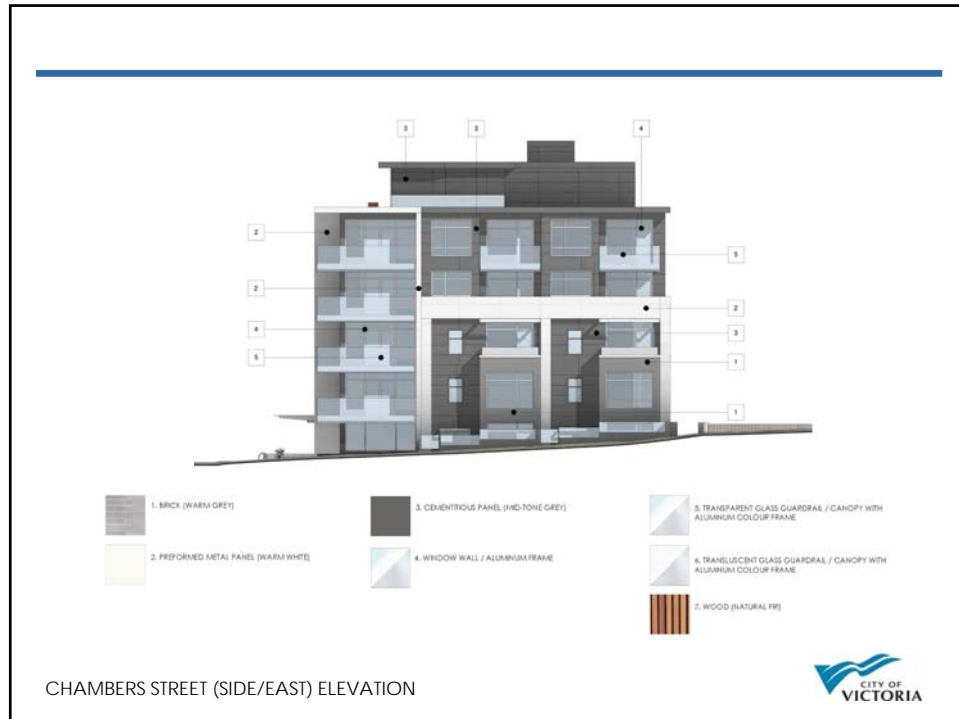
6. TRANSLUCENT GLASS GUARDRAIL / CANOPY WITH ALUMINIUM COLOUR FRAME

7. WOOD (NATURAL FIN)

JOHNSON STREET (FRONT/SOUTH) ELEVATION









VIEW FROM SOUTHWEST ALONG JOHNSON STREET



VIEW FROM SOUTHEAST ALONG JOHNSON STREET

