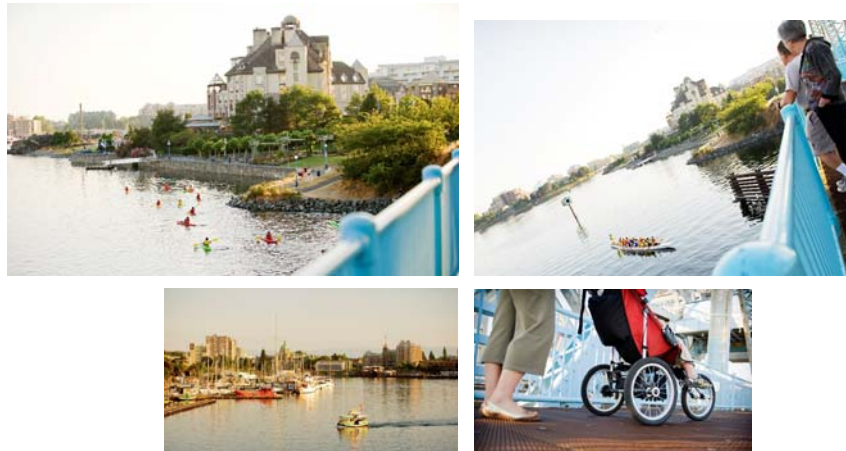


## Johnson Street Bridge Public Realm Update



December 3, 2015

[JohnsonStreetBridge.com](http://JohnsonStreetBridge.com)



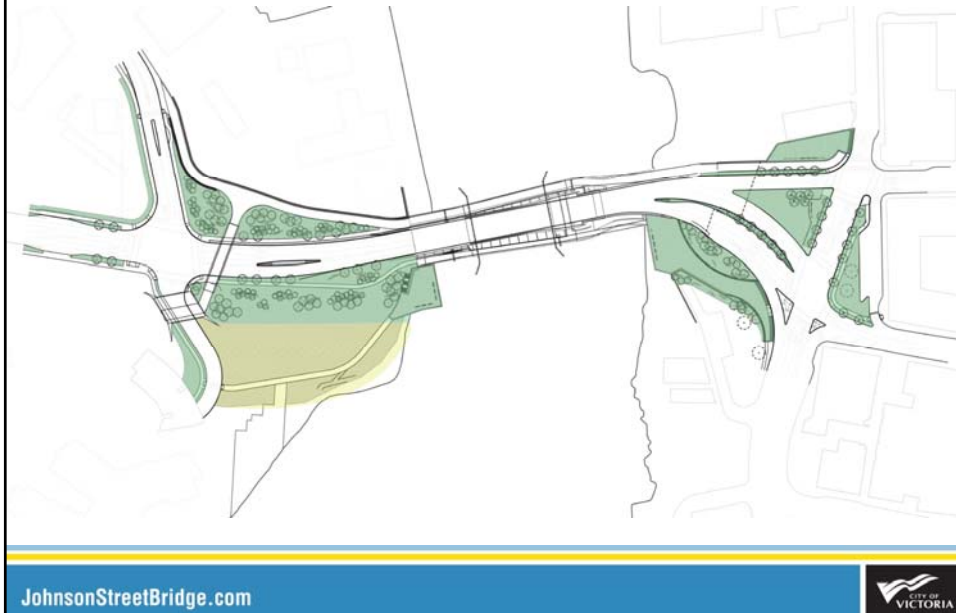
## Background

- The bridge project presents an opportunity to revitalize portion of Victoria's waterfront across two neighbourhoods: Victoria West and Downtown.
- Last August, Council directed staff to proceed with public engagement on urban design of the public realm areas around the bridge and report back to Council with a public realm design and corresponding budget options.

[JohnsonStreetBridge.com](http://JohnsonStreetBridge.com)



## Public Realm Areas



## Background

In October, the City hosted a design workshop involving more than 25 people representing:

- Downtown and Victoria West Community Associations
- Downtown Victoria Business Association
- Reliance Properties and Merrick Architecture
- City's new Accessibility Task Force
- Delta and Swans Hotels
- Ralmax
- PCL and MMM
- Staff and members of Council

## Background

- Participants walked the area and then worked together to discuss design challenges and opportunities for use of space, connectivity, accessibility, art, and placemaking.
- New ideas and directions for the design of new public spaces created by bridge construction were developed by the group.

JohnsonStreetBridge.com



## Downtown North Plaza (Original)



## Downtown North Plaza (New)





## Downtown South Plaza (Original)



JohnsonStreetBridge.com



## Downtown South Plaza – Concept A



JohnsonStreetBridge.com



## Downtown South Plaza – Concept B



JohnsonStreetBridge.com



## South West Plaza Original Concept



JohnsonStreetBridge.com





## South West Plaza and Green Space Concept A



JohnsonStreetBridge.com



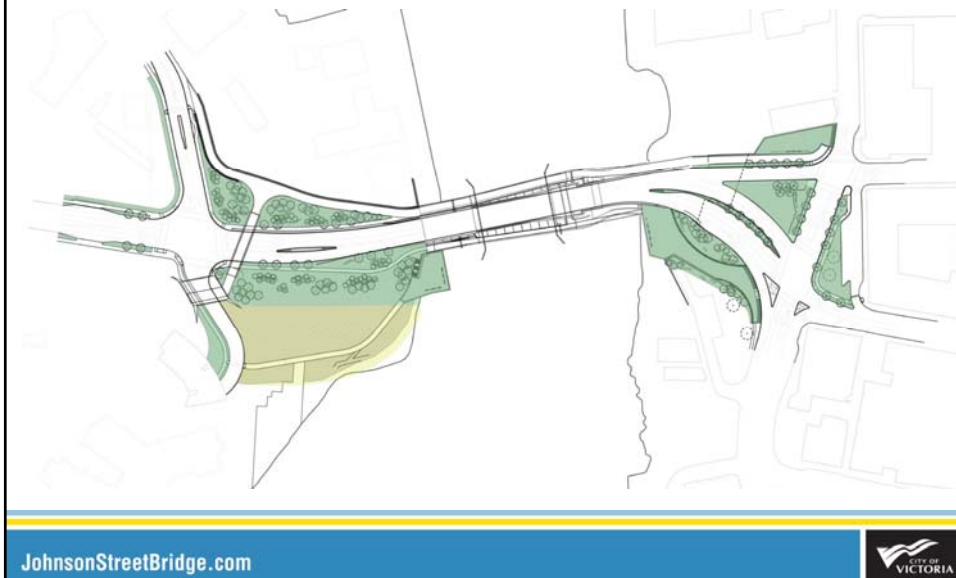
## South West Plaza and Green Space Concept B



JohnsonStreetBridge.com



## Pedestrian Bridge



## Pedestrian Bridge

- The indicative design contemplated a custom structure connecting the E&N and Goose trails.
- Detailed design and subsequent analysis identified an alternative approach of a prefabricated steel structure.
- Landscape enhancement options aimed at integrating the pedestrian bridge into the overall public realm concept were also developed for public review.



## Pedestrian Bridge – Concept A



JohnsonStreetBridge.com



## Pedestrian Bridge – Concept B



JohnsonStreetBridge.com



## Next Steps

- Work with the Downtown and Victoria West community associations to co-host an event with the broader community in February.
- Concepts to be presented to the community to identify preferred options or elements.
- An online opportunity for input would also be available.

JohnsonStreetBridge.com



## Next Steps

- Results of broader public input will be shared with Council along with cost estimates for the preferred elements identified by the community.
- Staff will also recommend funding options and a phasing strategy for Council consideration in March 2016.

JohnsonStreetBridge.com



**Thank You**

[JohnsonStreetBridge.com](http://JohnsonStreetBridge.com)

