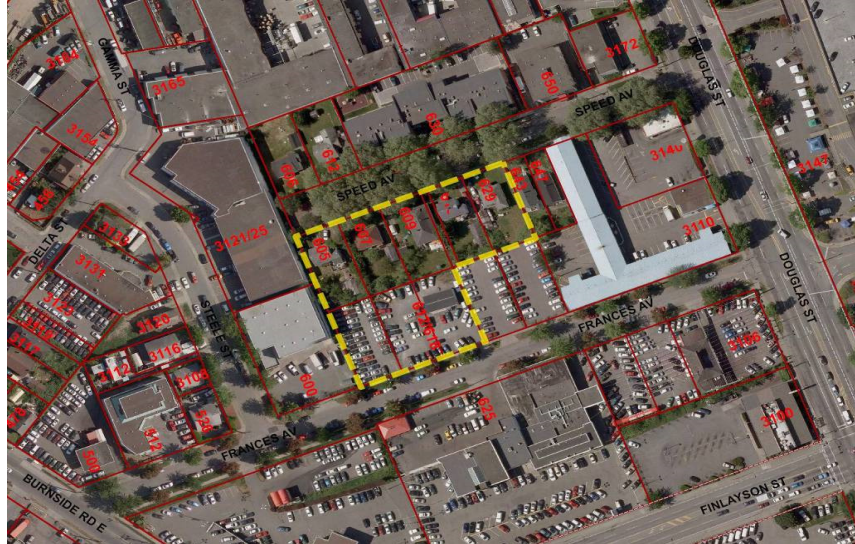
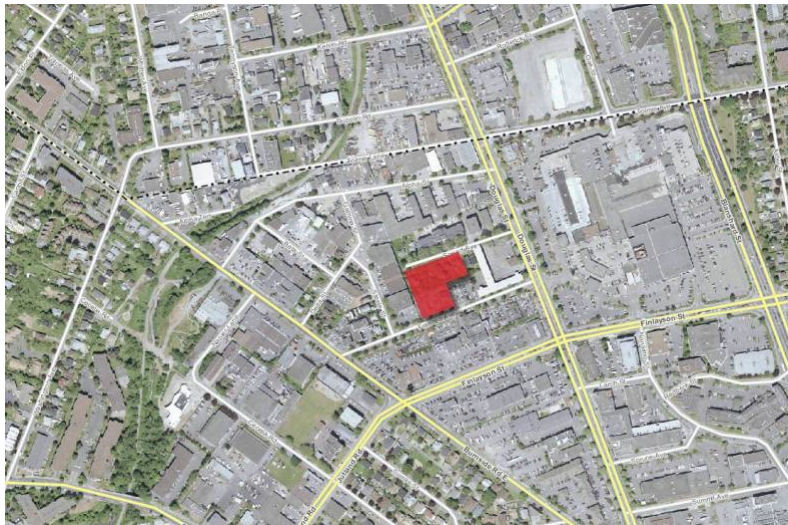


**Update on Rezoning Application for 605-629 Speed Avenue and  
606-618 Frances Avenue**



**Neighbourhood Context**



**South side of Speed Avenue**



**South side of Speed Avenue**





**South side of Speed Avenue**



**606 to 618 Frances Avenue**



## 606 to 618 Frances Avenue

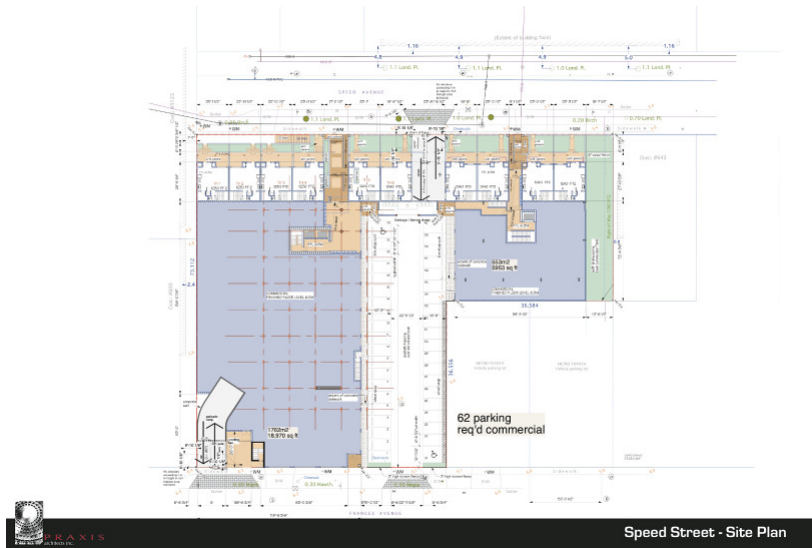


## Street Elevations Original Proposal – 2011

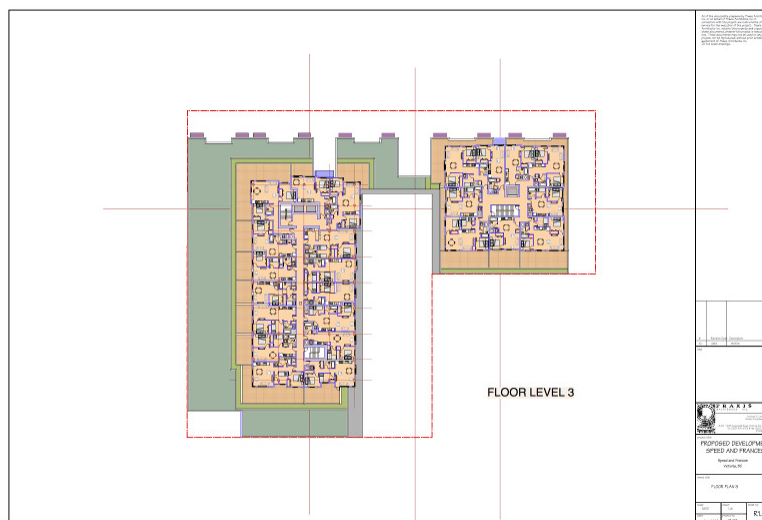




## Main Floor Plan Original Proposal - 2011



## Floor Plan Original Proposal - 2011



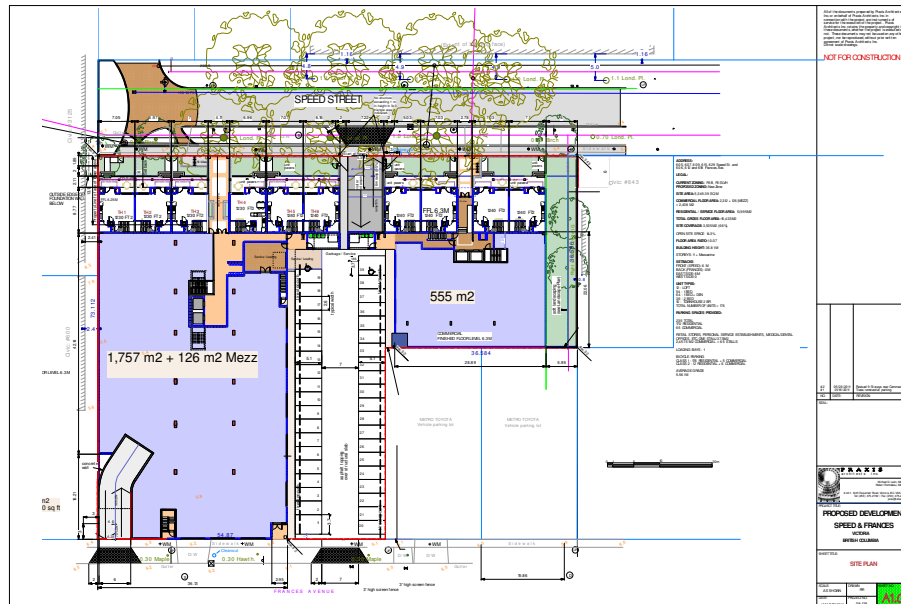
### Speed Avenue View – Original Proposal 2011



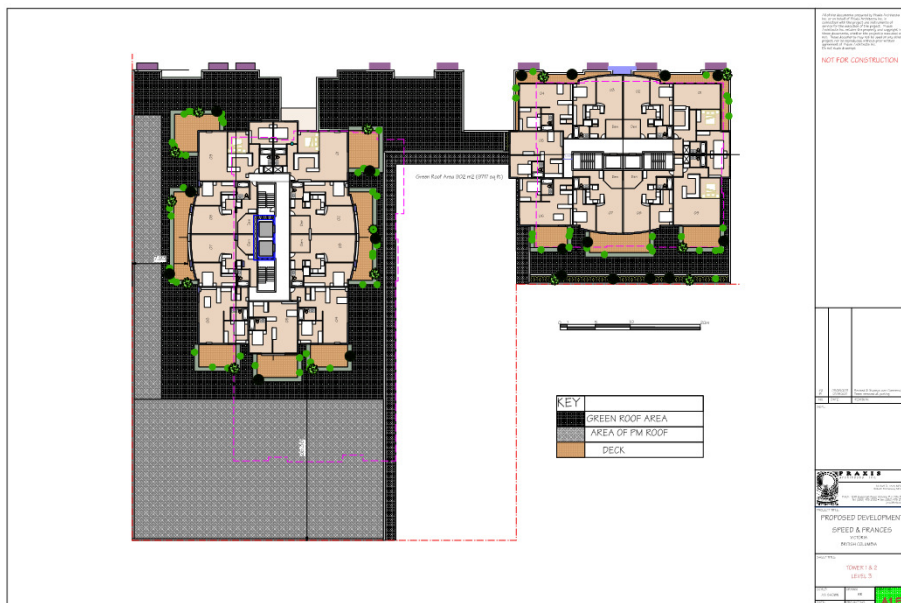
### Elevations Second Proposal – 2012



## Main Floor Plan Second Proposal – 2012



## Upper floor plans Second Proposal - 2012







## Aerial View Second Proposal - 2012



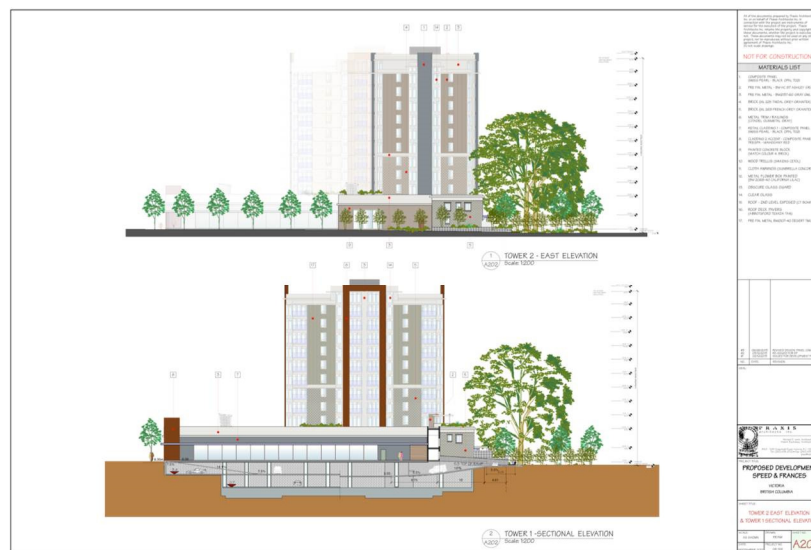
## Aerial View Second Proposal - 2012



## Aerial View Second Proposal - 2012

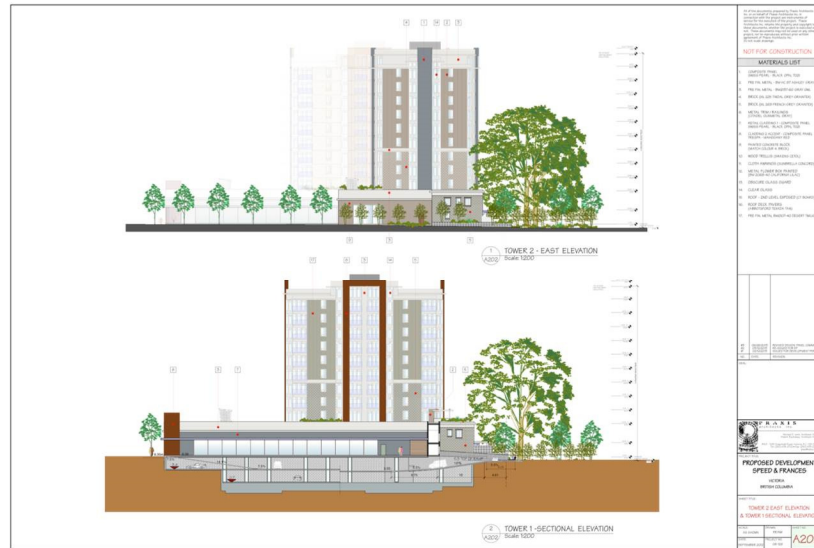


## Elevations Revised Second Proposal – 2013





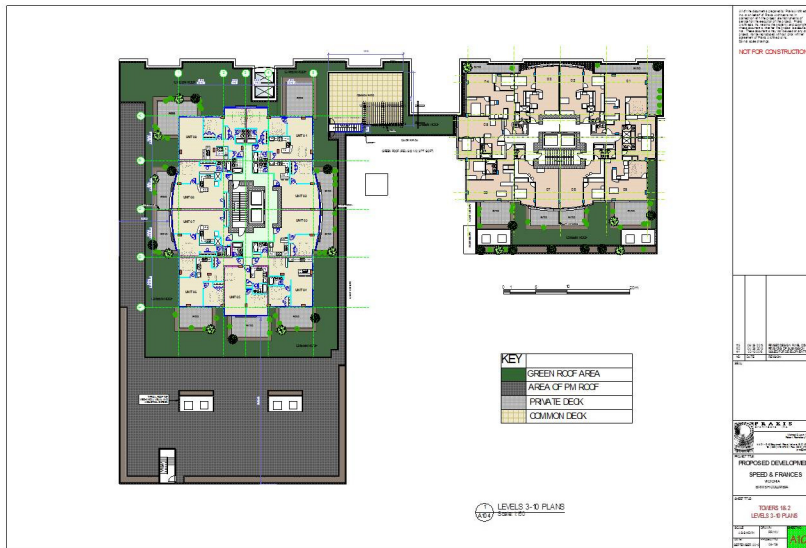
## Elevations Revised Second Proposal – 2013



## Main Level Revised Second Proposal – 2013



## Upper Levels Revised Second Proposal – 2013



## Aerial View Revised Second Proposal – 2013



### Aerial View Revised Second Proposal – 2013



### Rendering of Revised Second Proposal – 2013



Speed & Frances - Cul-de-sac View







**Rezoning Application for 605-629 Speed Avenue and  
606-618 Frances Avenue**



Speed & Frances - Cul-de-sac View