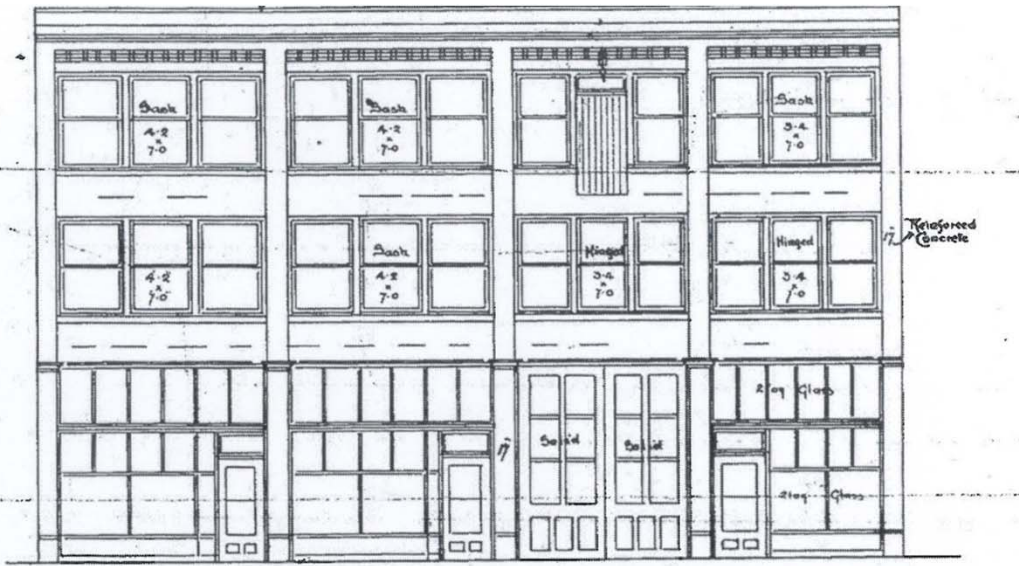




727-729 JOHNSON STREET



727-729 JOHNSON STREET



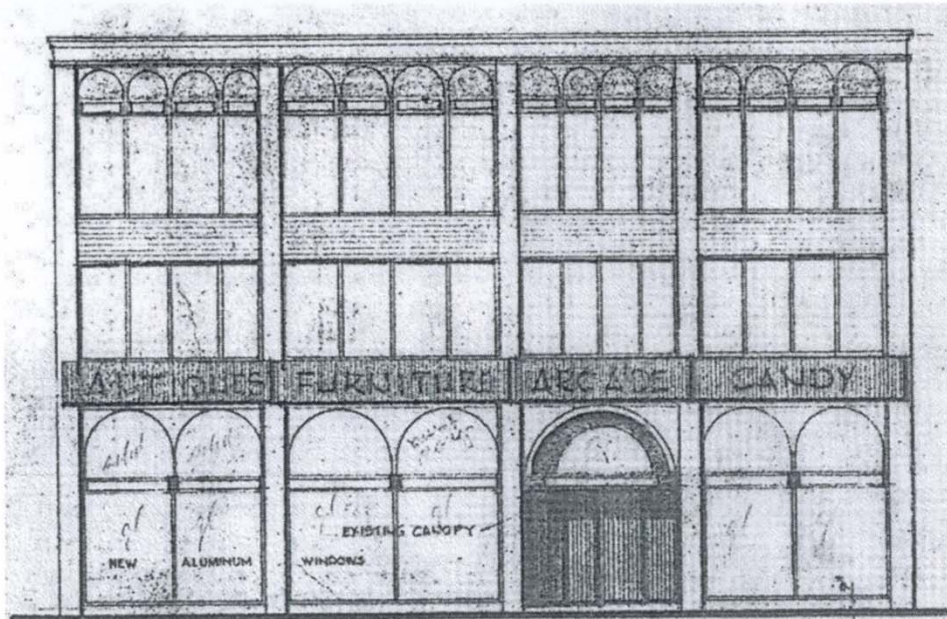
FRONT ELEVATION

C. C. Mosher & Co.
Architects
Victoria, B.C.

These are the drawings referred to
in Agreement dated Feb 10-1910.

1910

Above: Original Appearance, 1910 [City of Victoria Plans]. Below: 1967-68 alterations [City of Victoria Plans].



1967



2015

727-729 JOHNSON STREET