

RE RECORDING APPLICABLE  
 OF DEVELOPMENT PERMIT APPLICABLE  
 DATE 2014.07.25  
 SCALE 1:150

**endall elliot**  
 architects  
 in collaboration with  
**CEI Architecture**

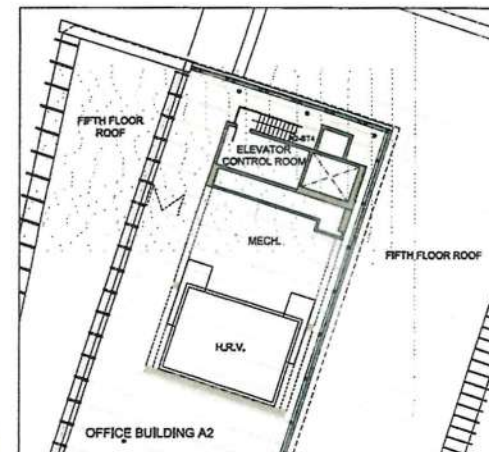
PROJECT:  
**CAPITAL PARK**  
 LEGISLATURE COMPREHENSIVE DISTRICT  
 DEVELOPMENT AREAS LP 2A & LP 2B  
 500 BLOCK OF SUPERIOR ST.  
 VICTORIA, B.C.

SHEET:  
**LP-2A - OFFICE  
 BUILDING A2  
 MECH. PENTHOUSE PLAN**

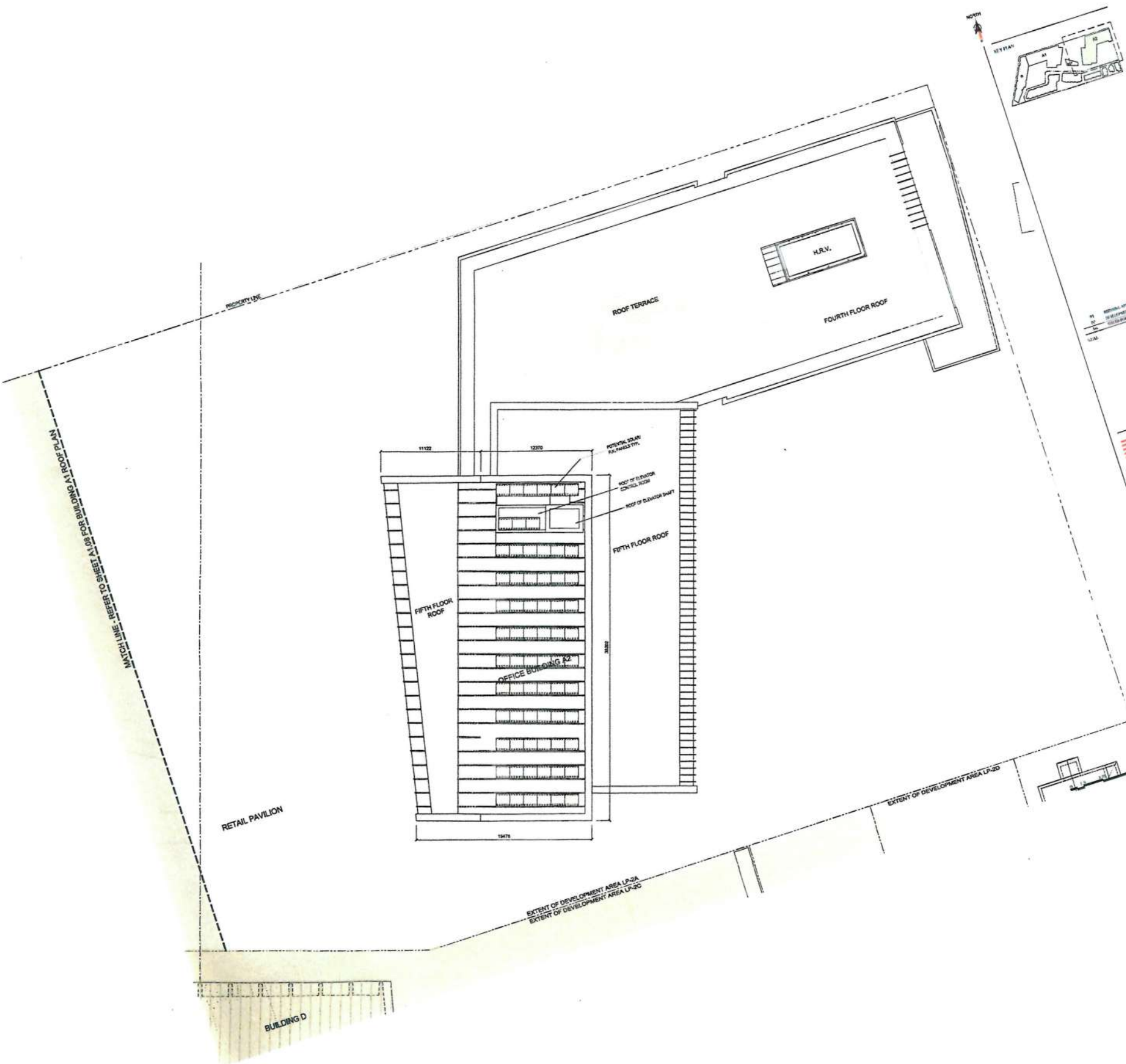
PROJECT No: 10440  
 DATE: 10/24/2013  
 SCALE: 1:150  
 DRAWN BY:  
 CHECKED BY:  
 REV. No:

SHEET No: **A2.07**

BUILDING A2 MECHANICAL PENTHOUSE PLAN ①  
 1:150



ELEVATOR CONTROL ROOM ②  
 1:150



15	RETAIL PAVILION	10/10/10
16	OFFICE BUILDING A2	10/10/10
17	OFFICE BUILDING A1	10/10/10
18	OFFICE BUILDING A3	10/10/10
19	OFFICE BUILDING A4	10/10/10
20	OFFICE BUILDING A5	10/10/10
21	OFFICE BUILDING A6	10/10/10
22	OFFICE BUILDING A7	10/10/10
23	OFFICE BUILDING A8	10/10/10
24	OFFICE BUILDING A9	10/10/10
25	OFFICE BUILDING A10	10/10/10

**endall elliot**  
associates  
architectural design  
in collaboration with  
**CEI** Architecture

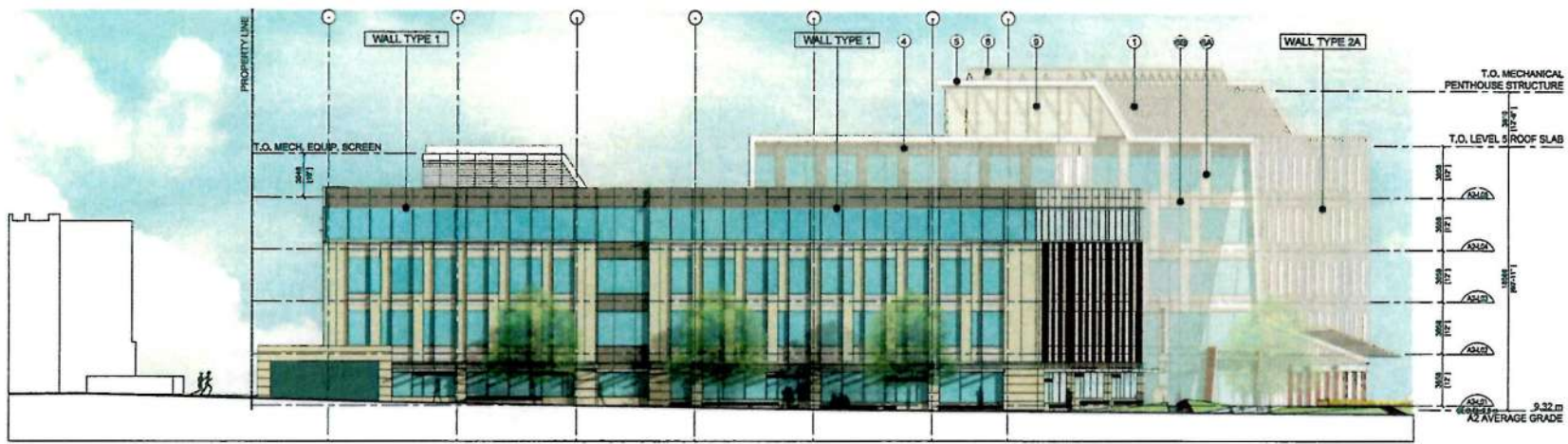
PROJECT:  
**CAPITAL PARK**  
LEGISLATURE COMPREHENSIVE DISTRICT  
DEVELOPMENT AREAS LP-2A & LP-2B  
500 BLOCK OF SUPERIOR ST.  
VICTORIA, B.C.

TITLE:  
**LP-2A - OFFICE  
BUILDING A2  
ROOF PLAN**

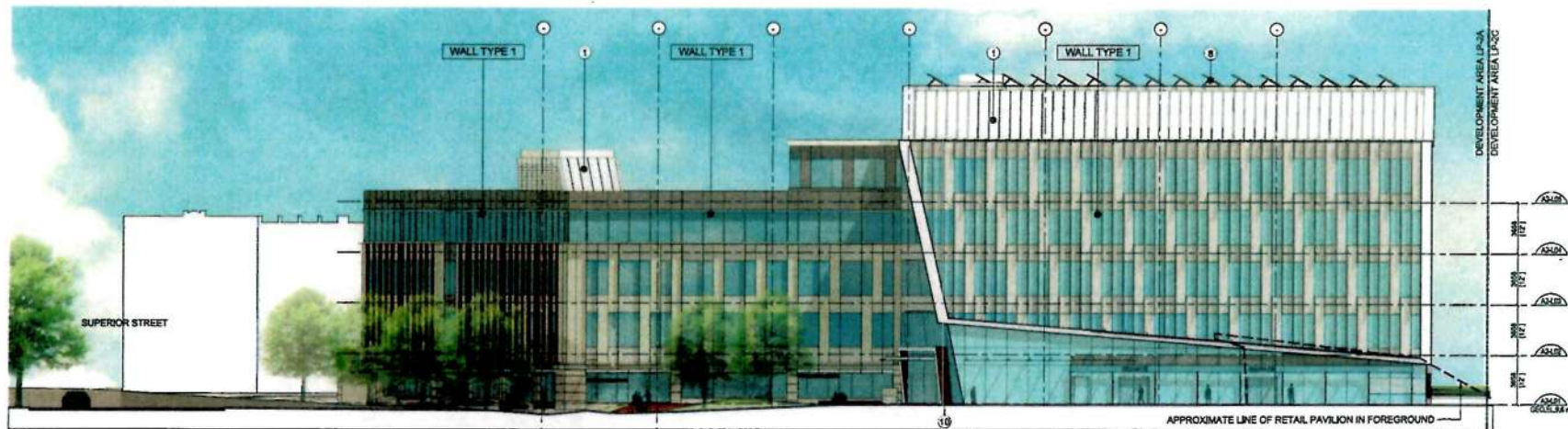
PROJECT No: 10040  
DATE: 10 March 2011  
SCALE: 1/8" = 1'-0"  
DRAWN BY: [Name]  
CHECKED BY: [Name]  
DATE: 10 March 2011

**A2.08**





OFFICE BUILDING A2 - NORTH ELEVATION  
1:150 ①



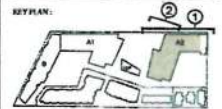
OFFICE BUILDING A2 - WEST ELEVATION  
1:150 ②

**MATERIALS KEY** (FOR WALL TYPE DESCRIPTIONS REFER TO DRAWINGS A2.14 - A2.18)

- ① PREFINISHED STANDING SEAM METAL ROOFING
- ② CAST IN PLACE CONCRETE
- ③ TERRACOTTA PANELS
- ④ INSULATED SPANDREL GLASS (SOLID COLOUR)

- ⑤ PREFINISHED ALUMINUM COMPOSITE PANEL
- ⑥A INSULATED SPANDREL GLASS WITH 3" HORIZONTAL FRIT @ 4" O.C.
- ⑥B INSULATED SPANDREL GLASS WITH 1" HORIZONTAL FRIT @ 2" O.C.
- ⑦ 1" LINED HORIZONTAL FRIT @ 2" O.C.

- ⑧ POTENTIAL SOLAR / P.V. PANELS (UNDER EVALUATION)
- ⑨ PREFINISHED ALUMINUM LOUVRES
- ⑩ PREFINISHED WOOD COMPOSITE PANEL



BT RECORD APPLICATION 2014.07.23  
 SA DEVELOPMENT PERMIT APPLICATION 2015.09.27  
 SA TRAILER 2015 04/25  
 SCALE:

**endall elliot**  
 associates  
 architecture and design  
 in collaboration with  
**CEI Architecture**

Copyright Reserved  
 This architectural drawing and its contents are the property of Endall Elliot Associates, Inc. and CEI Architecture. No part of this drawing may be reproduced or transmitted in any form or by any means electronic, mechanical, photocopying, recording, or by any information storage and retrieval system, without the prior written permission of Endall Elliot Associates, Inc. and CEI Architecture.

**PROJECT :**  
**CAPITAL PARK**  
 LEGISLATURE COMPREHENSIVE DISTRICT  
 DEVELOPMENT AREAS LP 2A & LP 2B  
 500 BLOCK OF SUPERIOR ST.  
 VICTORIA, B.C.  
 WITH :  
 LP 2A - OFFICE  
 BUILDING A2 - NORTH  
 AND WEST ELEVATIONS

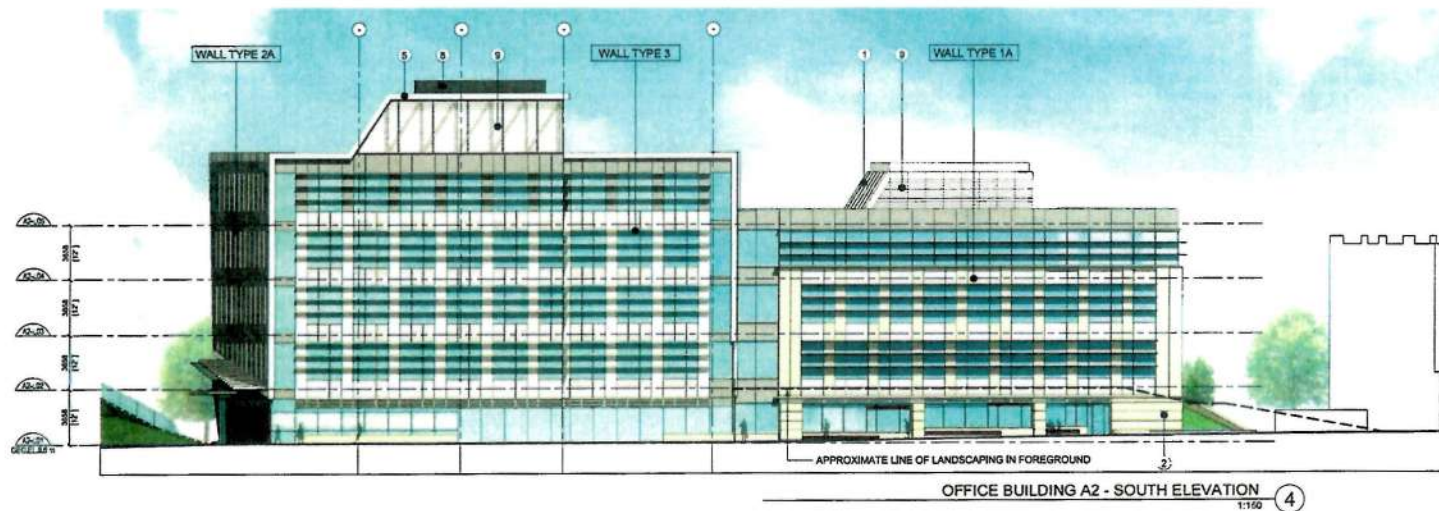
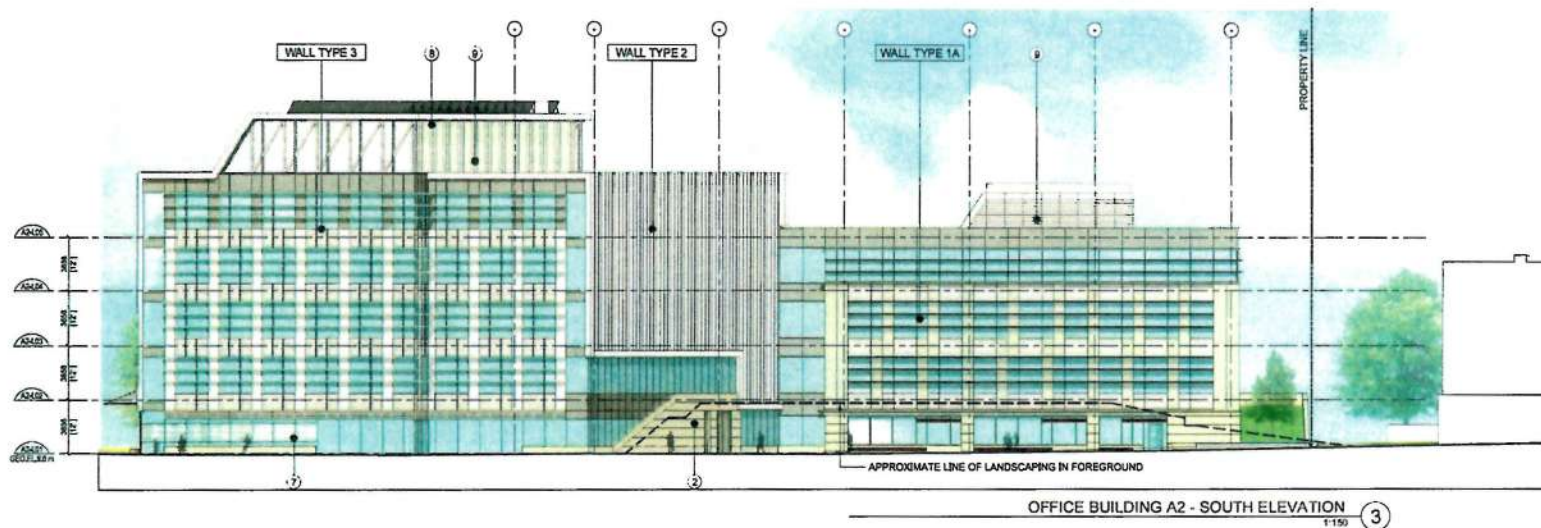
PROJECT No: 2014.09  
 DATE: 10 March 2015  
 SCALE: 1:150  
 DRAWN BY: [blank]  
 REV. No: [blank]

SHEET No:

**A2.09**





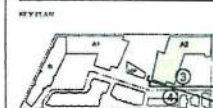


**MATERIALS KEY** (FOR WALL TYPE DESCRIPTIONS REFER TO DRAWINGS A2.14 - A2.18)

- 1 PREFINISHED STANDING SEAM METAL ROOFING
- 2 CAST IN PLACE CONCRETE
- 3 TERRACOTTA PANELS
- 4 INSULATED SPANDREL GLASS (SOLID COLOUR)

- 5 PREFINISHED ALUMINUM COMPOSITE PANEL
- 6A INSULATED SPANDREL GLASS WITH 3" HORIZONTAL FRIT @ 4" O.C.
- 6B INSULATED SPANDREL GLASS WITH 1" HORIZONTAL FRIT @ 2" O.C.
- 7 1" LINED HORIZONTAL FRIT @ 2" O.C.

- 8 POTENTIAL SOLAR / P.V. PANELS (UNDER EVALUATION)
- 9 PREFINISHED ALUMINUM LOUVRES
- 10 PREFINISHED WOOD COMPOSITE PANEL



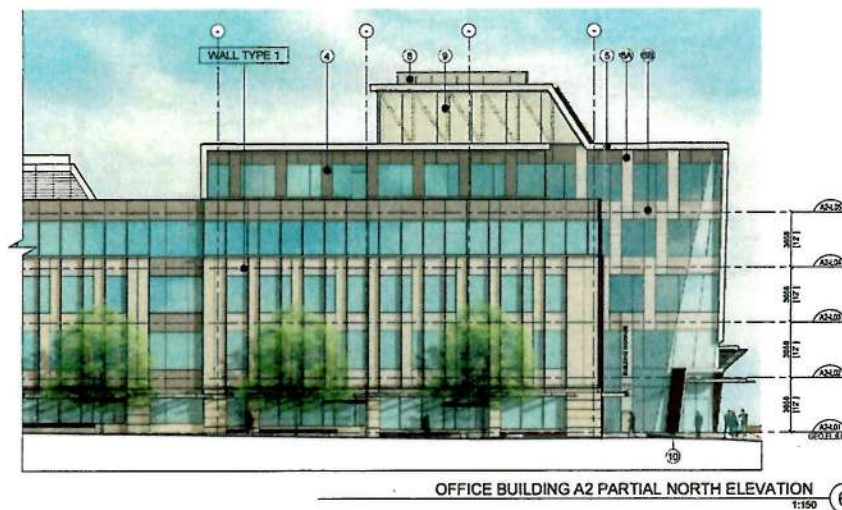
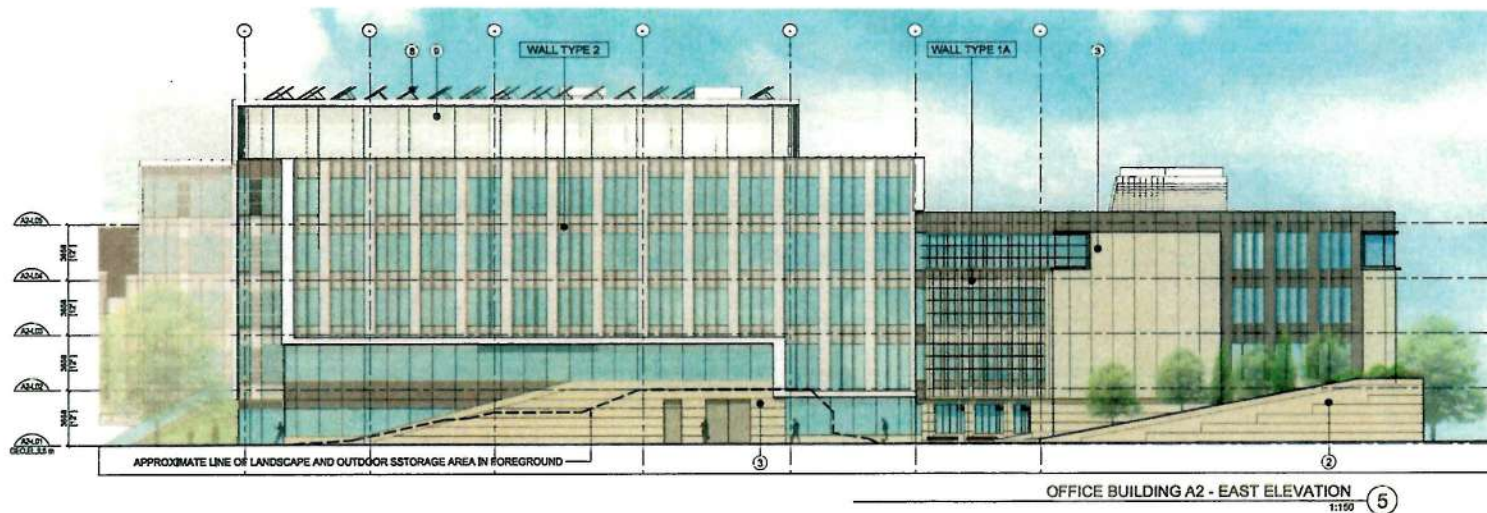
PROJECT: LEGISLATURE COMPREHENSIVE DISTRICT DEVELOPMENT AREAS LP-2A & LP-2B  
 500 BLOCK OF SUPERIOR ST. VICTORIA, B.C.  
 100%  
 LP-2A - OFFICE BUILDING A2 - SOUTH ELEVATIONS  
 PROJECT NO. 10-000  
 DATE: 10/10/05  
 SCALE: 1:150  
 DRAWN BY: C. HILL  
 CHECKED BY: M. HILL

**endall elliot**  
 associates  
 architecture + urban design  
 In collaboration with  
**CEI Architecture**

**PROJECT**  
**CAPITAL PARK**  
 LEGISLATURE COMPREHENSIVE DISTRICT DEVELOPMENT AREAS LP-2A & LP-2B  
 500 BLOCK OF SUPERIOR ST. VICTORIA, B.C.  
 100%  
 LP-2A - OFFICE BUILDING A2 - SOUTH ELEVATIONS

PROJECT NO. 10-000  
 DATE: 10/10/05  
 SCALE: 1:150  
 DRAWN BY: C. HILL  
 CHECKED BY: M. HILL

SHEET NO. **A2.10**



**MATERIALS KEY** (FOR WALL TYPE DESCRIPTIONS REFER TO DRAWINGS A2.14 - A2.18)

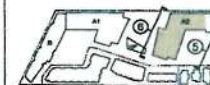
- ① PREFINISHED STANDING SEAM METAL ROOFING
- ② CAST IN PLACE CONCRETE
- ③ TERRACOTTA PANELS
- ④ INSULATED SPANDREL GLASS (SOLID COLOUR)

- ⑤ PREFINISHED ALUMINUM COMPOSITE PANEL
- ⑥ INSULATED SPANDREL GLASS WITH 3" HORIZONTAL FRT @ 4" O.C.
- ⑦ INSULATED SPANDREL GLASS WITH 1" HORIZONTAL FRT @ 2" O.C.
- ⑧ 1" LINED HORIZONTAL FRT @ 2" O.C.

- ⑨ POTENTIAL SOLAR / P.V. PANELS (UNDER EVALUATION)
- ⑩ PREFINISHED ALUMINUM LOUVRES
- ⑪ PREFINISHED WOOD COMPOSITE PANEL



**KEY PLAN:**



46	REVISION: APPLICATION	2014-07-25
47	REVISION: PERMIT APPLICATION	2014-08-11
48	REVISION: PERMIT APPLICATION	2014-08-11
49	REVISION: PERMIT APPLICATION	2014-08-11

DATE:

**endall elliot**  
associates

architecture urban design

In collaboration with

**CEI** Architecture

Copyright Reserved

This document and any other documents or drawings are the property of Endall Elliot Associates. No part of this document or any other documents or drawings may be reproduced or transmitted in any form or by any means electronic or mechanical, including photocopying, recording, or by any information storage or retrieval system, without the prior written permission of Endall Elliot Associates.

PROJECT:

**CAPITAL PARK**

LEGISLATURE COMPREHENSIVE DISTRICT

DEVELOPMENT AREAS LP 2A & LP 2B

500 BLOCK OF SUPERIOR ST.

VICTORIA, B.C.

DATE:

**LP-2A - BUILDING A2 -**

**EAST AND PARTIAL**

**NORTH ELEVATION**

**ELEVATION**

PROJECT No: 30440

DATE: 10 March 2015

SCALE: 1:150

DRAWN BY: -

CHECKED BY: -

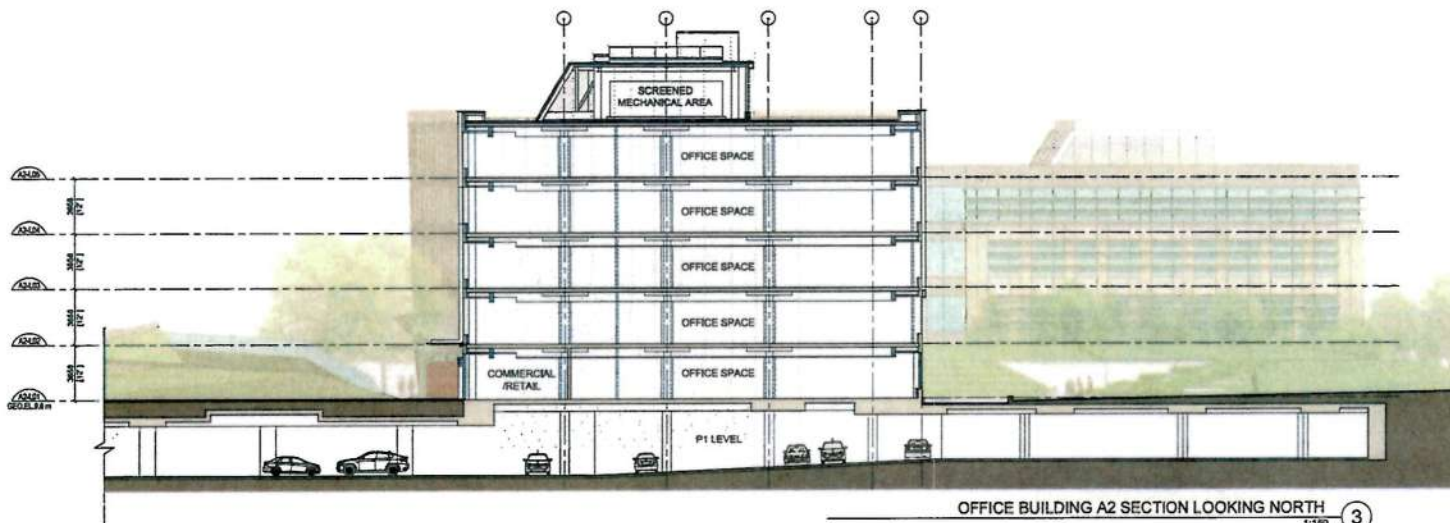
REV. No: -

SHEET No:

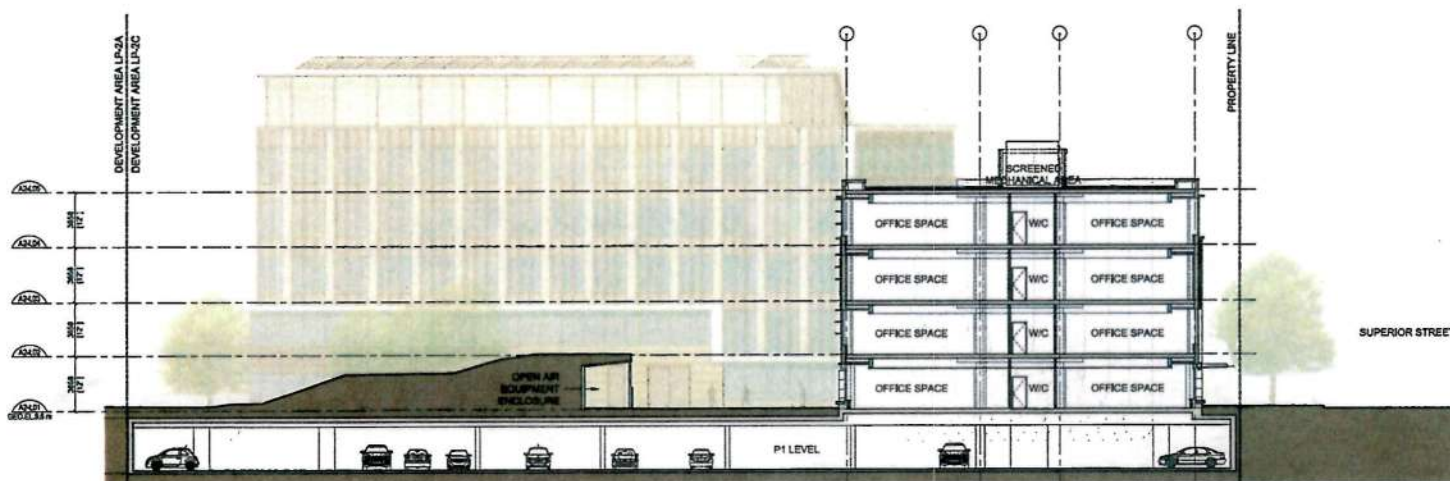
**A2.11**







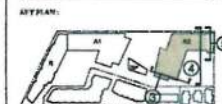
OFFICE BUILDING A2 SECTION LOOKING NORTH 1:100 3



OFFICE BUILDING A2 SECTION LOOKING EAST 1:100 4



OFFICE BUILDING A2 PARTIAL PARKADE RAMP SECTION 1:100 5



PROJECT: CAPITAL PARK  
 DEVELOPMENT: LEGISLATURE COMPREHENSIVE DISTRICT  
 DEVELOPMENT AREAS LP-2A & LP-2B  
 500 BLOCK OF SUPERIOR ST.  
 VICTORIA, B.C.

endall elliot  
 associates

In collaboration with  
 CEI Architecture

Copyright Reserved  
 No part of this drawing may be reproduced or transmitted in any form or by any means electronic or mechanical, including photocopying, recording, or by any information storage and retrieval system, without permission in writing from the author.

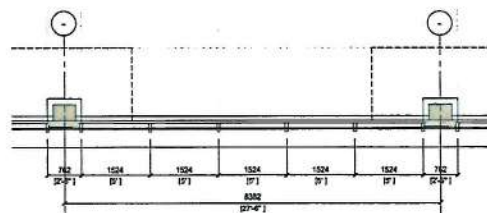
PROJECT: CAPITAL PARK  
 LEGISLATURE COMPREHENSIVE DISTRICT  
 DEVELOPMENT AREAS LP-2A & LP-2B  
 500 BLOCK OF SUPERIOR ST.  
 VICTORIA, B.C.

TITLE: LP-2A - OFFICE BUILDING  
 A2 SECTIONS - LOOKING  
 NORTH AND EAST AND  
 PARTIAL PARKADE RAMP

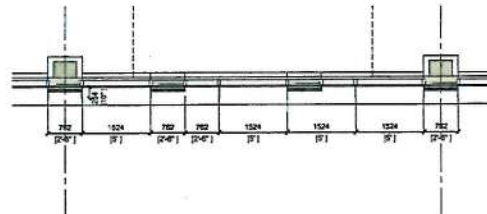
PROJECT No: 20140721  
 DATE: 10 March 2015  
 SCALE: 1:100  
 DRAWN BY: [Name]  
 CHECKED BY: [Name]  
 REV. No: [Number]

A2.13

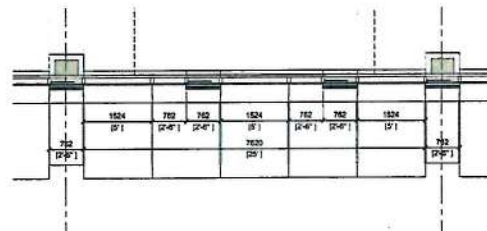




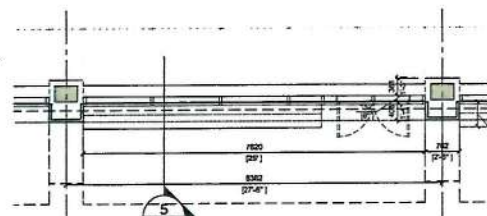
LEVEL 4 FLOOR PLAN 1:50



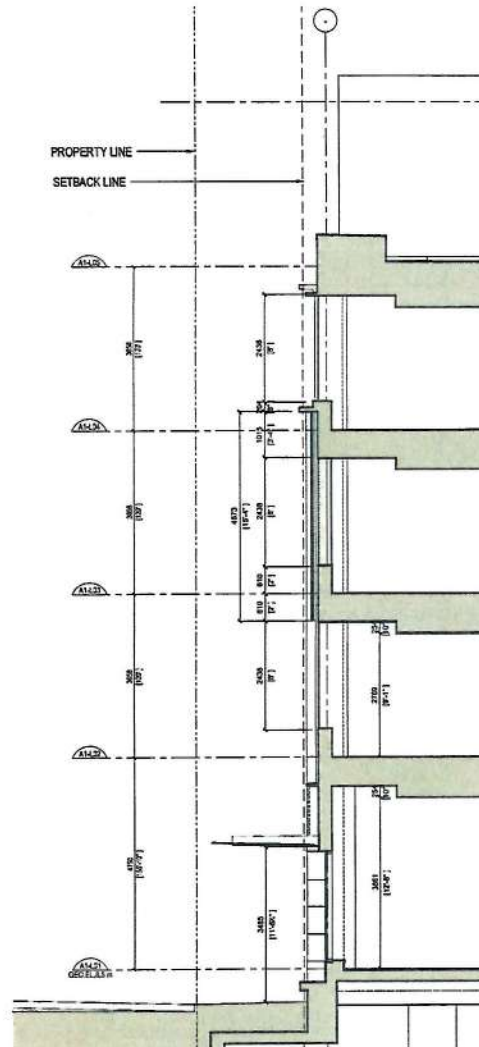
LEVEL 3 FLOOR PLAN 1:50



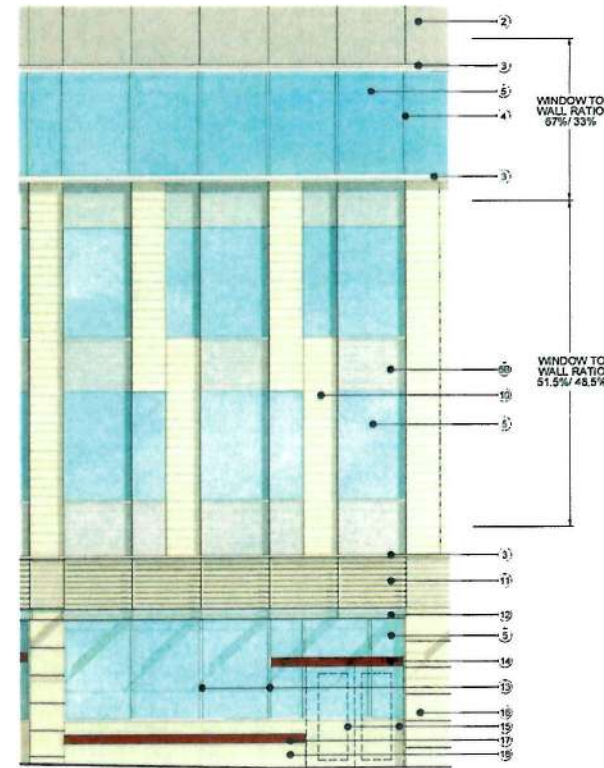
LEVEL 2 FLOOR PLAN 1:50



LEVEL 1 FLOOR PLAN 1:50



BUILDING A1 NORTH WALL SECTION 1:50



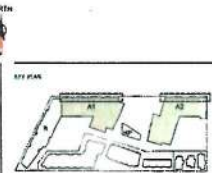
WALL TYPE 1 - NORTH ELEVATION 1:50

#### MATERIALS KEY

- 1 PREFINISHED STANDING SEAM METAL ROOFING
- 2 INSULATED SPANDREL GLASS (SOLID COLOUR)
- 3 PREFINISHED ALUMINUM COMPOSITE PANEL
- 4 2" MULLION CAPS
- 5 CLEAR / LIGHT TINT VISION GLAZING
- 6 INSULATED SPANDREL GLASS WITH 3" HORIZONTAL FRIT @ 4" O.C., COLOUR TO MATCH TERRA COTTA PANELS (LIGHT BUFF/GREY)
- 6B INSULATED SPANDREL GLASS WITH 1" HORIZONTAL FRIT @ 2" O.C., COLOUR TO MATCH TERRA COTTA PANELS (LIGHT BUFF/GREY)

- 7 PREFINISHED ALUMINUM MULLION EXTENSION
- 8 PREFINISHED, CUSTOM PROFILE MULLION EXTENSION (ACCENT COLOUR/RUST RED)
- 9 STRUCTURAL SILICON GLAZING JOINT
- 10 TERRA COTTA PANELS (LIGHT BUFF/GREY)
- 11 50MM X 50MM TERRA COTTA BAGUETTE SECTIONS (LIGHT BUFF/GREY)
- 12 STEEL AND GLASS CANOPY
- 13 PREFINISHED ALUMINUM STOREFRONT FRAMING

- 14 PREFINISHED METAL PANEL (ACCENT COLOUR/RUST RED)
- 15 POTENTIAL FUTURE DOOR OPENING
- 16 FLAMED AND/OR HONED GRANITE CLADDING
- 17 TIMBER BENCH/SILL
- 18 CAST IN PLACE CONCRETE
- 19 POTENTIAL PREFABRICATED ALUMINUM SHADING DEVICE (UNDER EVALUATION)
- 20 PREFINISHED ALUMINUM LOUVRES
- 21 12" DEEP CORTEN STEEL POST



10 REQUIRED APP. & NOT. 10-10-17 P.1  
11 REQUIRED APP. & NOT. 10-10-17 P.2  
12 REQUIRED APP. & NOT. 10-10-17 P.3  
13 REQUIRED APP. & NOT. 10-10-17 P.4

**endall elliot**  
architects  
in collaboration with  
**CEI Architecture**

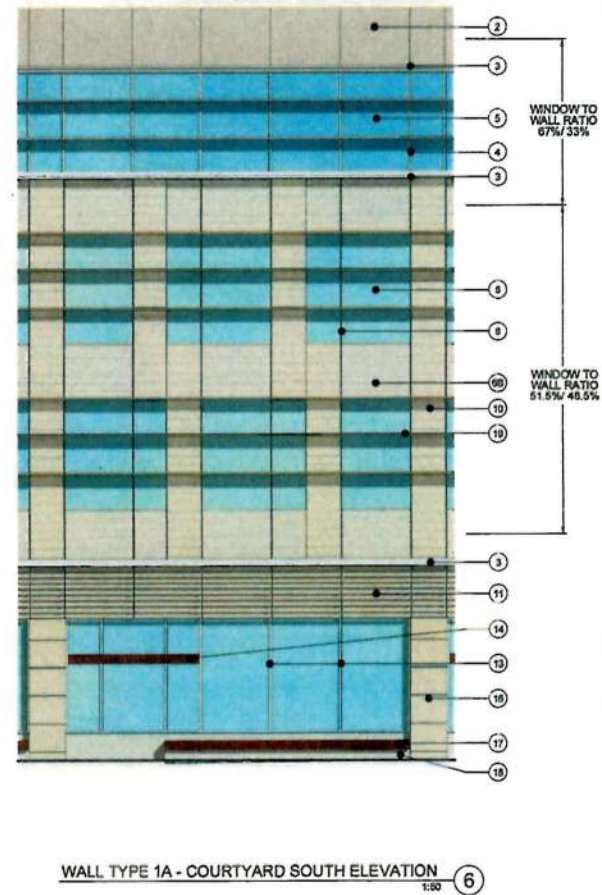
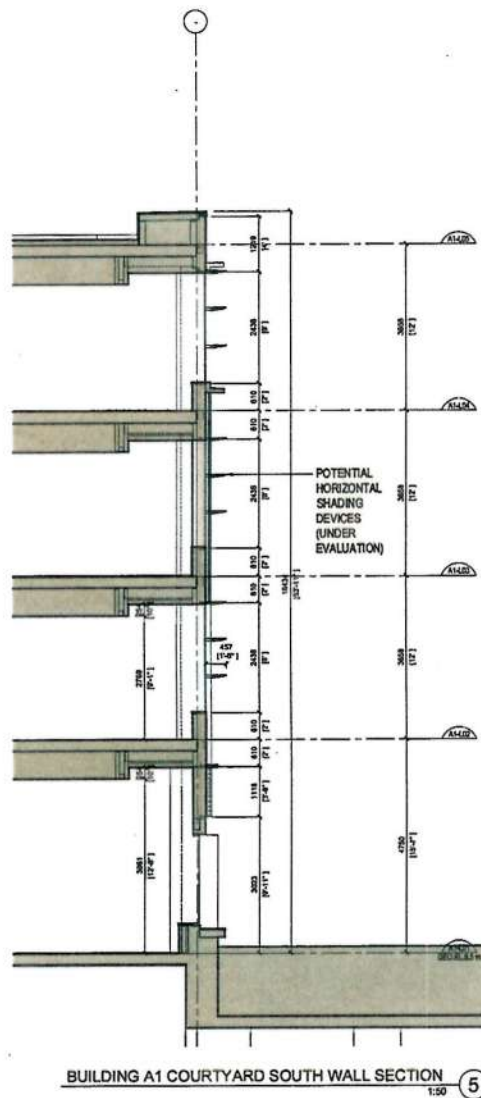
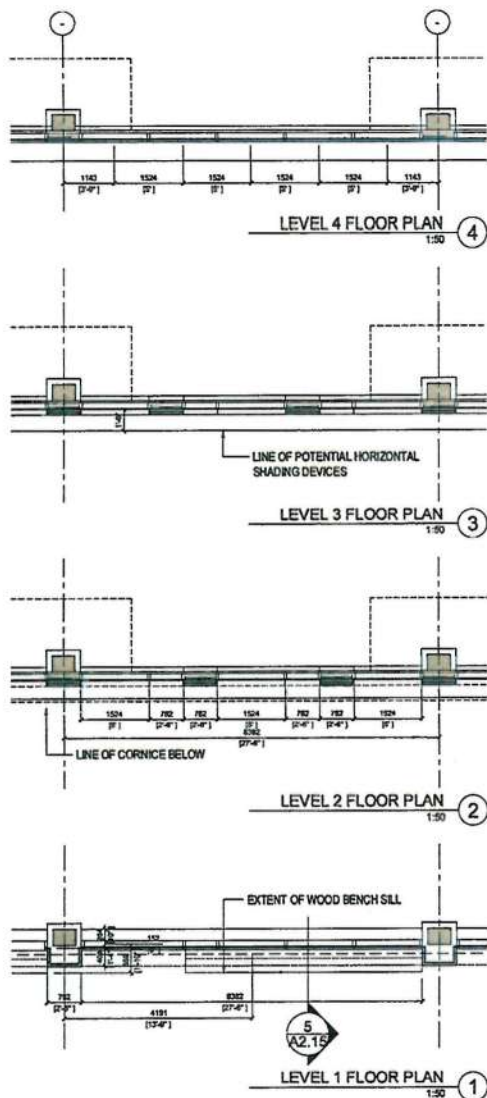
**CAPITAL PARK**  
LEGISLATURE COMPREHENSIVE DISTRICT  
DEVELOPMENT AREAS LP 2A & LP 2B  
500 BLOCK OF SUPERIOR ST.  
VICTORIA, B.C.  
**BUILDING A1 & A2**  
**NORTH ELEVATION**  
**WALL TYPE 1 DETAILS**

PROJECT No. 2014-01  
DATE 9 March 2015  
SCALE 1:50  
DRAWN BY  
CHECKED BY  
REV. No.

55922 No.

**A2.14**



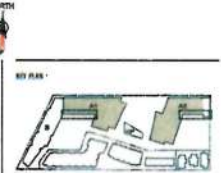


#### MATERIALS KEY

- ① PREFINISHED STANDING SEAM METAL ROOFING
- ② INSULATED SPANDREL GLASS (SOLID COLOUR)
- ③ PREFINISHED ALUMINUM COMPOSITE PANEL
- ④ 2" MULLION CAPS
- ⑤ CLEAR/LIGHT TINT VISION GLAZING
- ⑥ INSULATED SPANDREL GLASS WITH 3" HORIZONTAL FRIT @ 4" O.C. COLOUR TO MATCH TERRA COTTA PANELS (LIGHT BUFF/GREY)
- ⑦ INSULATED SPANDREL GLASS WITH 1" HORIZONTAL FRIT @ 2" O.C. COLOUR TO MATCH TERRA COTTA PANELS (LIGHT BUFF/GREY)

- ⑧ PREFINISHED ALUMINUM MULLION EXTENSION
- ⑨ PREFINISHED, CUSTOM PROFILE MULLION EXTENSION (ACCENT COLOUR/RUST RED)
- ⑩ STRUCTURAL SILICON GLAZING JOINT
- ⑪ TERRA COTTA PANELS (LIGHT BUFF/GREY)
- ⑫ 50MM X 50MM TERRA COTTA BASQUETTE SECTIONS (LIGHT BUFF/GREY)
- ⑬ STEEL AND GLASS CANOPY
- ⑭ PREFINISHED ALUMINUM STOREFRONT FRAMING

- ⑮ PREFINISHED METAL PANEL (ACCENT COLOUR/RUST RED)
- ⑯ POTENTIAL FUTURE DOOR OPENING
- ⑰ FLAMED AND/OR HONED GRANITE CLADDING
- ⑱ TIMBER BENCH/SILL
- ⑲ CAST IN PLACE CONCRETE
- ⑳ POTENTIAL PREFABRICATED ALUMINUM SHADING DEVICE (UNDER EVALUATION)
- ㉑ PREFINISHED ALUMINUM LOUVRES
- ㉒ 12" DEEP CORTEN STEEL POST



REVISIONS

NO.	REVISION	DATE
01	REVISION APPLICATION	2014/07/21
02	DEVELOPMENT PERMIT APPLICATION	2014/08/11
03	REVISED PLAN	2015

**endall elliot**  
associates  
architects + urban design

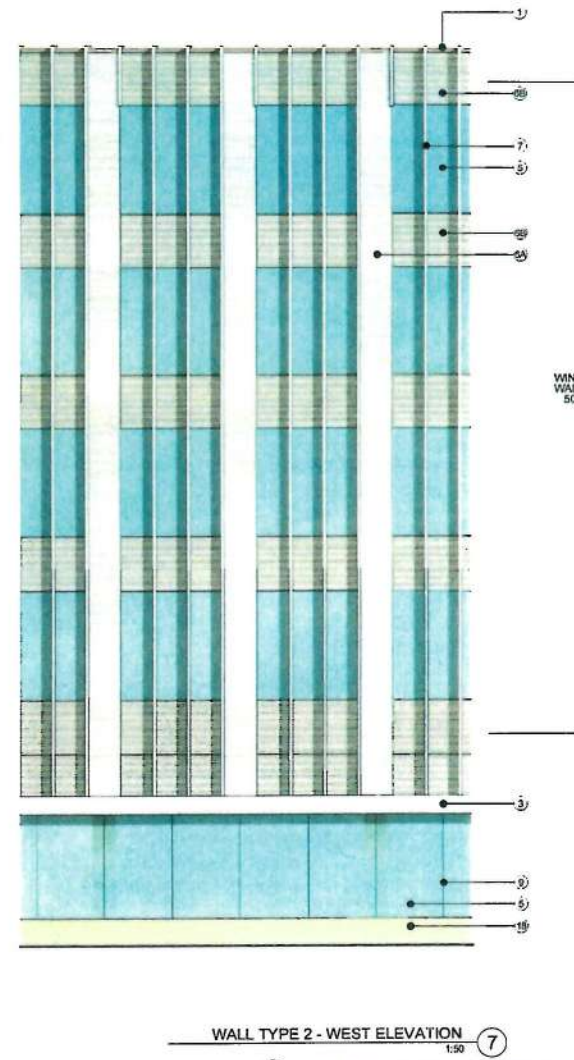
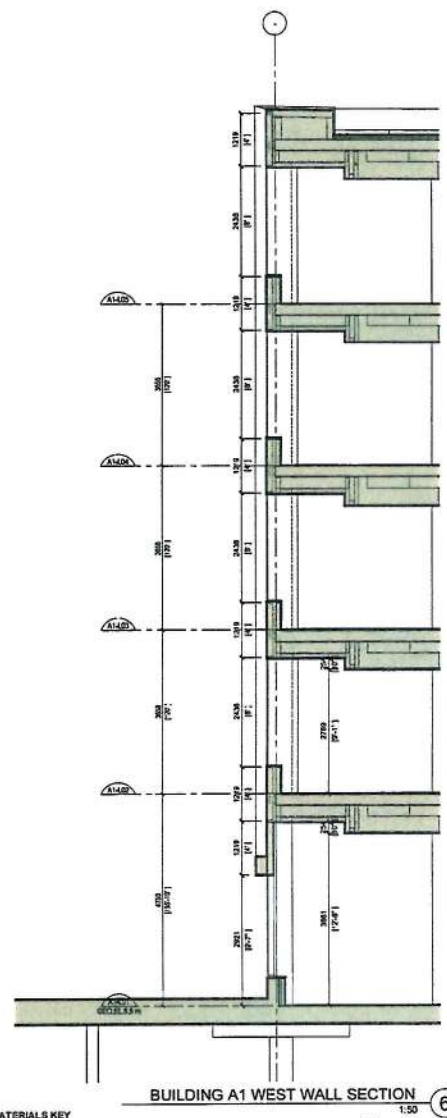
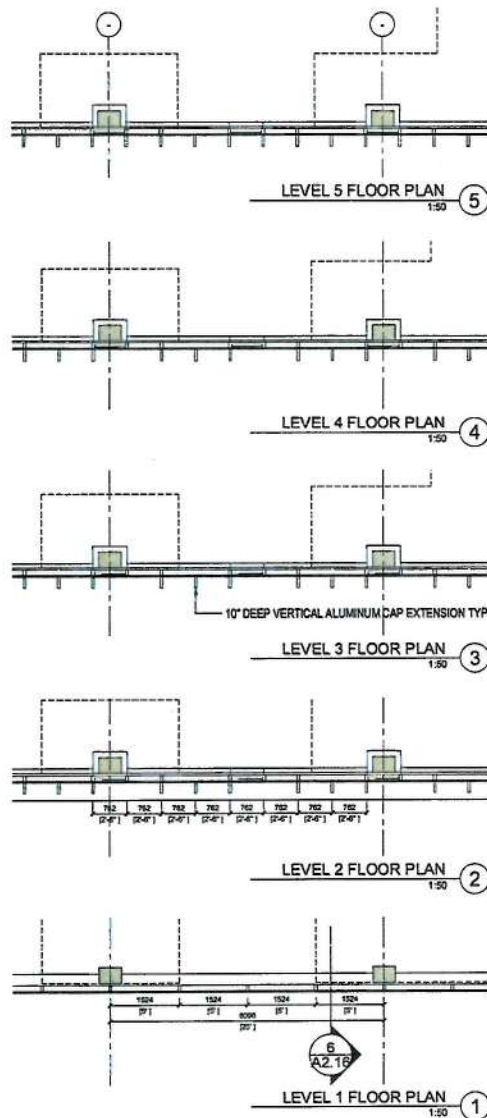
In collaboration with  
**CEI Architecture**

PROJECT 1  
**CAPITAL PARK**  
LEGISLATIVE COMPREHENSIVE DISTRICT  
DEVELOPMENT AREAS LP-2A & LP-2B  
500 BLOCK OF SUPERIOR ST.  
VICTORIA, B.C.

DATE:  
**BUILDING A1 & A2  
SOUTH ELEVATION  
WALL TYPE 1A DETAILS**

PROJECT No: 30460  
DATE: 9 March 2015  
SCALE: 1:50  
DRAWN BY: -  
CHECKED BY: -  
REV. No: -

SHEET No: **A2.15**

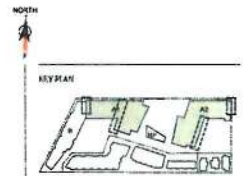


#### MATERIALS KEY

- ① PREFINISHED STANDING SEAM METAL ROOFING
- ② INSULATED SPANDREL GLASS (SOLID COLOUR)
- ③ PREFINISHED ALUMINUM COMPOSITE PANEL
- ④ 2\"/>
- ⑤ CLEAR / LIGHT TINT VISION GLAZING
- ⑥A INSULATED SPANDREL GLASS WITH 3\"/>
- ⑥B INSULATED SPANDREL GLASS WITH 1\"/>

- ⑦ PREFINISHED ALUMINUM MULLION EXTENSION
- ⑧ PREFINISHED, CUSTOM PROFILE MULLION EXTENSION (ACCENT COLOUR/RUST RED)
- ⑨ STRUCTURAL SILICON GLAZING JOINT
- ⑩ TERRA COTTA PANELS (LIGHT BUFF/GREY)
- ⑪ 30MM X 50MM TERRA COTTA BAGUETTE SECTIONS (LIGHT BUFF/GREY)
- ⑫ STEEL AND GLASS CANOPY
- ⑬ PREFINISHED ALUMINUM STOREFRONT FRAMING

- ⑭ PREFINISHED METAL PANEL (ACCENT COLOUR/RUST RED)
- ⑮ POTENTIAL FUTURE DOOR OPENING
- ⑯ FLAMED AND/OR HONED GRANITE CLADDING
- ⑰ TIMBER BENCH/SILL
- ⑱ CAST IN PLACE CONCRETE
- ⑲ POTENTIAL PREFABRICATED ALUMINUM SHADING DEVICE (UNDER EVALUATION)
- ⑳ PREFINISHED ALUMINUM CLAVIES
- ㉑ 12\"/>



WINDOW TO  
WALL RATIO  
50%/50%

RE	REVISIONS, APPROVALS	DATE
01	DEVELOPMENT PERMIT APPLICATION	2024.03.22
02	REVISIONS	2024.03.22

**endall elliot**  
ARCHITECTS  
in collaboration with  
**CEI Architecture**

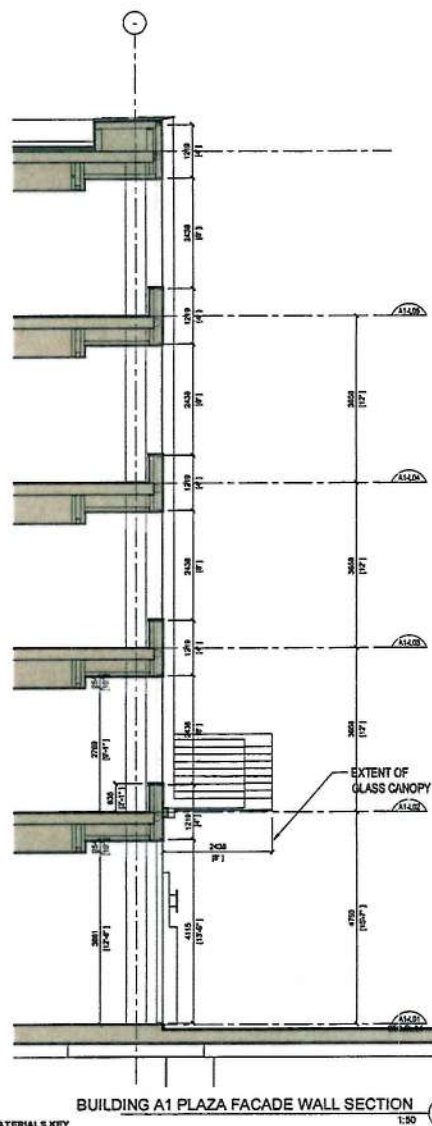
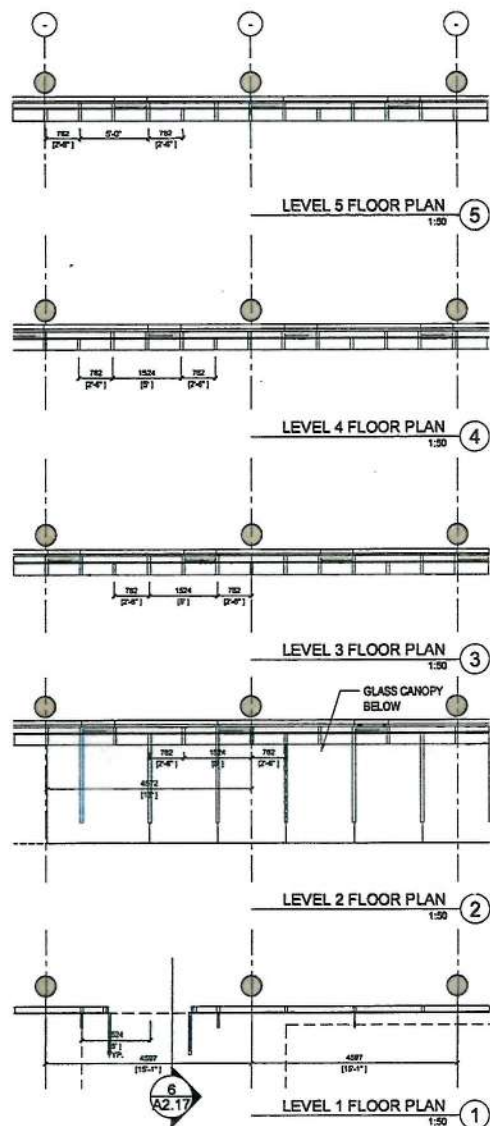
**CAPITAL PARK**  
LEGISLATURE COMPREHENSIVE DISTRICT  
DEVELOPMENT AREAS LP-2A & LP-2B  
500 BLOCK OF SUPERIOR ST.  
VICTORIA, B.C.

PROJECT NO. 2024-001  
DATE: 01 MARCH 2024  
SCALE: 1:50  
DRAWN BY: P. BENTLEY  
REV. 001

SHEET NO.

**A2.16**



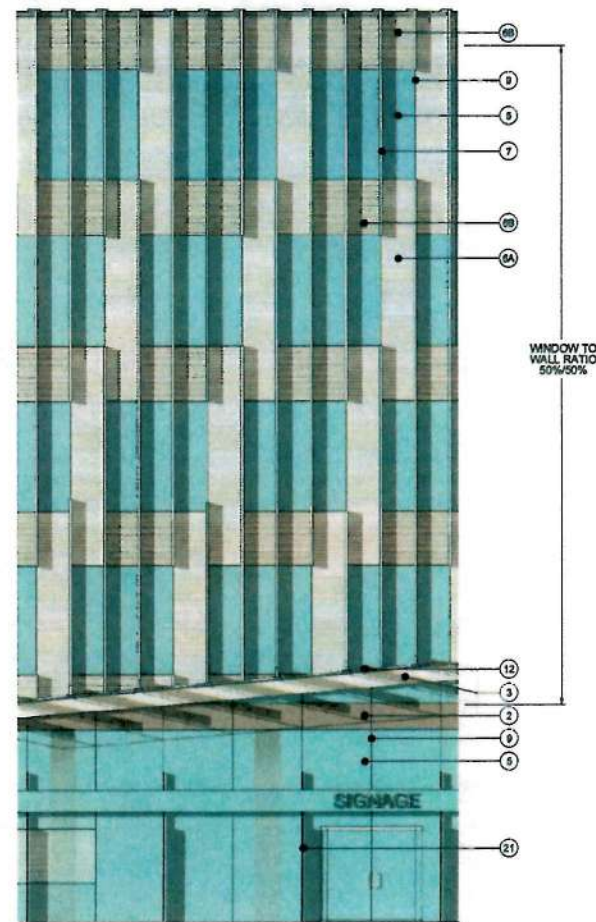


#### MATERIALS KEY

- ① PREFINISHED STANDING SEAM METAL ROOFING
- ② INSULATED SPANDREL GLASS (SOLID COLOUR)
- ③ PREFINISHED ALUMINUM COMPOSITE PANEL
- ④ 2" MULLION CAPS
- ⑤ CLEAR / LIGHT TINT VISION GLAZING
- ⑥ INSULATED SPANDREL GLASS WITH 3" HORIZONTAL FRIT @ 4" O.C. COLOUR TO MATCH TERRA COTTA PANELS (LIGHT BUFF/OREY)
- ⑦ INSULATED SPANDREL GLASS WITH 1" HORIZONTAL FRIT @ 2" O.C. COLOUR TO MATCH TERRA COTTA PANELS (LIGHT BUFF/OREY)

- ⑧ PREFINISHED ALUMINUM MULLION EXTENSION
- ⑨ PREFINISHED, CUSTOM PROFILE MULLION EXTENSION (ACCENT COLOUR/RUST RED)
- ⑩ STRUCTURAL SILICON GLAZING JOINT
- ⑪ TERRA COTTA PANELS (LIGHT BUFF/OREY)
- ⑫ 50MM X 50MM TERRA COTTA BAQUETTE SECTIONS (LIGHT BUFF/OREY)
- ⑬ STEEL AND GLASS CANOPY
- ⑭ PREFINISHED ALUMINUM STOREFRONT FRAMING

- ⑮ PREFINISHED METAL PANEL (ACCENT COLOUR/RUST RED)
- ⑯ POTENTIAL FUTURE DOOR OPENING
- ⑰ FLAMED AND/OR HONED GRANITE CLADDING
- ⑱ TIMBER BENCH/SEAT
- ⑲ CAST IN PLACE CONCRETE
- ⑳ POTENTIAL PREFABRICATED ALUMINUM SHADING DEVICE (UNDER EVALUATION)
- ㉑ PREFINISHED ALUMINUM LOUVRES
- ㉒ 12" DEEP CORTEN STEEL POST



WALL TYPE 2A - PLAZA EAST ELEVATION 1:50 ⑦



REVISIONS

NO.	REVISION	DATE
01	ISSUED FOR APPLICATION	2014.07.25
02	FOR PRELIMINARY APPLICATION	2014.08.12
03	FOR PRELIMINARY APPLICATION	2014.08.12

**endall elliot**  
architects  
in collaboration with  
**CEI Architecture**

PROJECT: CAPITAL PARK  
LEGENDARY COMPREHENSIVE DISTRICT  
DEVELOPMENT AREAS LP-2A & LP-2B  
500 BLOCK OF SUPERIOR ST.  
VICTORIA, B.C.

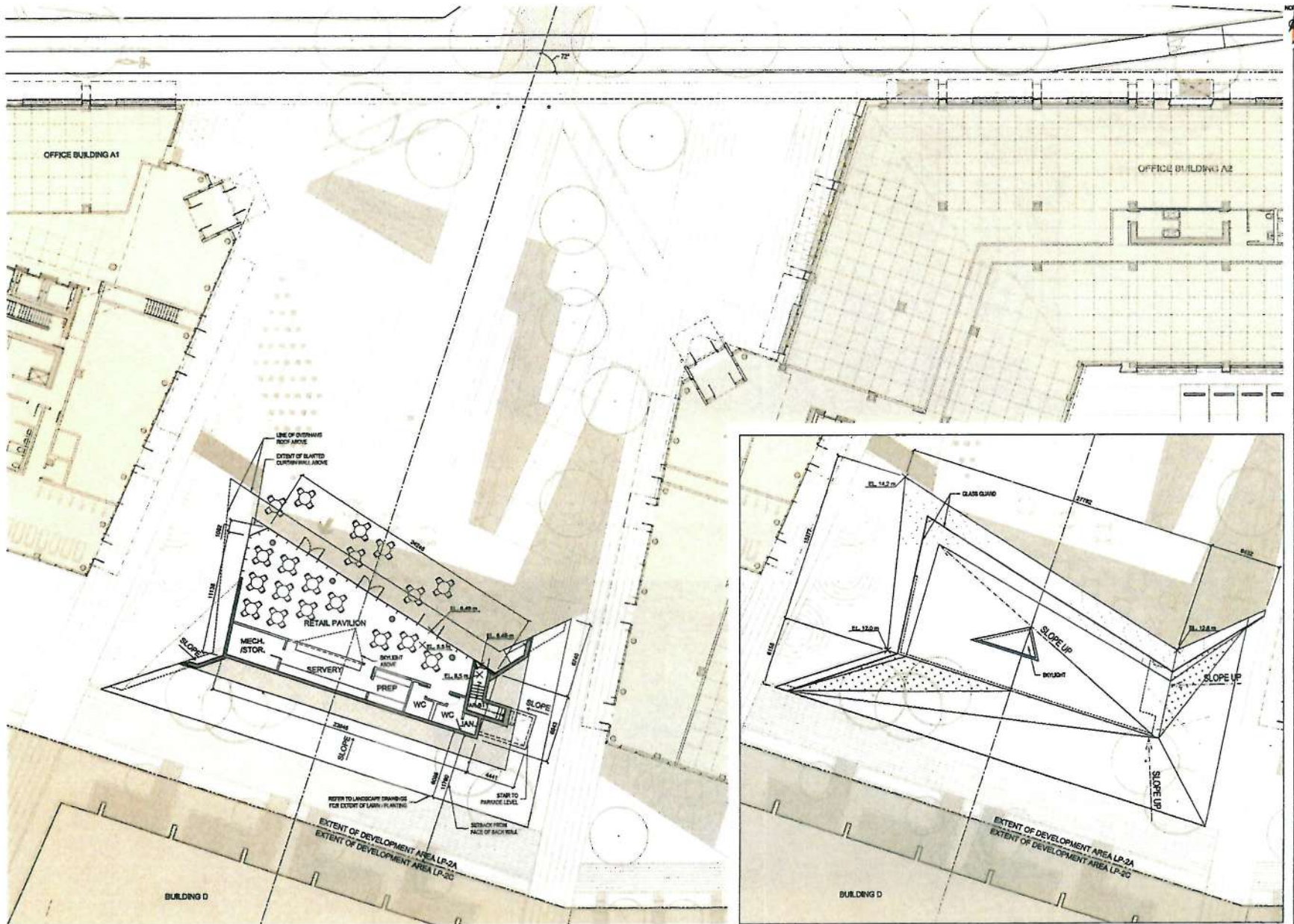
DATE: BUILDING A1 & A2  
WALL TYPE 2A DETAILS

PROJECT No: 70440  
DATE: 9 March 2015  
SCALE: 1:50  
DRAWN BY: -  
CHECKED BY: -  
REV. No: -

SHEET No: A2.17

A2.18





RETAIL PAVILION GROUND FLOOR PLAN

1:150

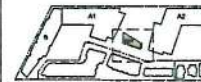
①

RETAIL PAVILION ROOF PLAN

1:150

②

KEY PLAN:



61. 10/04/2015  
62. 20/04/2015  
63. 20/04/2015  
64. 20/04/2015

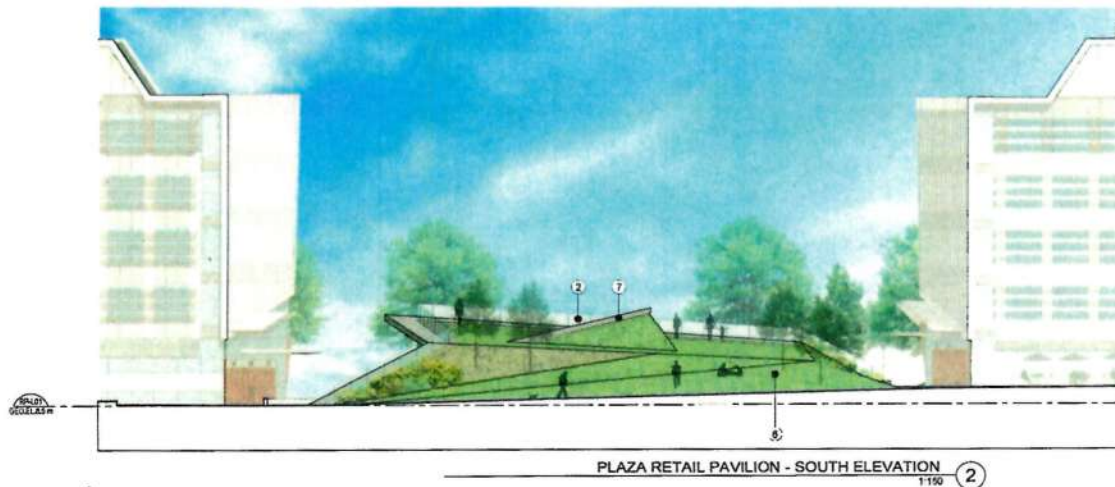
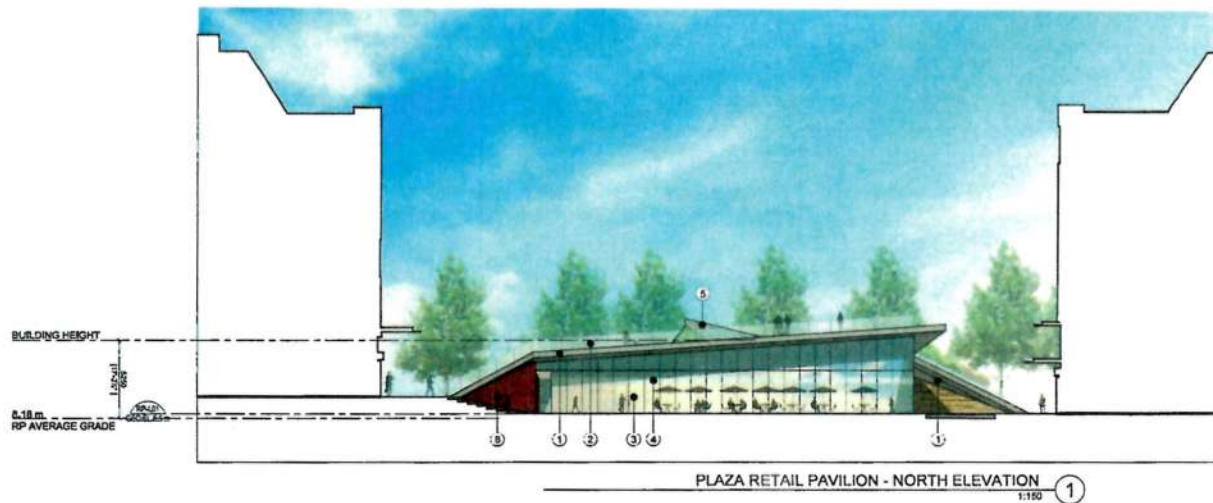
**endall elliot**  
ARCHITECTS  
in collaboration with  
**CEI Architecture**

PROJECT:  
**CAPITAL PARK**  
LITERATURE COMPREHENSIVE DISTRICT  
DEVELOPMENT AREAS LP-2A & LP-2B  
500 BLOCK OF SUPERIOR ST.  
VICTORIA, B.C.  
SHEET:  
**LP-2A - RETAIL PAVILION  
LEVEL 1 & ROOF PLAN**

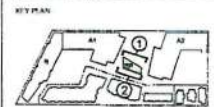
PROJECT No: 70449  
DATE: 09 March 2015  
SCALE: 1/150  
DRAWN BY: [blank]  
CHECKED BY: [blank]  
REV. No: [blank]

SHEET No:

**A3.01**



- MATERIALS KEY**
- 1 CAST IN PLACE CONCRETE
  - 2 GLASS GUARD
  - 3 STRUCTURAL GLAZING
  - 4 1" LINED HORIZONTAL FRIT @ 2" O.C.
  - 5 SKYLIGHT
  - 6 GREEN ROOF
  - 7 PREFINISHED METAL FASCIA/TRIM
  - 8 CORTEN STEEL PANEL



01	REVISION: SITE & UTILITY	01/14/17
02	REVISION: POWER APPLICATION	01/15/17
03	REVISION: FLOOR PLAN	01/15/17
04	REVISION: FLOOR PLAN	01/15/17

**endall elliot**  
associates  
architectural design

In collaboration with

**CEI** Architecture

Copyright Reserved

PROJECT:  
**CAPITAL PARK**

LEGISLATURE COMPREHENSIVE DISTRICT  
DEVELOPMENT AREAS LP-2A & LP-2B

500 BLOCK OF SUPERIOR ST.  
VICTORIA, B.C.

WEEK:  
LP-2A - RETAIL  
PAVILION ELEVATIONS

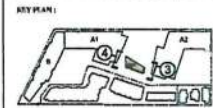
PROJECT: 1000  
DATE: 01/14/17  
SCALE: 1/8" = 1'-0"  
DRAWN BY: E. ELLIOT  
CHECKED BY: E. ELLIOT

SHEET NO. **A3.02**





- MATERIALS KEY**
- 1 CAST IN PLACE CONCRETE
  - 2 GLASS GUARD
  - 3 STRUCTURAL GLAZING
  - 4 1" LINED HORIZONTAL FRIT @ 2' O.C.
  - 5 SKYLIGHT
  - 6 GREEN ROOF
  - 7 PREFINISHED METAL FASCIA/TRIM
  - 8 CORTEN STEEL PANEL



01 BUILDING APPLICATION 07/14/07 03  
02 DEVELOPMENT PERMIT APPLICATION 07/15/07 02  
03 BUILDING PERMIT 08/07/07

**endall elliot**  
associates  
architects urban design  
in collaboration with  
**CEI Architecture**

Copyright Reserved  
No part of this publication may be reproduced, stored in a retrieval system, or transmitted, in any form or by any means, electronic, mechanical, photocopying, recording, or by any information storage and retrieval system, without prior written permission from the publisher.

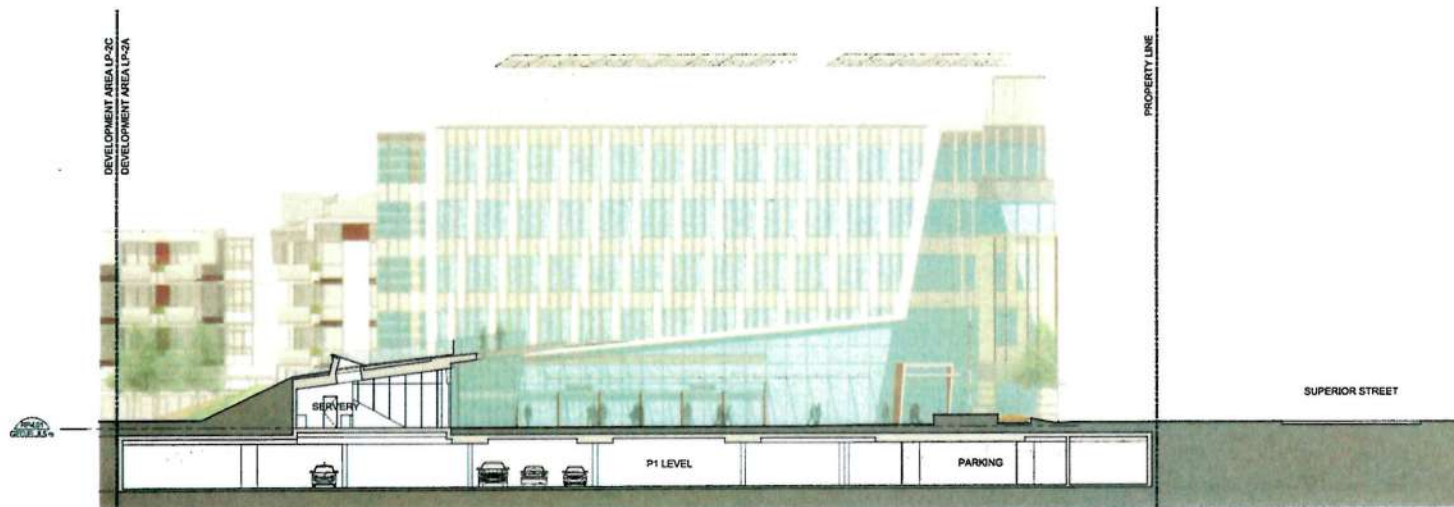
**PROJECT :**  
**CAPITAL PARK**  
LEGISLATURE COMPREHENSIVE DISTRICT  
DEVELOPMENT AREAS LP 2A & LP 2B  
500 BLOCK OF SUPERIOR ST.  
VICTORIA, B.C.  
**TEAM :**  
**LP-2A - RETAIL  
PAVILION ELEVATIONS**

**PROJECT No. :** 00440  
**DRAWN :** 08 March 2015  
**SCALE :** 1/150  
**DESIGN BY :**  
**CHECKED BY :**  
**REV. No. :**

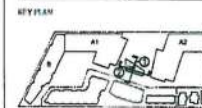
**SHEET No. :** **A3.03**



RETAIL PAVILION SECTION - LOOKING NORTH 1:150 ①



RETAIL PAVILION SECTION - LOOKING WEST 1:150 ②



PROJECT: CAPITAL PARK  
 DATE: 10/10/15  
 DRAWN BY: [Name]  
 CHECKED BY: [Name]

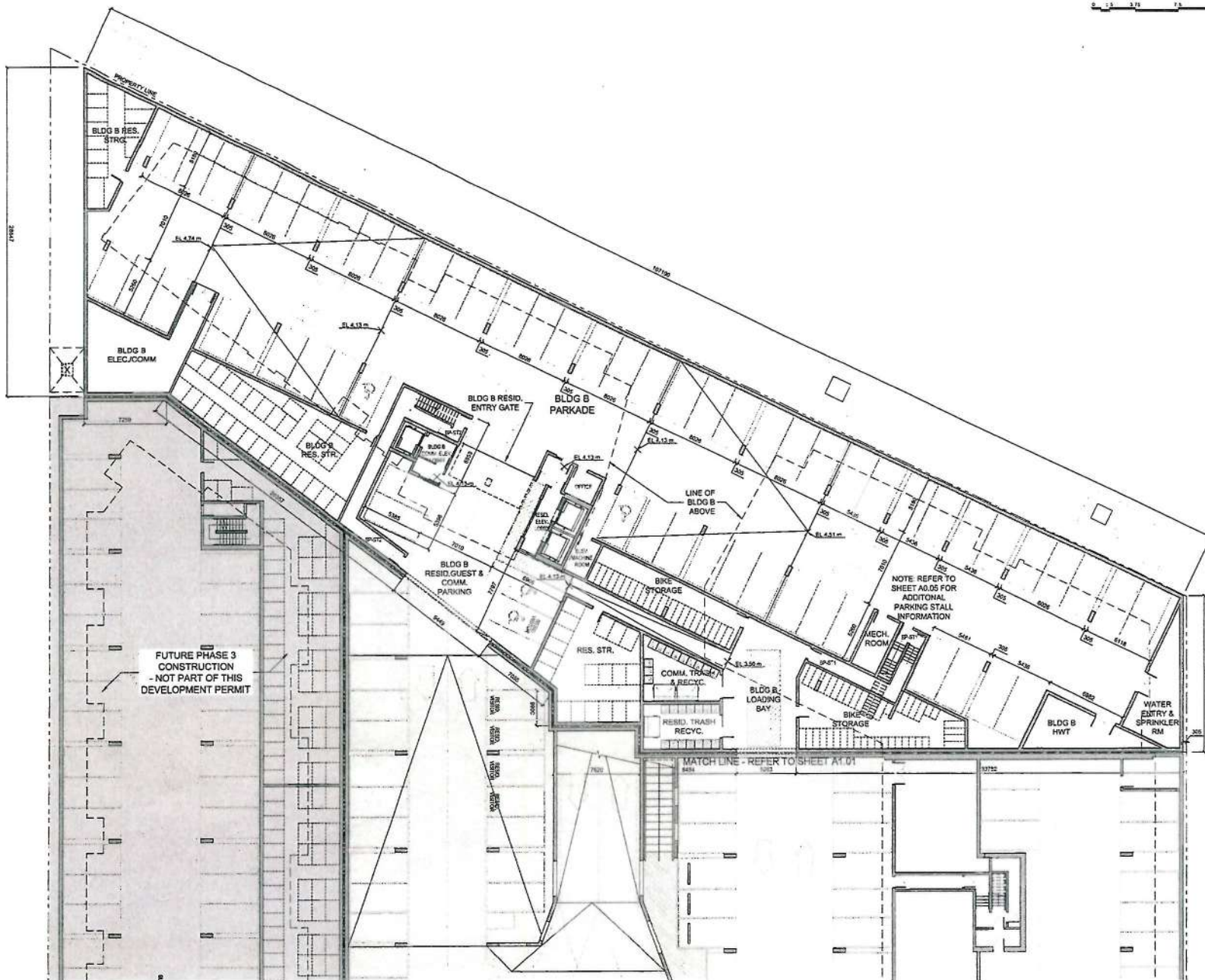
**endall elliot**  
 architects  
 in collaboration with  
**CEI** Architecture  
 500 BLOCK OF SUPERIOR ST.  
 VICTORIA, B.C.

**CAPITAL PARK**  
 LEGISLATURE COMPREHENSIVE DISTRICT  
 DEVELOPMENT AREAS LP-2A & LP-2B  
 500 BLOCK OF SUPERIOR ST.  
 VICTORIA, B.C.

PROJECT No: 10000  
 DATE: 10/10/15  
 DRAWN BY: [Name]  
 CHECKED BY: [Name]

**A3.04**





KEY PLAN



01	STREET ADDRESS	2018.07.21
02	DEVELOPMENT PERMIT APPLICATION	2018.08.10
03	D.P. DEVELOPMENT REVIEW RESPONSE	2018.09.14
04	DATE	

SCALE

**endall elliot**  
associates  
architecture urban design

In collaboration with

**CEI** Architecture

Copyright Reserved  
This document and all its contents are the property of the firm and are not to be reproduced or transmitted in any form or by any means electronic, mechanical, photocopying, recording, or by any information storage and retrieval system without the prior written permission of the firm.

PROJECT  
**CAPITAL PARK**

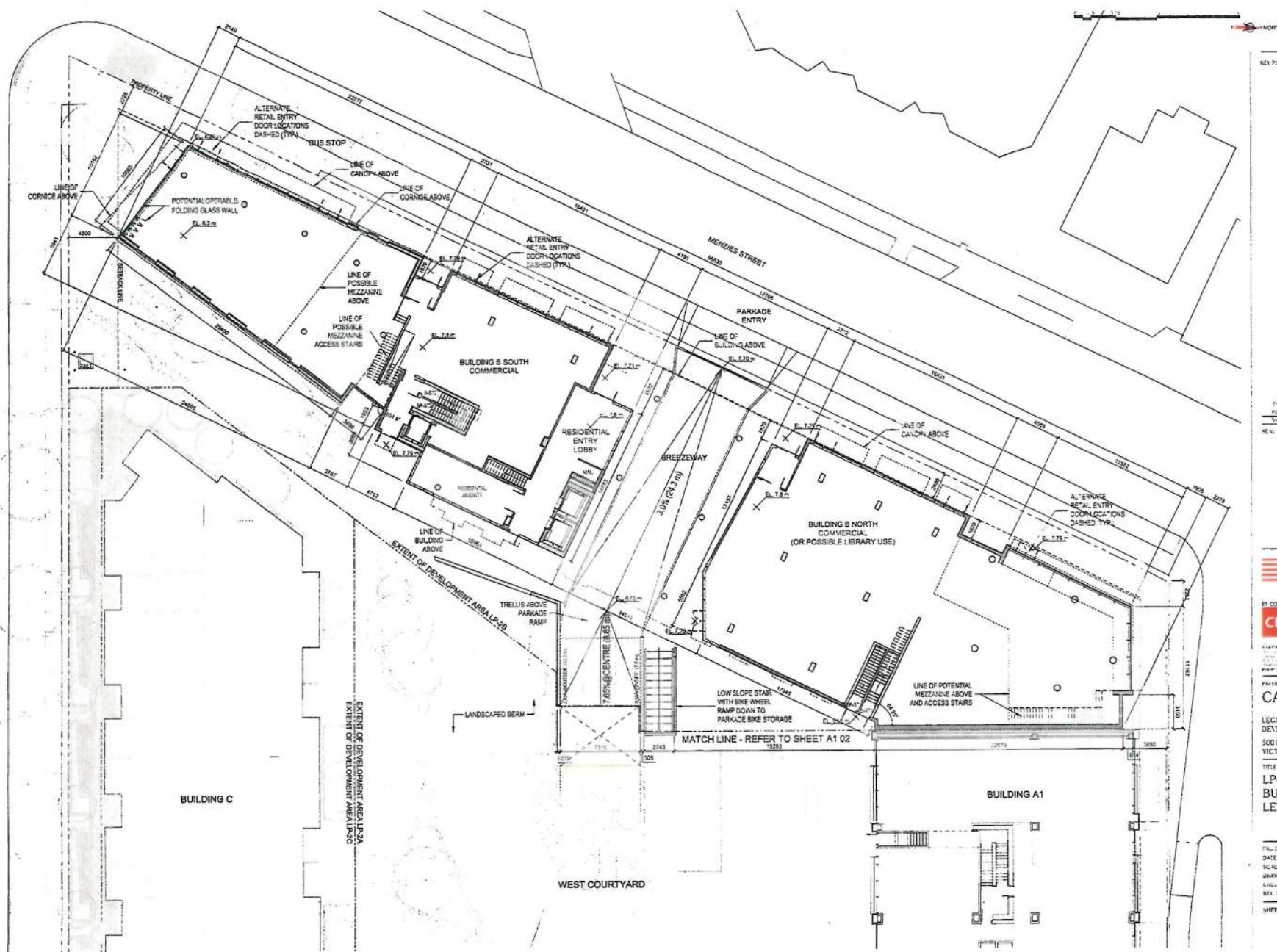
LEGISLATURE COMPREHENSIVE DISTRICT  
DEVELOPMENT AREAS LP-2A & LP-2B  
500 BLOCK OF SUPERIOR ST.  
VICTORIA, B.C.

TITLE  
**LP-2B - MIXED-USE  
BUILDING B  
P1 PARKING LEVEL PLAN**

PROJECT No. 2244-0  
DATE 6 May 2015  
SCALE 1:150  
DRAWN BY  
CHECKED BY  
REV. No.

SHEET 36

**A4.01**



**KEY PLAN**

BY: endall elliot associates  
 DATE: 10 March 2015  
 SCALE: 1:100  
 DRAWN BY: [Signature]  
 CHECKED BY: [Signature]  
 SHEET NO.

**endall elliot associates**  
 in collaboration with  
**CEI Architecture**

**CAPITAL PARK**

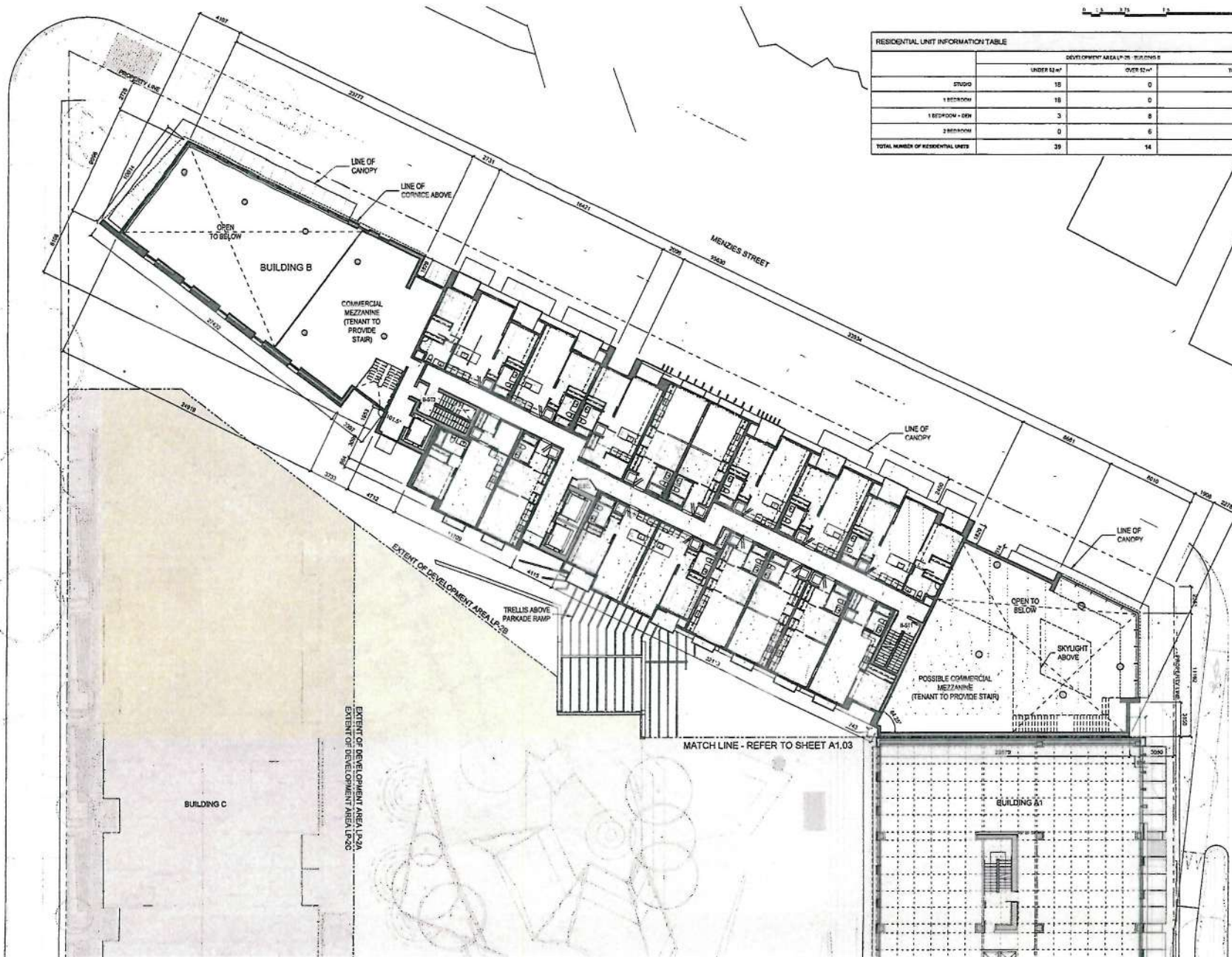
LEGISLATURE COMPREHENSIVE DISTRICT  
 DEVELOPMENT AREAS LP 2A & LP 2B  
 500 BLOCK OF SUPERIOR ST.  
 VICTORIA, B.C.

**LP-2B - MIXED-USE  
 BUILDING B  
 LEVEL 1 PLAN**

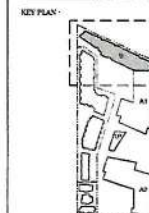
PROJECT NO. 1444  
 DATE: 10 March 2015  
 SCALE: 1:100  
 DRAWN BY: [Signature]  
 CHECKED BY: [Signature]  
 SHEET NO.

**A4.02**





	DEVELOPMENT AREA LP-2B BUILDINGS		
	UNDER 52 m <sup>2</sup>	OVER 52 m <sup>2</sup>	TOTAL
STUDIO	18	0	18
1 BEDROOM	18	0	18
1 BEDROOM + DEN	3	8	11
2 BEDROOM	0	6	6
TOTAL NUMBER OF RESIDENTIAL UNITS	39	14	53



BY	ENGINEERING APPLICATION	2014-07-21
BY	INTERIM DEVELOPMENT PERMIT APPLICATION	2015-03-07
BY	SELECTED FOR	2015
SEAL		

**endall elliot**  
associates  
architects urban design

In collaboration with  
**CEI** Architecture

Copyright Reserved  
The drawings and contents are prepared by CEI Associates Inc. and are the property of CEI Associates Inc. and are not to be reproduced or used in any manner without the written consent of CEI Associates Inc. All rights reserved.

PROJECT:  
**CAPITAL PARK**  
LEGISLATURE COMPREHENSIVE DISTRICT  
DEVELOPMENT AREAS LP-2A & LP-2B  
500 BLOCK OF SUPERIOR ST.  
VICTORIA, B.C.  
TITLE:  
**LP-2B - MIXED-USE  
BUILDING B  
LEVEL 2 PLAN**

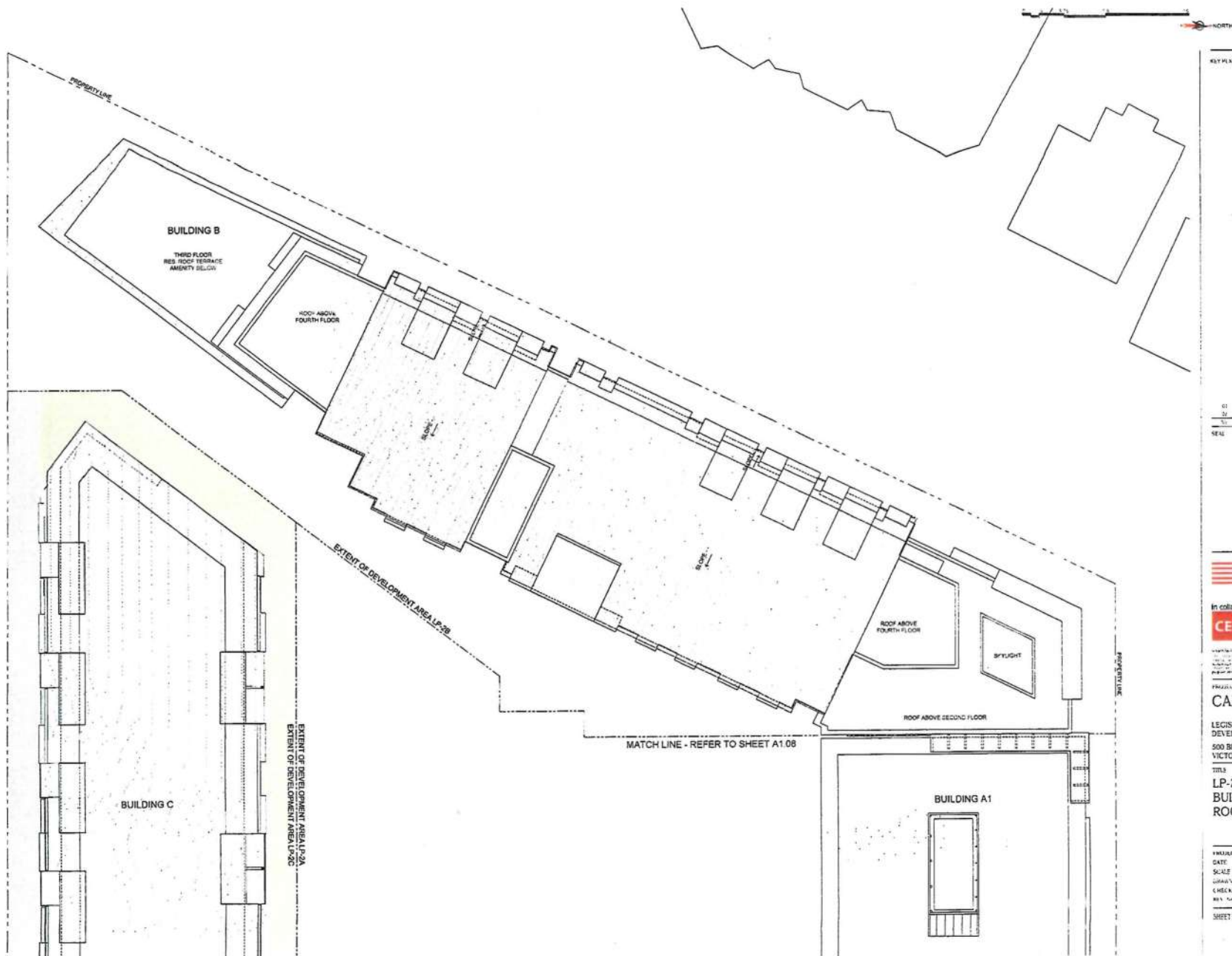
PROJECT No: 3214-0  
DATE: 10 May 2015  
SCALE: 1/150  
DRAWN BY:  
CHECKED BY:  
REV: No

SHEET No: **A4.03**









01	ARCHITECTURE	DATE	10/10/10
02	STRUCTURE	DATE	10/10/10
03	MECHANICAL	DATE	10/10/10
04	ELECTRICAL	DATE	10/10/10
05	PLUMBING	DATE	10/10/10
06	LANDSCAPE	DATE	10/10/10
07	INTERIOR DESIGN	DATE	10/10/10
08	EXTERIOR DESIGN	DATE	10/10/10
09	ENVIRONMENTAL	DATE	10/10/10
10	TRANSPORTATION	DATE	10/10/10
11	UTILITIES	DATE	10/10/10
12	SAFETY	DATE	10/10/10
13	LEGAL	DATE	10/10/10
14	MARKETING	DATE	10/10/10
15	FINANCE	DATE	10/10/10
16	OPERATIONS	DATE	10/10/10
17	MAINTENANCE	DATE	10/10/10
18	REPAIRS	DATE	10/10/10
19	RENOVATIONS	DATE	10/10/10
20	DEMOLITION	DATE	10/10/10

**endall elliot**  
architects  
in collaboration with  
**CEI Architecture**

**CAPITAL PARK**  
LEGISLATURE COMPREHENSIVE DISTRICT  
DEVELOPMENT AREAS LP-2A & LP-2B  
500 BLOCK OF SUPERIOR ST  
VICTORIA, B.C.  
TITLE  
**LP-2B - MIXED-USE  
BUILDING B  
ROOF PLAN**

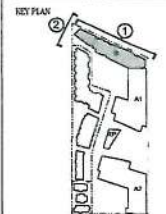
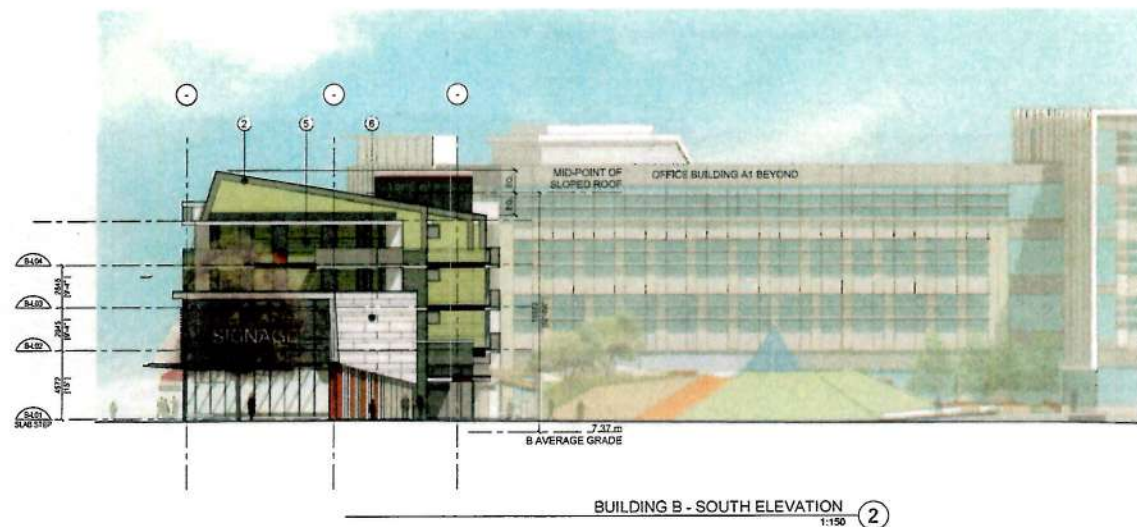
PROJECT No.	1240
DATE	10/10/10
SCALE	1/8" = 1'-0"
CHECKED BY	
REV	

SHEET No. **A4.06**





- MATERIALS KEY**
- 1 PREFINISHED STANDING SEAM METAL ROOFING/SIDING
  - 2 PREFINISHED METAL FASCIA/TRIM
  - 3 PREFINISHED ALUMINUM WINDOW FRAMING
  - 4 ACCENT COLOUR INSULATED SPANDREL GLASS
  - 5 FIBRE CEMENT SIDING
  - 6 FIBRE CEMENT PANEL
  - 7 PREFINISHED ALUMINUM COMPOSITE PANEL
  - 8 PRECAST CONCRETE COPING
  - 9 RUNNING BOND BRICK
  - 10 STACKED BOND BRICK
  - 11 CAST IN PLACE CONCRETE
  - 12 1 X 1 HORIZONTAL METAL BARS
  - 13 GLASS GUARD
  - 14 POTENTIAL FABRIC AWNING
  - 15 STEEL AND GLASS CANOPY
  - 16 STRUCTURAL GLAZING
  - 17 GREEN WALL
  - 18 POTENTIAL HORIZONTAL SHADING DEVICES
  - 19 ENGINEERED WOOD OR PAINTED METAL MEMBERS



61 EXISTING APPROPRIATE 2014 03 23  
62 DEVELOPMENT IS PART APPLICATION 2015 05 17  
63 SCALE 1:150  
SCALE

**endall elliot**  
associates  
architectural urban design  
in collaboration with  
**CEI Architecture**

Copyright Reserved  
No part of this document may be reproduced by any means, electronic or mechanical, including photocopying and recording, or by any information storage or retrieval system, without the written permission of the copyright owner.

**PROJECT**  
**CAPITAL PARK**  
LEGISLATURE COMPREHENSIVE DISTRICT  
DEVELOPMENT AREAS LP-2A & LP-2B  
500 BLOCK OF SUPERIOR ST.  
VICTORIA, B.C.  
**TITLE**  
**LP-2B - MIXED-USE  
BUILDING B  
WEST AND SOUTH  
ELEVATIONS**

**PROPERTY No.** 3244 0  
**DATE** 11 March 2015  
**SCALE** 1:150  
**DRAWN BY**  
**CHECKED BY**  
**REV No.**

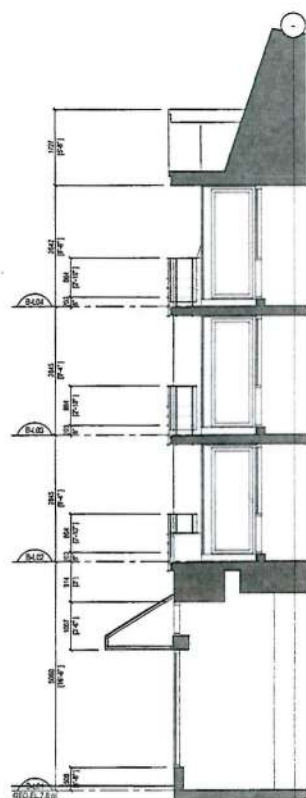
**PROJECT No.** **A4.07**



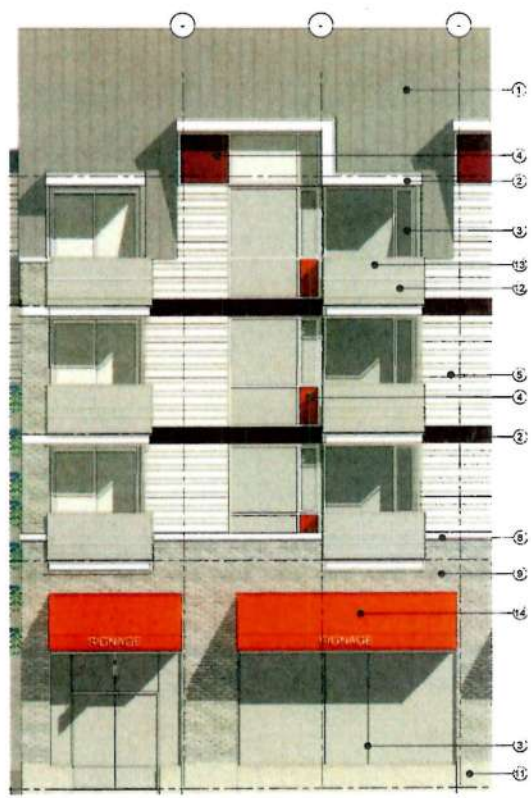
A4.08



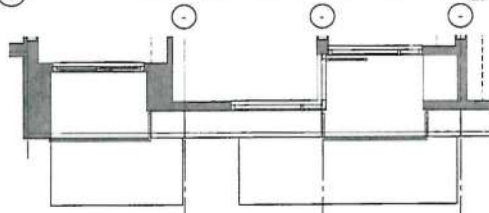




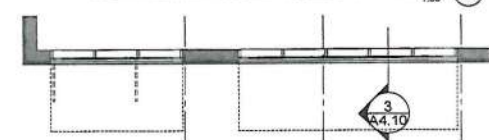
WALL TYPE 1 - SECTION 1:50 3



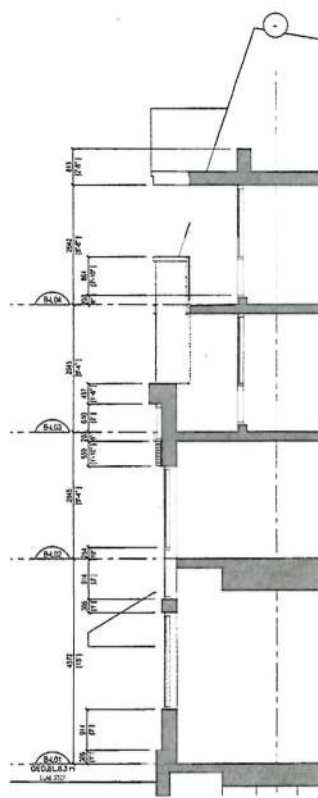
WALL TYPE 1 - WEST ELEVATION 1:50 4



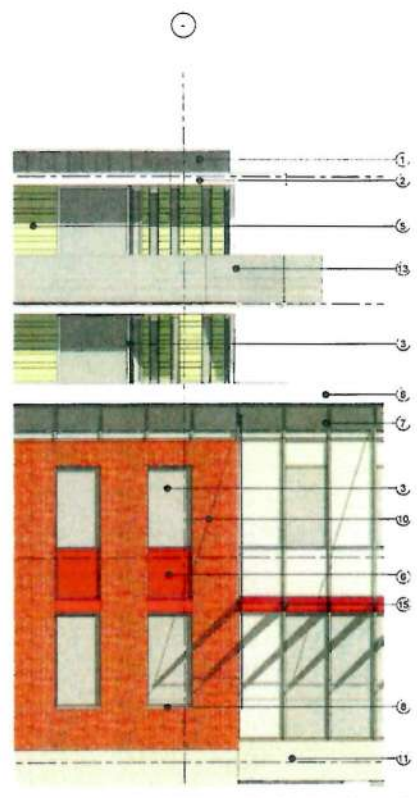
WALL TYPE 1 - TYPICAL UPPER LEVEL PLAN 1:50 2



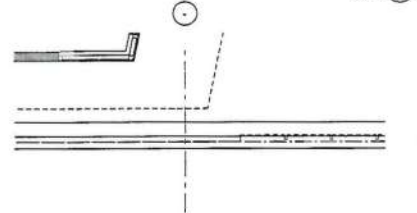
WALL TYPE 1 - LEVEL 01 FLOOR PLAN 1:50 1



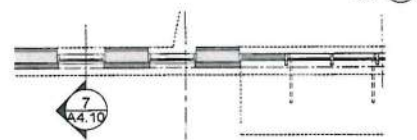
WALL TYPE 2 - SECTION 1:50 7



WALL TYPE 2 - WEST ELEVATION 1:50 8



WALL TYPE 2 - LEVEL 03 PLAN 1:50 6



WALL TYPE 2 - LEVEL 01 FLOOR PLAN 1:50 5

- MATERIALS KEY**
- 1 PREFINISHED STANDING BEAM METAL ROOFING/CLADDING
  - 2 PREFINISHED METAL FASCIA/TRIM
  - 3 PREFINISHED ALUMINUM WINDOW FRAMING
  - 4 ACCENT COLOUR INSULATED SPANDREL GLASS
  - 5 FIBRE CEMENT SIDING
  - 6 FIBRE CEMENT PANEL
  - 7 PREFINISHED ALUMINUM COMPOSITE PANEL
  - 8 PRECAST CONCRETE COPING
  - 9 RUNNING BOND BRICK
  - 10 STACKED BOND BRICK
  - 11 CAST IN PLACE CONCRETE
  - 12 1 X 1 HORIZONTAL METAL BARS
  - 13 GLASS GUARD
  - 14 POTENTIAL FABRIC AWNING
  - 15 STEEL AND GLASS CANOPY
  - 16 STRUCTURAL GLAZING
  - 17 GREEN WALL
  - 18 POTENTIAL HORIZONTAL SHADING DEVICES
  - 19 ENGINEERED WOOD OR PAINTED METAL MEMBERS

NOTES

01 ARCHITECTURAL  
02 DEVELOPMENT PLANNING  
03 LANDSCAPE ARCHITECTURE  
04 CIVIL ENGINEERING  
05 ELECTRICAL ENGINEERING  
06 MECHANICAL ENGINEERING  
07 STRUCTURAL ENGINEERING  
08 ENVIRONMENTAL ENGINEERING  
09 GEOLOGICAL ENGINEERING  
10 HISTORIC PRESERVATION  
11 LEGAL COUNSEL  
12 FINANCIAL ANALYSIS  
13 SOCIAL IMPACT STUDY  
14 TRANSPORTATION STUDY  
15 UTILITIES STUDY  
16 WATER MANAGEMENT STUDY  
17 AIR QUALITY STUDY  
18 NOISE STUDY  
19 LIGHT STUDY  
20 ENERGY STUDY  
21 SUSTAINABILITY STUDY  
22 OTHER STUDIES

PROJECT NO. 2017-001  
DATE: 11/20/2017  
SCALE: NTS  
DRAWN BY: [Name]  
CHECKED BY: [Name]  
APP. NO. [Number]

**endall elliot**  
associates  
architecture urban design

in collaboration with  
**CEI Architecture**

PROJECT LOCATION  
LEGISLATURE COMPREHENSIVE DISTRICT  
DEVELOPMENT AREAS LP 2A & LP 2B  
500 BLOCK OF SUPERIOR ST  
VICTORIA, B.C.

TITLE  
LP-2B - MIXED-USE  
BUILDING B  
ELEVATION DETAILS

SHEET NO. **A4.10**

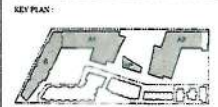




3D MODEL - OVERALL VIEW LOOKING SOUTH  
N.T.S. ①



3D MODEL - OVERALL VIEW LOOKING NORTH  
N.T.S. ②



01	REVISIONS	2014-07-21
02	REVISIONS	2015-05-17
03	REVISIONS	2015-05-17
04	REVISIONS	2015-05-17

SCALE

**endall elliot**  
associates  
architecture urban design  
In collaboration with  
**CEI** Architecture

For Sample Purposes Only  
This conceptual design is intended to provide a general impression of the proposed development and is not intended to be used for any other purpose. It is not a contract document and should not be relied upon for any other purpose. It is subject to change without notice.

**PROJECT**  
**CAPITAL PARK**  
LEGISLATURE COMPREHENSIVE DISTRICT  
DEVELOPMENT AREAS LP-2A & LP-2B  
500 BLOCK OF SUPERIOR ST.  
VICTORIA, B.C.

**TITLE**  
**3D MODEL**  
**PERSPECTIVE VIEWS**

PROJECT No:	3244 0
DATE:	30 March 2015
SCALE:	N.T.S.
DRAWN BY:	-
CHECKED BY:	-
REV. No:	-

SHEET No: **A5.01**



3D MODEL - CENTRAL PLAZA  
N.T.S. ①



3D MODEL - LOOKING SOUTH AT CORNER OF SUPERIOR & MENZIES  
N.T.S. ②

KEY PLAN



BY: [illegible] 2011.07.27  
 CD: [illegible] 2011.07.27  
 IN: 2011.07.27  
 SCALE: 1:100

**endall elliot**  
 associates  
 architecture urban design

in collaboration with  
**CEI Architecture**

PROJECT  
**CAPITAL PARK**  
 LEGISLATURE COMPREHENSIVE DISTRICT  
 DEVELOPMENT AREAS LP-2A & LP-2B  
 500 BLOCK OF SUPERIOR ST  
 VICTORIA, B.C.

TITLE  
**3D MODEL  
 PERSPECTIVE VIEWS**

PROJECT NO: 2011.07  
 DATE: 11 March 2011  
 DRAWN BY: NTS  
 CHECKED BY: [illegible]  
 REV: 1

2011.07.27

**A5.02**





3D MODEL - SOUTHWEST PLAZA AND WALKWAY TO WEST COURTYARD  
N.T.S. ①



3D MODEL - WEST COURTYARD LOOKING EAST  
N.T.S. ②



BY	ARCHITECT: KIMMY & TOY	2014.02.21
DATE	REVISED: KIMMY & TOY	2014.03.12
SCALE	1:100	1:100

**endall elliot**  
architects  
in collaboration with  
**CEI Architecture**

Copyright Reserved  
The Content and form of this document are the property of Endall Elliot Architects Inc. and CEI Architecture. No part of this document may be reproduced without the written permission of Endall Elliot Architects Inc. and CEI Architecture.

**PROJECT**  
**CAPITAL PARK**  
LEGISLATURE COMPREHENSIVE DISTRICT  
DEVELOPMENT AREAS LP-2A & LP-2B  
500 BLOCK OF SUPERIOR ST  
VICTORIA, B.C.  
**TITLE**  
**3D MODEL  
PERSPECTIVE VIEWS**

PROJECT NO.	3448
DATE	10 March 2015
SCALE	N.T.S.
DESIGNED BY	-
CHECKED BY	-
REV. NO.	-

SHEET NO. **A5.03**



3D MODEL - VIEW TO LEGISLATURE FROM PARRY WALKWAY  
N.T.S. ①



3D MODEL - EAST COURTYARD  
N.T.S. ②



01 Revise to 4/1/11  
02 Revise to 4/1/11  
03 Revise to 4/1/11  
04 Revise to 4/1/11  
05 Revise to 4/1/11  
06 Revise to 4/1/11  
07 Revise to 4/1/11  
08 Revise to 4/1/11  
09 Revise to 4/1/11  
10 Revise to 4/1/11  
11 Revise to 4/1/11  
12 Revise to 4/1/11  
13 Revise to 4/1/11  
14 Revise to 4/1/11  
15 Revise to 4/1/11  
16 Revise to 4/1/11  
17 Revise to 4/1/11  
18 Revise to 4/1/11  
19 Revise to 4/1/11  
20 Revise to 4/1/11  
21 Revise to 4/1/11  
22 Revise to 4/1/11  
23 Revise to 4/1/11  
24 Revise to 4/1/11  
25 Revise to 4/1/11  
26 Revise to 4/1/11  
27 Revise to 4/1/11  
28 Revise to 4/1/11  
29 Revise to 4/1/11  
30 Revise to 4/1/11  
31 Revise to 4/1/11  
32 Revise to 4/1/11  
33 Revise to 4/1/11  
34 Revise to 4/1/11  
35 Revise to 4/1/11  
36 Revise to 4/1/11  
37 Revise to 4/1/11  
38 Revise to 4/1/11  
39 Revise to 4/1/11  
40 Revise to 4/1/11  
41 Revise to 4/1/11  
42 Revise to 4/1/11  
43 Revise to 4/1/11  
44 Revise to 4/1/11  
45 Revise to 4/1/11  
46 Revise to 4/1/11  
47 Revise to 4/1/11  
48 Revise to 4/1/11  
49 Revise to 4/1/11  
50 Revise to 4/1/11  
51 Revise to 4/1/11  
52 Revise to 4/1/11  
53 Revise to 4/1/11  
54 Revise to 4/1/11  
55 Revise to 4/1/11  
56 Revise to 4/1/11  
57 Revise to 4/1/11  
58 Revise to 4/1/11  
59 Revise to 4/1/11  
60 Revise to 4/1/11  
61 Revise to 4/1/11  
62 Revise to 4/1/11  
63 Revise to 4/1/11  
64 Revise to 4/1/11  
65 Revise to 4/1/11  
66 Revise to 4/1/11  
67 Revise to 4/1/11  
68 Revise to 4/1/11  
69 Revise to 4/1/11  
70 Revise to 4/1/11  
71 Revise to 4/1/11  
72 Revise to 4/1/11  
73 Revise to 4/1/11  
74 Revise to 4/1/11  
75 Revise to 4/1/11  
76 Revise to 4/1/11  
77 Revise to 4/1/11  
78 Revise to 4/1/11  
79 Revise to 4/1/11  
80 Revise to 4/1/11  
81 Revise to 4/1/11  
82 Revise to 4/1/11  
83 Revise to 4/1/11  
84 Revise to 4/1/11  
85 Revise to 4/1/11  
86 Revise to 4/1/11  
87 Revise to 4/1/11  
88 Revise to 4/1/11  
89 Revise to 4/1/11  
90 Revise to 4/1/11  
91 Revise to 4/1/11  
92 Revise to 4/1/11  
93 Revise to 4/1/11  
94 Revise to 4/1/11  
95 Revise to 4/1/11  
96 Revise to 4/1/11  
97 Revise to 4/1/11  
98 Revise to 4/1/11  
99 Revise to 4/1/11  
100 Revise to 4/1/11

**endall elliot**  
associates  
architects urban designers

in collaboration with  
**CEI Architecture**

PROJECT  
**CAPITAL PARK**  
LEGISLATURE COMPREHENSIVE DISTRICT  
DEVELOPMENT AREAS LP-2A & LP-2B  
300 BLOCK OF SUPERIOR ST  
VICTORIA, B.C.

TITLE  
**3D MODEL  
PERSPECTIVE VIEWS**

PROJECT No. 30440  
DATE 30 March 2005  
SCALE N.T.S.  
DRAWN BY  
CHECKED BY  
REV. No.

SHEET No. **A5.04**





9:00 AM



10:00 AM



11:00 AM



12:00 PM



1:00 PM



2:00 PM



3:00 PM



4:00 PM

MARCH/SEPTEMBER EQUINOX  
N.T.S. 1



9:00 AM



10:00 AM



11:00 AM



12:00 PM



1:00 PM



2:00 PM



3:00 PM



4:00 PM

JUNE SOLSTICE  
N.T.S. 2



KEY PLAN



01	REVISED APPROVALS	2014.07.21
02	DEVELOPMENT REVIEW APPROVALS	2014.02.12
03	FINAL PLAN	DATE

SEAL

**endall elliot**  
architects

in collaboration with  
**CEI Architecture**

Copyright Reserved  
The content and design are the property of the designers. No part of this document may be reproduced without the written permission of the designers. The designers accept no responsibility for the accuracy of the information provided in this document. The designers are not responsible for the construction of the project or the performance of the project.

PROJECT  
**CAPITAL PARK**

LEGISLATURE COMPREHENSIVE DISTRICT  
DEVELOPMENT AREAS LP-2A & LP-2B  
500 BLOCK OF SUPERIOR ST.  
VICTORIA, B.C.

TITLE  
**SHADOW ANALYSIS**

PROJECT NO. 32446  
DATE: 9 March 2015  
SCALE: N.T.S.  
DRAWN BY: -  
CHECKED BY: -  
REV. No.: -

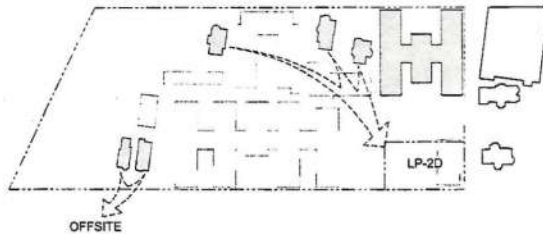
SHEET NO.

**A6.01**



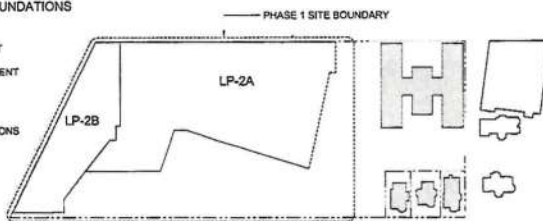
#### STAGE 1 : PHASE 1 DEMOLITION/RELOCATION

- DEMOLITION OF 525 SUPERIOR STREET, 541 MICHIGAN STREET, 544 MICHIGAN STREET, QUONSET HUT AND MSC STORAGE SHEDS.
- RELOCATION OFFSITE OF 524 & 526 MICHIGAN ST. HERITAGE HOMES
- RELOCATION ON-SITE OF 521, 530, & 545 SUPERIOR STREET HERITAGE HOMES TO NEW DEVELOPMENT PARCEL LP-2D



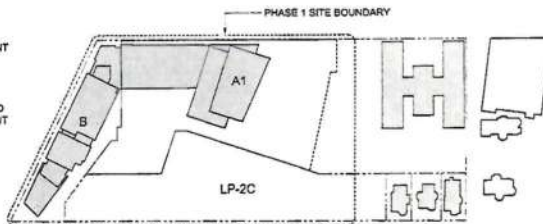
#### STAGE 2 : PHASE 1 EXCAVATION/FOUNDATIONS

- PARTIAL EXCAVATION OF DEVELOPMENT PARCEL LP-2A. FOUNDATIONS AND UNDERGROUND PARKADE BUILT TO EXTENT SHOWN WITH TEMPORARY WALL ENCLOSING EAST EDGE.
- FULL EXCAVATION OF DEVELOPMENT PARCEL LP-2B FOLLOWED BY FOUNDATIONS AND UNDERGROUND PARKADE CONSTRUCTION.
- RELOCATED HERITAGE HOMES ON DEVELOPMENT PARCEL LP-2D REHABILITATED



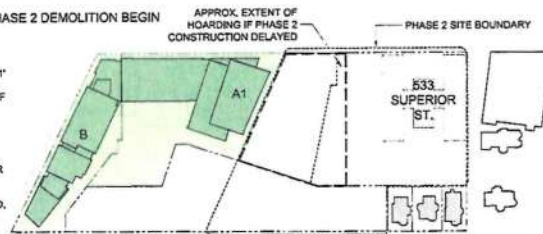
#### STAGE 3 : PHASE 1 BUILDING

- OFFICE BUILDING 'A1' BUILT ATOP EXTENT OF UNDERGROUND PARKADE ON DEVELOPMENT PARCEL LP-2A
- MIXED-USE COMMERCIAL/RESIDENTIAL BUILDING 'B' BUILT ATOP UNDERGROUND PARKADE STRUCTURE ON DEVELOPMENT PARCEL LP-2B



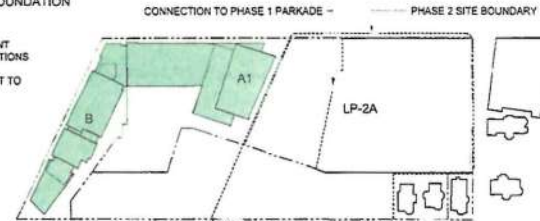
#### STAGE 4 : PHASE 1 COMPLETION/PHASE 2 DEMOLITION BEGIN

- DEVELOPMENT PARCEL LP-2A PHASE 1 CONSTRUCTION OF OFFICE BUILDING 'A1' AND PARKADE COMPLETED. LANDSCAPING INSTALLED ON EXTENT OF LOT AS INDICATED. HOARDING INSTALLED AT GRADE TO PREVENT ACCESS TO UN-LANDSCAPED AREAS OVER UNDERGROUND PARKADE.
- DEMOLITION OF EXISTING 533 SUPERIOR STREET BUILDING
- IF CONSTRUCTION OF PHASE 2 DELAYED, 533 SUPERIOR STREET BUILDING TO REMAIN AND HOARDING INSTALLED AS PER DIAGRAM AND AS ILLUSTRATED IN IMAGE OPPOSITE
- DEVELOPMENT PARCEL LP-2B CONSTRUCTION COMPLETED AND LANDSCAPING INSTALLED.



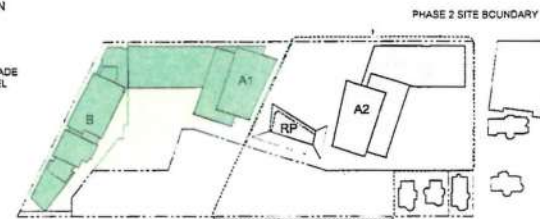
#### STAGE 5 : PHASE 2 EXCAVATION/FOUNDATION

- PHASE 2 EXCAVATION OF DEVELOPMENT PARCEL LP-2A FOLLOWED BY FOUNDATIONS AND CONSTRUCTION OF REMAINING UNDERGROUND PARKADE TO CONNECT TO PHASE 1.



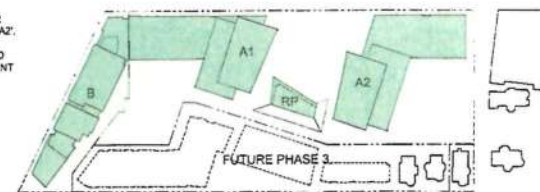
#### STAGE 6 : PHASE 2 CONSTRUCTION

- PHASE 2 CONSTRUCTION OF OFFICE BUILDING 'A2' AND RETAIL PAVILION BUILDING OVER UNDERGROUND PARKADE STRUCTURE ON DEVELOPMENT PARCEL LP-2A



#### STAGE 7 : PHASE 2 COMPLETION

- DEVELOPMENT PARCEL LP-2A PHASE 2 CONSTRUCTION OF OFFICE BUILDING 'A2', RETAIL PAVILION AND PARKADE COMPLETED. LANDSCAPING INSTALLED AND COMPLETED ON REMAINING EXTENT OF LOT LP-2A.



PHASE 1 INTERIM CONDITION IF PHASE 2 CONSTRUCTION DELAYED (SUPERIOR STREET VIEW)

NO	REVISIONS	DATE
1	ISSUED FOR PERMIT	2014-07-21
2	ISSUED FOR PERMIT	2014-07-21
3	ISSUED FOR PERMIT	2014-07-21
4	ISSUED FOR PERMIT	2014-07-21

DATE

**endall elliot**  
ARCHITECTS

In collaboration with

**CEI Architecture**

#### PROJECT CAPITAL PARK

LEGISLATURE COMPREHENSIVE DISTRICT DEVELOPMENT AREAS LP-2A & LP-2B  
300 BLOCK OF SUPERIOR ST.  
VICTORIA, B.C.

#### PHASING DIAGRAMS

PROJECT NO: 2014-07  
DATE: 8-Nov-2013  
SCALE: 1:1250  
DRAWN BY: [Name]  
CHECKED BY: [Name]  
DATE: [Date]

A6.02



REVISION	DATE	DESCRIPTION
1	2023-01-10	ISSUED FOR PERMIT
2	2023-01-10	ISSUED FOR PERMIT

Capital Park  
 Victoria, BC

## OVERALL SITE PLAN

REVISION	DATE	DESCRIPTION
1	2023-01-10	ISSUED FOR PERMIT
2	2023-01-10	ISSUED FOR PERMIT
3	2023-01-10	ISSUED FOR PERMIT
4	2023-01-10	ISSUED FOR PERMIT
5	2023-01-10	ISSUED FOR PERMIT
6	2023-01-10	ISSUED FOR PERMIT
7	2023-01-10	ISSUED FOR PERMIT
8	2023-01-10	ISSUED FOR PERMIT
9	2023-01-10	ISSUED FOR PERMIT
10	2023-01-10	ISSUED FOR PERMIT

LDP1.00





F7 LOOP STYLE BIKE RACK



F3 STEPPED WATER FEATURE



F2 BUBBLERS W/ NOZZLES FLYING IN GRADE



F7 COMPOSITE WOOD SLAT BENCH



F4 WOOD BENCH



H1 WEATHERING STEEL WALL

HARDSCAPE LEGEND	
KEY	DESCRIPTION
H1	WEATHERING STEEL WALL 1x 600mm x 25x100mm
H2	CIP CONCRETE WALL
H3	COMPOSITE WOOD SLATS 1x 100mm x 25x100mm
H4	METAL PICKET GLASS RAIL - TYPE 1 SEE ARCHITECTURAL DRAWINGS
H5	METAL GLASS RAIL - TYPE 2 SEE ARCHITECTURAL DRAWINGS
H6	GLASS GUARDRAIL SEE ARCHITECTURAL DRAWINGS
H7	WOOD SLATS 1x 100mm x 25x100mm

PAVING LEGEND	
KEY	DESCRIPTION
P1	DECORATIVE NATURAL STONE PAVING MORTAR SET
P2	CONCRETE UNIT PAVES - TYPE 1
P3	CONCRETE UNIT PAVES - TYPE 2
P4	CONCRETE UNIT PAVES - TYPE 3 HOLLAND STYLE HERRINGBONE PATTERN - 8" MIN THICKNESS
P5	CONCRETE UNIT PAVES - TYPE 4 HYDRAPRESSURE SLABS 1000 x 500 x 40mm OR SIMILAR
P6	CONCRETE UNIT PAVES - TYPE 5 HYDRAPRESSURE SLABS 1000 x 500 x 40mm OR SIMILAR
P7	COMPOSITE WOOD SLAT PAVING 1x 100mm x 25x100mm
P8	RESILIENT PLAY SURFACE
P9	METAL GRATE W/ 10mm LED STRIP LIGHTING AND METAL TIE BAR
P10	CIP CONCRETE - TYPE 1 BRUSH FINISH WITH TOOLED JOINTS
P11	CIP CONCRETE - TYPE 2 BRUSH FINISH WITH TOOLED JOINTS
P12	CONCRETE SIDEWALK AS PER CITY OF VICTORIA SPECIFICATIONS
P13	ASPHALTIC PAVING AS PER CITY OF VICTORIA SPECIFICATIONS
P14	CIP CONCRETE BAND

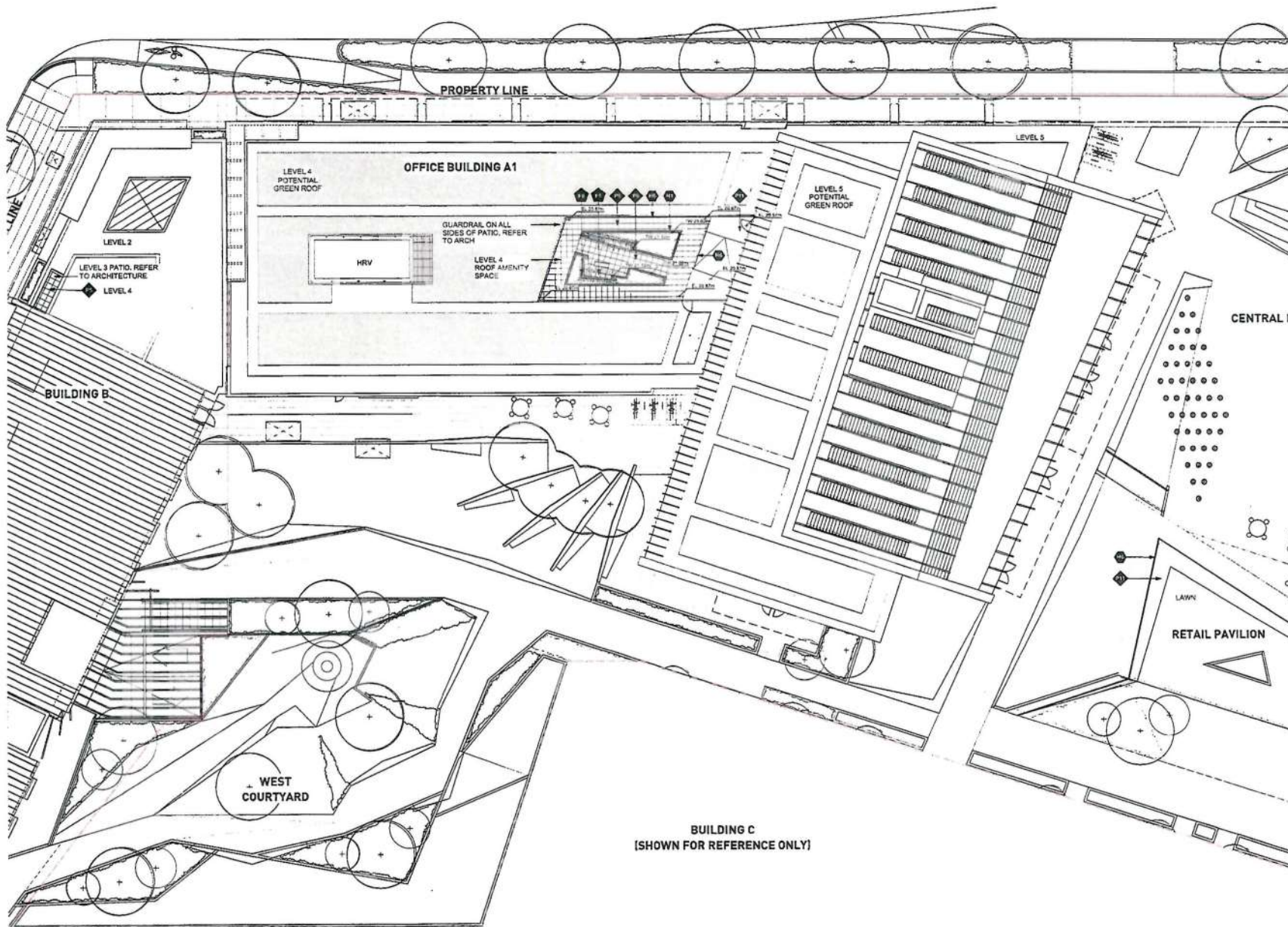
SITE FURNISHING LEGEND	
KEY	DESCRIPTION
F1	WATER FEATURE - TYPE 1 REFLECTING POOL
F2	WATER FEATURE - TYPE 2 BUBBLERS W/ 10mm NOZZLES SET 100mm IN GRADE
F3	WATER FEATURE - TYPE 3 STEPPED WATER FEATURE
F4	EP - INTERNAL RAIN WATER CHANNEL
F5	WOOD BENCH - TYPE 1
F6	WOOD BENCH - TYPE 2 100mm x 25mm x 100mm
F7	BIKE RACK LOOP STYLE
F8	METAL TRELLIS ACROSS PATIO
F9	BOLLARD 100mm x 100mm

PROJECT INFO	
PROJECT NO.	1432
DATE	2014
PROJECT NAME	1432 TERNAN
PROJECT NO.	15-01-01 1:17:10 PM
PROJECT	20/1/2014
PROJECT	20/1/2014
PROJECT	20/1/2014









**PWL partnership**  
 PwL Partnership  
 1111 West 10th Avenue  
 Suite 100  
 Vancouver, BC V6H 2Y9  
 Tel: 604.681.1111  
 Fax: 604.681.1112  
 Email: info@pwl.ca

**Jawi Properties Ltd.**  
**CONC=RT**

CONC=RT  
 1111 West 10th Avenue  
 Suite 100  
 Vancouver, BC V6H 2Y9  
 Tel: 604.681.1111  
 Fax: 604.681.1112  
 Email: info@pwl.ca



**etdell elliot**

**CEI Architecture**

Capital Park  
 Victoria, BC

**MATERIALS AND  
 GRADING PLAN  
 BLDG A1 - ROOF LEVEL**

Scale	1:150
Sheet No.	1432
Rev.	1432 (Preliminary)
Date	15-5-5 at 3:17:10 PM
Drawn by	JB / LN
Checked by	GB

**LDP 1.03**





WATER FEATURE - REFLECTING POOL



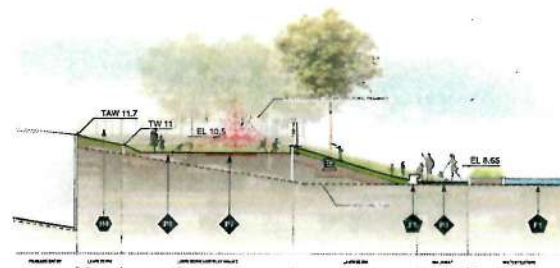
FOLDED LAWN



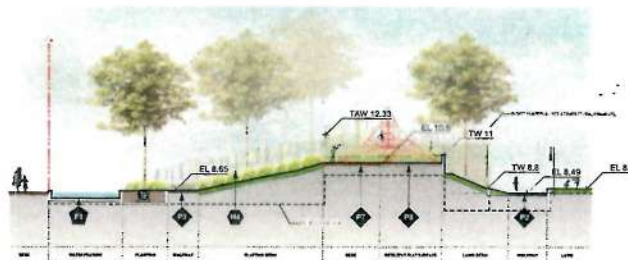
ARTIST'S FORM OF ABSTRACTION



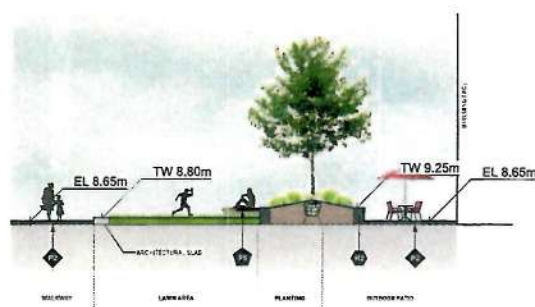
PLAY ELEMENTS



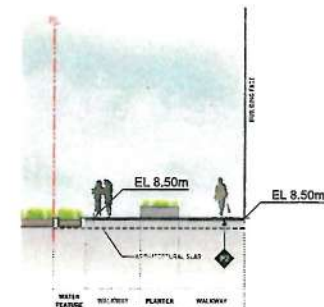
SECTION 1 PLAY YOUND  
1:150



SECTION 2 PLAY YOUND  
1:150



SECTION 3 WEST COURTYARD  
1:100



SECTION 4 WEST SPINE  
1:100



PWL Partnership  
PWL Partnership Landscape Architects Inc.  
445 West 10th Street, Suite 200  
Vancouver, BC V6Y 1P8  
www.pwlpartnership.ca  
Tel: 604.681.1111  
Fax: 604.681.1112



CONCERT

CONCERT  
NO. DATE SYSTEM/PLAN  
1. 2/14/2011 BLDG FOR DP



CEI Architecture

Capital Park  
Victoria, BC

SECTIONS AND  
ELEVATIONS  
BLDG A1

AS NOTED

PROJECT NO. 1432  
DATE  
PROJECT NAME 1432 Seftonville  
PROJECT 16-0-0 at 3:53:46 PM  
PROJECT 20 L2 16-0-0 at 3:53:46 PM  
PROJECT 20 L2 16-0-0 at 3:53:46 PM

LDP 1.04



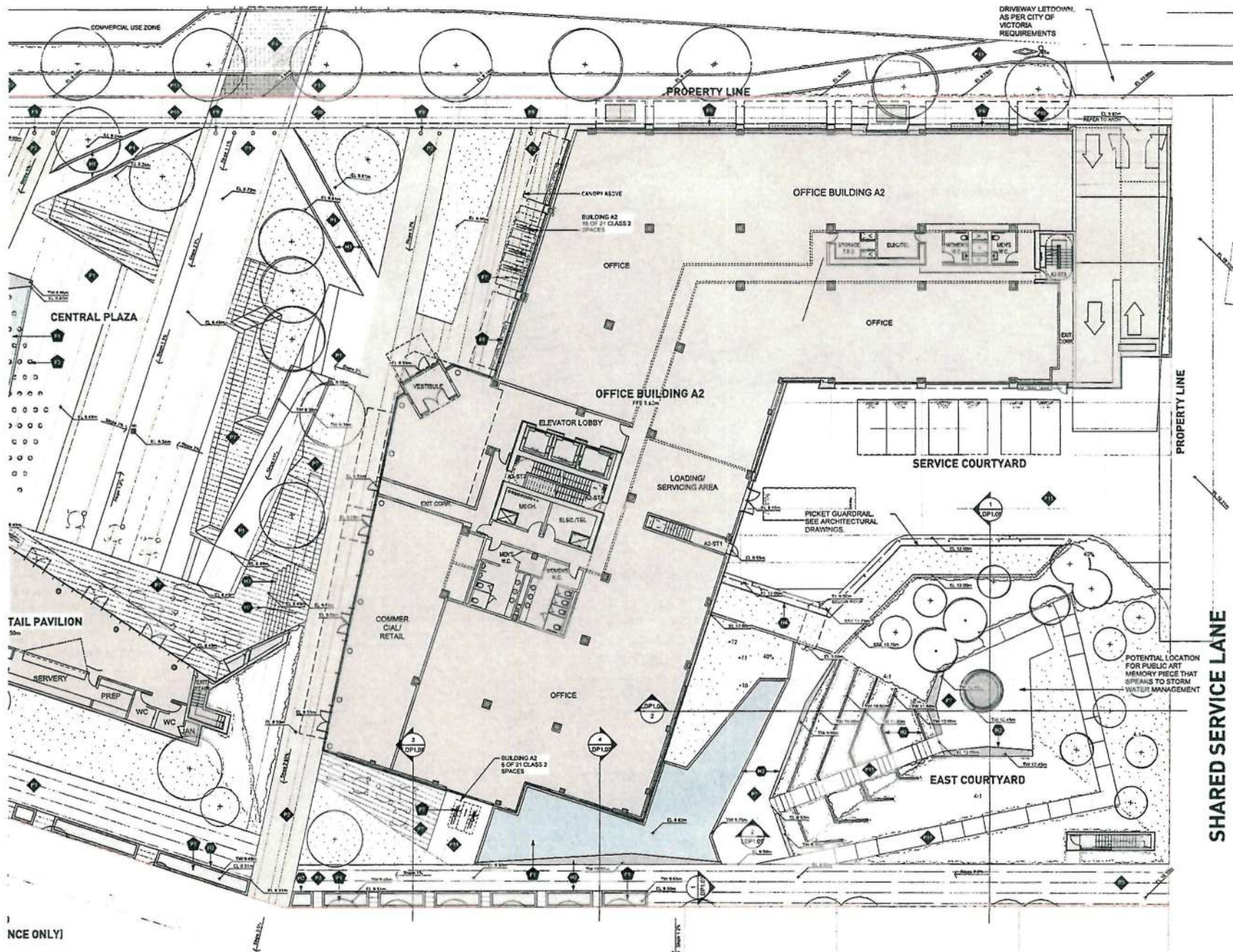
**Capital Park  
Victoria, BC**

PERSPECTIVES  
BLDG A1



LDP 1.05





PWL Partnership is a registered association of  
 Javi Properties Ltd.  
 1000 West 10th Avenue  
 Suite 1000  
 Victoria, BC V8W 2E1  
 Tel: (250) 383-1111  
 Fax: (250) 383-1112



CONCART

CONCART Ltd. 451-01  
 1000 West 10th Avenue  
 Suite 1000  
 Victoria, BC V8W 2E1  
 Tel: (250) 383-1111  
 Fax: (250) 383-1112



endall elliot



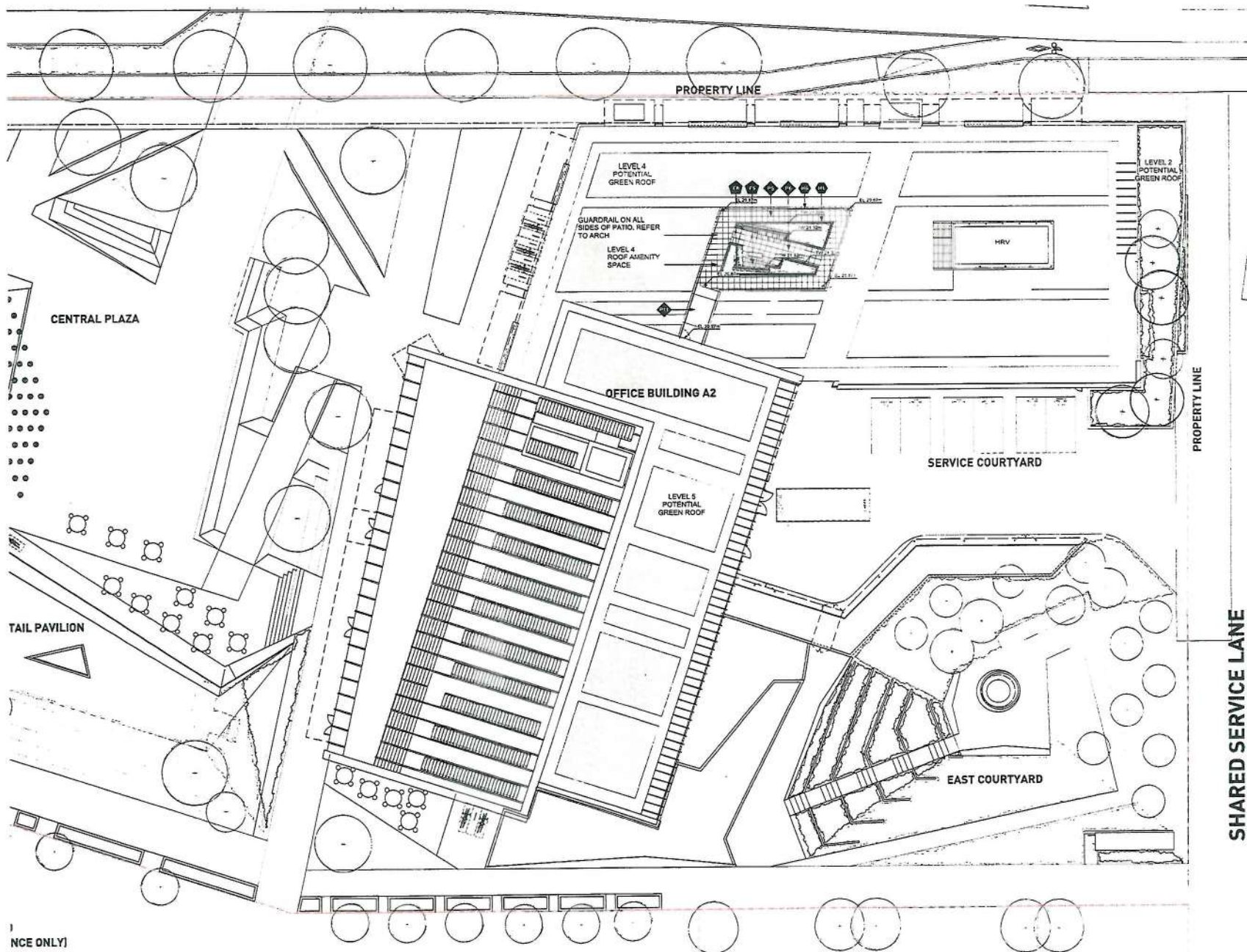
Capital Park  
 Victoria, BC

MATERIALS AND  
 GRADING PLAN  
 BLDG A2 - GROUND LEVEL

Scale	1:150
Project No.	1432
Sheet	1432 Plan/Grading
Date	15th Nov 2017
Author	15th Nov 2017
Checker	15th Nov 2017
Designer	15th Nov 2017
Reviewer	15th Nov 2017
Approver	15th Nov 2017

LDP 1.06





1  
NCE ONLY]

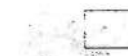
PWL partnership

1000 West 10th Avenue, Suite 100  
Vancouver, BC V6H 1A1  
Tel: 604.681.1111  
Fax: 604.681.1112  
www.pwl.ca

Jaw Properties Ltd.

CONC=RT

DATE: 01/11/2017  
DESCRIPTION: 05/11/2017



endall elliot

CEI Architecture

Capital Park  
Victoria, BC

MATERIALS AND  
GRADING PLAN  
BLDG A2 - ROOF LEVEL

Scale	1:150
Sheet No.	1432
Project No.	1432
Client	Capital Park
Design	10-01-2017 at 2:17:10 PM
Drawn	JB / LN
Checked	OR

LDP 1.07





P1 WATER FEATURE - REFLECTING POOL



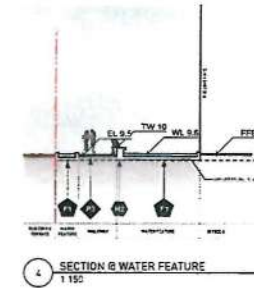
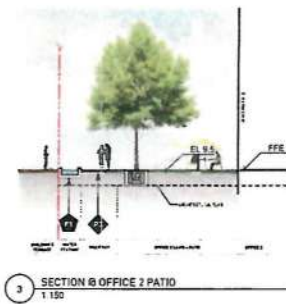
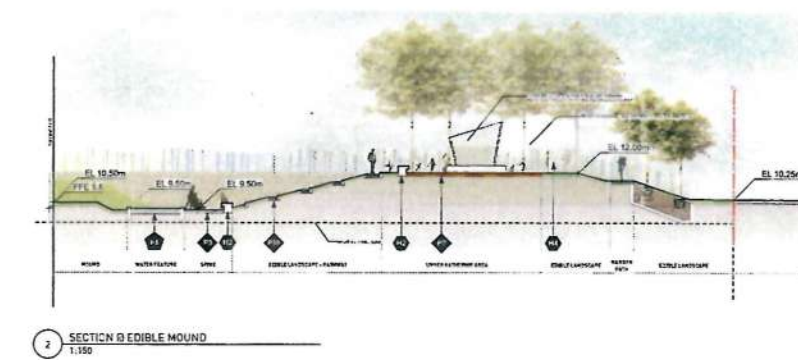
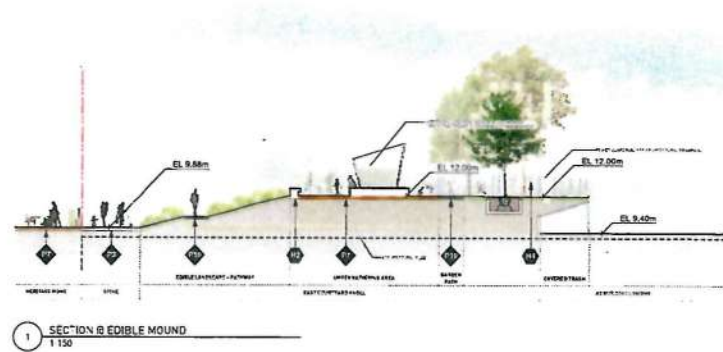
EDIBLE LANDSCAPE



ARTISTIC FORM OF ABSTRACTION



PUBLIC ART SPEAK TO THE MESSAGE OF SUSTAINABLE WATER MANAGEMENT



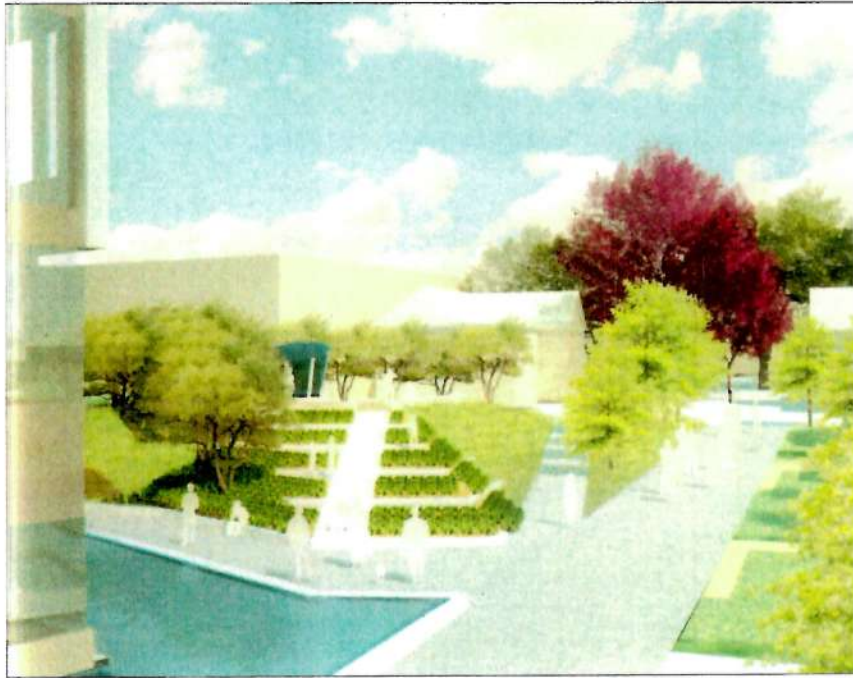
**PWL partnership**  
 PWL Partnership is a leading provider of professional services in the construction industry. We are a team of experts in design, engineering, and construction management. Our services are tailored to meet the needs of our clients, ensuring the highest quality and most efficient results.

**Javel Properties Ltd**  
**CONCERT**  
 Javel Properties Ltd is a leading provider of professional services in the construction industry. We are a team of experts in design, engineering, and construction management. Our services are tailored to meet the needs of our clients, ensuring the highest quality and most efficient results.

**endali elliot**  
**CEI Architecture**  
 endali elliot is a leading provider of professional services in the construction industry. We are a team of experts in design, engineering, and construction management. Our services are tailored to meet the needs of our clients, ensuring the highest quality and most efficient results.

**SECTIONS AND ELEVATIONS BLDG A2**  
 SCALE: 1:150  
 DATE: 14/02/2023  
 DRAWN BY: 14322  
 CHECKED BY: 14322  
 PROJECT: 14322  
 SHEET: 15-3-8  
 DATE: 15-03-23  
 TIME: 3:03:45 PM  
 DRAWN BY: JB UN  
 CHECKED BY: GB DL  
 PROJECT: 14322

**LDP 1.08**



1 MOUND AND PATHWAY AT BA2  
NTS



2 MOUND AND PATHWAY AT BA2  
NTS



PWL Partnership  
1000 West 10th Avenue  
Suite 1000  
Vancouver, BC V6H 3G9  
Tel: 604.681.1111  
Fax: 604.681.1112  
www.pwl.ca



CONCERT  
1000 West 10th Avenue  
Suite 1000  
Vancouver, BC V6H 3G9  
Tel: 604.681.1111  
Fax: 604.681.1112  
www.pwl.ca



Capital Park  
Victoria, BC

PERSPECTIVES  
BLDG A2

Sheet	
1	NTS
Project No. 1432	
Date: 1432 08 14/08/2014	
Project: 1432 08 14/08/2014	
Drawn: CL	Checked: SL 08

LDP 1.09