

Harbour Vitality Principles



Purpose

1. Report to Council with summary of feedback received on draft *Harbour Vitality Principles*
2. Present proposed text amendments
3. Seek approval of *Harbour Vitality Principles*

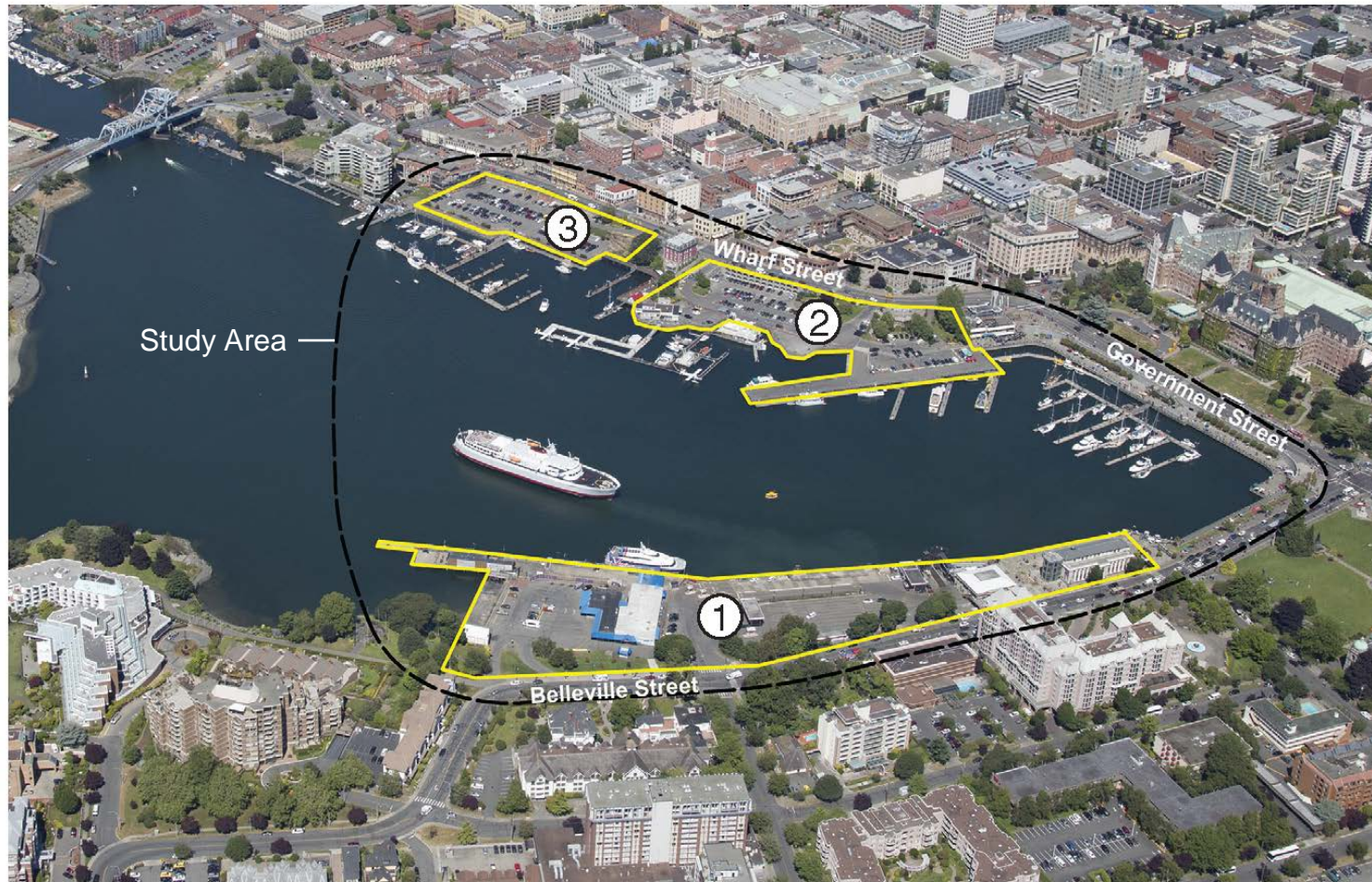
Background

On July 24, 2014 Council approved the following motion:

That Council:

1. Direct staff to seek public feedback on the draft *Harbour Vitality Principles*.
2. Direct staff to report back to Council with the draft *Harbour Vitality Principles* and a summary of additional public engagement comments no later than September 2014.
3. Following Council's approval of the draft *Harbour Vitality Principles*, direct staff to collaborate and liaise with key Inner Harbour landowners to prepare an Implementation Strategy and report back to Council.

Strategic Sites



1. Belleville Terminal Site

2. Ship Point Site

3. Lower Wharf Street Site

Public Feedback

- Total of 31 responses received (digital and hard copy)
- Generally supportive of process and principles
- Additional comments directed at wide range of topic areas such as:
 - parks and public space
 - pedestrian and cycling paths
 - marine uses
 - transportation
 - land use
 - building heights
 - detailed design considerations
 - opportunities for First Nations

Proposed Amendments

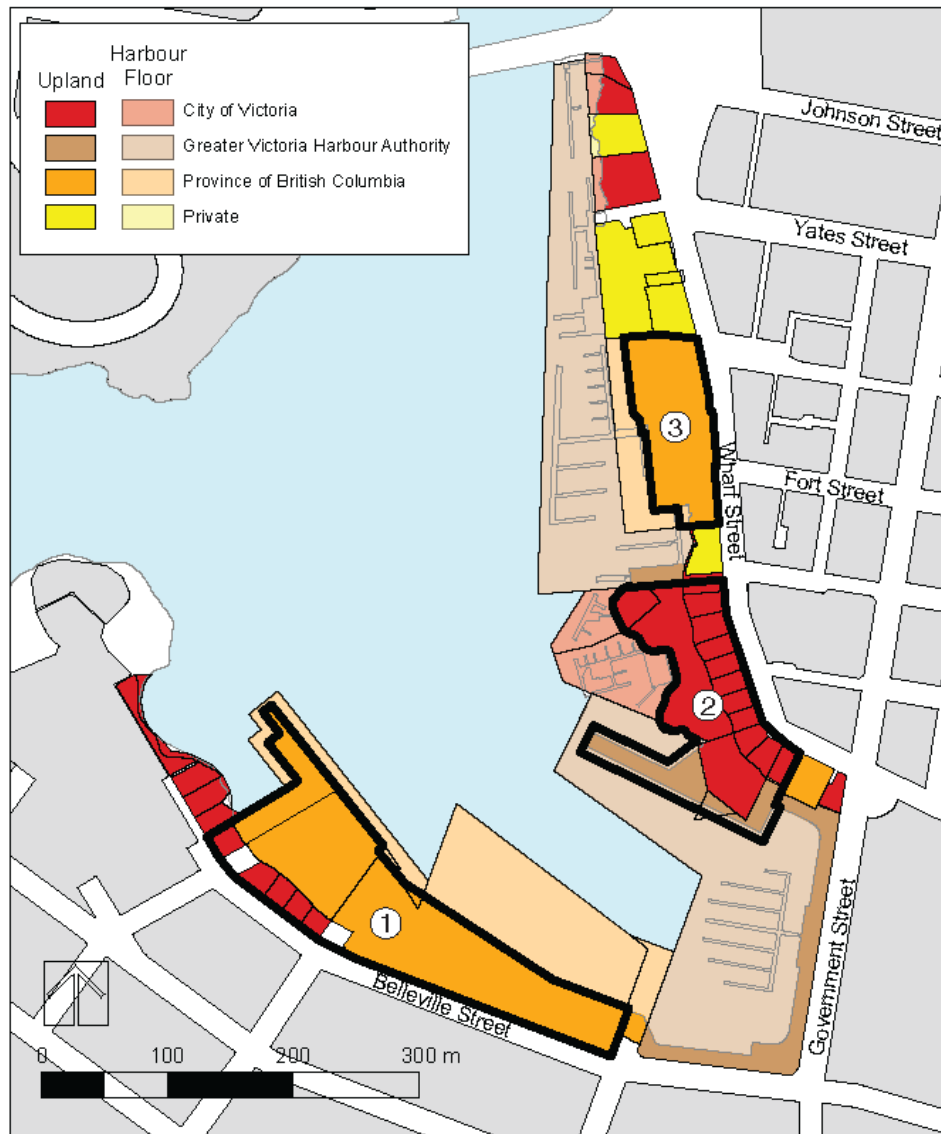
- Developed in consideration of public feedback
- Do not respond to comments on conceptual illustrations or matters that are not within the scope of the project
- Provide improved clarity and strengthen Overarching and Site Specific Guiding Principles

Recommendations

Staff recommend that Council consider:

1. Approving the draft Harbour Vitality Principles including the proposed text amendments in Attachment 1.

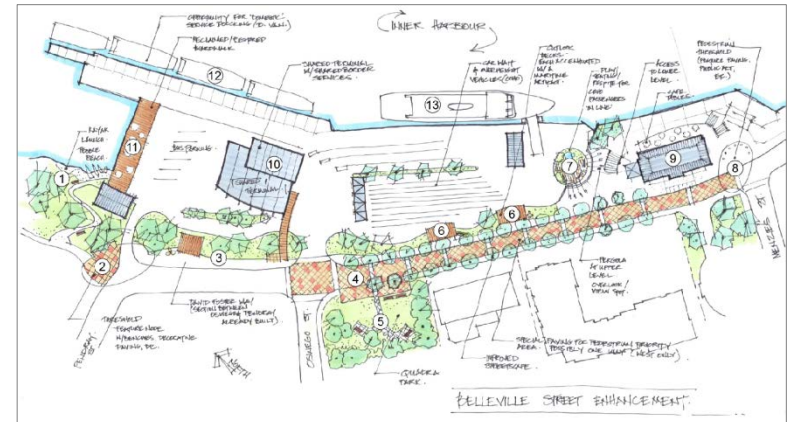
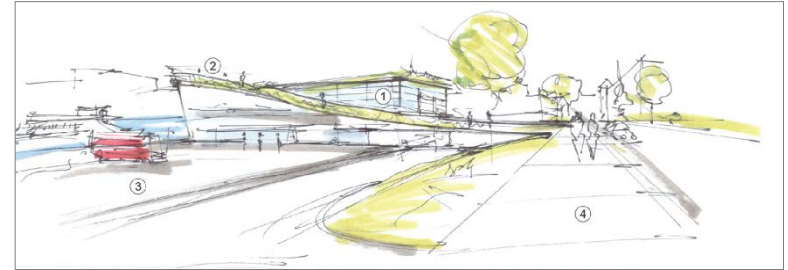
Property Ownership



1. Belleville Terminal Site
2. Ship Point Site
3. Lower Wharf Street Site

Belleville Terminal Site Guiding Principles

1. Strengthen key role as transportation hub
2. Integrate high quality design with form and function
3. Provide enhanced public access
4. Create a welcoming gateway environment



Ship Point Site Guiding Principles

1. Incorporate site design that supports a range of active uses
2. Integrate strong connectivity and access
3. Enhance Ship Point as an inviting year-round destination
4. Encourage vitality through high-quality design



Lower Wharf Street Site Guiding Principles

1. Integrate strong connectivity and access
2. Create a pedestrian-friendly environment
3. Encourage vitality through high-quality design
4. Reflect the area's cultural and historic significance
5. Enhance the site as a landmark location

