



| Be a prosperity pollinator

MEMO TO COUNCIL

Date: October 16, 2014 **From:** Sage J. Baker
Economic Development
Subject: Update re Belleville Terminal

Executive Summary

The purpose of this memo is to provide Council with an update related to a core area of economic contribution within our inner harbour - Belleville Terminal, and to seek Council's support to provide a letter to the Ministry of Transportation and Infrastructure

Recommendation

That Council:

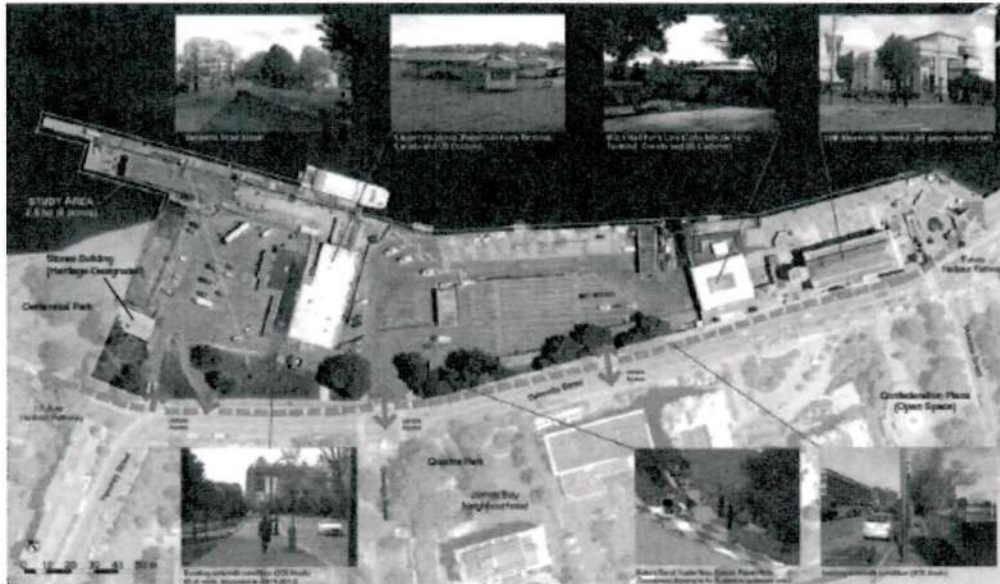
1. Authorize the Mayor to send a support letter, in the form acceptable to the City Manager, to the Province of British Columbia's Ministry of Transportation and Infrastructure to express the City's support of the Province's potential investment in Belleville Terminal generally as set out in this memorandum.

Additional Information

When the Provincial Capital Commission was dissolved in March 2014, the property known as 'Belleville Terminal' transferred ownership to the Province of British Columbia under the Ministry of Transportation and Infrastructure.

Image below from the City of Victoria's Harbour Vitality Principles (attached as Appendix 1)

Belleville Terminal Site: Existing Context



Belleville Terminal is a key international gateway to Victoria's working harbor and a key economic contributor for the region welcoming 675,000 passengers per year. Economic impact studies from the two core operators indicate that for 2012 the combined operations generated more than \$180 million annually in economic activity and together support approximately 4,450 jobs in the Victoria region.

There have been a number of conversations over the years around the potential evolution of the site; however, the most pressing issue is that the terminal is in need of urgent repairs as dock infrastructure has suffered from a historical lack of maintenance. The Ministry of Transportation and Infrastructure (MoTI) recognizes this and as looking at bringing a comprehensive proposal and project plan forward to the Treasury Board within the Province, which would look at mandatory upgrades to address public safety concerns and provide secure docking facilities for vessel use.

However, given the importance of this site for the community, there has been a working group assembled to discuss the longer-term objectives and desires for the site. As landowner, MoTI is the project lead and they have been working to ensure alignment on the high level guiding principles as they move closer towards execution. These guiding principles (in draft form) from MoTI are attached as Appendix 2 and are synchronized with both Tourism Victoria's Passenger Gateway Strategy and the City of Victoria's Harbour Vitality Principles.

One of the main components from the City's Harbour Vitality Principles is the next phase, evolving towards a focus on execution and evolution of these core sites with community involvement. The Belleville Terminal offers the opportunity for a meaningful collaboration between the Province, the ferry operators, the City, and others to realize the guiding principles for the site and to ensure the Belleville Terminal remains a successful key international gateway.

Belleville's evolution will be a multiphase approach involving multiple key stakeholders. The three proposed phases for discussion and consideration are included as part of the high level overview from MoTI (Appendix 2); however, the key point currently is addressing the urgent dock repair and looking to help encourage the Province to invest in this essential infrastructure. With this, staff would like council to support sending a letter to MoTI similar to those attached from Tourism Victoria (Appendix 3), the James Bay Neighbourhood Association (Appendix 4) and supporting the importance and urgency of the required investment into this transportation infrastructure (Phase 1 of the multiple phase approach outlined).


It is also understood that under the lead of MoTI, the required stakeholders would be involved in future planning, budgeting and scheduling of the activities associated with the later two phases of the evolution of this terminal and those phases will involve the relevant stakeholders as and when appropriate.

Respectfully submitted



Sage J. Baker
Executive Director Economic Development

Report accepted and recommended by the General Manager, VCC:


Jocelyn Jenkyns

Appendix 1 – City of Victoria's Harbour Vitality Report (draft attached as PDF)

Appendix 2 – Province of BC Ministry of Transportation and Infrastructure overview Belleville Terminal moving forward (draft attached as PDF)

Appendix 3 – Tourism Victoria support letter & Passenger Gateway Strategy (attached as PDF)

Appendix 4 – James Bay Neighbourhood Association support letter (attached as PDF)