

An architectural rendering of the Johnson Street Bridge Replacement Project. The bridge features a modern design with a large, white, curved arch structure supported by concrete piers. It spans a body of water with several small boats. In the background, there are modern buildings and a clear blue sky with scattered clouds.

Johnson Street Bridge Replacement Project

Governance & Priorities Committee Meeting
July 24, 2014

Progress Update

- Significant progress has been made on the construction of the bridge foundation
- Fabrication of the bascule leaf is progressing
- Project team is tracking key project risks on a weekly basis

Financial Update

- PCL has invoiced \$11.9 million representing 18.9% of the total contract amount
- This includes \$1.65 million for prepayment of two-thirds of the structural steel in China
- MMM has invoiced \$7.36 million of \$9.36 million for design, permitting, construction administration and project management

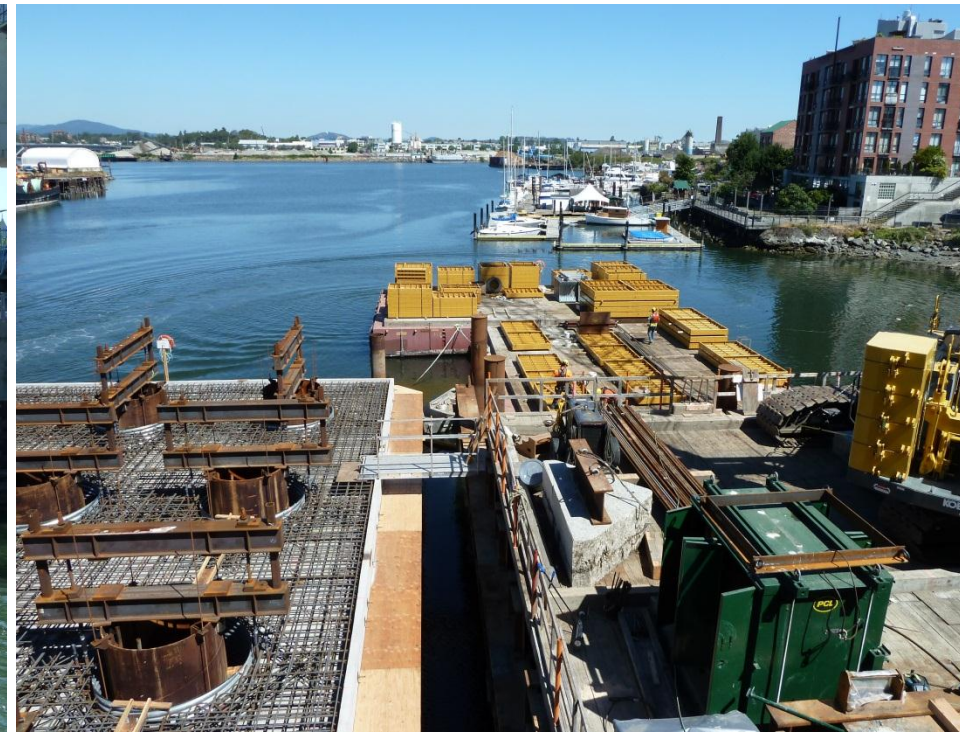
Financial Update

- To date, \$872,880 has been allocated from the project contingency with \$1.94 million remaining

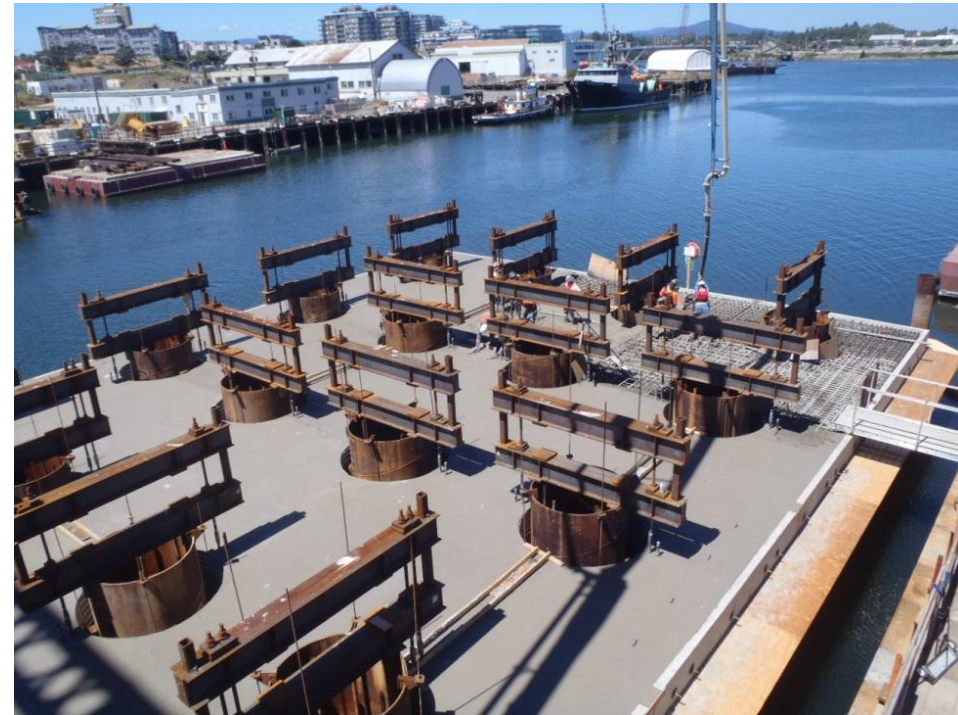
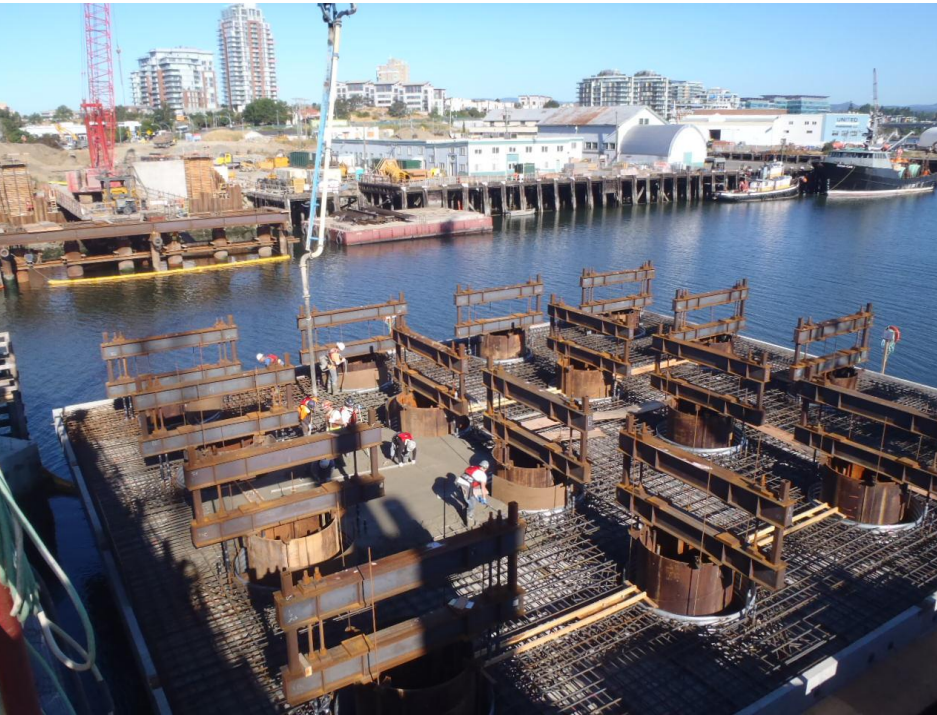
Construction Update



Bascule Pier



Bascule Pier Concrete Pour



Rest Pier and West Abutment



Grading of West Approach Road



Bascule Leaf Fabrication



Safety and Environment

- PCL has robust safety and environmental programs. No recordable incidents to date.
- Independent environmental monitor in place to ensure compliance with Ministry of Environment and Department of Fisheries and Oceans regulations.
- To date, contractor has maintained a high level of compliance.

Safety and Environment

- Archeological monitors from Stantec and representatives from First Nations are on site during excavation work.
- Minor artifacts have been found: iron fragments, clay pipes, glass bottles, and nails.
- Items are documented and eventually go to the Royal BC Museum.

Safety and Environment

- While the project is in an area of cultural significance, it has experienced land disturbance over the years as a result of development activities, meaning the location of artifacts recovered provide limited interpretive value.

Upcoming Construction Activity

West side:

- Retaining wall construction
- Rest pier construction
- West abutment construction
- New intersection at Harbour and Esquimalt Roads
- New connection to existing bridge to open in September



Upcoming Construction Activity

East side & Harbour:

- Bascule pier floor and wall construction
- Intermediate pier piling
- Excavation for east abutment
- BC Hydro to relocate a hydro duct for power service to the new bridge



Thank You