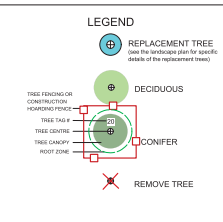
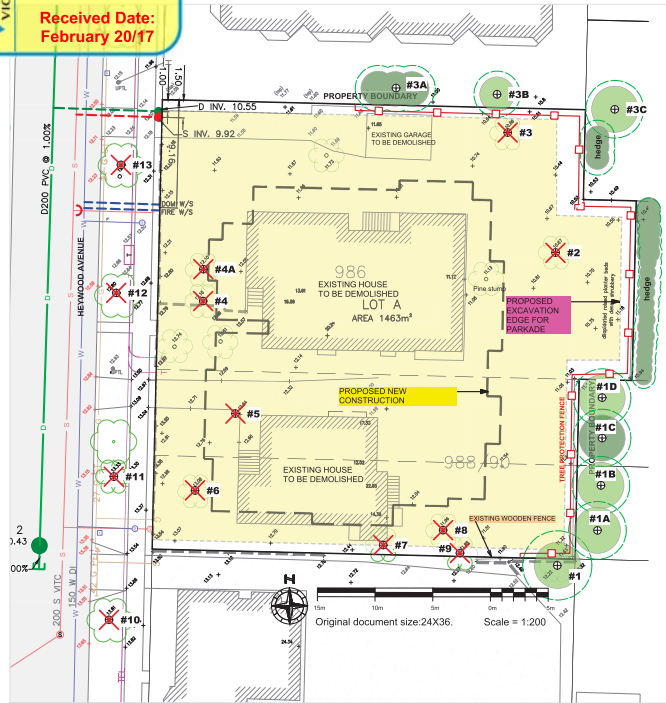




Revisions

Received Date:
February 20/17



TREE INVENTORY TABLE

G&A Tree ID	Location	Common Name	DBH (cm)	Protected Root Zone Radius (m)	Crown Radius (m)	Health (Good, Fair, Poor)	Structural Condition (Good, Fair, Poor)	Bylaw Protected Tree?	Comments / Notes	Recommendations
1	Off-site	Silver Birch	12	3	2	Good	Good	No	Provides visual screening	Retain and protect
1A	Off-site	Golden bamboo	multiple stem	2	2	Good	Good	No	Provides visual screening	Retain and protect
1B	Off-site	Red cedar (hedge shaped)	multiple stem	3	2	Good	Fair	No	Provides visual screening	Retain and protect
1C	Off-site	Ornamental deciduous	14	3	2	Good	Fair	No	Provides visual screening	Retain and protect
1D	Off-site	Golden bamboo	multiple stem	2	2	Good	Good	No	Provides visual screening	Retain and protect
2	986 Heywood Avenue	Fruiting Apple	24	5	4	Fair	Fair	No	In conflict with construction.	Remove tree
3	988 Heywood Avenue	Fruiting Apple	30	5	3	Good	Good	No	In conflict with construction.	Remove tree
3A	Off-site	Red cedar (hedge shaped)	multiple stem	3	2	Good	Fair	No	Provides visual screening	Retain and protect
3B	Off-site	Fruit tree	20	3	2	Good	Fair	No	Provides visual screening	Retain and protect
3C	Off-site	Ornamental deciduous	20	3	2	Good	Fair	No	Provides visual screening	Retain and protect
4	988 Heywood Avenue	Ornamental plum	18	3	2	Good	Good	No	In conflict with construction.	Remove tree
4A	988 Heywood Avenue	Ornamental beech	20	4	2	Good	Good	No	In conflict with construction.	Remove tree
5	986 Heywood Avenue	Cypress sp.	18	4	2	Good	Fair	No	In conflict with construction.	Remove tree
6	986 Heywood Avenue	Monkey Puzzle	74	9	5	Good	Good	No	Necron nest in the crown. In conflict with construction.	Remove tree
7	986 Heywood Avenue	Big-leaf Maple	28	5	3	Fair	No	No	In conflict with construction.	Remove tree
8	986 Heywood Avenue	Plum	32	6	3	Fair	Poor	No	In conflict with construction.	Remove tree
9	986 Heywood Avenue	Apple	29	5	2	Fair	Fair	No	In conflict with construction. Topped and repeatedly pruned.	Remove tree & replacement plant
10	Boulevard tree	Flowering Cherry	68	5	3	Fair	Fair	No	Recent plant	Remove tree & replacement plant
11	Boulevard tree	Flowering Cherry	8	2	1	Good	Good	No	Recent plant	Remove tree & replacement plant
12	Boulevard tree	Flowering Cherry	8	2	1	Good	Good	No	Recent plant	Remove tree & replacement plant
13	Boulevard tree	Flowering Cherry	10	2	1	Good	Good	No	Recent plant	Remove tree & replacement plant

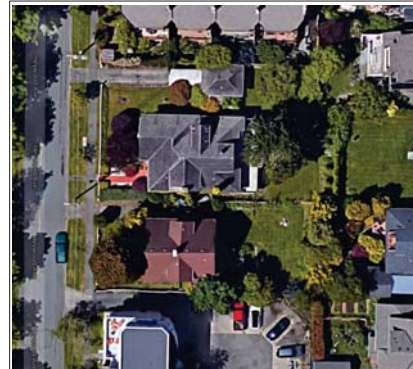


Fig. 1: Overview image of the existing houses



Fig. 3: East boundary, north end



Fig. 5: East boundary, south end



Fig. 7: North-east corner. Tree #3.



Fig. 2: Remove tree #6



Fig. 4: North boundary



Fig. 6: North-east corner. Tree #3C.

TREE PRESERVATION MEASURES

- Before site preparation begins, erect tree protect on fencing or construct hoarding fence as indicated. In sections adjacent to trees designated for removal, it is recommended that fencing be delayed until after tree removal is complete. Chip up tree branches and leave chip much on site for distribution within sensitive tree areas (see Note 5 below).
- The arborist will be present to oversee stump removal, excavation, service trenching, site grading or leveling that is within or adjacent to, the tree protection areas (TPAs).
- Procedure for blasting near tree root zones:
 - Blasting vibrations in the vicinity of the Tree Protection Areas are not to exceed a peak particle velocity of 25 mm/sec.
 - When blasting is required immediately adjacent to a Tree Protection Area, the blasting contractor will work with the arborist to develop a blasting plan that minimizes impacts to protected trees.
 - Use DYNAMITE as the explosive product. No fertilizer-based explosive is permitted, due to its toxicity to tree roots.
 - The contractor will prevent rock debris from the blast site from entering the TPA.
- Any tree roots damaged will be pruned back to undamaged tissue by the arborist.
- The vertical face of the excavation adjacent to the TPAs will be covered with geotextile placed to prevent soil desiccation and erosion.
- In areas where the root zone of the tree has been reduced by excavation, the remaining area will be top-dressed with 10cm of tree-chip mulch.
- Retained trees will be irrigated twice weekly during the dry summer period to a minimum effective depth of 30cm.
- Any access to TPAs must be approved and supervised by the project arborist.
- No equipment, materials or excavated soil will be placed or stored within the TPA. THIS PARTICULARLY INCLUDES HOARDING OF EXCAVATED SOILS NEEDED FOR BACKFILLING OF THE HOUSE FOUNDATION.
- One Replacement Tree will be planted as indicated in mitigation for the removal of Tree #6 (74cm d.b.h. Monkey Puzzle Tree).
- The location and specifications for the replacement tree on the subject property, will be determined at the landscaping phase and preapproved by City of Victoria representative. Please see the landscape plan for specific details of the replacement trees.
- City of Victoria will remove the existing four boulevard trees (#10, 11, 12 and 13) and will plant four replacement trees at the client expenses.
- All existing trees and hedges located outside property boundaries and in immediate vicinity of the excavation area will be retained and protected. The project arborist will ensure the tree protection measures will be applied and respected during the entire demolition and construction phases of this project.
- The majority of the trees and shrubs located outside property boundaries and in immediate vicinity of the excavation are composed of pioneer species or species resistant to root disturbance. If all the above tree preservation measures are applied and maintained during the construction phase we do not anticipate significant negative impact on the adjacent shrubs and trees.



PROJECT
986 + 988 Heywood Avenue,
Victoria, BC

SHEET TITLE Tree Management Plan

REV NO	DESCRIPTION	DATE
0	FOR REVIEW	YRMODA

PROJECT NO. 16-098

DATE February 3, 2017

SCALE 1:200

DRAWN BY LS

SHEET NO. T - 1