

Motels to Homes

The following list of motels have kitchenette services and for a major portion of the year are used for long stay purposes. The rental ranges from a low of \$650-\$900/month

Status quo is not an option

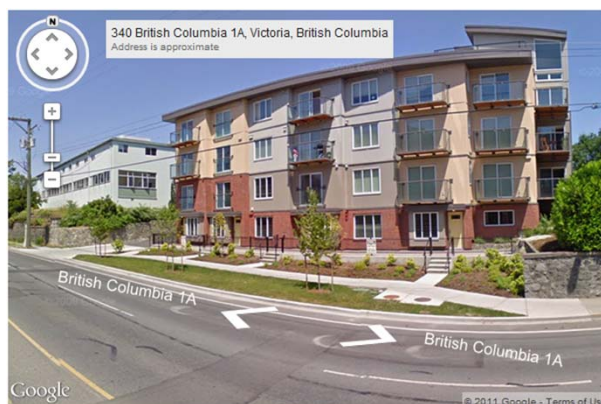
- Professional hospitality expert indicates core municipal area has an oversupply of motel units exceeding 700 units
- Approximately 1000 lower price motel units require substantial upgrade to remain in business
- Low occupancy rates(under 15%) and location prevent substantial capital improvements

Only option is.....

- Without variation all older motels rely on long-term stays for a majority of the year
- Long-term stays hasten the deterioration of the quality of the motel
- Eventually all acquire a “flophouse” label

Successful Motel Conversions to Date

340 Gorge Road =45 condo units



Midawin Apts-Pacifica Housing



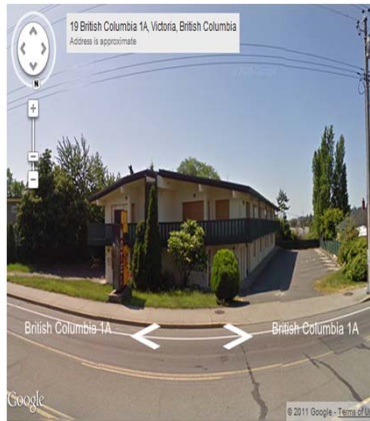
Waterway Apartments-Mike Kelly



Chestnut Apartments-Herman Rebneris, now Cool Aid Society



21 Gorge Road = 54 family units GVHS
Loreen Pl



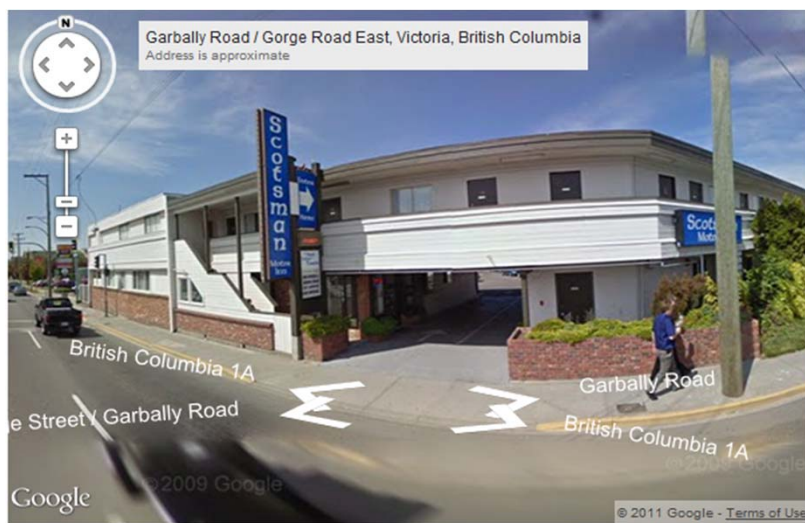
Dahli Place
35 Gorge Road
former Friendship Inn



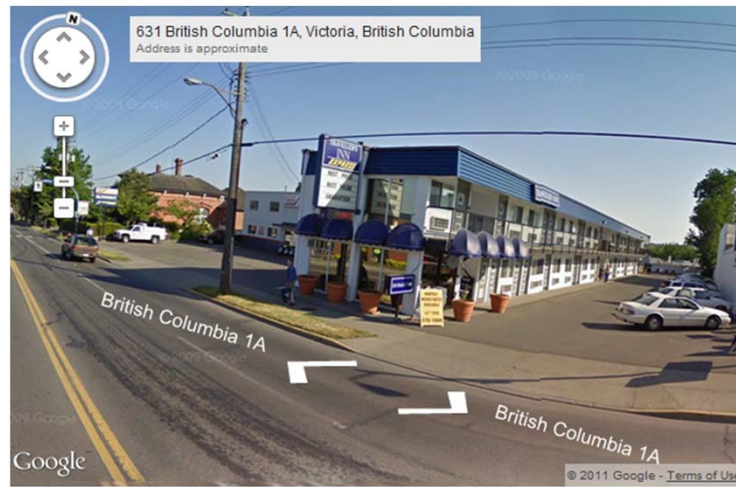
Let's do 500 more!

- Consider the following 15 hotel properties that could provide excellent workforce and quality affordable housing
- This would fill the gap between subsidized housing available at \$375/\$425 and market housing that starts at \$650
- This would help the thousands of individuals earning minimum service industry wages who can afford to pay \$500 or more.

474 Gorge Road East-Dutchman Inn 50 units



626 Gorge Road East-26 units



2828 Rock Bay Ave-55 units



136 Gorge Road East Robin Hood Motel-60-80 units



133 Gorge Road East-Castle Inn Motel 55 units



120 Gorge Road East-VNFC 39 units



Mayfair Inn-Speed Street 30 units



3025 Douglas Street-Mike Kelly 48 units



Affordable Housing - 3025 Douglas Street

759 Yates St.-Dalton Hotel 105 units



Plaza Hotel-GMC Properties 105 units/30 supportive units



Crystal Court Motel (vacant) 55 units



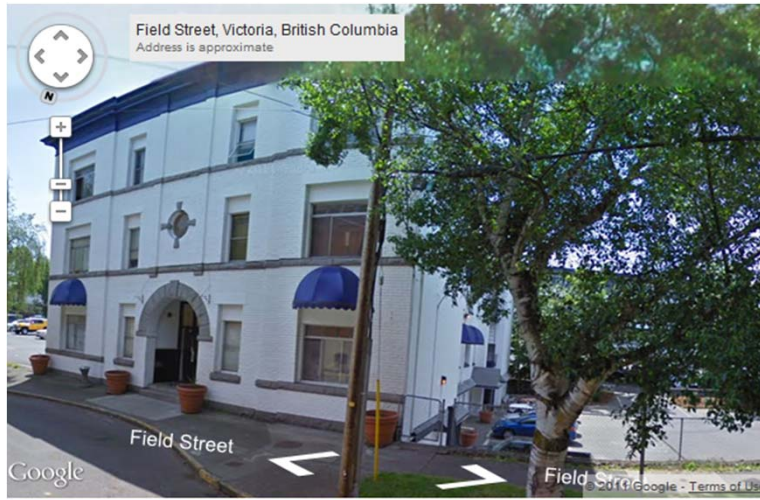
Strathcona Hotel 70 units



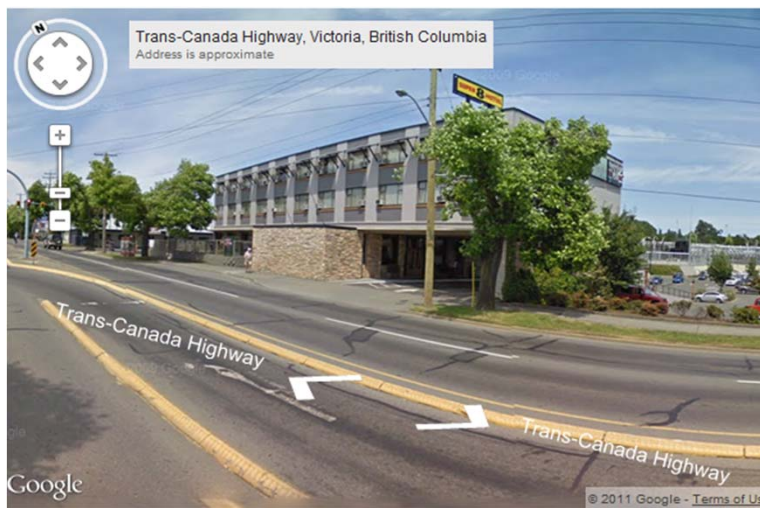
Hotel 760-760 Queens 42-70 units



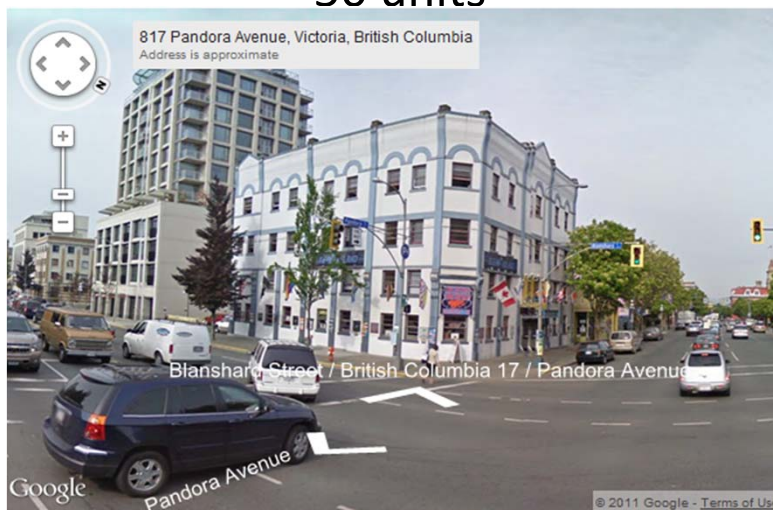
723 Field St 24 units



Super 8 Motel-2915 Douglas St 60 units



791 Pandora-Backpackers Inn 50 units



Tally-Ho Motel 3020 Douglas Street



City Centre-1961 Douglas Street

