



Outline of Presentation

- Progress on the rings and lower counterweight (LCW)
- Progress on the bascule leaf
- Assembly of the completed steelwork
- Other site work
- Fendering
- Financial Update
- Other issues such as public realm, communications, etc.

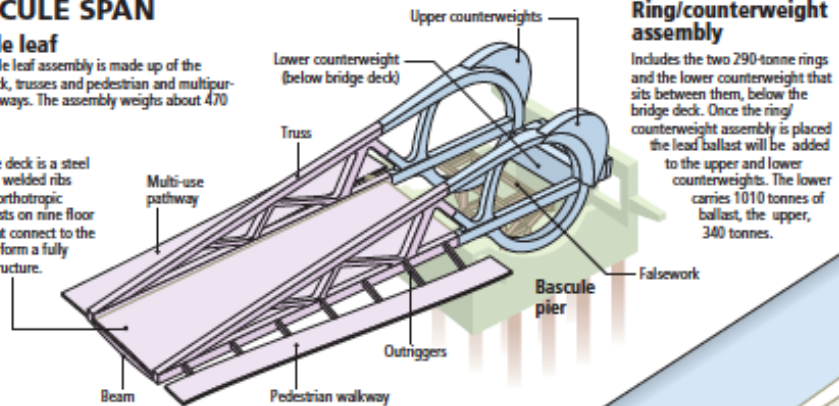
Steel Fabrication

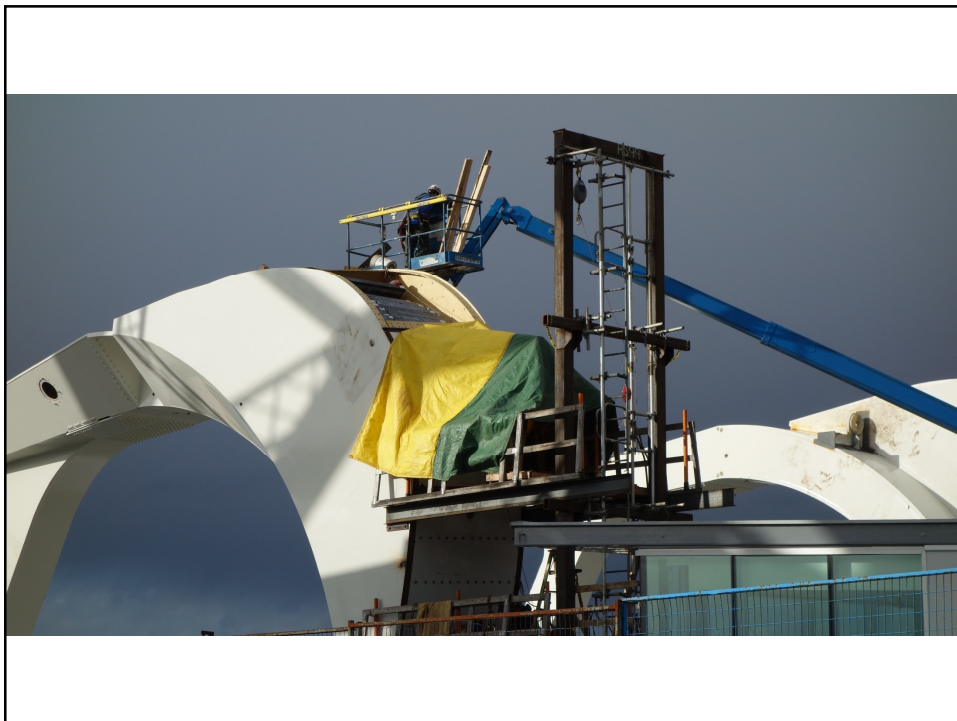
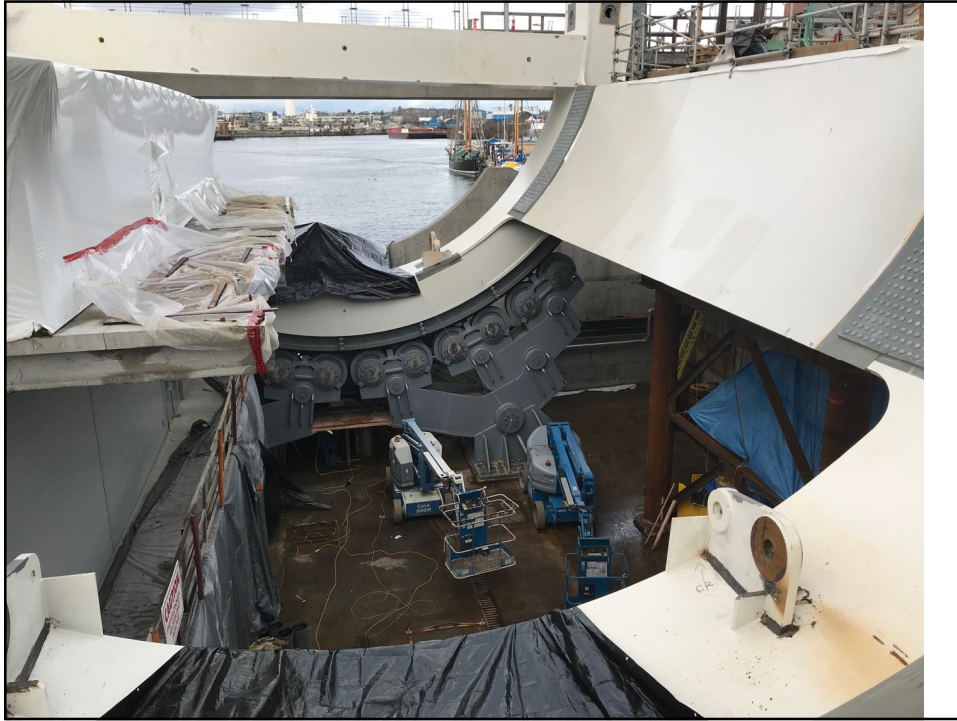
BASCULE SPAN

Basculer leaf

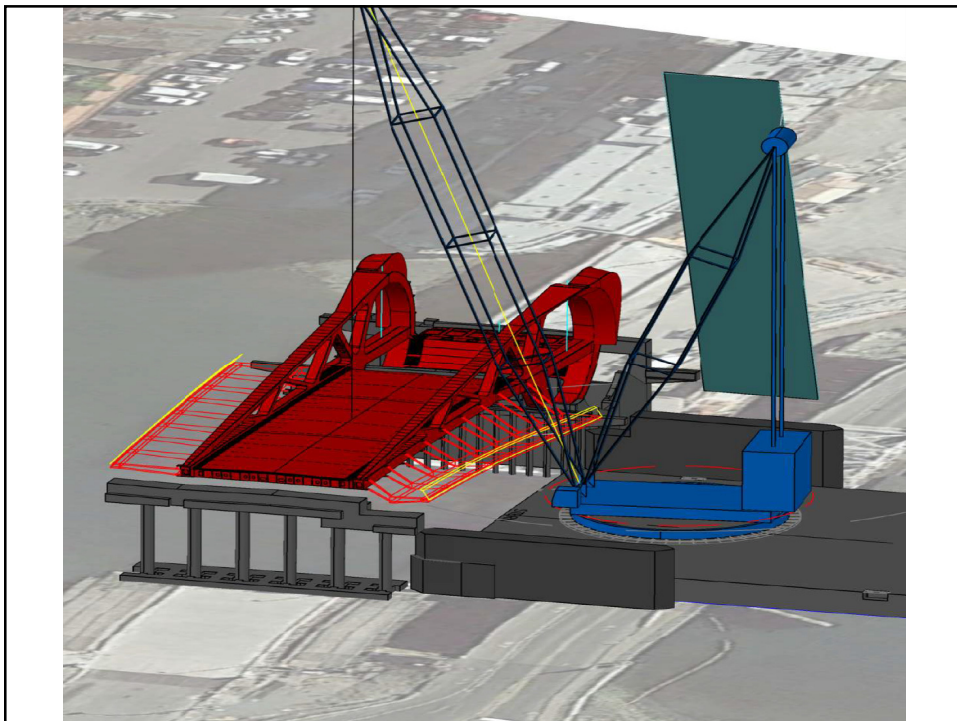
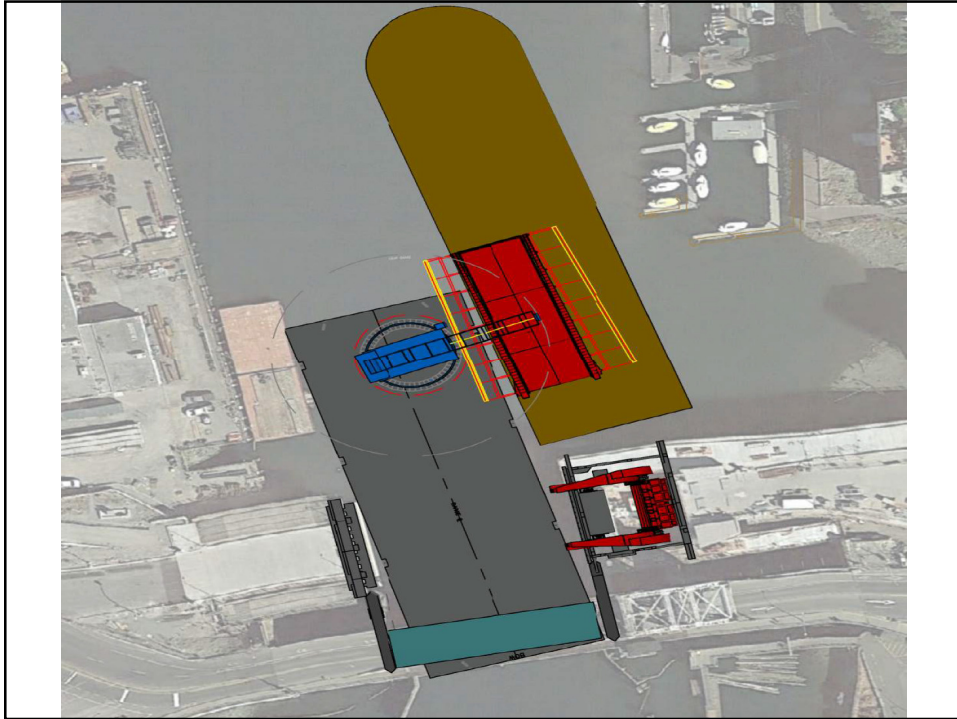
The bascule leaf assembly is made up of the bridge deck, trusses and pedestrian and multipurpose walkways. The assembly weighs about 470 tonnes.

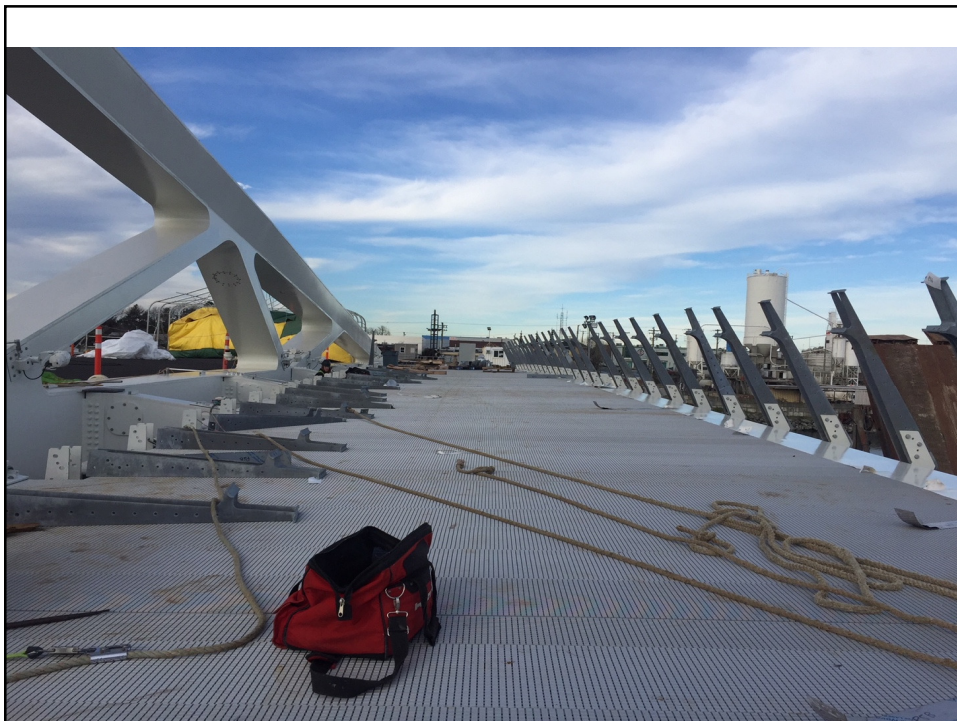
The bridge deck is a steel plate with welded ribs called an orthotropic deck. It rests on nine floor beams that connect to the trusses to form a fully welded structure.













Schedule Update

- Bascule will be lifted into place on January 27, exact time dependent on weather
- During February and March extensive testing of the bridge will be undertaken
- Bridge still scheduled to open to traffic by end of March 2018

Citizen Engagement Update

- Lifting and assembly of the various steel parts has been well documented
- Keen media interest including a TC weekend islander section
- Working with neighbours on noise and light issues
- Next major event is the lift of the bascule span
- Work on opening ceremony in progress.

Bridge Management

- Asset description;
- Bridge administration;
- Operational programs and procedures;
- Maintenance programs and procedures;
- Security and safety;
- Upgrade, reconfiguration/modification;
- Replacement and disposal plans.

Public Realm Update

- Council approved updated conceptual designs on December 14, 2017
- Includes a future waterfront park in Victoria West, a revised design for the Northern Junk plaza, and a revised landscape design for the triangle island to accommodate a public art installation
- Council approved a budget of \$650,000 for completion of the triangle island, as well as completion of landscaping at the Janion plaza, Johnson Street traffic median, and the Esquimalt and Harbour Road intersection
- Staff are working on final design for construction
- Interim connections will be established with PCL

Fendering

- South side and in-channel fendering complete
- Continuing to work on options for north side fendering
- Construction work unlikely to commence before March 2018 because of steel assembly work in the area
- Options and implications need to be finalized before details are made public

Financial Implications

- Approved budget \$105.06 million
- Total spent to December 31, 2017 is \$96.08 million
- Remaining unallocated contingency at December 31, 2017 is \$515,241



Next Steps

- Continue to monitor steel work assembly and painting;
- Monitor the proposed testing and commissioning procedures for the bridge to assure satisfactory operation;
- Develop options for the north side fendering design and bring a report to Council regarding next steps;
- Work with PCL to amend their demolition work related to the old bridge so that the removal of the abutments is consistent with the final plans for the public realm.

Recommendation

That City Council receive this report for information