

# BCLC REQUEST FOR EXPRESSIONS OF INTEREST FOR SITING OF NEW CASINO FACILITY – PHASE TWO



## Background

On October 29, 2015, Council passed the following motion:

1. *Direct staff to engage with BCLC to gather further information.*
2. *Direct staff to review current policy, identify and assess any key issues, and provide a draft response to BCLC's Request for Expression of Interest for Council consideration at the November 26, 2015, Planning and Land Use Committee meeting.*

On April 14, 2016 BCLC invited the City of Victoria to participate in Phase Two of the EOI process.

BCLC considering City of Victoria or District of Saanich



Title of powerpoint presentation – access on master slide

## Issues & Analysis

### Phase Two EOI Process

- Responses received and assessed by BCLC
- BCLC will make final decision

### Information about the proposed Gaming Facility

- Option A - Community Gaming Centre
- Option B - Casino

### Gaming Facility Size and Scope

- 15,000 to 30,000sq ft gaming floor
- 400 parking stalls

### Casino Rezoning Policy

- Adopted in 2003
- Provides guidelines and criteria for a new casino
- Single facility and must form part of a mixed use facility
- Focuses on Downtown and Douglas-Blanshard Corridor

### Revenue and Cost Impacts

- Host local government payment \$1.8 to \$2.5 million



Title of powerpoint presentation – access on master slide

## Issues & Analysis

### Opportunities for City-owned sites

- Crystal Gardens and adjacent Apex site has been identified as a potential site
- Crystal Gardens site is identified in the Casino Rezoning Policy
- Other financial benefits identified with Crystal Gardens

Identification of these City-owned sites does not limit siting options.

Other privately owned could also be considered by BCLC subject to a rezoning process



Title of powerpoint presentation – access on master slide

## Next Steps

- Final response sent to BCLC
- Responses received in Phase Two will be reviewed and assessed as part of a process overseen by an independent third party
- BCLC will make a final decision to select its preferred host Municipality for a gaming facility
- A service provider to operate the gaming facility would then be selected by BCLC and begin the public consultation process as per the Gaming Control Act
- The service provider would identify a site and begin the rezoning process
- Council is not obligated to support a rezoning application
- Council can withdraw its interest at any time from the process



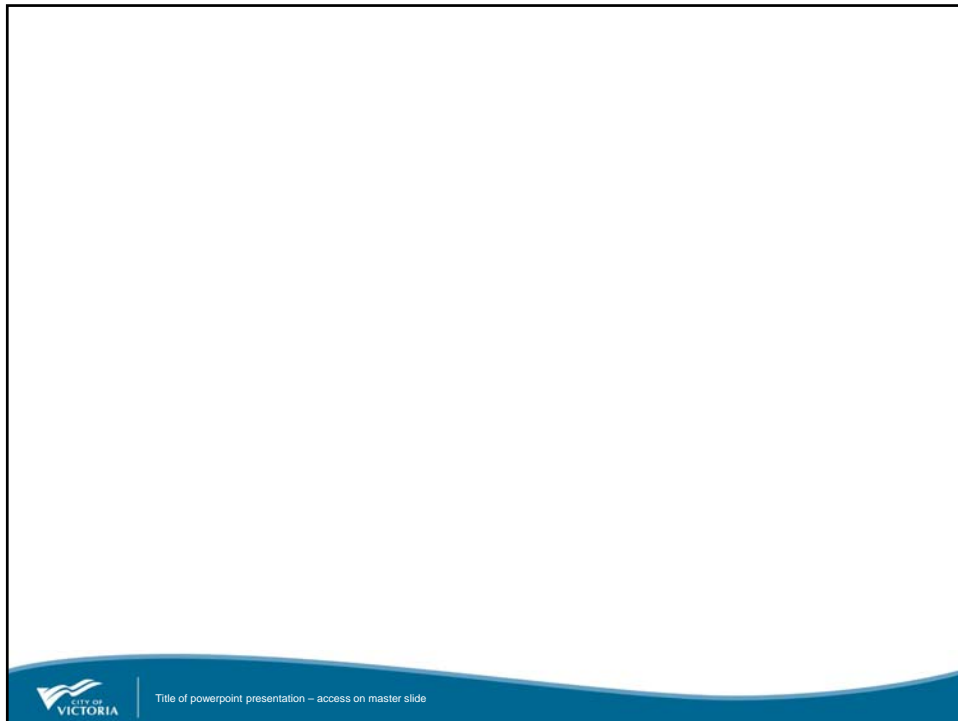
Title of powerpoint presentation – access on master slide

## Recommendation

That Council direct staff to submit the attached response to the British Columbia Lottery Corporation's Request for Expressions of Interest (EOI) - Phase Two.



Title of powerpoint presentation – access on master slide



## Options & Impacts

### Option 1

That Council direct staff to submit a response to BCLC in accordance with Attachment 2 to the Request for Expression of Interest - Phase Two for their consideration and which includes the site identification and promotion of the City-owned Crystal Gardens and Apex site as a potential site for consideration by BCLC. (See Attachment 4).

### Option 2

That Council direct staff to prepare a formal response in accordance with Attachment 2 to the Request for Expression of Interest - Phase Two, but which excludes the identification and site promotion of the Crystal Gardens and Apex site as a potential site for consideration by BCLC.

