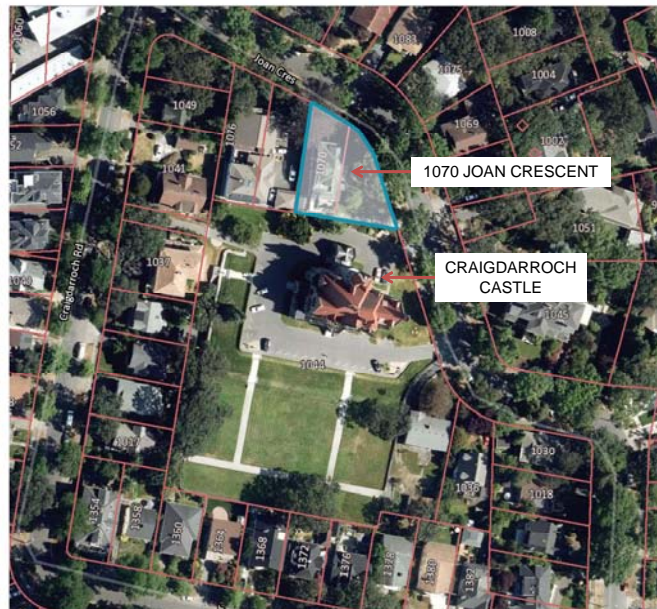




CRAIGDARROCH CASTLE VISITOR CENTRE AT 1070 JOAN CRESCENT  
PROPOSED HERITAGE ALTERATION & ADDITION



CONTEXT PLAN – AERIAL VIEW



### PROJECT BACKGROUND – WHY A VISITOR CENTRE?

- In December 2012, Directors and Staff undertook a review of the Craigdarroch Castle Historical Museum Society's presentation plan that was originally developed in 2003.
  - A room-by-room examination of the interpretive space inside Craigdarroch Castle was conducted in order to better understand its current use and how the remaining spaces should be incorporated into the visitor experience.
  - In January 2013, with this in mind, the Board of Directors came to the conclusion that the best place for our stories to reside is inside the Castle and approved an updated presentation plan recommending removal of operational activities from the Castle.
  - For instance, at this time the gift shop inhabits the rooms that were the kitchen and scullery and our lunchroom is in what was the Dunsmuir's pantry. These are important rooms that visitors have told us would add value to their experience and the Society plans to focus restoration and interpretation efforts on these as soon as we've relocated our operational activities.
  - There are also new galleries to be developed in the rooms occupied by our Registrar, Curator and Visitor Service personnel.
- Courtesy of John Hughes, Executive Director Craigdarroch Castle Historical Museum Society*
- 1070 Joan Crescent is owned by the Society and represents a unique opportunity for conversion as a Visitor Centre and house important Society operations, freeing up key interpretive spaces in the Castle.



CHARACTER PHOTO – VIEW LOOKING SOUTH EAST





#### CHARACTER DEFINING ELEMENTS

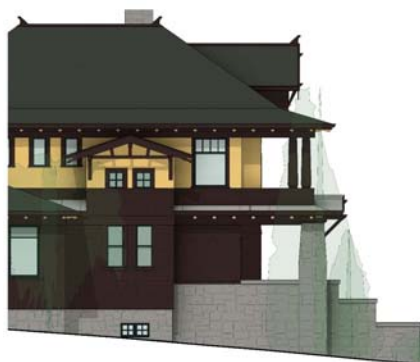
The prominent location of the house at the entrance to the Craigdarroch subdivision, and the visibility of two sides of the house and mature garden from the curved street; and the rear of the house from the publicly accessible grounds of Craigdarroch Castle.

The original front retaining stone wall at the sidewalk, and the garden stairs.

*Stuart Stark*



CRAIGDARROCH CASTLE



#### CHARACTER DEFINING ELEMENTS

The original detailed massing of all building facades dating to the time of construction, including porches, exterior staircase, gables; windows, and roof planes.

All the historic exterior building materials dating to the time of construction, including the granite foundations, front stairway; porch pillars and chimney, extensive wood detailing, and wood and rough-cast stucco wall coverings.

Recognize the original design intent of the building and reopen the front porch and restore the original colour scheme.

*Stuart Stark*



CRAIGDARROCH CASTLE



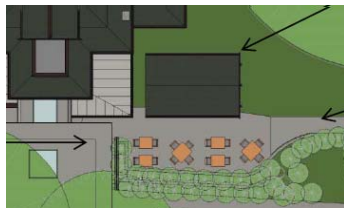


### CHARACTER DEFINING ELEMENTS

The main floor rooms of the house – hall, drawing room, dining room and den – contain original architectural features, including two original fireplaces with original tiles; beamed ceilings; original paneling; wainscoting; trim; doors; and wood flooring.

Clear leaded glass windows are in both the main and upper floor rooms – some with later red colouring.

*Stuart Stark*

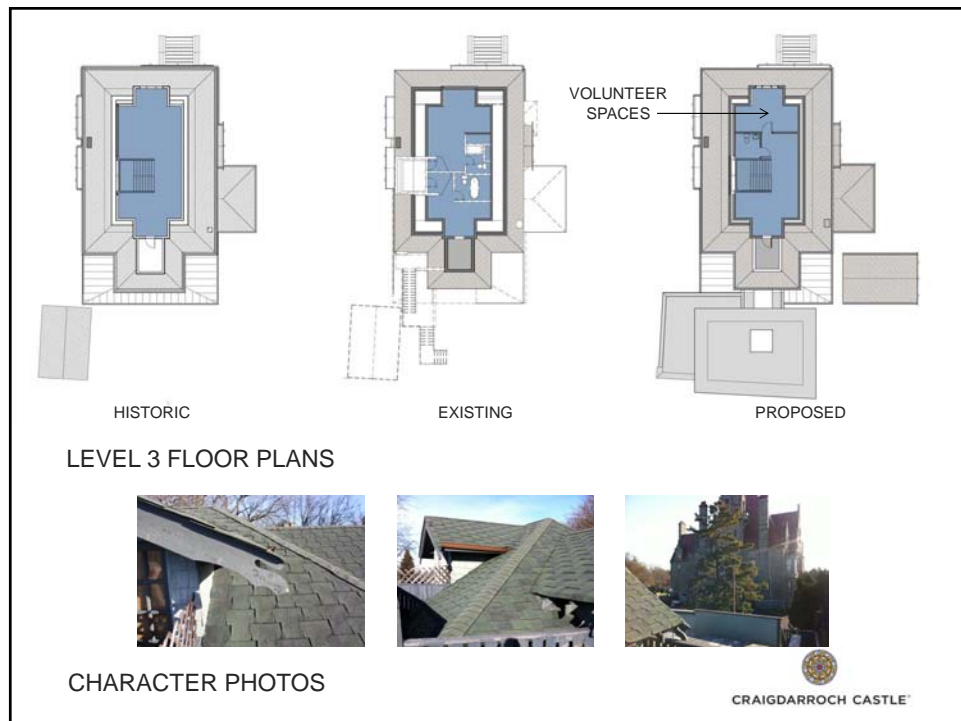
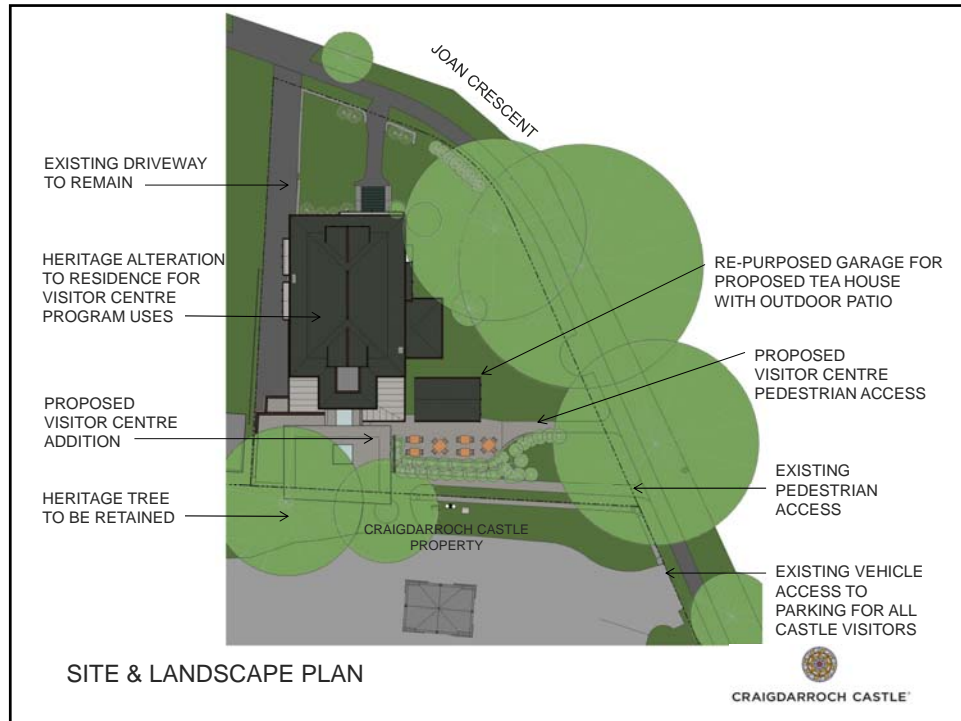


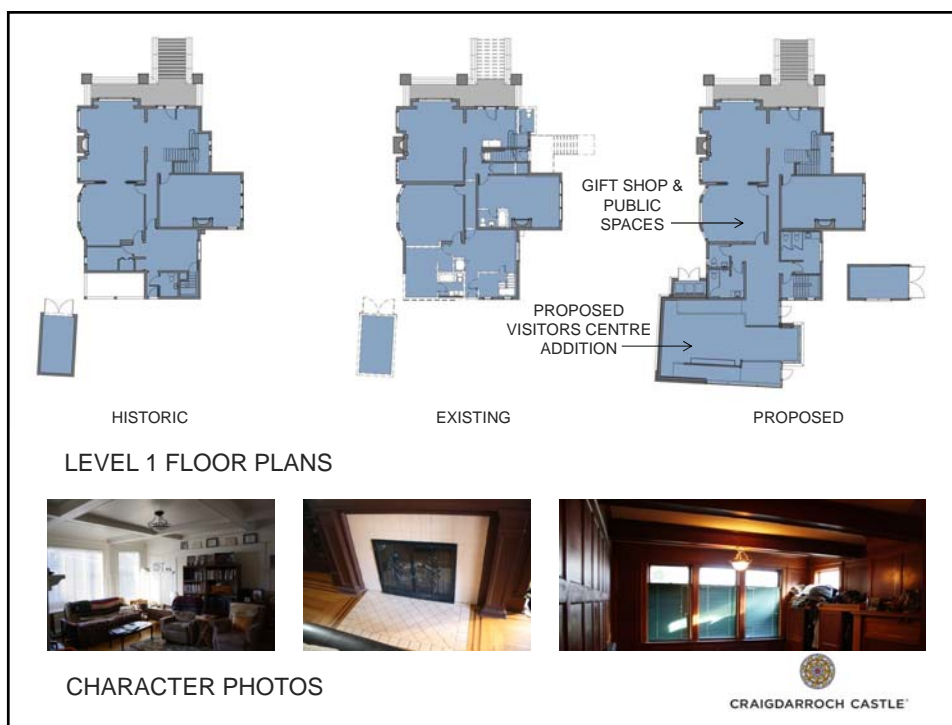
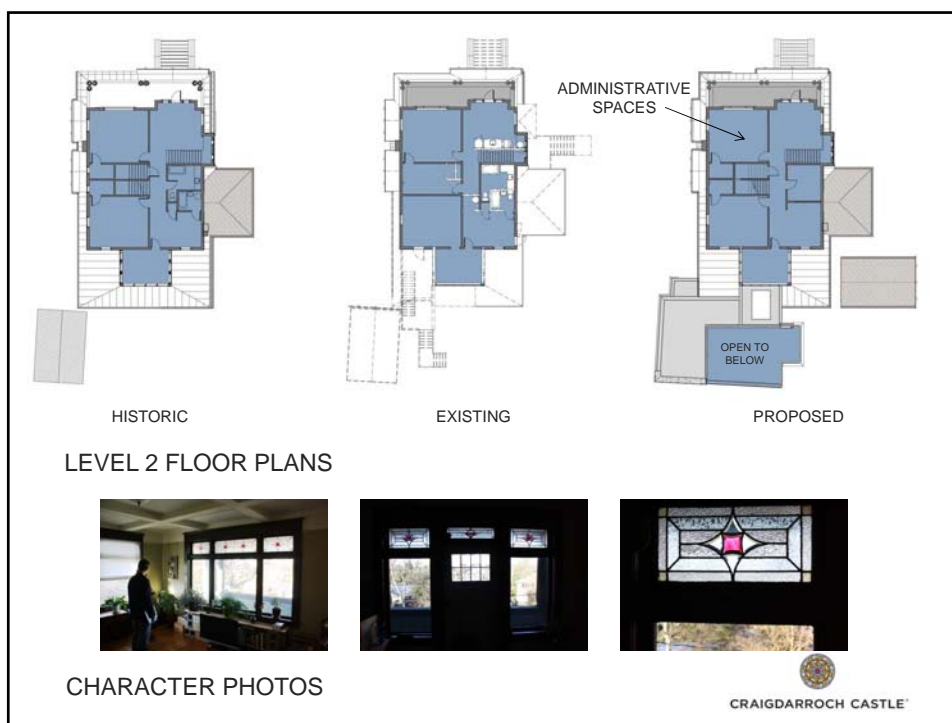
### CHARACTER DEFINING ELEMENTS

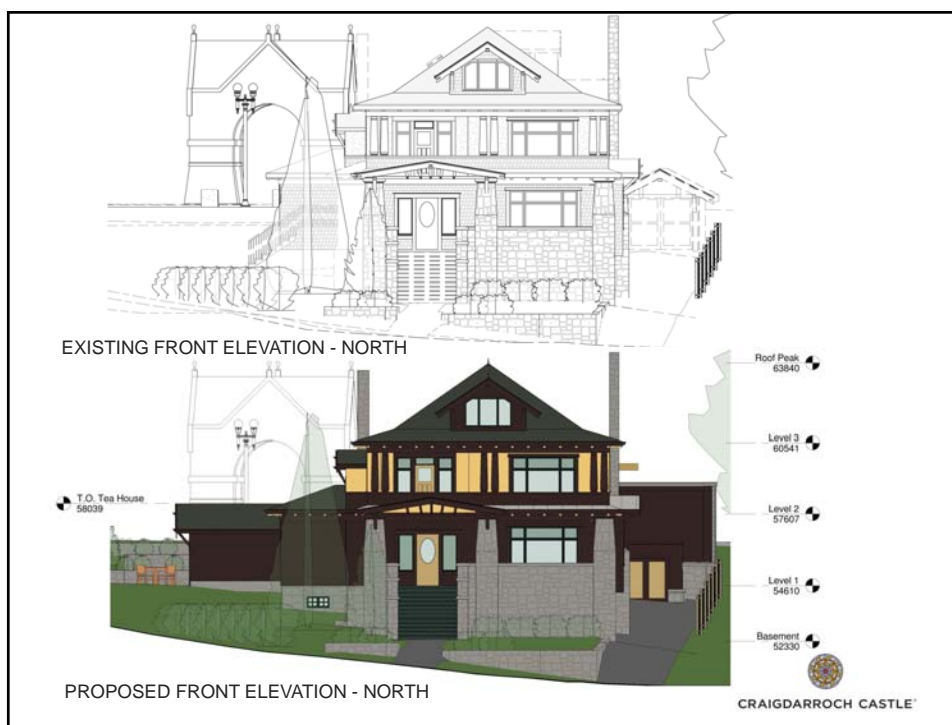
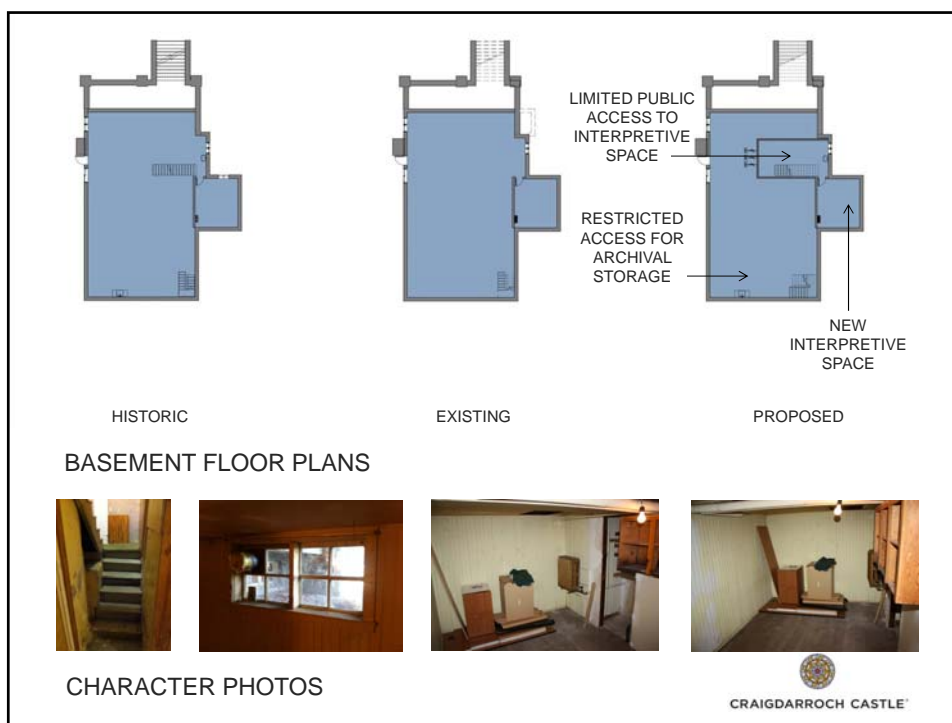
Recognize the rarity of the original and rare detached garage with Arts & Crafts gable and shingle exterior, and ensure its preservation.

*Stuart Stark*



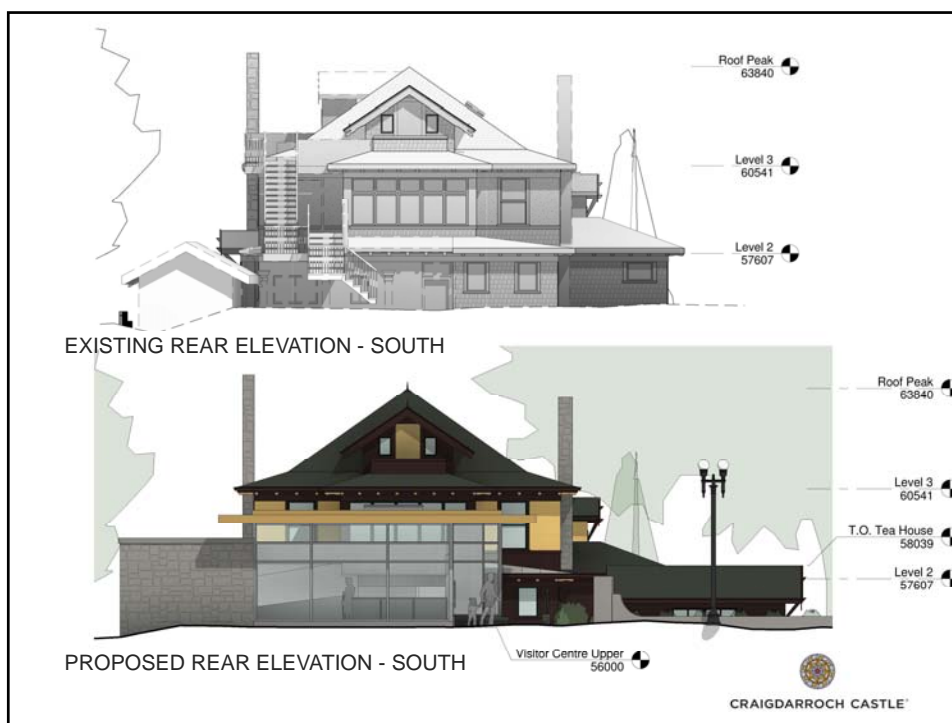














EXISTING STREET ELEVATION LOOKING SOUTH EAST



RESTORED ORIGINAL COLOUR SCHEME SHOWN  
PROPOSED STREET ELEVATION

