

PRIMA STRADA

1990 Fort Street, Victoria BC



SCULPIN FISH DESIGN

Hillel Architecture Inc.

NEIGHBOURHOOD CONTEXT



- 1990 Fort Street, located on the boundary of the Jubilee Neighbourhood (North and South) and the municipality of Oak Bay
- the area serves as a commercial hub for local residents and businesses and includes neighbourhood shopping destinations, national banks, restaurants, multi-family residential developments and professional/medical/dental offices
- commercial development occupies all four corners of the intersection and includes the Fort and Foul Bay Shopping Centre anchored by Save-on-Foods
- the site is also in close proximity to the Royal Jubilee Hospital, Oak Bay Recreation Centre and Oak Bay High School, all within a short walk



FORT STREET FRONTAGE LOOKING EAST



FORT STREET FRONTAGE LOOKING WEST



FORT STREET FRONTAGE LOOKING OUT TO STREET

CONTEXT PHOTOS

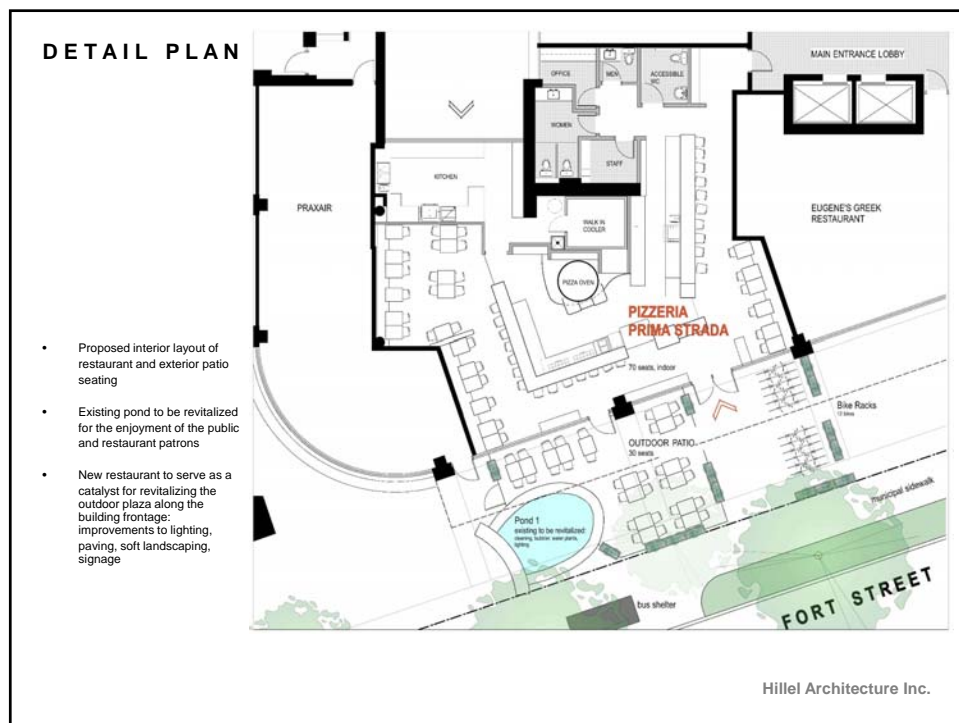
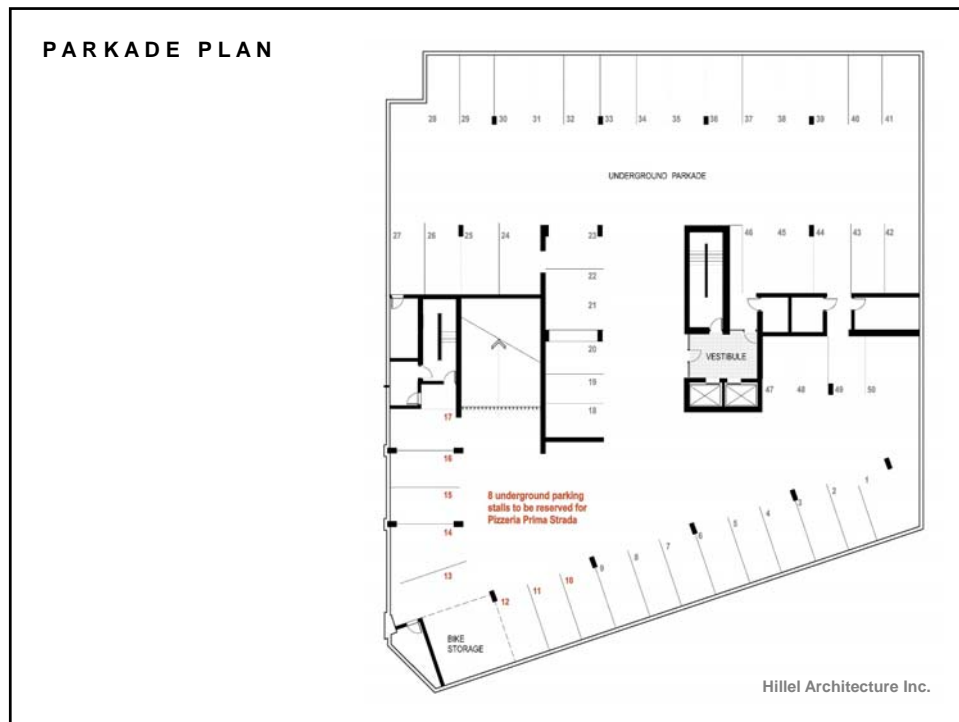
- ground floor of a 4 storey mixed use building with ample street frontage
- new restaurant will serve as a catalyst for revitalizing the outdoor plaza along the building frontage including improvements to the pond, lighting, paving, soft landscaping and signage
- active commercial use at street level will contribute to the growing vitality of the area and will create a more inviting, pedestrian-friendly environment in the process
- area where people live, work, learn and play, importance of community-fit for a business proudly known for being a neighbourhood pizzeria

Hillel Architecture Inc.

SITE PLAN



Note:
base plan information provided
by d'Amico architecture + urbanism
Hillel Architecture Inc.



CONCEPTUAL RENDERINGS






SCULPIN FISH DESIGN

Thank You.